

Product datasheet for **RG238332**

ENT2 (SLC29A2) (NM_001300868) Human Tagged ORF Clone

Product data:

Product Type:	Expression Plasmids
Product Name:	ENT2 (SLC29A2) (NM_001300868) Human Tagged ORF Clone
Tag:	TurboGFP
Symbol:	ENT2
Synonyms:	DER12; ENT2; HNP36
Mammalian Cell Selection:	Neomycin
Vector:	pCMV6-AC-GFP (PS100010)
E. coli Selection:	Ampicillin (100 ug/mL)
ORF Nucleotide Sequence:	>RG238332 representing NM_001300868. Blue=ORF Red=Cloning site Green=Tag(s)

```
GCTCGTTTGTGAACCGTCAGAATTTGTAAACGACTCACTATAGGGCGCCGGGAATTCGTCGACTG
GATCCGGTACCGAGGAGATCTGCCGCCGCGATCGCC
ATGGCGGAGGAGACGCCCGGGGACAGCTACCACCTGGTGGGATCAGCTTCTTCATCCTGGGGCTG
GGCACCCTCCTTCCCTGGAATCTTTCATCACCGCCATCCCGTACTTCCAGGCGCGACTGGCCGGGGCC
GGCAACAGCACAGCCAGGATCCTGAGCACCAACCACACGGGTCCCGAGGATGCCTTCAACTTCAACAAT
TGGGTGACGCTGCTGCCAGTGCCCTGCTGCTTTCACCCTCCTCAACTCCTTCTGTACCAGTGC
GTCCCGGAGACGGTGCATTCTGGGCAGCCTGCTGGCCATACTGCTGCTTTTGCCTGACAGCAGCG
CTGGTCAAGGTGGACATGAGCCCGGACCCTTCTTCCATCACCATGGCCTCCGTCTGCTTTCATCAAC
TCCTTCAGTGCAGTCTACAGGGCAGCCTTTCGGGCAGCTGGGCACCATGCCCTCCACCTACAGCACC
CTTCTCCTCAGCGGCCAGGGCCTGGCTGGGATCTTTGCTGCCCTTGCATGCTCCTGTCCATGGCCAGT
GGCGTGGACGCCGAGACCTCTGCCCTGGGGTACTTTATCACGCCCTGTGTGGGCATCCTCATGTCCATC
GTGTGTTACCTGAGCCTGCCTCACCTGAAGTTTGGCCGCTACTACCTGGCCAATAAATCATCCCAGGCC
CAAGCTCAGGAGCTGGAGACAAAGCTGAGCTCCTCCAGTCTGATGAGAACGGGATCCCAGTAGTCCC
CAGAAAGTAGCTCTGACCCTGGATCTTGACCTGGAGAAGGAGCCGGAATCAGAGCCAGATGAGCCCCAG
AAGCCAGGAAAACCTTCAGTCTTCACTGTCTTCCAGAAGATCTGGCTGACAGCGCTGTGCCTTGTGTTG
AAGTGGAGTCAGTTCTTCAACCCATCTGCTGCTTCTCCTCTTCAACATCATGGACTGGCTGGGACGG
AGCCTGACCTCTTACTTCTGTGGCCAGACGAGGACAGCCGGCTGCTGCCCTGTGGTCTGCCTGCGG
TTCTGTTCGTGCCCTTTCATGCTGTGCCACGTGCCCCAGAGGTCCCGGCTGCCATCCTTCCCA
CAGGATGCCTACTTTCATCACCTTCATGCTGCTTTCGCCGTTTCTAATGGCTACCTGGTGTCCCTCACC
ATGTGCCCTGGCGCCAGGAGGTGCTGCCACACGAGAGGGAGGTGGCCGGCGCCCTCATGACCTTCTTC
CTGGCCCTGGGACTTTCCTGTGGAGCCTCCCTCTCCTTCTTCAAGGCGCTGCT
ACGCGTACGCGGCCGCTCGAG - GFP Tag - GTTTAAAC
```



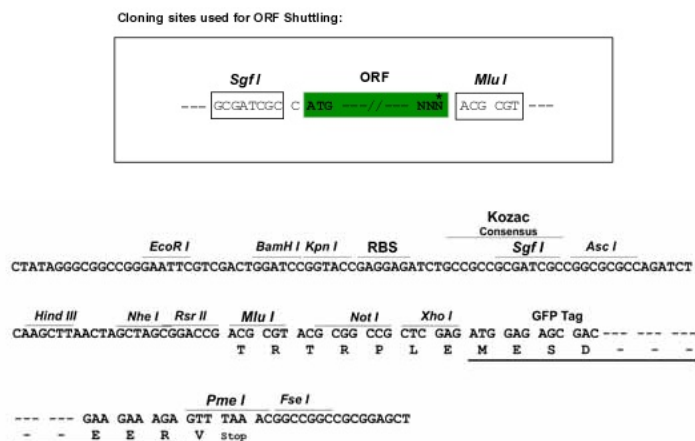
[View online »](#)

Protein Sequence: >Peptide sequence encoded by RG238332
 Blue=ORF Red=Cloning site Green=Tag(s)

MARGDAPRDSYHLVGISFFILGLTLLPWNFFITAIPYFQARLAGAGNSTARILSTNHTGPEDAFNFNN
 WVTLLSQLPLLLFTLLNSFLYQCPETVRILGSLLAIIILLLFALTAALVKVDMSPGPFSSITMASVCFIN
 SFSAVLQGSFLGQLGTMPTYSTLFLSGQLAGIFAALAMLLSMASGVDAETSALGYFITPCVGILMSI
 VCYLSLPHLKFARYYLANKSSQAQAQAELETKAELLQSDENGIPSSPQKVALTLDLLEKEPESEPDQP
 KPGKPSVFTVFQKIWLTAALCLVLFVTVLSVFPALTAMVTSSTSPGKWSQFFNPICCFLLFNIMDWLGR
 SLTSYFLWPDEDSRLLPLLVLCLRFLFVPLFMLCHVPQRSRLPILFPQDAYFITFMLLFAVSNGYLVS
 LTMCLAPRQVLPHEREVAGALMTFFLALGLSCGASLSFLFKALL
TRTRPLEMESDESGLPAMEIECRITGTLNGVEFELVGGGEGTPEQGRMTNKMSTKGALTFSPYLLSHV
 MGYGFYHFGTYPSGYENPFLHAINNGGYNTRIEKYEDGGVLHVSFSYRYEAGRVIGDFKVMGTGFPED
 SVIFTDKIIRSNATVEHLHPMGDNDLDGSFTRTFSLRDGGYSSVVDSHMHFKSAIHPSILQNGGPMFA
 FRRVEEDHSNTELGIVEYQHAFKTPDADAGEERV

Restriction Sites: SgfI-MluI

Cloning Scheme:



ACCN: NM_001300868

ORF Size: 1368 bp

OTI Disclaimer: The molecular sequence of this clone aligns with the gene accession number as a point of reference only. However, individual transcript sequences of the same gene can differ through naturally occurring variations (e.g. polymorphisms), each with its own valid existence. This clone is substantially in agreement with the reference, but a complete review of all prevailing variants is recommended prior to use. [More info](#)

OTI Annotation: This clone was engineered to express the complete ORF with an expression tag. Expression varies depending on the nature of the gene.

Components: The ORF clone is ion-exchange column purified and shipped in a 2D barcoded Matrix tube containing 10ug of transfection-ready, dried plasmid DNA (reconstitute with 100 ul of water).

RefSeq: [NM_001300868.1](#), [NP_001287797.1](#)

RefSeq Size: 2730 bp

RefSeq ORF: 1371 bp

Locus ID: 3177

UniProt ID: [Q14542](#)

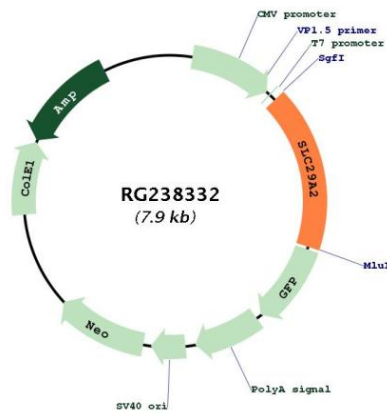
Cytogenetics: 11q13.2

Protein Families: Transmembrane

MW: 50.1 kDa

Gene Summary: The uptake of nucleosides by transporters, such as SLC29A2, is essential for nucleotide synthesis by salvage pathways in cells that lack de novo biosynthetic pathways. Nucleoside transport also plays a key role in the regulation of many physiologic processes through its effect on adenosine concentration at the cell surface (Griffiths et al., 1997 [PubMed 9396714]). [supplied by OMIM, Nov 2008]

Product images:



Circular map for RG238332