

Product datasheet for **RG238323**

Epoxide hydrolase (EPHX1) (NM_001291163) Human Tagged ORF Clone

Product data:

Product Type:	Expression Plasmids
Product Name:	Epoxide hydrolase (EPHX1) (NM_001291163) Human Tagged ORF Clone
Tag:	TurboGFP
Symbol:	EPHX1
Synonyms:	EPHX; EPOX; HYL1; MEH
Mammalian Cell Selection:	Neomycin
Vector:	pCMV6-AC-GFP (PS100010)
E. coli Selection:	Ampicillin (100 ug/mL)
ORF Nucleotide Sequence:	>RG238323 representing NM_001291163. Blue=ORF Red=Cloning site Green=Tag(s)

```
GCTCGTTTGTAGTGAACCGTCAGAATTTGTAAACGACTCACTATAGGGCGCCGGGAATTCGTCGACTG
GATCCGGTACCGAGGAGATCTGCCGCCGCGATCGCC
ATGTGGCTAGAAATCCTCCTCACTTCAGTGTGGGCTTTGCCATCTACTGGTTCATCTCCCGGGACAAA
GAGGAACTTTGCCACTTGAAGATGGGTGGTGGGGCCAGGCACGAGGTCCGAGCCAGGGAGGACGAC
AGCATCCGCCCTTCAAGGTGGAACCGTCAGATGAGGAGATCCACGACTTACACCAGAGGATCGATAAG
TTCCGTTTCACCCACCTTTGGAGGACAGCTGCTTCCACTATGGCTTCACTCCAACCTACCTGAAGAAA
GTCATCTCCTACTGGCGAATGAATTTGACTGGAAGAAGCAGGTGGAGATTCTCAACAGATACCCTCAC
TTCAAGACTAAGATTGAAGGGCTGGACATCCACTTCATCCACGTGAAGCCCCCAGCTGCCCGCAGGC
CATACCCCGAAGCCCTTGTGATGGTGCACGGCTGGCCCGGCTCTTTCTACGAGTTTATAAGATCATC
CCACTCCTGACTGACCCAAGAACCATGGCCTGAGCGATGAGCACGTTTTTGAAGTCATCTGCCCTTCC
ATCCCTGGCTATGGCTTCTCAGAGGCATCCTCCAAGAAGGGTTCAACTCGGTGGCCACCGCCAGGATC
TTTTACAAGCTGATGCTGCGGCTGGGCTTCCAGGAATTCTACATTCAGGAGGGGACTGGGGTCCCTG
ATCTGCACTAATATGGCCAGCTGGTGGCCAGCCACGTGAAAGGCCTGCCTTGAACATGGCTTTGGTT
TTAAGCACTTCTACCTGACCCTCCTCCTGGGACAGCGTTTCGGGAGGTTTCTTGGCCTCACTGAG
AGGGATGTGGAGCTGCTGATCCCGTCAAGGAGAAGGTATTCTACAGCCTGATGAGGAGAGCGGCTAC
ATGCACATCCAGTGCACCAAGCCTGACACCGTAGGCTCTGCTGTAATGACTCTCCTGTGGTCTGGCT
GCCTATATTCTAGAGAAGTTTTCCACCTGGACCAATACGGAATTCGATACCTGGAGGATGGAGGCCTG
GAAAGGAAGTTTCCCTGGACGACCTGCTGACCAACGTCATGCTCTACTGGACAACAGGCACCATCATC
TCCTCCCAGCGCTTCTACAAGGAGAACCCTGGGACAGGGCTGGATGACCCAGAAGCATGAGCGGATGAAG
GTCTATGTGCCACTGGCTTCTCTGCCCTTCCCTTTTGGAGCTATTGCACACGCTGAAAAGTGGGTGAGG
TTCAAGTACCCAAAGCTCATCTCTATTCTACATGGTTCGTGGGGCCACTTTGCCGCCTTTGAGGAG
CCGGAGCTGCTCGCCAGGACATCCGCAAGTTCCTGTCGGTGTGGAGCGGCAA
ACGCGTACGCGGCCGCTCGAG - GFP Tag - GTTTAAAC
```



[View online >](#)

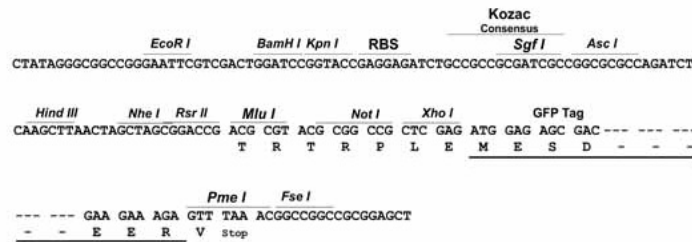
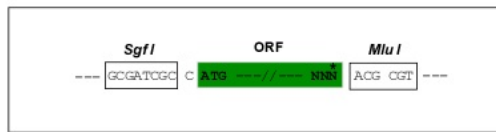
Protein Sequence: >Peptide sequence encoded by RG238323
 Blue=ORF Red=Cloning site Green=Tag(s)

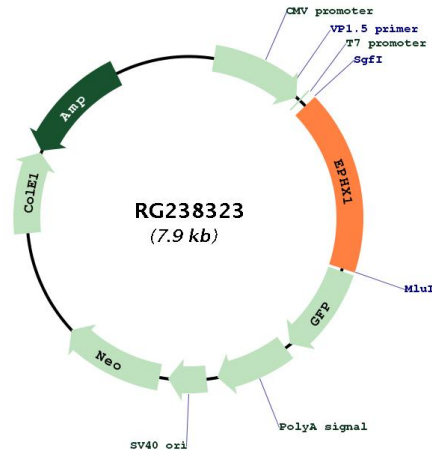
MWLEILLTSVLGFAYWFISRDKEETLPLEDGWWGPGTRSAAREDDSIKPFKVFETSDEEIHDLHQRIDK
 FRFTPLEDSCFHYGFNSNYLKKVISYWRNEFDWKKQVEILNRYPHFKTKIEGLDIHFIVKPPQLPAG
 HTPKPLLMVHWPGSFYEFYKIIPLLTDPKNHGLSDEHVFEVICPSIPGYGFSEASSKGFNSVATARI
 FYKLMRLRGFQEFYIQGGDWGSLICTNMAQLVPSHVKGLHLNMLVLSNFSTLTLLLGQRFGRFLGLTE
 RDVELLYPVKEKVFYSLMRESGYMHIQCTKPDTVGSALNDSPVGLAAYILEKFFSTWTNTEFRYLEDGGL
 ERKFSLDLLTNVMLYWTGTIISQRFYKENLQGWMTQKHERMKVYVPTGFSAFPPELLHTPEKWVR
 FKYPKLISYSYMRGGHFAAFEEPELLAQDIRKFLSVLERQ
 TRTRPLEMESDESGLPAMEIECRITGTLNGVEFELVGGGEGTPEQGRMTNKMSTKGALTFSPYLLSHV
 MGYGFYHFGTYPSTYENPFLHAINNGGYNTRIEKYEDGGVLHVSFSYRYEAGRVIGDFKVMGTGFPED
 SVIFTDKIIRSNATVEHLHPMGDNDLDGSFTRTFLRDGGYSSVVDSHMHFKSAIHPSILQNGGPMFA
 FRRVEEDHSNTELGIVEYQHAFKTPDADAGEERV

Restriction Sites: SgfI-MluI

Cloning Scheme:

Cloning sites used for ORF Shutting:



Plasmid Map:


ACCN: NM_001291163

ORF Size: 1365 bp

OTI Disclaimer: The molecular sequence of this clone aligns with the gene accession number as a point of reference only. However, individual transcript sequences of the same gene can differ through naturally occurring variations (e.g. polymorphisms), each with its own valid existence. This clone is substantially in agreement with the reference, but a complete review of all prevailing variants is recommended prior to use. [More info](#)

OTI Annotation: This clone was engineered to express the complete ORF with an expression tag. Expression varies depending on the nature of the gene.

Components: The ORF clone is ion-exchange column purified and shipped in a 2D barcoded Matrix tube containing 10ug of transfection-ready, dried plasmid DNA (reconstitute with 100 ul of water).

RefSeq: [NM_001291163.2](#)

RefSeq Size: 2085 bp

RefSeq ORF: 1368 bp

Locus ID: 2052

UniProt ID: [P07099](#)

Cytogenetics: 1q42.12

Protein Families: Druggable Genome, Protease

Protein Pathways: Metabolism of xenobiotics by cytochrome P450

MW: 52.9 kDa

Gene Summary:

Epoxide hydrolase is a critical biotransformation enzyme that converts epoxides from the degradation of aromatic compounds to trans-dihydrodiols which can be conjugated and excreted from the body. Epoxide hydrolase functions in both the activation and detoxification of epoxides. Mutations in this gene cause preeclampsia, epoxide hydrolase deficiency or increased epoxide hydrolase activity. Alternatively spliced transcript variants encoding the same protein have been found for this gene.[provided by RefSeq, Dec 2008]