

Product datasheet for **RG238314**

GRB 14 (GRB14) (NM_001303422) Human Tagged ORF Clone

Product data:

Product Type:	Expression Plasmids
Product Name:	GRB 14 (GRB14) (NM_001303422) Human Tagged ORF Clone
Tag:	TurboGFP
Symbol:	GRB 14
Mammalian Cell Selection:	Neomycin
Vector:	pCMV6-AC-GFP (PS100010)
E. coli Selection:	Ampicillin (100 ug/mL)
ORF Nucleotide Sequence:	>RG238314 representing NM_001303422. Blue=ORF Red=Cloning site Green=Tag(s)

```
GCTCGTTTAGTGAACCGTCAGAATTTTGTAAACGACTCACTATAGGGCGGCCGGGAATTCGTCGACTG
GATCCGGTACCGAGGAGATCTGCCGCCGCGATCGCC
ATGAGTTTGAGTGCAAGAAGAGTCACTCTGCCTGCAATAACGCCAATAATTCTACAGAAAAGGGTGATT
AAAGTATACAGTGAAGATGAAACCAGCAGGGCTTTAGATGTACCCAGTGACATAACGGCTCGAGATGTT
TGTCAGCTGTTGATCCTGAAGAATCATTACATTGATGACCACAGCTGGACCCTTTTTGAGCACCTGCCT
CACATAGGTGTAGAAAAGAACAATAGAAGACCACGAACTGGTGATTGAAGTGCTATCCAACGGGGGATA
GAAGAAGAAAACAACTATACTTTAGAAAAAATTATGCCAAATATGAGTCTTTAAAAACCAATGTAT
TTTTTCCAGAGCATATGGTATCTTTTGAACCTGAAACCAATGGTGAAATATCCCCACACAGATTTTG
CAGATGTTTTCTGAGTTCAAGCACATATCCTGAAATTCATGGTTTCTTACATGCGAAAAGAACAGGGAAAG
AAGTCTTGAAAAAATTTACTTTTTTCTAAGAAGATCTGGTTTATATTTTTCTACTAAAGGAACATCA
AAGGAACCGCGCATTTCAGATTTTTTCAGCGAATTTGGCAATAGTGATTTTATGTGCTACTGGCAGGC
AAAAAAAAACATGGAGCACCGACTAACTATGGATTCTGCTTTAAGCCTAACAAAGCGGGAGGCCCGCA
GACCTGAAAATGCTCTGTGCAGAAGAAGAGCAGAGTAGGACGTGCTGGGTGACCGCGATTAGATTGCTT
AAGTATGGCATGCAGCTGTACCAGAATTATATGCATCCATATCAAGGTAGAAGTGGCTGCAGTTCACAG
AGCATATACCTATGAGAAGTATATCAGAGAATCCCTGGTAGCAATGGACTTCTCAGGCCAGAAAAGC
AGATTATAGAAAATCCCACTGAAGCCCTTTCAGTTGCGGTTGAAGAAGGACTCGCTTGGAGAAAAAA
GGATGTTTACGCCTGGGCACTACGGTAGCCCCACTGCCTCTTACAGAGCTCTGCCACAAACATGGCT
ATCCACCGGTCCCAGCCATGGTTTCACCACAAAATTTCTAGAGATGAGGCTCAGCGATTGATTATTCAG
CAAGGACTTGTGGATGGAGTTTTCTTGGTACGGGATAGTCAGAGTAACCCCAAACTTTCTGACTGTCA
ATGAGTCATGGACAAAAAATAAAGCACTTTCAAATATACCAAGTAGAAGATGACGGTGAAATGTTCCAC
ACACTGGATGATGGCCACACAAGATTTACAGATCTAATACAGCTGGTGGAGTTCTATCAACTCAATAAG
GGCGTTCTTCTTGAAGTTGAAACATTATTGTGCTAGGATTGCTCTC
ACGCGTACGCGGCCGCTCGAG - GFP Tag - GTTTAAAC
```



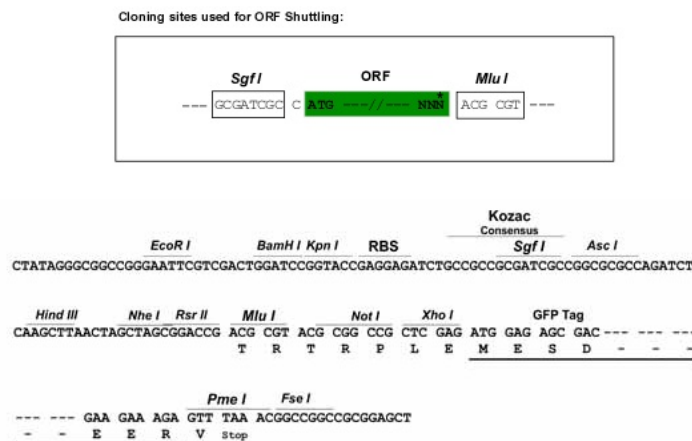
[View online »](#)

Protein Sequence: >Peptide sequence encoded by RG238314
 Blue=ORF Red=Cloning site Green=Tag(s)

MSLSARRVTLPAITPIILQKRVIKVVSEDETSRALDVPSDITARDVCQLLILKNHYIDDHSWTLFEHLP
 HIGVERTIEDHELVEI VLSNWGIEEENKLYFRKNYAKYEFFKNPMYFFPEHMSVFATETNGEISPTQIL
 QMFLSSSTYPEIHGFLHAKEQGKKSWKIYFFLRRSGLYFSTKGT SKEPRHLQFFSEFGNSDIYVSLAG
 KKKHGAPTNYGFCFKPNKAGGPRDLKMLCAEEEEQSRTCWVTAIRLLKYGMQLYQNYMHPYQGRSGCSSQ
 SISPMRSISENSLVAMDFSGQKSRVIENPTEALSVAVEEGLAWRKKGLRLGTHGSPASSQSSATNMA
 IHRSQPWFHKKISRDEAQRLLIQQGLVDGVFLVRDSQSNPKTFVLSMSGQKIKHFQIIPVEDDGEMFH
 TLDDGHRFTDLIQLVEFYQLNKGVL PCKLKHYCARIAL
 TRTRPLEMESDESGLPAMEIECRITGTLNGVEFELVGGEGTPEQGRMTNKMSTKGALTFSPYLLSHV
 MGYGFYHFGTYPSGYENPFLHAINNGGYNTRIEKYEDGGVLHVSFSYRYEAGRVIGDFKVMGTGFPED
 SVIFTDKIIRSNATVEHLHPMGDNDLDGSFTRTFLRDGGYSSVVD SHMHFKSAIHPSILQNGGPMFA
 FRRVEEDHSNTELGIVEYQHAFKTPDADAGEERV

Restriction Sites: SgfI-MluI

Cloning Scheme:



ACCN: NM_001303422

ORF Size: 1359 bp

OTI Disclaimer: The molecular sequence of this clone aligns with the gene accession number as a point of reference only. However, individual transcript sequences of the same gene can differ through naturally occurring variations (e.g. polymorphisms), each with its own valid existence. This clone is substantially in agreement with the reference, but a complete review of all prevailing variants is recommended prior to use. [More info](#)

OTI Annotation: This clone was engineered to express the complete ORF with an expression tag. Expression varies depending on the nature of the gene.

Components: The ORF clone is ion-exchange column purified and shipped in a 2D barcoded Matrix tube containing 10ug of transfection-ready, dried plasmid DNA (reconstitute with 100 ul of water).

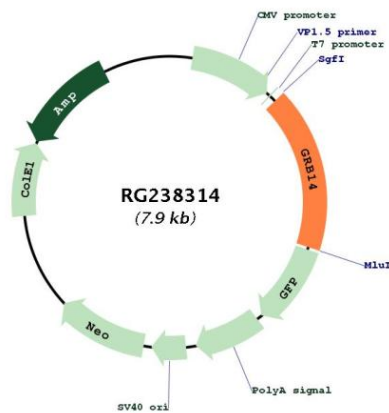
RefSeq: [NM_001303422.2](#)

RefSeq Size: 2165 bp
 RefSeq ORF: 1362 bp
 Locus ID: 2888

UniProt ID: [Q14449](#)
 Cytogenetics: 2q24.3
 MW: 52.4 kDa

Gene Summary: The product of this gene belongs to a small family of adapter proteins that are known to interact with a number of receptor tyrosine kinases and signaling molecules. This gene encodes a growth factor receptor-binding protein that interacts with insulin receptors and insulin-like growth-factor receptors. This protein likely has an inhibitory effect on receptor tyrosine kinase signaling and, in particular, on insulin receptor signaling. This gene may play a role in signaling pathways that regulate growth and metabolism. Alternative splicing results in multiple transcript variants. [provided by RefSeq, Dec 2014]

Product images:



Circular map for RG238314