

Product datasheet for **RG238309**

KIR5.1 (KCNJ16) (NM_001291623) Human Tagged ORF Clone

Product data:

Product Type:	Expression Plasmids
Product Name:	KIR5.1 (KCNJ16) (NM_001291623) Human Tagged ORF Clone
Tag:	TurboGFP
Symbol:	KIR5.1
Synonyms:	BIR9; KIR5.1
Mammalian Cell Selection:	Neomycin
Vector:	pCMV6-AC-GFP (PS100010)
E. coli Selection:	Ampicillin (100 ug/mL)
ORF Nucleotide Sequence:	>RG238309 representing NM_001291623. Blue=ORF Red=Cloning site Green=Tag(s)

```
GCTCGTTTAGTGAACCGTCAGAATTTTGTAAACGACTCACTATAGGGCGCCGGGAATTCGTCGACTG
GATCCGGTACCGAGGAGATCTGCCGCCCGATCGCC
ATGCTAAAAATGGTTCTAACTGAAAACCAACCAAGAAATAGCAACAAGTCTAGAATCTTACTACTA
CAAACTCACCTGGATCCCTAAGGGCACAGCAAAGAATGAGCTATTACGGCAGCAGCTATCATATTATC
AATGCGGACGCAAAATACCCAGGCTACCCGCCAGAGCACATTATAGCTGAGAAGAGAAGACAAGAAGA
CGATTACTTCACAAAGATGGCAGCTGTAATGTCTACTTCAAGCACATTTTGGAGAATGGGAAGCTAT
GTGTTGACATCTTCACCACTCTGTGGACACCAAGTGGCGCCATATGTTTGTGATATTTCTTTATCT
TATATTCTCTCGTGGTTGATATTTGGCTCTGTCTTTTGGCTCATAGCCTTTCATCATGGCGATCTATTA
AATGATCCAGACATCACACCTTGTGTTGACAACGTCCATTCTTTACAGGGGCTTTTTGTTCTCCCTA
GAGACCCAAACCACCATAGGATATGGTTATCGCTGTGTTACTGAAGAATGTTCTGTGGCCGTGCTCATG
GTGATCCCTCCAGTCCATCTTAAGTTGCATCATAAATACCTTTATCATTGGAGCTGCCTTGGCCAAAATG
GCAACTGCTCGAAAGAGAGCCCAAAACCATTCGTTTCAGCTACTTTGCACTTATAGGTATGAGAGATGGG
AAGCTTTGCCCTCATGTGGCGCATTTGGTATTTTCGGCCAAACCACGTGGTAGAAGGAACAGTTAGAGCC
CAACTTCTCCGTATACAGAAGACAGTGAAGGGAGGATGACGATGGCATTAAAGACCTCAAATAGTC
AACGACCAAAATCATCCTGGTCACCCCGTAACATTTGTCCATGAAATTGACCATGAGAGCCCTCTGTAT
GCCCTTGACCGCAAAGCAGTAGCCAAAGATAAATTTGAGATTTTGGTGACATTTATCTATACTGGTGAT
TCCACTGGAACATCTACCAATCTAGAAGCTCCTATGTTCCCGAGAAATTTCTCTGGGGCCATAGGTTT
AATGATGTCTTGGAAGTTAAGAGGAAGTATTACAAAGTGAAGTCTTACAGTTTGAAGGAAGTGTGGAA
GTATATGCCCCCTTTTGCAGTGCCAAGCAATTGGACTGGAAAGACCAGCAGCTCCACATAGAAAAAGCA
CCACCAGTTTCGAGAATCCTGCACGTGCGACACCAAGGCGAGACGAAGGTCATTTAGTGCAGTTGCCATT
GTCAGCAGCTGTGAAAACCTGAGGAGACCACCACTTCCGCCACACATGAATATAGGAAACACCTTAT
CAGAAAGCTCTCCTGACTTTAAACAGAATCTCTGTAGAATCCCAAATG
ACGCGTACGCGGCCGCTCGAG - GFP Tag - GTTTAAAC
```



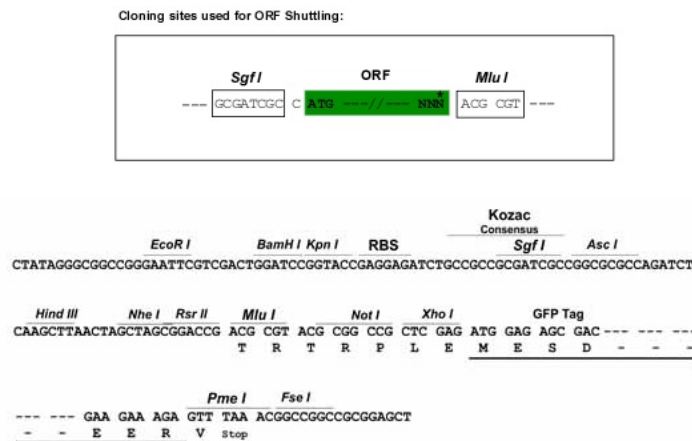
[View online »](#)

Protein Sequence: >Peptide sequence encoded by RG238309
 Blue=ORF Red=Cloning site Green=Tag(s)

MLKMYL TENPNQEIATSLEFLLLQNSPGLRAQQRMSYGGSSYHIINADAKYGPYPEHIIAEKRRARR
 RLLHKDGCNCVYFKHIFGEWGSYVVDIFTTLVDTKWRHMFVIFLSYILSWLIFGSVFWLIAFHGDLL
 NDPDITPCVDNVHSFTGAFLLSLETQTTIGYGYRCVTEECVAVLMVILQSIILSCIINTFIIGAALAKM
 ATARKRAQTIRFSYFALIGMRDGKLCMLWRIGDFRPNHVVEGTVRAQLLRYTEDSEGRMTMAFKDLKLV
 NDQIILVTPVTIVHEIDHESPLYALDRKAVAKDNFEILVTFIYTDGDTGSHQSRSSYVPREILWGHFR
 NDVLEVKRKYKVNCLQFEQSVVEYAPFCSAKQLDWDKQQLHIEKAPPVRESCTSDTKARRRFSVAVI
 VSSCENPEETTTSATHEYRETPYQKALLTLNRISVESQM
 TRTRPLEMESDESGLPAMEIECRITGTLNGVEFELVGGEGTPEQGRMTNKMSTKGALTFSPYLLSHV
 MGYGFYHFGTYPSTYENPFLHAINNGGYNTRIEKYEDGGVLHVSFSYRYEAGRVIGDFKVMGTGFPED
 SVIFTDKIIIRSNATVEHLHPMGDNDLDGSFTRTFLRDGGYSSVVDSHMHFKSAIHPSILQNGGPMFA
 FRRVEEDHSNTELGIVEYQHAFKTPDADAGEERV

Restriction Sites: SgfI-MluI

Cloning Scheme:



ACCN: NM_001291623

ORF Size: 1359 bp

OTI Disclaimer: The molecular sequence of this clone aligns with the gene accession number as a point of reference only. However, individual transcript sequences of the same gene can differ through naturally occurring variations (e.g. polymorphisms), each with its own valid existence. This clone is substantially in agreement with the reference, but a complete review of all prevailing variants is recommended prior to use. [More info](#)

OTI Annotation: This clone was engineered to express the complete ORF with an expression tag. Expression varies depending on the nature of the gene.

Components: The ORF clone is ion-exchange column purified and shipped in a 2D barcoded Matrix tube containing 10ug of transfection-ready, dried plasmid DNA (reconstitute with 100 ul of water).

RefSeq: [NM_001291623.1](#), [NP_001278552.1](#)

RefSeq Size: 3956 bp
 RefSeq ORF: 1257 bp

Locus ID: 3773

UniProt ID: [Q9NPI9](#)

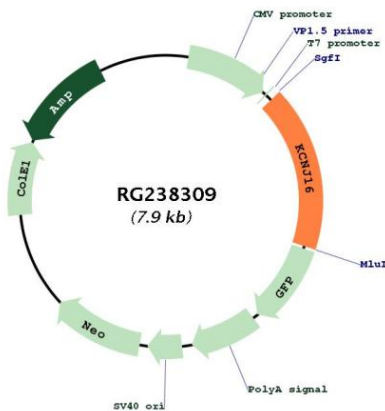
Cytogenetics: 17q24.3

Protein Families: Druggable Genome, Ion Channels: Potassium, Transmembrane

MW: 52.4 kDa

Gene Summary: Potassium channels are present in most mammalian cells, where they participate in a wide range of physiologic responses. The protein encoded by this gene is an integral membrane protein and inward-rectifier type potassium channel. The encoded protein, which tends to allow potassium to flow into rather than out of a cell, can form heterodimers with two other inward-rectifier type potassium channels. It may function in fluid and pH balance regulation. Alternatively spliced transcript variants have been found for this gene. [provided by RefSeq, Apr 2014]

Product images:



Circular map for RG238309