

Product datasheet for **RG238298**

HCLS1 (NM_001292041) Human Tagged ORF Clone

Product data:

Product Type:	Expression Plasmids
Product Name:	HCLS1 (NM_001292041) Human Tagged ORF Clone
Tag:	TurboGFP
Symbol:	HCLS1
Synonyms:	CTTNL; HS1; lckBP1; p75
Mammalian Cell Selection:	Neomycin
Vector:	pCMV6-AC-GFP (PS100010)
E. coli Selection:	Ampicillin (100 ug/mL)
ORF Nucleotide Sequence:	>RG238298 representing NM_001292041. Blue=ORF Red=Cloning site Green=Tag(s)

```
GCTCGTTTGTAGTAACCGTCAGAATTTTGTAAACGACTCACTATAGGGCGCCGGGAATTCGTCGACTG
GATCCGGTACCGAGGAGATCTGCCGCCGCGATCGCC
ATGTGGAAGTCTGTAGTGGGCCATGATGTGTCTGTTTCCGTGGAGACCCAGGGTATGATTGGGACACA
GATCCTGACTTTGTGAATGACATCTCTGAAAAGGAGCAACGATGGGGAGCCAAGACCATCGAGGGTCT
GGACGCACAGAACACATCAACATCCACCAGCTGAGGAACAAAGTATCAGAGGAGCATGATGTTCTCAGG
AAGAAAGAGATGGAGTCCAGGGCCAAAGCATCCCATGGCTATGGAGGTCGGTTTGGAGTAGAAAGAGAC
CGAATGGACAAGAGTGCAGTGGCCATGAGTATGTTGCCGAGGTGGAGAAGCACTCTTCAGACGGAT
GCTGCCAAAGGCTTTGGGGCAAGTACGGAGTTGAGAGGGACAGGGCAGACAAGTCAGCAGTCGGCTTT
GATTATAAAGGAGAAGTGGAGAAGCACACATCTCAGAAAGATTATGCCAAGGGCTTTGGTGGCCAGTAT
GGAATCCAGAAGGACCGAGTGGATAAAGACGCTGTCCGGCTTCAATGAAATGGAGGCCCGACCACAGCT
TATAAGAAGACGACGCCCATAGAAGCCGCTTCTAGTGGTACCCGTGGGCTGAAGGCGAAATTTGAGTCC
ATGGCTGAGGAGAAGAGGAGCGAGAGGAAGAGGAGAAGGCACAGCAGGTGGCCAGGAGGCAACAGGAG
CGAAAGGCTGTGACAAAGAGGAGCCCTGAGGCTCCACAGCCAGTATGCTATGGAAGAGCCAGCAGTA
CCGGCCCCACTGCCCAAGAAAATCTCCTCAGAGGCTGGCCTCCAGTTGGGACTCCTCCATCATCAGAG
TCTGAGCCTGTGAGAACCAGCAGGGAACCCAGTGCCTTGTGCCATTAGGCAGACTCTCCCGGAG
GACAATGAGGAGCCCCAGCTCTGCCCTAGGACTCTGGAAGGCCTCCAGGTGGAGGAAGAGCCAGTG
TACGAAGCAGAGCCTGAGCCTGAGCCCGAGCCTGAGCCCGAGCCTGAGAATGACTATGAGGACGTTGAG
GAGATGGACAGGCATGAGCAGGAGGATGAACCAGAGGGGACTATGAGGAGGTGCTCAGCCTGAAGAT
TCTTCTTTTCTCTGCTCTGGCTGGATCATCAGGCTGCCCGGCTGGGGCTGGGGCTGGGGCTGTGGCT
CTGGGGATCTCAGCTGTGGCTCTATATGATTACCAAGGAGAGGGAAGTATGAGCTTTCCTTTGATCCG
GACGACGTAATCACTGACATTGAGATGGTGGACGAGGGCTGGTGGCGGGGACGTTGCCATGGCCACTTT
GGACTCTCCCTGCAAATATGTCAAGCTTCTGGAG
ACGCGTACGCGGCCGCTCGAG - GFP Tag - GTTTAAAC
```



[View online »](#)

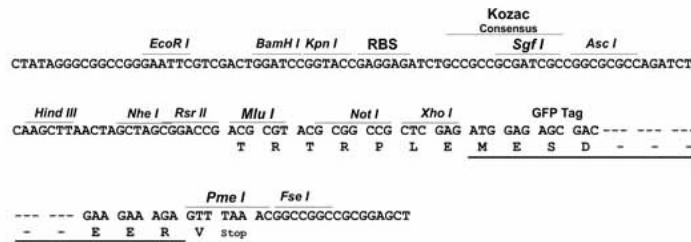
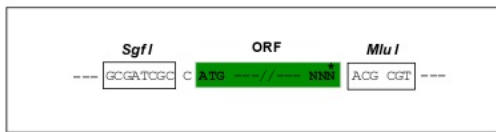
Protein Sequence: >Peptide sequence encoded by RG238298
 Blue=ORF Red=Cloning site Green=Tag(s)

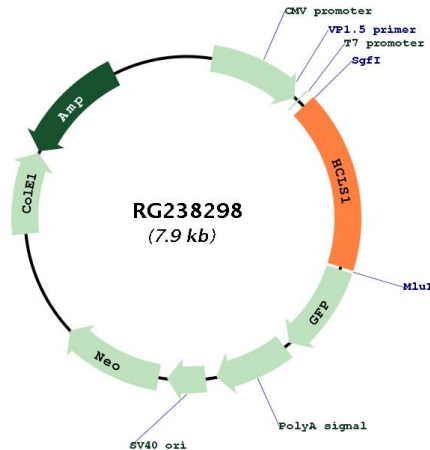
MWKSVVGHDSVSVETQGDDWDTPDFVNDISEKEQRWGAKTIEGSGRTEHINIHLRNKVSEHDVLR
 KKEMESGPKASHGYGGRFGVERDRMDKSAVGHEYVAEVEKHSSQDAAKFGGKYGVERDRADKSAVGF
 DYKGEVEKHTSQKDYAKFGGQYGIQKDRVDKSAVGFNEMEAPTTAYKKTPIEAASSGTRGLKAKFES
 MAEEKKRKEEEKAQQVARRQQRKAVTKRSPEAPQPVIAMEEPAVPAPLPKKISSEAWPPVGTTPPSSE
 SEPVRTSREHPVPLLPIRQTLPEDNEEPPALPPRTLEGLQVEEPPVYEAPEPEPEPEPEPENDYEDVE
 EMDRHEQEDEPEGDYEEVLEPEDSSFSALAGSSGCPAGAGAGAVALGISAVALYDYQGEESDELDFDP
 DDVITDIEMVDEGWWRGRCHGHFGLFPANYVKLLE
 TRTRPLEMESDESGLPAMEIECRITGTLNGVEFELVGGEGTPEQGRMTNKMSTKGALTFSPYLLSHV
 MGYGFYHFGTYPSTYENPFLHAINNGGYNTRIEKYEDGGVLHVSFSYRYEAGRVIGDFKVMGTGFPED
 SVIFTDKIIRSNATVEHLHPMGDNDLDGSFTRTFSLRDGGYSSVVDSHMHFKSAIHPSILQNGGPMFA
 FRRVEEDHSNTELGIVEYQHAFKTPDADAGEERV

Restriction Sites: SgfI-MluI

Cloning Scheme:

Cloning sites used for ORF Shutting:



Plasmid Map:


ACCN: NM_001292041

ORF Size: 1347 bp

OTI Disclaimer: The molecular sequence of this clone aligns with the gene accession number as a point of reference only. However, individual transcript sequences of the same gene can differ through naturally occurring variations (e.g. polymorphisms), each with its own valid existence. This clone is substantially in agreement with the reference, but a complete review of all prevailing variants is recommended prior to use. [More info](#)

OTI Annotation: This clone was engineered to express the complete ORF with an expression tag. Expression varies depending on the nature of the gene.

Components: The ORF clone is ion-exchange column purified and shipped in a 2D barcoded Matrix tube containing 10ug of transfection-ready, dried plasmid DNA (reconstitute with 100 ul of water).

RefSeq: [NM_001292041.1](#), [NP_001278970.1](#)

RefSeq Size: 1943 bp

RefSeq ORF: 1350 bp

Locus ID: 3059

UniProt ID: [P14317](#)

Cytogenetics: 3q13.33

Protein Families: Transcription Factors

Protein Pathways: Pathogenic Escherichia coli infection, Tight junction

MW: 50.2 kDa

Gene Summary:

Substrate of the antigen receptor-coupled tyrosine kinase. Plays a role in antigen receptor signaling for both clonal expansion and deletion in lymphoid cells. May also be involved in the regulation of gene expression.[UniProtKB/Swiss-Prot Function]