

Product datasheet for **RG238296**

TMPRSS5 (NM_001288751) Human Tagged ORF Clone

Product data:

Product Type:	Expression Plasmids
Product Name:	TMPRSS5 (NM_001288751) Human Tagged ORF Clone
Tag:	TurboGFP
Symbol:	TMPRSS5
Synonyms:	SPINESIN
Mammalian Cell Selection:	Neomycin
Vector:	pCMV6-AC-GFP (PS100010)
E. coli Selection:	Ampicillin (100 ug/mL)
ORF Nucleotide Sequence:	>RG238296 representing NM_001288751. Blue=ORF Red=Cloning site Green=Tag(s)

```
GCTCGTTTGTAGTAACCGTCAGAATTTTGTAAACGACTCACTATAGGGCGCCGGGAATTCGTCGACTG
GATCCGGTACCGAGGAGATCTGCCGCCCGGATCGCC
ATGACAGGGTGGGGACAGTGGAGGGCAATCATCTACATTCCTCCCGGATCCTCCTGGGGTGCAGCCCCAC
ATGATTGATGTTTCTCAGGCAGTGTGCTGGCGTTCATGCGACGTGGCTGTGCAGTGTGGGAGCCCTG
GGGCTGCTGGCCGGTGCAGGTGTTGGCTCATGGCTCCTAGTGCTGTATCTGTGCTCCTGCTGCCTCTCAG
CCCATTTCCGGGACCTTGCAGGATGAGGAGATAACTTTGAGCTGCTCAGAGGCCAGCGCTGAGGAAGCT
CTGCTCCCTGCACTTCCAAAACAGTATCTTTCAGAATAAACAGCGAAGACTTCTTGCTGGAAGCGCAA
GTGAGGGATCAGCCACGCTGGCTCCTGGTCTGCCATGAGGGCTGGAGCCCGCCCTGGGGCTGCAGATC
TGCTGGAGCCTTGGGCATCTCAGACTCACTCACCACAAGGGAGTAAACCTCACTGACATCAAACCAAC
AGTTCCAGGAGTTTGTCTCAGCTCTCCTAGACTGGGAGGCTTCTTGAGGAGGCGTGGCAGCCCAAG
AACTGCACTTCTGGTCAAGTTGTTCCCTCAGATGCTCTGAGTGTGGAGCGAGGCCCTGGCTTCC
CGGATAGTTGGTGGGAGTCTGTGGCTCCTGGCGCTGGCCGTGGCAGGCCAGCGTGGCCCTGGGCTTC
CGGCACACGTGTGGGGCTCTGTGCTAGCGCCACGCTGGGTGGTACTGCTGCACATTGTATGCACAGT
TTCAGGCTGGCCCGCTGTCCAGCTGGCGGGTTCATGCGGGCTGGTCAAGCACAGTGGCGTCAAGGCC
CACCAAGGGCTCTGGTGGAGAGGATTATCCACACCCCTCTACAGTGGCCAGAATCATGACTACGAC
GTCGCCCTCCTGAGGCTCCAGACCGCTCAACTTCTCAGACACTGTGGGCGCTGTGCTGCCGCGGCC
AAGGAACAGCATTTTCCGAAGGGCTCGCGGTGCTGGGTGCTGGCTGGGGCCACACCCACCTAGCCAT
ACTTACAGCTCGGATATGCTCCAGGACACGGTGGTGGCCCTTGTTCAGCACTCAGCTCTGCAACAGCTCT
TGCGTGTACAGCGGAGCCCTCACCCCCGATGCTTTGCGCTGGCTACCTGGACGGAAGGGCTGATGCA
TGCCAGGGAGATAGCGGGGGCCCTAGTGTGCCAGATGGGGACACATGGCGCCTAGTGGGGTGGTC
AGCTGGGGCGTGGCTGCGCAGAGCCCAATCACCCAGGTGCTACGCCAAGGTAGCTGAGTTTCTGGAC
TGGATCCATGACTGCTCAGGACTCCCTCCTC
ACGCGTACGCGGCCGCTCGAG - GFP Tag - GTTTAAAC
```



[View online >](#)

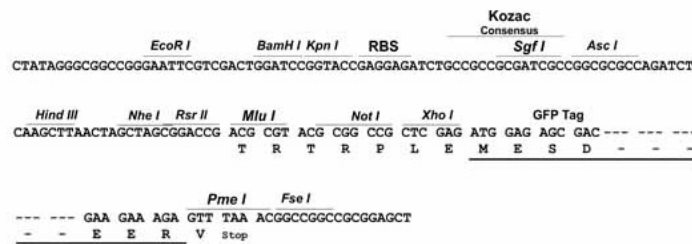
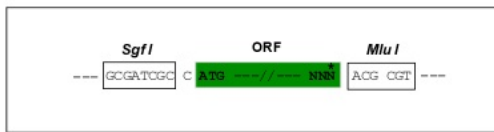
Protein Sequence: >Peptide sequence encoded by RG238296
 Blue=ORF Red=Cloning site Green=Tag(s)

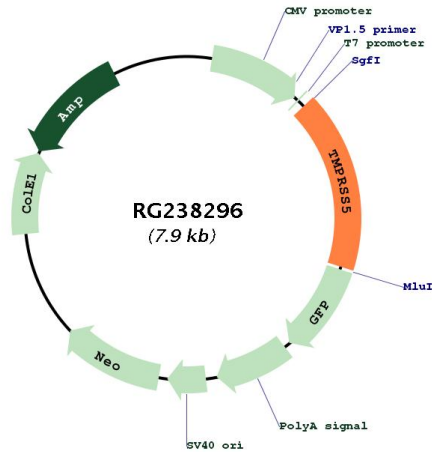
MTGWGQWRAIILHSPDPWPWGQPHMIDVSQAVCWRSMRRCVAVLGGALLAGAGVGSWLLVLYLCPAASQ
 PISGTLQDEEITLSCSEASAEALLPALPKTVSFRINSEDFLLAQVRDQPRWLLVCHEGWSPALGLQI
 CWSLGHLRLTHHKGVNLTDIKLNSSQEFQLSPRLGGFLEEAWQPRNNCTSGQVVSRLRCSECGARPLAS
 RIVGGQSVAPGRWPQASVALGFRHTCGGSVLAPRWVVTAAHCMHSFRLARLSSWRVHAGLVSHSAVRP
 HQGALVERIIPHPLYSAQNHDYDVALLRLQTALNFSDTVGAVCLPAKEQHFPGKSRWCWVSGWGHHPHSH
 TYSSDMLQDTPVPLFSTQLCNSSCVYSGALTPRMLCAGYLDGRADACQGDSSGGLVCPDGDTRWLVGVV
 SWGRGCAEPNHPGVYAKVAEFLDWIHDTAQDSLL
TRTRPLEMESDESGLPAMEIECRITGTLNGVEFELVGGGEGTPEQGRMTNKMSTKGALTFSPYLLSHV
 MGYGFYHFGTYPSGYENPFLHAINNGGYNTRIEKYEDGGVLHVSFSYRYEAGRVIGDFKVMGTGFPED
 SVIFTDKIIRSNATVEHLHPMGDNDLDGSFTRTFLRDGGYSSVVDSHMHFKSAIHPSILQNGGPMFA
 FRRVEEDHSNTELGIVEYQHAFKTPDADAGEERV

Restriction Sites: SgfI-MluI

Cloning Scheme:

Cloning sites used for ORF Shutting:



Plasmid Map:


ACCN: NM_001288751

ORF Size: 1344 bp

OTI Disclaimer: The molecular sequence of this clone aligns with the gene accession number as a point of reference only. However, individual transcript sequences of the same gene can differ through naturally occurring variations (e.g. polymorphisms), each with its own valid existence. This clone is substantially in agreement with the reference, but a complete review of all prevailing variants is recommended prior to use. [More info](#)

OTI Annotation: This clone was engineered to express the complete ORF with an expression tag. Expression varies depending on the nature of the gene.

Components: The ORF clone is ion-exchange column purified and shipped in a 2D barcoded Matrix tube containing 10ug of transfection-ready, dried plasmid DNA (reconstitute with 100 ul of water).

RefSeq: [NM_001288751.1](#), [NP_001275680.1](#)

RefSeq Size: 2364 bp

RefSeq ORF: 1347 bp

Locus ID: 80975

UniProt ID: [Q9H3S3](#)

Cytogenetics: 11q23.2

Protein Families: Druggable Genome, Protease, Transmembrane

MW: 49.2 kDa

Gene Summary: This gene encodes a protein that belongs to the serine protease family. Serine proteases are known to be involved in many physiological and pathological processes. Alternative splicing results in multiple transcript variants. [provided by RefSeq, Jan 2014]