

Product datasheet for **RG238293**

LILRB4 (NM_001278428) Human Tagged ORF Clone

Product data:

Product Type:	Expression Plasmids
Product Name:	LILRB4 (NM_001278428) Human Tagged ORF Clone
Tag:	TurboGFP
Symbol:	LILRB4
Synonyms:	CD85K; ILT-3; ILT3; LIR-5; LIR5
Mammalian Cell Selection:	Neomycin
Vector:	pCMV6-AC-GFP (PS100010)
E. coli Selection:	Ampicillin (100 ug/mL)
ORF Nucleotide Sequence:	>RG238293 representing NM_001278428. Blue=ORF Red=Cloning site Green=Tag(s)

```
GCTCGTTTGTAGTGAACCGTCAGAATTTGTAAACGACTCACTATAGGGCGCCGGGAATTCGTGACTG
GATCCGGTACCGAGGAGATCTGCCGCCGCGATCGCC
ATGATCCCCACCTTACGGCTCTGCTCTGCCTCGGGCTGAGTCTGGGCCCCAGGACCCACATGCAGGCA
GGGCCCTCCCCAAACCCACCCTCTGGGCTGAGCCAGGCTCTGTGATCAGCTGGGGAACTCTGTGACC
ATCTGGTGTGAGGGACCTGGAGGCTCGGGAGTACCGTCTGGATAAAGAGGAAAGCCAGCACCCCTGG
GACAGACAGAACCCTGGAGCCCAAGAACAAGGCCAGATTCTCCATCCCATCCATGACAGAGGACTAT
GCAGGGAGATACCGTGTACTATCGCAGCCCTGTAGGCTGGTCACAGCCAGTGACCCCTGGAGCTG
GTGATGACAGGAGCCTACAGTAAACCCACCCTTTCAGCCCTGCCGAGTCCCTTTGTGACCTCAGGAAAG
AGCGTGACCCTGTGTGTCAGTCACGGAGCCCAATGGACACTTTTCTTCTGATCAAGGAGCGGGCAGCC
CATCCCCACTGTCATCTGAGATCAGAGCACGGAGCTCAGCAGCACCCAGGCTGAATTCATGAGTCCCT
GTGACCTCAGTGACGGGGGACCTACAGGTGCTTTCAGCTCACACGGCTTCTCCACTACCTGTGTCA
CACCCAGTGACCCCTGGAGCTCATAGTCTCAGGATCCTTGGAGGGTCCCAGGCCCTCACCCACAAGG
TCCGTCTCAACAGCTGCAGGCCCTGAGGACCAGCCCTCATGCCTACAGGGTCACTCCCCACAGTGGT
CTGAGAAGGCACTGGGAGTACTGATCGGGTCTTGGTGGTCTCCATCCTGCTTCTCCTCCTCCTCCTC
TTCTCCTCCTCAACACTGGCGTCAGGAAAACACAGGACATTGGCCCAGAGACAGGCTGATTTCAA
CGTCTCCAGGGCTGCCGAGCCAGCCCAAGGACGGGGCTACAGAGGAGGTCCAGCCAGCTGTGCT
GACGTCCAGGGAGAAAATTTCTCAGGTGCTGCCGTGAAGAACACACAGCCTGAGGACGGGTGAAATG
GACACTCGGAGCCACACGATGAAGACCCCGAGCAGTACGTATGCCAAGGTGAAAACACTCCAGACCT
AGGAGAGAAAATGGCTCTCCTCCTCCCACTGTCTGGGAAATTCCTGGACACAAAGGACAGACAGGCA
GAAGAGGACAGACAGATGGACTGAGGCTGCTGCATCTGAAGCCCCCAGGATGTGACCTACGCCCGG
CTGCACAGCTTTACCCTCAGACAGAAGGCAACTGAGCCTCCTCCATCCCAGGAAGGGCCTCCTCAGCT
GAGCCAGTGTCTATGCCACTCTGGCCATCCAC
ACGCGTACGCGGCCGCTCGAG - GFP Tag - GTTAAAC
```



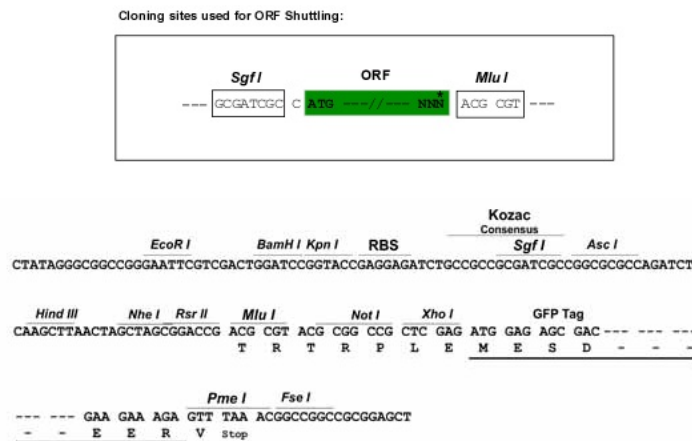
[View online »](#)

Protein Sequence: >Peptide sequence encoded by RG238293
 Blue=ORF Red=Cloning site Green=Tag(s)

MIPTFTALLCLGLSLGPRTHMQAGPLPKPTLWAEPGSVISWGN SVTIWCQGTLEAREYRLDKEESPAPW
 DRQNPLEPKNKARF SIPSMTEDYAGRYRCYYRSPV GWSQPSDPLEL VMTGAYSKPTLSALPSPLVTS GK
 SVTLLCQSRSPMDTFLLIKERAHPLLHLRSEHGAQQHQAEFPMSPVTSVHGGTYRCFSSHGFSHYLLS
 HPSDPLELIVSGSLEGRPSPTRSVSTAAGPEDQPLMPTG SVPHSGLRRHWEVLIGVLVVSILL SLLL
 FLLLQHW RQGHRTLAQRQADFQRPPGAAEPEPKDGGLQRRSSPAADVQGENFSGAAVKNTQPEDGVEM
 DTRSPHDEDPQAVTYAKVKHSRPRREMASPPSPLSGEFLDTKDRQAEEDRQMDTEAAASEAPQDVTYAR
 LHSFTLRQKATEPPPSQEGASPAEPSVYATLAIH
 TRTRPLEMESDESGLPAMEIECRITGTLNGVEFELVGGGEGTPEQGRMTNKMKSTKGALTFSPYLLSHV
 MGYGFYHFGTYPSGYENPFLHAINNGGYNTRIEKYEDGGVLHVSFSYRYEAGRVIGDFKVMGTGFPED
 SVIFTDKIIRSNATVEHLHPMGDNDLDGSFTRTFLRDGGYSSVVD SHMHFKSAIHPSILQNGGPMFA
 FRRVEEDHSNTELGIVEYQHAFKTPDADAGEERV

Restriction Sites: SgfI-MluI

Cloning Scheme:



ACCN: NM_001278428

ORF Size: 1344 bp

OTI Disclaimer: The molecular sequence of this clone aligns with the gene accession number as a point of reference only. However, individual transcript sequences of the same gene can differ through naturally occurring variations (e.g. polymorphisms), each with its own valid existence. This clone is substantially in agreement with the reference, but a complete review of all prevailing variants is recommended prior to use. [More info](#)

OTI Annotation: This clone was engineered to express the complete ORF with an expression tag. Expression varies depending on the nature of the gene.

Components: The ORF clone is ion-exchange column purified and shipped in a 2D barcoded Matrix tube containing 10ug of transfection-ready, dried plasmid DNA (reconstitute with 100 ul of water).

RefSeq: [NM_001278428.3](#), [NP_001265357.2](#)

RefSeq Size: 3902 bp

RefSeq ORF: 1347 bp

Locus ID: 11006

UniProt ID: [Q8NHJ6](#)

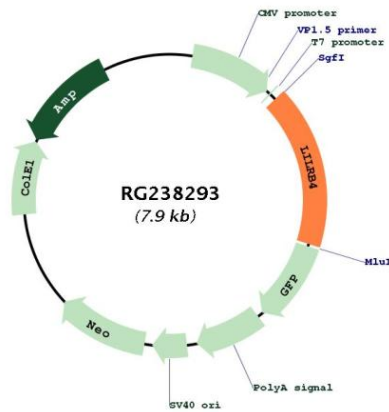
Cytogenetics: 19q13.42

Protein Families: Transmembrane

MW: 49.7 kDa

Gene Summary: This gene is a member of the leukocyte immunoglobulin-like receptor (LIR) family, which is found in a gene cluster at chromosomal region 19q13.4. The encoded protein belongs to the subfamily B class of LIR receptors which contain two or four extracellular immunoglobulin domains, a transmembrane domain, and two to four cytoplasmic immunoreceptor tyrosine-based inhibitory motifs (ITIMs). The receptor is expressed on immune cells where it binds to MHC class I molecules on antigen-presenting cells and transduces a negative signal that inhibits stimulation of an immune response. The receptor can also function in antigen capture and presentation. It is thought to control inflammatory responses and cytotoxicity to help focus the immune response and limit autoreactivity. Multiple transcript variants encoding different isoforms have been found for this gene. [provided by RefSeq, Jul 2008]

Product images:



Circular map for RG238293