

Product datasheet for **RG238287**

TTC23 (NM_001288616) Human Tagged ORF Clone

Product data:

Product Type:	Expression Plasmids
Product Name:	TTC23 (NM_001288616) Human Tagged ORF Clone
Tag:	TurboGFP
Symbol:	TTC23
Synonyms:	HCC-8
Mammalian Cell Selection:	Neomycin
Vector:	pCMV6-AC-GFP (PS100010)
E. coli Selection:	Ampicillin (100 ug/mL)
ORF Nucleotide Sequence:	>RG238287 representing NM_001288616. Blue=ORF Red=Cloning site Green=Tag(s)

```
GCTCGTTTGTAGTGAACCGTCAGAATTTTGTAAATACGACTCACTATAGGGCGCCGGGAATTCGTGACTG
GATCCGGTACCGAGGAGATCTGCCGCCGCGATCGCC
ATGCAAGAATCACAGGAAACCCACATATCCAACCACCTAGATGAAGTTGTTGCTGCTGTTAGCATCACT
CATAGAAAAGAAGTTCCAAAACAAGCTGCTTCAGACAGCACTATTCAGCCCTCCTCGAGAGAACTCCAC
CTCTGTGAAGAGAAAGCAAAGTCTATTCCAACAGTCATGAGTACAAACAGGCCGTCATGAGCTTGTG
CGTTGCGTAGCACTGACAAGAATTTGCTATGGAGACTCACATTGGAACTAGCAGAGGCACATGTTAAT
CTGGCTCAAGGCTACCTCAGCTGAAAGGACTGTCAGTCAAGCAAAACAACATGCAGAAAAAGCCAGA
CAAATCCTCGCCAACTCCATTGTGCTCCCTATAGTGAGAATACAGATGTTTTCAAGTTTTCCATTGAG
CTTTTCCATACCATGGGCAGAGCTTTACTCTCCCTTCAAAAATTTAAGGAAGCTGCAGAGAAATTTGACA
AAAGCAGAGAGACTTTCAAAGGAGCTGCTACAATGTGGAAGAATTATAAAGGAAGAATGGATAGAAATT
GAAGCACGGATCAGATTATCATTGACACAGGTGTATCAAGGTGAGAAAGTCAAAGAAGCTTTGTCC
CACTATCAAGCAGCTTTGGAATATGTTGAGATCAGTAAAGGTGAAACAAGTCGTGAGTGTGTACCCATA
TTGAGAGAATTAGCAGGTGTAGAGCAAGCCCTGGGACTCCACGATGTATCCATCAACCCTTCTCCAG
GCACATCTCATCTCTGAGTAGAAGCCCTCTCAAGTGGAGGCAGCAGACTCGGCACACATCGTCGCC
CATGCTGCTGTCGCTTCAGGGAGACACGAGCACCATGATGTAGCTGAGCAGTATTTTCAAGAGAGCATG
GCTCATCTTAAGGATTCTGAAGGATGGGAAGAACCAATTTCTTTCAATTCAAGATGAATTTTGGCAT
TTTCTACAAATGACTGGACAAAAAGAGAGAGCAACCTCGATCCTGAGAGAGTCCCTGGAAGCCAAAGTG
GAAGCATTGCGGATTTAGTCCCGAGGTGGCAGAGACATACCGCTCCTGGGAGGAGCAGACCTGGCG
CAGGGGAACACAGTGGGCCCCGAAGAACTGAAGAAGTGTCTCCAGATCCAGACCCTCTTATATGGA
CCGCAGGACAAAAGGACTCTGGCCACCCAGCAGGCCATGGGATGCTGTCCACGGCCCCCAAGGTTGCT
TCGAAGCCAAGGCAGGCATCAAAGCCAAAGTGGCCTTCTGCACCAGCATCCCTCAGGACACCCTGCTG
GGGAAGGCCCGCCCGGCACAACAGCAGAC
ACGCGTACGCGGCCGCTCGAG - GFP Tag - GTTAAAC
```



[View online »](#)

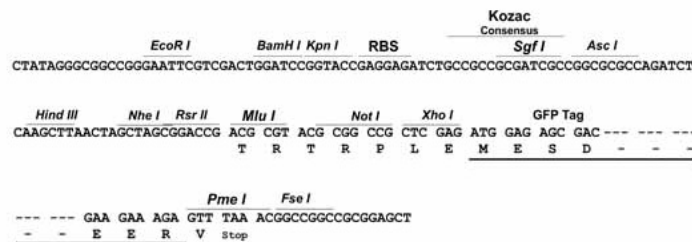
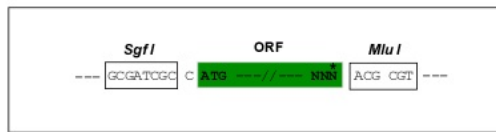
Protein Sequence: >Peptide sequence encoded by RG238287
 Blue=ORF Red=Cloning site Green=Tag(s)

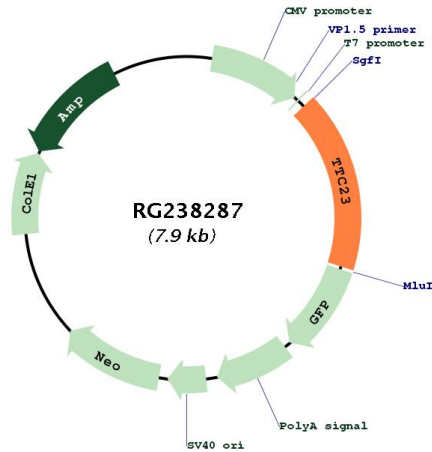
MQESQETHISNHLDEVVAAVSITHRKKFQNKLLQTALFQPPREKLHLCEEKAKSYSNSHEYKQAVHELV
 RCVALTRICYGDSHWKLAEAHVNLAQGYLQLKGLSLQAKQHAEKARQILANSIVPPYSENTDVFKFSIE
 LFHTMGRALLSLQKFKEAENLTKAERLSKELLQCGRIIKEEWIEIARIRLSFAQVYQGQKKSKEALS
 HYQAALYVEISKGETSRECVPIILRELAGEVEQALGLHDVSIHFLQAHLIILSRSPSQVEADSAHIVA
 HAAVASGRHEHHDVAEQYFQESMAHLKDEGMGRKFLSIQDEFCHFLQMTGQKERATSILRESLEAKV
 EAFGDFSPEVAETYRLLGGADLAQGNHSGARKLKKCLQIQTLLYGPDKRTLATQQAMGMLSTAPKVA
 SKPRQASKAKVAFCTSIPODTLLGKARPGTTAD
TRTRPLEMESDESGLPAMEIECRITGTLNGVEFELVGGGEGTPEQGRMTNKMSTKGALTFSPYLLSHV
 MGYGFYHFGTYPSGYENPFLHAINNGGYNTRIEKYEDGGVLHVSFSYRYEAGRVIGDFKVMGTGFPED
 SVIFTDKIIRSNATVEHLHPMGDNDLDGSFTRTFLRDGGYSSVVDSHMHFKSAIHPSILQNGGPMFA
 FRRVEEDHSNTELGIVEYQHAFKTPDADAGEERV

Restriction Sites: SgfI-MluI

Cloning Scheme:

Cloning sites used for ORF Shutting:



Plasmid Map:


ACCN:	NM_001288616
ORF Size:	1341 bp
OTI Disclaimer:	The molecular sequence of this clone aligns with the gene accession number as a point of reference only. However, individual transcript sequences of the same gene can differ through naturally occurring variations (e.g. polymorphisms), each with its own valid existence. This clone is substantially in agreement with the reference, but a complete review of all prevailing variants is recommended prior to use. More info
OTI Annotation:	This clone was engineered to express the complete ORF with an expression tag. Expression varies depending on the nature of the gene.
Components:	The ORF clone is ion-exchange column purified and shipped in a 2D barcoded Matrix tube containing 10ug of transfection-ready, dried plasmid DNA (reconstitute with 100 ul of water).
RefSeq:	NM_001288616.1 , NP_001275545.1
RefSeq Size:	3324 bp
RefSeq ORF:	1344 bp
Locus ID:	64927
UniProt ID:	Q5W5X9
Cytogenetics:	15q26.3
MW:	50 kDa
Gene Summary:	Participates positively in the ciliary Hedgehog (Hh) signaling.[UniProtKB/Swiss-Prot Function]