

Product datasheet for **RG238280**

ZNF3 (NM_001278290) Human Tagged ORF Clone

Product data:

Product Type:	Expression Plasmids
Product Name:	ZNF3 (NM_001278290) Human Tagged ORF Clone
Tag:	TurboGFP
Symbol:	ZNF3
Synonyms:	A8-51; HF.12; KOX25; PP838; Zfp113
Mammalian Cell Selection:	Neomycin
Vector:	pCMV6-AC-GFP (PS100010)
E. coli Selection:	Ampicillin (100 ug/mL)
ORF Nucleotide Sequence:	>RG238280 representing NM_001278290. Blue=ORF Red=Cloning site Green=Tag(s)

```
GCTCGTTTGTAGTGAACCGTCAGAATTTTGTAAACGACTCACTATAGGGCGCCGGGAATTCGTCGACTG
GATCCGGTACCGAGGAGATCTGCCGCCGCGATCGCC
ATGGAACCTCAGGCTGATCTCGTATCTCAGGAACCTCAGGCCCTGCTTGACAGTGTCTTCTTCAAAA
GTTCTGCCTTTCCGACAAGGACAGCCTGGGGGATGAGATGTTGGCGCTGCGCTCCTAAAGGCCAAG
TCCAGGAGCTGGTAACCTTTGAGGATGTAGTGTGTACTTCATCCGGAAGGAGTGAAGCGTTGGAA
CCTGCTCAGAGGACCTCTATAGAGATGTGATGCTGGAGAATTACGGGAATGTGTTCTCACTGGATCGT
GAGACCAGGACTGAAAATGATCAAGAAATTTCTGAAGACACAAGATCACATGGGGTCTACTGGGAAGA
TTTCAAAAGGATATTTCTCAGGGTCTCAAGTTTAAAGAAGCCTATGAACGAGAAGTCAGTCTGAAAAGG
CCGCTGGGGAACCTCCCTGGAGAAAGACTGAACAGGAAAATGCCAGATTTTGGTCAAGTGACAGTTGAG
GAGAAGCTAACCCCAAGGGGAGAGAGAAGCGAGAAATATAATGATTTTGGGAACAGCTTCACTGTGAAT
TCCAACCTTATCTCACATCAGAGACTCCCGTGGGAGACAGACCCCATAAAGTGTGATGAATGTAGCAAG
AGCTTTAATCGAACTTACAGCTTATTCAACATCAGAGAAATCCACTGGGAAAAGCCCTATGAATGT
AATGAGTGTGGGAAGGCCTTCAGCCAGAGCTCACACCTTATTGAGTGTGAGAAATCCACTGGGAA
AAACCTTATGAATGTAGTATTGTGGAAAACCTTCAGCTGTAGCTTGCCTCATTCTGCATCGGAGG
ATCCACACGGGGGAGAAAACCTATGAATGTAATGAGTGTGGGAAGACCTTCAGCTGGAGCTCCACCTC
ACCCACCATCAGAGAATCCACTGGTGGAGAAACCTACGCTGCAATGAATGTGGGAAGGCCTTCAGC
AGGAGCTCAACCTTATTACCATCAGAGAATCCACTGGAGAAAACCTATGAATGTAATGAATGT
GGGAAAGCCTTACGCCAGAGCTCACACCTTATCAGCACCAGAGAATCCACTGGAGAGAAGCCCTAC
GAATGTATGGAATGTGGAGGAAAGTTTACCTACAGTTCAGGCCTTATTGAGTGTGAGAAATCCACACC
GGGAGAACCCCTATGAATGTAGTGTGGGAAAGCCTTCAGGTACAGCTCGGCTCTTGTTCGCCAT
CAGAGAATTCACTGGAGAGAAGCCTTGAATGGGATCGGCATGAGCAAAAGCTCCCTCAGAGTTACG
ACCGAGTTAAATATCAGAGAGTCCAG
ACGCGTACGCGGCCGCTCGAG - GFP Tag - GTTTAAAC
```



[View online »](#)

Protein Sequence: >Peptide sequence encoded by RG238280
 Blue=ORF Red=Cloning site Green=Tag(s)

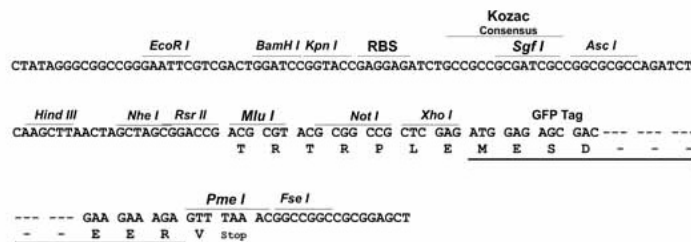
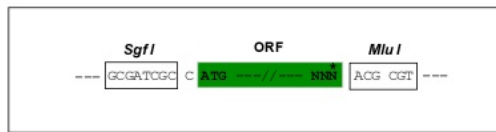
```

METQADLVSQEPQALLDSALPSKVPAFSDKDSLGDMLAAALLKAKSQELVTFEDVAVYFIRKEWKRL
PAQRDLYRDVMLENYGNVFLDRETRTENDQEISEDTRSHGVLGRFQKDISQGLKFKEAYEREVSLKR
PLGNSPGERLNRKMPDFGQVTVEEKLTPRGERSEKYNDFGNSFTVNSNLIHQRLPVGDRPHKCDECSK
SFNRTSDLIHQRIHTGEKPYECNECGKAFSQSSHLIQHQRIHTGEKPYECSDCGKTFSCSSALILHRR
IHTGEKPYECNECGKTFWSSTLTHHQRIHTGEKPYACNECGKAFSRSSTLIHQRIHTGEKPYECNEC
GKAFSQSSSHLYHQRIHTGEKPYECMECGKFTYSSGLIQHQRIHTGENPYECSECGKAFRYSSALVRH
QRHTGEKPLNGIGMSKSSLRVTELNIREST
TRTRPLEMESDESGLPAMEIECRITGTLNGVEFELVGGEGTPEQGRMTNKMSTKGALTFSPYLLSHV
MGYGFYHFGTYPSTYENPFLHAINNGGYNTRIEKYEDGGVLHVSFSYRYEAGRVIGDFKVMGTGFPED
SVIFTDKIIRSNATVEHLHPMGDNDLDGSFTRTFSLRDGGYSSVVDSHMHFKSAIHPSILQNGGPMFA
FRRVEEDHSNTELGIVEYQHAFKTPDADAGEERV
  
```

Restriction Sites: SgfI-MluI

Cloning Scheme:

Cloning sites used for ORF Shuttling:



ACCN: NM_001278290

ORF Size: 1338 bp

OTI Disclaimer: The molecular sequence of this clone aligns with the gene accession number as a point of reference only. However, individual transcript sequences of the same gene can differ through naturally occurring variations (e.g. polymorphisms), each with its own valid existence. This clone is substantially in agreement with the reference, but a complete review of all prevailing variants is recommended prior to use. [More info](#)

OTI Annotation: This clone was engineered to express the complete ORF with an expression tag. Expression varies depending on the nature of the gene.

Components: The ORF clone is ion-exchange column purified and shipped in a 2D barcoded Matrix tube containing 10ug of transfection-ready, dried plasmid DNA (reconstitute with 100 ul of water).

RefSeq: [NM_001278290.1](#), [NP_001265219.1](#)

RefSeq Size: 2736 bp

RefSeq ORF: 1341 bp

Locus ID: 7551

UniProt ID: [P17036](#)

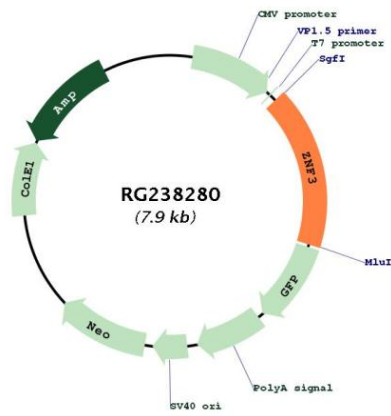
Cytogenetics: 7q22.1

Protein Families: Transcription Factors

MW: 50.9 kDa

Gene Summary: Involved in cell differentiation and/or proliferation.[UniProtKB/Swiss-Prot Function]

Product images:



Circular map for RG238280