

Product datasheet for **RG238279**

ZNF3 (NM_001278287) Human Tagged ORF Clone

Product data:

Product Type:	Expression Plasmids
Product Name:	ZNF3 (NM_001278287) Human Tagged ORF Clone
Tag:	TurboGFP
Symbol:	ZNF3
Synonyms:	A8-51; HF.12; KOX25; PP838; Zfp113
Mammalian Cell Selection:	Neomycin
Vector:	pCMV6-AC-GFP (PS100010)
E. coli Selection:	Ampicillin (100 ug/mL)
ORF Nucleotide Sequence:	>RG238279 representing NM_001278287. Blue=ORF Red=Cloning site Green=Tag(s)

```
GCTCGTTTGTAGTGAACCGTCAGAATTTTGTAAACGACTCACTATAGGGCGCCGGGAATTCGTCGACTG
GATCCGGTACCGAGGAGATCTGCCGCCGCGATCGCC
ATGGAACCTCAGGCTGATCTCGTATCTCAGGAACCTCAGGCCCTGCTTGACAGTGTCTTCTTCAA
GTTCTGCCTTTCCGACAAGGACAGCCTGGGGGATGAGATGTTGGCGCTGCGCTCCTAAAGGCCAAG
TCCAGGAGCTGGTAACCTTTGAGGATGTAGTGTGTACTTCATCCGGAAGGAGTGAAGCGTTGGAA
CCTGCTCAGAGGACCTCTATAGAGATGTGATGCTGGAGAATTACGGGAATGTGTTCTACTGGATCGT
GAGACCAGGACTGAAAATGATCAAGAAATTTCTGAAGACACAAGATCACATGGGGTCTACTGGGAAGA
TTTCAAAGGATATTTCTCAGGGTCTCAAGTTTAAAGAAGCCTATGAACGAGAAGTCAGTCTGAAAAGG
CCGCTGGGGAACCTCCCTGGAGAAAGACTGAACAGGAAAATGCCAGATTTGGTCAAGTGACAGTTGAG
GAGAAGCTAACCCCAAGGGGAGAGAGAAGCGAGAAATATAATGATTTGGGAACAGCTTCACTGTGAAT
TCCAACCTTATCTCACATCAGAGACTCCCGTGGGAGACAGACCCATAAGTGTGATGAATGTAGCAAG
AGCTTTAATCGAACTTACAGCTTATTCAACATCAGAGAATCCACACTGGGGAAAAGCCCTATGAATGT
AATGAGTGTGGGAAGGCCTTCAGCCAGAGCTCACACCTTATTGAGCATCAGAGAATCCACACTGGGGAA
AAACCTTATGAATGTAGTATTGTGGGAAAACCTTCAGCTGTAGCTTGCCTCATTCTGCATCGGAGG
ATCCACACGGGGGAGAAAACCTATGAATGTAATGAGTGTGGGAAGACCTTCAGCTGGAGCTCCACCTC
ACCCACCATCAGAGAATCCACACTGGTGGAGAAACCTACGCTGCAATGAATGTGGGAAGGCCTTCAGC
AGGAGCTCAACCTTATTACCATCAGAGAATCCACACTGGAGAAAACCTATGAATGTAATGAATGT
GGGAAAGCCTTCAGCCAGAGCTCACACCTTATCAGCACCAGAGAATCCACACTGGAGAGAAGCCCTAC
GAATGTATGGAATGTGGAGGAAAGTTTACCTACAGTTCAGGCCTTATTGAGCATCAAAGAATCCACACC
GGGAGAACCCCTATGAATGTAGTGTGGGAAAGCCTTCAGGTACAGCTCGGCTCTTGTTCGCCAT
CAGAGAATTCACACTGGAGAGAAGCCTTGAATGGGATCGGCATGAGCAAAGCTCCCTCAGAGTTACG
ACCGAGTTAAATATCAGAGAGTCCAG
ACGCGTACGCGGCCGCTCGAG - GFP Tag - GTTTAAAC
```



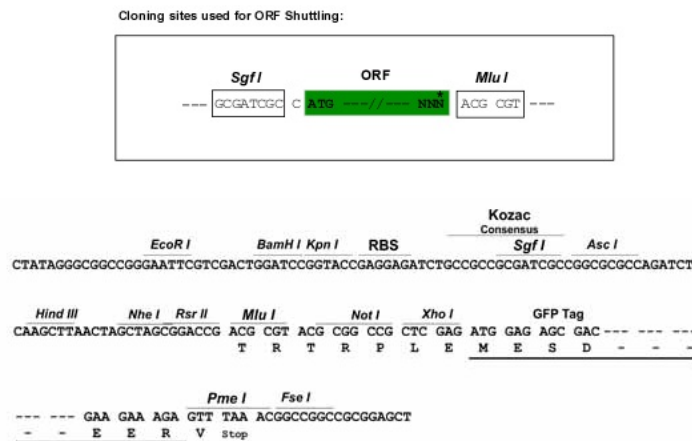
[View online »](#)

Protein Sequence: >Peptide sequence encoded by RG238279
 Blue=ORF Red=Cloning site Green=Tag(s)

METQADLVSQEPQALLDSALPSKVPAFSDKDSLGDLEMLAALLKAKSQELVTFEDVAVYFIRKEWKRL
 PAQRDLYRDVMLENYGNVFLDRETRTENDQEISEDTRSHGVLGRFQKDISQGLKFKEAYEREVSLKR
 PLGNSPGERLNRKMPDFGQVTVEEKLTPRGERSEKYNDFGNSFTVNSNLISHQRLPVGDRPHKCDECSK
 SFNRTSDLIQHQRHTGKPYECNECGKAFSQSSHLIQHQRHTGKPYECSDCGKTFSCSSALILHRR
 IHTGKPYECNECGKTFWSSTLTHHQRHTGKPYACNECGKAFSRSSTLIHHQRHTGKPYECNEC
 GKAFSQSSSHLYQHQRHTGKPYECMECGGKFTYSSGLIQHQRHTGENPYECSECGKAFRYSSALVRH
 QRHTGKPLNGIGMSKSSLRVTELNIREST
 TRTRPLEMESDESGLPAMEIECRITGTLNGVEFELVGGEGTPEQGRMTNKMSTKGALTFSPYLLSHV
 MGYGFYHFGTYPSGYENPFLHAINNGGYNTRIEKYEDGGVLHVSFSYRYEAGRVIGDFKVMGTGFPED
 SVIFTDKIIRSNATVEHLHPMGDNDLDGSFTRTFLRDGGYSSVVDSHMHFKSAIHPSILQNGGPMFA
 FRRVEEDHSNTELGIVEYQHAFKTPDADAGEERV

Restriction Sites: SgfI-MluI

Cloning Scheme:



ACCN: NM_001278287

ORF Size: 1338 bp

OTI Disclaimer: The molecular sequence of this clone aligns with the gene accession number as a point of reference only. However, individual transcript sequences of the same gene can differ through naturally occurring variations (e.g. polymorphisms), each with its own valid existence. This clone is substantially in agreement with the reference, but a complete review of all prevailing variants is recommended prior to use. [More info](#)

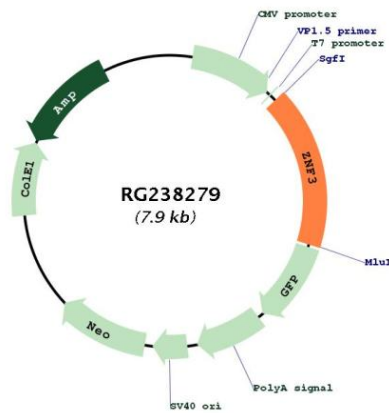
OTI Annotation: This clone was engineered to express the complete ORF with an expression tag. Expression varies depending on the nature of the gene.

Components: The ORF clone is ion-exchange column purified and shipped in a 2D barcoded Matrix tube containing 10ug of transfection-ready, dried plasmid DNA (reconstitute with 100 ul of water).

RefSeq: [NM_001278287.2](#)

RefSeq Size: 2891 bp
 RefSeq ORF: 1341 bp

 Locus ID: 7551
 UniProt ID: [P17036](#)
 Cytogenetics: 7q22.1
 Protein Families: Transcription Factors
 MW: 50.9 kDa
 Gene Summary: Involved in cell differentiation and/or proliferation.[UniProtKB/Swiss-Prot Function]

Product images:


Circular map for RG238279