

## Product datasheet for **RG238276**

### ZNF718 (NM\_001289930) Human Tagged ORF Clone

#### Product data:

Product Type:	Expression Plasmids
Product Name:	ZNF718 (NM_001289930) Human Tagged ORF Clone
Tag:	TurboGFP
Symbol:	ZNF718
Mammalian Cell Selection:	Neomycin
Vector:	pCMV6-AC-GFP (PS100010)
E. coli Selection:	Ampicillin (100 ug/mL)
ORF Nucleotide Sequence:	>RG238276 representing NM_001289930. Blue=ORF Red=Cloning site Green=Tag(s)

```
GCTCGTTTAGTGAACCGTCAGAATTTTGTAAACGACTCACTATAGGGCGGCCGGGAATTCGTCGACTG
GATCCGGTACCGAGGAGATCTGCCGCCGCGATCGCC
ATGTTGGAGAACTACAGAAACCTGGTCTCCCTGGGTGTTAGTATCTCTAACCCAGACCTGGTCACCAGT
CTGGAGCAAAGAAAAGAGCCCTACAATTTGAAGATACATGAAACAGCAGCCAGACCCCGAGCTGTGTGT
TCTCATTTACCCAAAACCTTTGGACAGTGCAGGGCATAGAAGATTCATTCCACAAAATTATACAAAA
GGACATGAGAAACGTGGACATGAGAATTTAAGAAAACTTGTAAAAGTATAAATGAGTGTAAAGGTGCAG
AAAGGTGGTTATAATAGAATTAACCAATGCTTATTAACACCCAGAAAAACAATTCAATCTAATATA
TGTGTCAAAGTTTTTCATAAATTTTCAAATTCAAACAAAGATAAGATAAGATATACTGGAGATAAAACC
TTTAAATGTAAAGAATGTGGCAAATCATTTACGTGCTCTCACGCCTAACTCAACACAAAAGAATTCAT
ACTGGAGAGAACCCTACACATGTGAAGAATGTGGCAAAGCCTTTAATTGGTCTCAATTCTTACTAAA
CATAAGAGAATTCATGCCAGAGAGAAATTCACAAGTGTGAAGAATGTGGTAAAGGCTTTACTCGGTCC
TCACACCTTACTAAACATAAGAGAATTCATACTGGAGAGAAACCCTACATATGTGAAAAATGTGGTAAA
GCTTTTAAACCAATCCTCAACCCTTAATTTACATAAGAGAATTCATTCTGCACAAAAATACTACAAATGT
GAAGAATGTGGTAAAGCCTTTAAGTGGTCTCATCCCTAATGAACATAAGAGAATTCATGCTGGAGAG
AAACCCTTCTCATGCGAAGAATGTGGCAATGTCTTTACCACATCCTCAGACTTTGCTAAACATAAGAGA
ATTCATACAGGAGAGAAACCCTACAAATGTGAAGAATGTGAAAAATCCTTTAATAGTCCACAACCTTT
ACGACACATAAGAGAATCCATACTGGAGAGAAACCCTACACATGTGAAGAATGTGAAAAAGCCTTTAAT
TGGTCCCAACCCCTTAATGTACACAAGAGAATTCACCTCTGGAAAAATCCCTACAAATGTGAAGATTGT
GGCAAAGCCTTTAAAGTGTTTGCAAACCTGCATAATCATAAGAAAATTCATACTGGAGAGAAACCCTAC
ATATGTAAACAATGTGGCAAAGCCTTTAAACAGTCCTCACACTTGAATAAACATAAGAAAATTCACACT
GTAGATAAACCCCTACAAATGTAAAGAATGCGGGAAAGCTTTTAAGCAGTACTCCAACCTTCTCAACAT
AAGAGAACTCATACTGGAGGAAAAATTT
ACGCGTACGCGGCCGCTCGAG - GFP Tag - GTTTAAAC
```



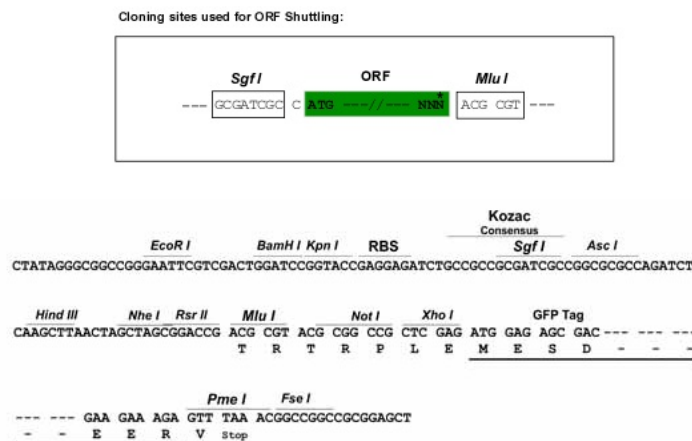
[View online »](#)

**Protein Sequence:** >Peptide sequence encoded by RG238276  
 Blue=ORF Red=Cloning site Green=Tag(s)

MLENYRNLVSLGVSISNPDLVTSLEQRKEPYNLKIHETAARPPAVCSHFTQNLWTVQGIEDSFHKLIPK  
 GHEKRGHENLRKTCCKSINECKVQKGGYNRINQCLLTTQKKTIQSNICVKVFHKFSNSNKDKIRYTGDKT  
 FKCKEKGKSFHVL SRLTQHKRIHTGENPYTCEECGKAFNWSSILTKHKRIHAREKFYKCEECGKGFTRS  
 SHLTKHKRIHTGEKPYICEKCGKAFNQSSTLNLHKRIHSAQKYKCEECGKAFKWSSSLNEHKRIHAGE  
 KPFSCCECGNVFTTSSDFAKHKRIHTGEKPYKCEECGKSFNRSTLTTTHKRIHTGEKPYTCEECGKAFN  
 WSSLN VHKRIHSGKNPYKCEDCGKAFKVFANLHNHKKIHTGEKPYICKQCGKAFKQSSHLNKHKKIHT  
 VDKPYKCKEKGKAFKQSNLPQHKRTHTGKFK  
 TRTRPLEMESDESGLPAMEIECRITGTLNGVEFELVGGEGTPEQGRMTNKMSTKGALTFSPYLLSHV  
 MGYGFYHFGTYPSGYENPFLHAINNGGYNTRIEKYEDGGVLHVSFSYRYEAGRVIGDFKVMGTGFPED  
 SVIFTDKIIRSNATVEHLHPMGDNDLDGSFTRTFLRDGGYSSVVD SHMHFKSAIHPSILQNGGPMFA  
 FRRVEEDHSNTELGIVEYQHAFKTPDADAGEERV

**Restriction Sites:** SgfI-MluI

**Cloning Scheme:**



**ACCN:** NM\_001289930

**ORF Size:** 1338 bp

**OTI Disclaimer:** The molecular sequence of this clone aligns with the gene accession number as a point of reference only. However, individual transcript sequences of the same gene can differ through naturally occurring variations (e.g. polymorphisms), each with its own valid existence. This clone is substantially in agreement with the reference, but a complete review of all prevailing variants is recommended prior to use. [More info](#)

**OTI Annotation:** This clone was engineered to express the complete ORF with an expression tag. Expression varies depending on the nature of the gene.

**Components:** The ORF clone is ion-exchange column purified and shipped in a 2D barcoded Matrix tube containing 10ug of transfection-ready, dried plasmid DNA (reconstitute with 100 ul of water).

**RefSeq:** [NM\\_001289930.1](#), [NP\\_001276859.1](#)

RefSeq Size: 4292 bp  
 RefSeq ORF: 1341 bp  
 Locus ID: 255403

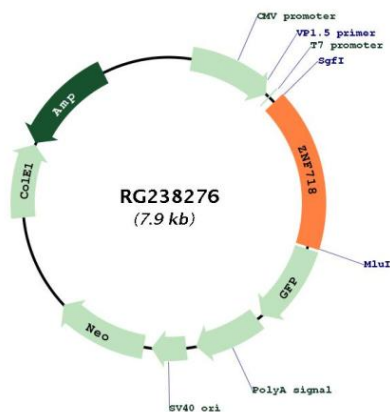
UniProt ID: [Q3SXZ3](#)

Cytogenetics: 4p16.3

MW: 52 kDa

Gene Summary: May be involved in transcriptional regulation.[UniProtKB/Swiss-Prot Function]

**Product images:**



Circular map for RG238276