

## Product datasheet for **RG238274**

### C1RL (NM\_001297640) Human Tagged ORF Clone

#### Product data:

Product Type:	Expression Plasmids
Product Name:	C1RL (NM_001297640) Human Tagged ORF Clone
Tag:	TurboGFP
Symbol:	C1RL
Synonyms:	C1r-LP; C1RL1; C1RLP; CLSPa
Mammalian Cell Selection:	Neomycin
Vector:	pCMV6-AC-GFP (PS100010)
E. coli Selection:	Ampicillin (100 ug/mL)
ORF Nucleotide Sequence:	>RG238274 representing NM_001297640. Blue=ORF Red=Cloning site Green=Tag(s)

```
GCTCGTTTGTAGTGAACCGTCAGAATTTGTAAATACGACTCACTATAGGGCGCCGGGAATTCGTCGACTG
GATCCGGTACCGAGGAGATCTGCCGCCGCGATCGCC
ATGCGCTGGACCCAGAGTGTGGGGAAATATCTCTGGAGAAGCCCTCACTCCAAAGGCTGTCCAGGCGCA
ATGTGGTGGCTGCTTCTCTGGGGAGTCTCCAGGCTTGCCCAACCCGGGGCTCCGTCCTCTTGCCCAA
GAGCTACCCAGCAGCTGACATCCCCGGGTACCCAGAGCCGTATGGCAAAGGCCAAGAGAGCAGCAGC
GACATCAAGGCTCCAGAGGGCTTTGCTGTGAGGCTCGTCTCCAGGACTTCGACCTGGAGCCGTCGCCAG
GACTGTGCAGGGACTCTGTCAATCTCATTCTCGTCCGTTCCGATCCAAGCCAGTTCTGTGGTCAGCAA
GGCTCCCCCTGGGCAGGCCCTGGTCAGAGGGAGTTTGTATCCTCAGGGAGGAGTTTGGCGCTGACC
TTCCGCACACAGCCTTCCCGGAGAACAAGACTGCCACCTCCACAAGGGCTTCTGGCCCTTACCAA
ACCGTGGGGCACTCACCTGTGCAACCCAGGGACCTGGAAGACAGACAGGATGGGGAGGAGGTTCTT
CAGTGTATGCCTGTCTGCGGACGGCCAGTACCCCCATTGCCAGAATCAGACGACCCTCGGTTCTTCC
AGAGCCAAAGCTGGGCAACTTCCCCTGGCAAGCCTTACCAGTATCCACGGCCGTGGGGCGGGCCCTG
CTGGGGACAGATGGATCCTCACTGTGCCACACCATTACCCCAAGGACAGTGTCTCTCAGGAAG
AACCAGAGTGTGAATGTGTTCTTGGGCCACACAGCCATAGATGAGATGCTGAAACTGGGGAACCCCT
GTCCACCGTGTGTTGTGCACCCGACTACCGTCAGAATGAGTCCATAACTTTAGCGGGGACATCGCC
CTCCTGGAGCTGCAGCACAGCATCCCCCTGGGCCCAACGTCCTCCCGGCTGTCTGCCGATAATGAG
ACCCTTACCAGCAGCGGCTTGTGGGCTACGTCAGTGGGTTTGGCATGGAGATGGGCTGGCTAACTACT
GAGCTGAAGTACTCGAGGCTGCCTGTAGCTCCCAGGGAGGCTGCAACGCCTGGCTCCAAAAGAGACAG
AGACCCGAGGTGTTTTCTGACAATATGTTCTGTGTTGGGGATGAGACGCAAAGGCACAGTGTCTGCCAG
GGGACAGTGGCAGCGTCTATGTGGTATGGGACAATCATGCCATCACTGGGTGGCCACGGGCATTGTG
TCCTGGGGCATAGGGTGTGGCGAAGGGTATGACTTCTACACCAAGGTGCTCAGCTATGTGGACTGGATC
AAGGGAGTGATGAATGGCAAGAAT
ACGCGTACGCGGCCGCTCGAG - GFP Tag - GTTTAAAC
```



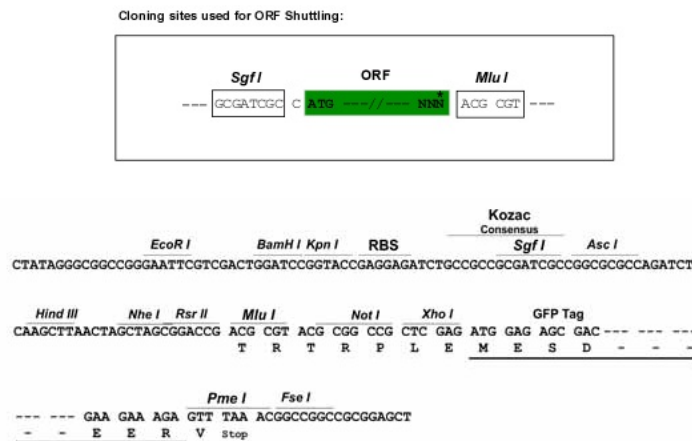
[View online >](#)

**Protein Sequence:** >Peptide sequence encoded by RG238274  
 Blue=ORF Red=Cloning site Green=Tag(s)

MPGPRVWGKYLWRSPHSGKCPGAMWLLWGLVQACPTRGSVLLAQELPQQLTSPGYPEPYGKGQESST  
 DIKAPEGFAVRLVFQDFLEPSQDCAGDSVTISFVGSQSPQFCGQGSPLGRPPGQREFVSSGRSLRLT  
 FRTQPSSENKTAHLHKGFLLYQTVGALTCATPGTWKDRQDGEEVLQCMPPVCGRPVTPIAQNQTTLGSS  
 RAKLGNFPWQAFTSIHGRGGGALLGDRWILTAHTIYPKDSVSLRKNQSVNVFLGHTAIDEMKLGNH  
 VHRVVVHPDYRQNESHNFSGDIALLELQHSIPLGPNVLPVCLPDNETLYRSGLLGYVSGFMEMGWLTT  
 ELKYSRLPVAPREACNAWLQKRQRPVFDSDNMFCVGDDETQRHSVCQGDGSGSVYVVDNHAHHWVATGIV  
 SWGIGCGEGYDFYTKVLSYVDWIKGVMNGKN  
**TRTRPLEMESDESGLPAMEIECRITGTLNGVEFELVGGEGTPEQGRMTNKMSTKGALTFSPYLLSHV**  
 MGYGFYHFGTYPSGYENPFLHAINNGGYNTRIEKYEDGGVLHVSFSYRYEAGRVIGDFKVMGTGFPED  
 SVIFTDKIIRSNATVEHLHPMGDNDLDGSFTRTFLRDGGYSSVVDSHMHFKSAIHPSILQNGGPMFA  
 FRRVEEDHSNTELGIVEYQHAFKTPDADAGEERV

**Restriction Sites:** SgfI-MluI

**Cloning Scheme:**



**ACCN:** NM\_001297640

**ORF Size:** 1335 bp

**OTI Disclaimer:** The molecular sequence of this clone aligns with the gene accession number as a point of reference only. However, individual transcript sequences of the same gene can differ through naturally occurring variations (e.g. polymorphisms), each with its own valid existence. This clone is substantially in agreement with the reference, but a complete review of all prevailing variants is recommended prior to use. [More info](#)

**OTI Annotation:** This clone was engineered to express the complete ORF with an expression tag. Expression varies depending on the nature of the gene.

**Components:** The ORF clone is ion-exchange column purified and shipped in a 2D barcoded Matrix tube containing 10ug of transfection-ready, dried plasmid DNA (reconstitute with 100 ul of water).

**RefSeq:** [NM\\_001297640.2](#)

RefSeq Size: 3277 bp

RefSeq ORF: 1338 bp

Locus ID: 51279

UniProt ID: [Q9NZP8](#)

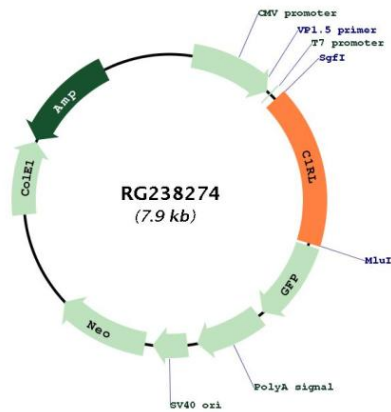
Cytogenetics: 12p13.31

Protein Families: Druggable Genome, Protease

MW: 49.5 kDa

Gene Summary: Mediates the proteolytic cleavage of HP/haptoglobin in the endoplasmic reticulum.  
[UniProtKB/Swiss-Prot Function]

### Product images:



Circular map for RG238274