

Product datasheet for **RG238272**

PDIA6 (NM_001282706) Human Tagged ORF Clone

Product data:

Product Type:	Expression Plasmids
Product Name:	PDIA6 (NM_001282706) Human Tagged ORF Clone
Tag:	TurboGFP
Symbol:	PDIA6
Synonyms:	ERP5; P5; TXNDC7
Mammalian Cell Selection:	Neomycin
Vector:	pCMV6-AC-GFP (PS100010)
E. coli Selection:	Ampicillin (100 ug/mL)
ORF Nucleotide Sequence:	>RG238272 representing NM_001282706. Blue=ORF Red=Cloning site Green=Tag(s)

```
GCTCGTTT TAGTGAACCGTCAGAATTTTGT AATACGACTCACTATAGGGCGCCGGGAATTCGTCGACTG
GATCCGGTACCGAGGAGATCTGCCGCC GCGATCGCC
ATGTATCCATCAACCACCATGGCTAATGCACCCGGTCTGGTGAGCTGTACCTTCTTTCTGGCAGTGAAT
GGTCTGTATTCTCTAGTGATGTGATCGAATTAACCCATCGAATTTCAACCAGAAAGTTATTCAG
AGTGATAGTTTGTGGCTGTAGAATTCTATGCTCCATGGTGTGGTCACTGTCAAAGATTAACACCAGAA
TGGAAAGAAAGCAGCAACTGCATTAAGATGTTGTCAAAGTTGGTGCAGTTGATGCAGATAAGCATCAT
TCCCTAGGAGTCAAGTGGTGTTCAGGGATTTCTACCATTAAAGATTTTGGATCCAACAAAAACAGA
CCAGAAGATTACCAAGGTGGCAGAACTGGTGAAGCCATTGTAGATGCTGCGCTGAGTGTCTGCGCCAG
CTCGTGAAGGATCGCCTCGGGGACGGAGCGGAGGATACAGTTCTGGAACAAGGCAGAAAGTATAGT
TCAAGTAAGAAGGATGTGATTGAGCTGACAGACGACGCTTTGATAAGAATGTTCTGGACAGTGAAGAT
GTTTGGATGGTTGAGTTCTATGCTCCTTGGTGTGGACACTGCAAAAACCTAGAGCCAGAGTGGGCTGCC
GCAGCTTCAGAAGTAAAAGAGCAGACGAAAGGAAAAGTGAACCTGGCAGCTGTGGATGCTACAGTCAAT
CAGGTTCTGGCCTCCCGATACGGGATTAGAGGATTTCTACAATCAAGATATTTCAAGAAAGGCGAGTCT
CCTGTGGATTATGACGGTGGGCGGACAAGATCCGACATCGTGTCCCGGCCCTTGATTTGTTTTCTGAT
AACGCCACCTCCTGAGCTGCTTGAGATTATCAACGAGGACATTGCCAAGAGGACGTGTGAGGAGCAC
CAGCTCTGTGTTGTGGCTGTGCTGCCCATATCCTTGATACTGGAGCTGCAGGCAGAAATCTTATCTG
GAAGTTCTTCTGAAGTTGGCAGACAAATACAAAAGAAAATGTGGGGTGGCTGTGGACAGAAAGCTGGA
GCCAGTCTGAACTTGAGACCGGTTGGGGATTGGAGGTTTGGGTACCCCGCCATGGCCGCCATCAAT
GCACGCAAGATGAAATTTGCTCTGCTAAAAGGCTCCTTCAGTGAGCAAGGCATCAACGAGTTTCTCAGG
GAGCTCTCTTTGGCGTGGCTCCACGGCACCTGTAGGAGGCGGGCTTTCCCTACCATCGTTGAGAGA
GAGCCTTGGGACGGCAGGGATGGCGAGCTTCCCGTGGAGGATGACATTGACCTCAGTGATGTGGAGCTT
GATGACTTAGGAAAGATGAGTTG
ACGCGTACGCGGCCGCTCGAG - GFP Tag - GTTTAAAC
```



[View online >](#)

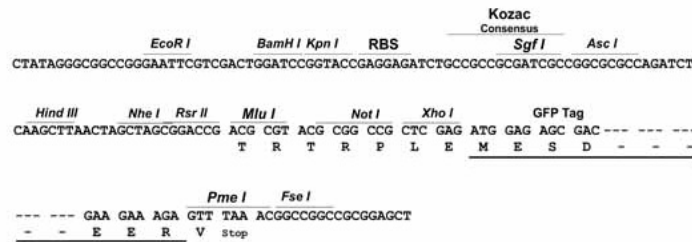
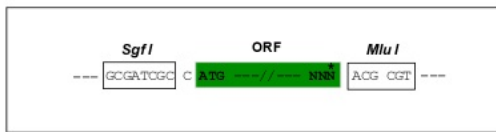
Protein Sequence: >Peptide sequence encoded by RG238272
 Blue=ORF Red=Cloning site Green=Tag(s)

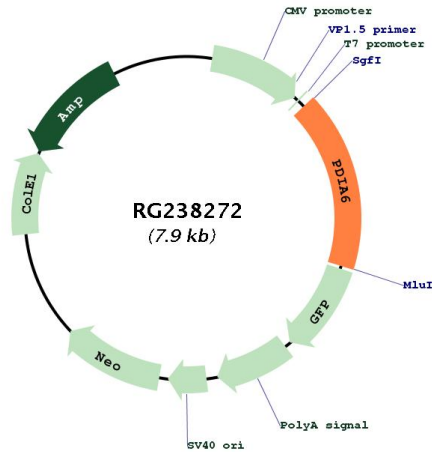
MYPSTTMANAPGLVSCFFFLAVNGLYSSDDVIELTPSNFNREVIQSDSLWLVFYPWCGHCQRLTPE
 WKKAATALKDVVKVGAVDADKHHSLGGQYGVQGFPTIKIFGSNKNRPEDYQGGRTGEAIVDAALSALRQ
 LVKDRLGGRSGGYSSGKQGRSDSSSKDVIELTDDSFDKNVLDSDEVMMVEFYAPWCGHCKNLEPEWAA
 AASEVKEQTKGKVKLAAVDATVNQVLASRYGIRGFPTIKIFQKGESPVYDGGRTSDIVSRALDLFSD
 NAPPPELLEIINEDIAKRTCEEHQLCVVAVLPHILDTGAAGRNSYLEVLLKLADKYKKMMWGLWTEAG
 AQSELETALGIGGFYPAMAAINARKMKFALLKGSFSEQGINEFLRELSFGRGSTAPVGGAFPTIVER
 EPWDGRDGELPVEDDIDLSDVELDDLKDEL
TRTRPLEMESDESGLPAMEIECRITGTLNGVEFELVGGEGTPEQGRMTNKMSTKGALTFSPYLLSHV
 MGYGFYHFGTYPSGYENPFLHAINNGGYNTRIEKYEDGGVLHVSFSYRYEAGRVIGDFKVMGTGFPED
 SVIFTDKIIRSNATVEHLHPMGDNDLGSFTRTFSLRDGGYSSVVDSHMHFKSAIHPSILQNGGPMFA
 FRRVEEDHSNTELGIVEYQHAFKTPDADAGEERV

Restriction Sites: SgfI-MluI

Cloning Scheme:

Cloning sites used for ORF Shutting:



Plasmid Map:


ACCN: NM_001282706

ORF Size: 1335 bp

OTI Disclaimer: The molecular sequence of this clone aligns with the gene accession number as a point of reference only. However, individual transcript sequences of the same gene can differ through naturally occurring variations (e.g. polymorphisms), each with its own valid existence. This clone is substantially in agreement with the reference, but a complete review of all prevailing variants is recommended prior to use. [More info](#)

OTI Annotation: This clone was engineered to express the complete ORF with an expression tag. Expression varies depending on the nature of the gene.

Components: The ORF clone is ion-exchange column purified and shipped in a 2D barcoded Matrix tube containing 10ug of transfection-ready, dried plasmid DNA (reconstitute with 100 ul of water).

RefSeq: [NM_001282706.1](#), [NP_001269635.1](#)

RefSeq Size: 2552 bp

RefSeq ORF: 1338 bp

Locus ID: 10130

UniProt ID: [Q15084](#)

Cytogenetics: 2p25.1

Protein Families: Druggable Genome

MW: 49.1 kDa

Gene Summary:

This gene encodes a member of the disulfide isomerase (PDI) family of endoplasmic reticulum (ER) proteins that catalyze protein folding and thiol-disulfide interchange reactions. The encoded protein has an N-terminal ER-signal sequence, two catalytically active thioredoxin (TRX) domains, a TRX-like domain, and a C-terminal ER-retention sequence. This protein inhibits the aggregation of misfolded proteins and exhibits both isomerase and chaperone activity. Alternative splicing results in multiple transcript variants encoding different isoforms. [provided by RefSeq, Dec 2016]