

Product datasheet for **RG238267**

beta IV Tubulin (TUBB4A) (NM_001289129) Human Tagged ORF Clone

Product data:

Product Type:	Expression Plasmids
Product Name:	beta IV Tubulin (TUBB4A) (NM_001289129) Human Tagged ORF Clone
Tag:	TurboGFP
Symbol:	TUBB4A
Synonyms:	beta-5; DYT4; TUBB4
Mammalian Cell Selection:	Neomycin
Vector:	pCMV6-AC-GFP (PS100010)
E. coli Selection:	Ampicillin (100 ug/mL)
ORF Nucleotide Sequence:	>RG238267 representing NM_001289129. Blue=ORF Red=Cloning site Green=Tag(s)

```
GCTCGTTTGTAGTGAACCGTCAGAATTTTGTAAACGACTCACTATAGGGCCGCCGGGAATTCGTCGACTG
GATCCGGTACCGAGGAGATCTGCCGCCGCGATCGCC
ATGCGGGAGATCGTGCACCTGCAGGCCGCCAGTGCGGCAACAGATCGGGGCCAAGTTTTGGGAGGTT
ATCAGTGACGAACATGGCATCGACCCACAGGCACATACCATGGGGACAGTGACCTGCAACTGGAGAGG
ATCAACGTGTACTACAACGAGGCCACAGGAGGAAATTATGTCCCGAGAGCGGTGCTGGTGGACCTGGAA
CCCGGCACCATGGACTCTGTCCGTTCTGGCCCTTCGGTCAGATCTTTCGGCCGGACAACCTCGTGTTC
GGCCAATCCGGAGCCGGCAACAACCTGGCAAAGGGGCACTACACGGAGGGCGCAGAGCTGGTGGACGCT
GTCTGGACGTAGTCCGGAAGGAGGCCGAGAGCTGCGACTGCCTTCAGGGCTTCCAGCTGACCCACTCG
CTGGGGGGTGGCAGGGGTCCGGAATGGGCACGCTGCTCATCAGTAAGATCCGCGAGGAGTCCAGAC
CGCATCATGAACACCTTCAGCGTGGTGCCTCGCCCAAAGTGTCAGACACGGTGGTGGAGCCCTACAAC
GCCACGCTGTCTGTGCACCAGCTGGTGGAGAATACGGATGAGACCTACTGCATCGACAACAGGCACTC
TACGACATCTGTTCCGACCCCTCAAGCTGACCACCCCACTACGGGGACCTCAACCACCTGGTGTTCG
GCCACCATGAGCGGGTCAACACCTGCCTGCGCTTCCCGGGCCAGCTGAACGCCGACCTGCGCAAGCTG
GCCGTCAACATGGTTCCTTTCTCGCTGCACCTCTTTCATGCCCGGCTTCGCACCCCTGACCAGCCGG
GGCAGCCAGCAGTACCGGGCCCTGACGGTGCCTGAGCTCAGCAGCAGATGTTTCGATGCCAAGAACATG
ATGGCGGCGTGCACCCGCGCCACGGCCGCTACCTGACCGTGCAGAGCAAGAACAGCAGCTACTTCGTGGAGTGGATC
ATGAAGGAGGTGGACGAGCAGATGCTGAGCGTGCAGAGCAAGAACAGCAGCTACTTCGTGGAGTGGATC
CCCAACAACGTGAAGACGGCCGTGTGCGACATCCCGCCCCGCGGCTGAAGATGGCCGCGACCTTATC
GGCAACAGCAGGCCATCCAGGAGCTGTTCAAGCGCATCTCCGAGCAGTTCACGGCCATGTTCCGGCGC
AAGGCCTTCTGCACTGGTACACGGGCGAGGGCATGGACGAGATGGAGTTCACCGAGGCCGAGAGCAAC
ATGAATGACCTGGTATCTGAGTACCAGCAGTACCAGGACGCCACGGCCGAGGAGGGCGAGTTCGAGGAG
GAGGCGGAGGAGGAGGTGGCC
ACGCGTACGCGGCCGCTCGAG - GFP Tag - GTTTAAAC
```



[View online >](#)

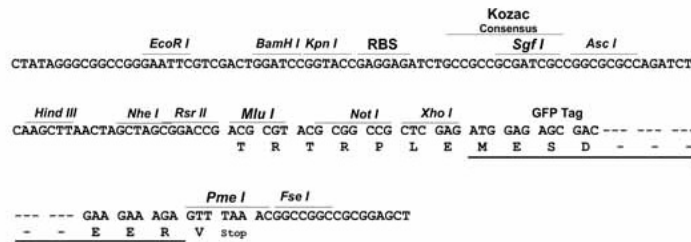
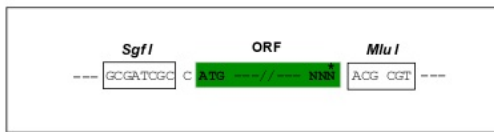
Protein Sequence: >Peptide sequence encoded by RG238267
 Blue=ORF Red=Cloning site Green=Tag(s)

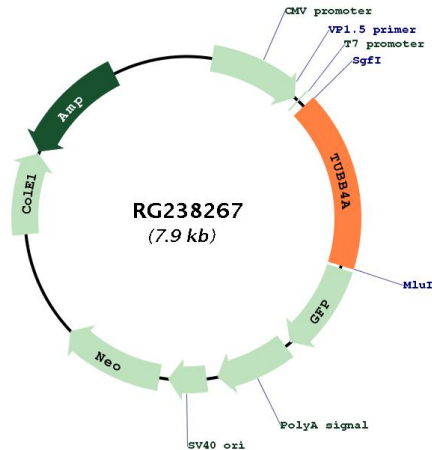
MREIVHLQAGQCGNQIGAKFWEVISDEHGIDPTGTYHGDSLQLERINVYNEATGGNYVPRAVLVDLE
 PGTMSVRSRSGPFQIFRPDNFVFGQSGAGNNWAKGHYTEGAELVDAVLVVRKEAESCDCLQGFLTHS
 LGGGTGSGMGTLLISKIREEPDRIMNTFSVVPSPKVSOTVVEPYNATLSVHQLVENTDETYCIDNEAL
 YDICFRTLKLTPTTYGDLNHLVSATMSGVTTCLRFPGQLNADLRKLAVNMVFPRLHFFMPGFAPLTSR
 GSQQYRALTVPELTQQMFDAKNMMAACDRHGRYLTVAAVFRGRMSMKEVDEQMLSVQSKNSSYFVEWI
 PNNVKTAVCDIPRGLKMAATFIGNSTAIQELFKRISEQFTAMFRRKAFLHWYTGEGMDEMEFTEAESN
 MNDLVSEYQQYQDATAEEEGEFEEEEEEVA
 TRTRPLEMESDESGLPAMEIECRITGTLNGVEFELVGGGEGTPEQGRMTNKMSTKGALTFSPYLLSHV
 MGYGFYHFGTYPSGYENPFLHAINNGGYNTRIEKYEDGGVLHVSFSYRYEAGRVIGDFKVMGTGFPED
 SVIFTDKIIRSNATVEHLHPMGDNDLDGSFTRTFLRDGGYSSVVDSHMHFKSAIHPSILQNGGPMFA
 FRRVEEDHSNTELGIVEYQHAFKTPDADAGEERV

Restriction Sites: SgfI-MluI

Cloning Scheme:

Cloning sites used for ORF Shutting:



Plasmid Map:


ACCN: NM_001289129

ORF Size: 1332 bp

OTI Disclaimer: The molecular sequence of this clone aligns with the gene accession number as a point of reference only. However, individual transcript sequences of the same gene can differ through naturally occurring variations (e.g. polymorphisms), each with its own valid existence. This clone is substantially in agreement with the reference, but a complete review of all prevailing variants is recommended prior to use. [More info](#)

OTI Annotation: This clone was engineered to express the complete ORF with an expression tag. Expression varies depending on the nature of the gene.

Components: The ORF clone is ion-exchange column purified and shipped in a 2D barcoded Matrix tube containing 10ug of transfection-ready, dried plasmid DNA (reconstitute with 100 ul of water).

RefSeq: [NM_001289129.1](#), [NP_001276058.1](#)

RefSeq Size: 2431 bp

RefSeq ORF: 1335 bp

Locus ID: 10382

UniProt ID: [P04350](#)

Cytogenetics: 19p13.3

Protein Families: Druggable Genome

Protein Pathways: Gap junction, Pathogenic Escherichia coli infection

MW: 49.6 kDa

Gene Summary:

This gene encodes a member of the beta tubulin family. Beta tubulins are one of two core protein families (alpha and beta tubulins) that heterodimerize and assemble to form microtubules. Mutations in this gene cause hypomyelinating leukodystrophy-6 and autosomal dominant torsion dystonia-4. Alternate splicing results in multiple transcript variants encoding different isoforms. A pseudogene of this gene is found on chromosome X. [provided by RefSeq, Jan 2014]