

## Product datasheet for **RG238266**

### CD55 (NM\_001300902) Human Tagged ORF Clone

#### Product data:

Product Type:	Expression Plasmids
Product Name:	CD55 (NM_001300902) Human Tagged ORF Clone
Tag:	TurboGFP
Symbol:	CD55
Synonyms:	CHAPLE; CR; CROM; DAF; TC
Mammalian Cell Selection:	Neomycin
Vector:	pCMV6-AC-GFP (PS100010)
E. coli Selection:	Ampicillin (100 ug/mL)
ORF Nucleotide Sequence:	>RG238266 representing NM_001300902. Blue=ORF Red=Cloning site Green=Tag(s)

```
GCTCGTTTAGTGAACCGTCAGAATTTTGTAAACGACTCACTATAGGGCGCCGGGAATTCGTCGACTG
GATCCGGTACCGAGGAGATCTGCCGCCGCGATCGCC
ATGACCGTCGCGCGGCCGAGCGTGCCCGCGCGCTGCCCTCCTCGGGGAGCTGCCCGGCTGCTGCTG
CTGGTGTGTTGTGCCTGCCGGCGTGTGGGTGACTGTGGCCTTCCCCAGATGTACCTAATGCCAG
CCAGCTTTGGAAGGCCGTACAAGTTTTCCCGAGGATACTGAATAACGTACAAATGTGAAGAAAGCTTT
GTGAAAATTCCTGGCGAGAAGGACTCAGTGATCTGCCTAAGGGCAGTCAATGGTCAGATATTGAAGAG
TTCTGCAATCGTAGCTGCGAGGTGCCAACAGGCTAAATCTGCATCCCTCAAACAGCCTTATATCACT
CAGAATTATTTCCAGTCGGTACTGTTGTGGAATATGAGTGCCGTCAGGTTACAGAAGAGAACCTTCT
CTATACCAAAAATAACTTGCCTTCAGAAATTTAAATGGTCCACAGCAGTCGAATTTGTAAAAAGAAA
TCATGCCCTAATCCGGGAGAAATACGAAATGGTCAGATTGATGTACCAGGTGGCATTATTTGGTGCA
ACCATCTCCTTCTCATGTAACACAGGGTACAAATATTTGGCTCGACTTCTAGTTTTGTCTTATTTCA
GGCAGCTCTGTCCAGTGGAGTGACCCGTTGCCAGAGTGCAGAGAAATTTATTGTCCAGCACCACCACAA
ATTGACAATGGAATAATTCAAGGGGAACGTGACCATTATGGATATAGACAGTCTGTAACGTATGCATGT
AATAAAGGATTCACCATGATTGGAGAGCACTCTATTTATTGTACTGTGAATAATGATGAAGGAGAGTGG
AGTGGCCACCACCTGAATGCAGAGGAAAATCTCTAACTTCCAAGTCCCACCAACAGTTCAGAAACCT
ACCACAGTAAATGTTCCAACACAGAAGTCTACCAACTCTCAGAAAACCACCACAAAACCACCACA
CCAAATGCTCAAGCAACACGGAGTACACCTGTTTCCAGGACAACCAAGCATTTTCATGAAACAACCCCA
AATAAAGGAAGTGAACCACTTCAGGTAACCCGCTTCTATCTGGTTCTCGTCTGTCAACCCAGGCT
GGTATGCGGTGGTGTGATCGTAGCTCACTGCAGTCTCGAACTCCTGGTTCAAGCGATCCTTCCACTTC
AGCCTCCCAAGTAGCTGGTACTACAGGTGTGTCCACGACACCCGGCTAAGTTTTTGAATTTATTTTT
TGTAGAGACAGGATTTTCTATGTTGCCAGGCTGTTTCAAACCTCTGGCCGTAAGCGATTTTTCCGG
CCTCCAAAACGTTGCGATTA
ACGCGTACGCGGCCGCTCGAG - GFP Tag - GTTTAAAC
```



[View online >](#)

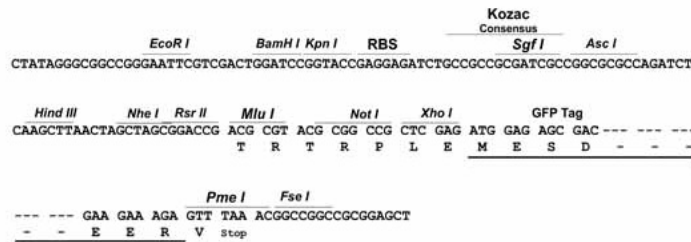
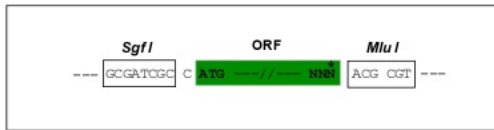
**Protein Sequence:** >Peptide sequence encoded by RG238266  
 Blue=ORF Red=Cloning site Green=Tag(s)

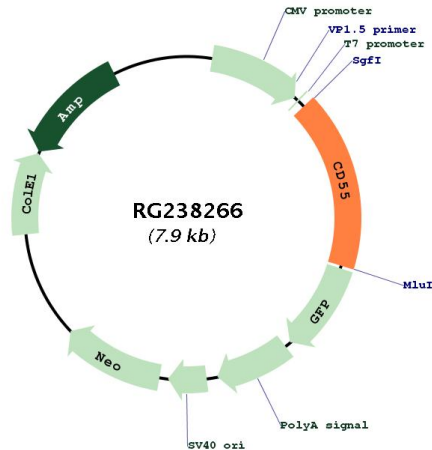
MTVARPSVPAALPLLGLPRLLLLVLCLPAVWGDCGLPPDPVNAQPALEGRTSFPEDTVITYKCEESF  
 VKIPGEKDSVICLKGSQWSDIEEFCNRSCEVPTRLNSASLKQPYITQNYFPVGTVVEYECRPGYRREPS  
 LSPKL TCLQNLKSTAVEFCCKKSCPNGEIRNGQIDVPGGILFGATISFSCNTGYKLFGSTSSFCLIS  
 GSSVQWSDPLPECREIYCPAPPQIDNGIIQGERDHYGYRQSVTYACNKGFMTIGEHSIYCTVNNDEGEW  
 SGPPPECRGKSLTSKVPPTVQKPTTVNVPTEVSPTSQKTTTKTTTPNAQATRSTPVSRTTKHFHETTP  
 NKGSGTTSGTTRLLSGSRPVTQAGMRWCDRSSLQSRTPGFKRSFHFSLPSSWYYRCVPRHPAKFLKFI  
 CRDRIFLCCPGWFQTPGRKRFRFPKTLRL  
**TR**TRPLEMESDESGLPAMEIECRITGTLNGVEFELVGGEGTPEQGRMTNKMSTKGALTFSPYLLSHV  
 MGYGFYHFGTYPSGYENPFLHAINNGGYNTRIEKYEDGGVLHVSFSYRYEAGRVIGDFKVMGTGFPED  
 SVIFTDKIIRSNATVEHLHPMGDNDLDGSFTRTFLRDGGYSSVVDSHMHFKSAIHPSILQNGGPMFA  
 FRRVEEDHSNTELGIVEYQHAFKTPDADAGEERV

**Restriction Sites:** SgfI-MluI

**Cloning Scheme:**

Cloning sites used for ORF Shutting:



**Plasmid Map:**


**ACCN:** NM\_001300902

**ORF Size:** 1332 bp

**OTI Disclaimer:** The molecular sequence of this clone aligns with the gene accession number as a point of reference only. However, individual transcript sequences of the same gene can differ through naturally occurring variations (e.g. polymorphisms), each with its own valid existence. This clone is substantially in agreement with the reference, but a complete review of all prevailing variants is recommended prior to use. [More info](#)

**OTI Annotation:** This clone was engineered to express the complete ORF with an expression tag. Expression varies depending on the nature of the gene.

**Components:** The ORF clone is ion-exchange column purified and shipped in a 2D barcoded Matrix tube containing 10ug of transfection-ready, dried plasmid DNA (reconstitute with 100 ul of water).

**RefSeq:** [NM\\_001300902.2](#)

**RefSeq Size:** 1784 bp

**RefSeq ORF:** 1335 bp

**Locus ID:** 1604

**Cytogenetics:** 1q32.2

**Protein Families:** Druggable Genome

**Protein Pathways:** Complement and coagulation cascades, Hematopoietic cell lineage, Viral myocarditis

**MW:** 49.8 kDa

**Gene Summary:**

This gene encodes a glycoprotein involved in the regulation of the complement cascade. Binding of the encoded protein to complement proteins accelerates their decay, thereby disrupting the cascade and preventing damage to host cells. Antigens present on this protein constitute the Cromer blood group system (CROM). Alternative splicing results in multiple transcript variants. The predominant transcript variant encodes a membrane-bound protein, but alternatively spliced transcripts may produce soluble proteins. [provided by RefSeq, Jul 2014]