

## Product datasheet for **RG238258**

### CDC2L6 (CDK19) (NM\_001300964) Human Tagged ORF Clone

#### Product data:

Product Type:	Expression Plasmids
Product Name:	CDC2L6 (CDK19) (NM_001300964) Human Tagged ORF Clone
Tag:	TurboGFP
Symbol:	CDK19
Synonyms:	bA346C16.3; CDC2L6; CDK11; DEE87; EIEE87
Mammalian Cell Selection:	Neomycin
Vector:	pCMV6-AC-GFP (PS100010)
E. coli Selection:	Ampicillin (100 ug/mL)
ORF Nucleotide Sequence:	>RG238258 representing NM_001300964. Blue=ORF Red=Cloning site Green=Tag(s)

```
GCTCGTTTGTAGTGAACCGTCAGAATTTGTAAACGACTCACTATAGGGCGCCGGGAATTCGTGACTG
GATCCGGTACCGAGGAGATCTGCCGCCGCGATCGCC
ATGTCCGGCTTGTAGAGAGATTGCACTTTTGCAGAAATGAAGCACCCATAATGTGATTGCATTGCAGAAAG
GTGTTCCCTTCTCACAGTGACAGGAAGGTATGGCTGCTGTTTATTATGCAGAGCATGACTTGTGGCAT
ATTATTAAGTTTACCGTGCATCAAAGCAAATAAAAAGCCCATGCAGTTGCCAAGATCTATGGTTAAA
TCCTTACTTTACCAGATTCTTGATGGTATCCATTACCTCCATGCAAATGGGTGCTTACAGAGACTTG
AAACCAGCAAATATCCTAGTAATGGGAGAAGGTCTGAGAGGGGAGAGTCAAAATAGCTGACATGGGT
TTTGCCAGATTATCAATTCTCCTCTAAAGCCACTAGCAGATTTGGATCCAGTAGTTGTGACATTTTGG
TATCGGGCTCCAGAACTTTGCTTGGTGAAGGCATTATACAAAGGCCATTGATATATGGCAATAGGT
TGTATATTTGCTGAATTGTTGACTTCGGAACCTATTTTTCACTGTGTCAGGAAGATATAAAAACAAGC
AATCCCTTTATCATGATCAACTGGATCGGATATTTAGTGTCTAGGGTTTCTGCGAGATAAAGACTGG
GAAGATATTAGAAAGATGCCAGAATATCCACACTTCAAAAAGACTTTAGAAGAACAACGTATGCCAAC
AGTAGCCTCATAAAGTACATGGAGAAACACAAGGTCAAGCCTGACAGCAAAGTGTTCCTCTTGCTTCCAG
AACTCCTGACCATGGATCCAACCAAGAGAATTACCTCGGAGCAAGCTCTGCAGGATCCCTATTTTCCAG
GAGGACCTTTGCCAACATTAGATGTATTTGCCGGCTGCCAGATTCATACCCCAAACGAGAATTCCTT
AATGAAGATGATCCTGAAGAAAAGGTGACAAGAATCAGCAACAGCAGCAGAAACAGCATCAGCAGCCC
ACAGCCCCTCCACAGCAGGCAGCAGCCCTCCACAGGCGCCCCACCACAGCAGAACAGCACCCAGACC
AACGGGACCGCAGGTGGGGCTGGGGCCGGGTCCGGGGCACCGGAGCAGGGTTGCAGCACAGCCAGGAC
TCCAGCCTGAACCAGGTGCCTCCAAACAAGAAGCCACGGCTAGGGCCTTCCAGCGCAAACCTCAGGTGGA
CCTGTGATGCCCTCGGATTATCAGCACTCCAGTTCTCGCCTGAATTACCAAAGCAGCGTTCCAGGGATCC
TCTCAGTCCCAGAGCACACTTGGCTACTTCTCCTCGTCTCAGCAGAGCTCACAGTACCACCCATCTCAC
CAGGCCACCGGTAC
ACGCGTACGCGGCCGCTCGAG - GFP Tag - GTTTAAAC
```



[View online >](#)

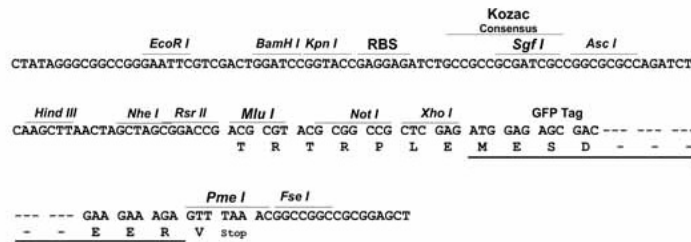
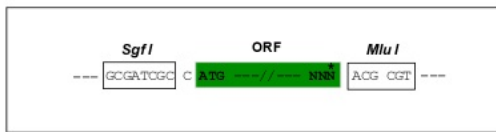
**Protein Sequence:** >Peptide sequence encoded by RG238258  
 Blue=ORF Red=Cloning site Green=Tag(s)

MSACREIALLRELKHPNVIALQKVFLSHSDRKVWLLFDYAEHDLWHIIKFRASKANKKPMQLPRSMVK  
 SLLYQILDGIHYLHANWVLRDLKPANILVMGEGPERGRVKIADMGFARLFNSPLKPLADLDPVVVTFW  
 YRAPELLLGARHYTKAIDIWAIGCIFAELLTSEPIFHCQEDIKTSNPFHHDQLDRIFSVMGFPADKDW  
 EDIRKMPPEYPTLQKDFRRTTYANSSLIKMEKHKVKPDSKVFLLLQKLLTMDPTKRITSEQALQDPYFQ  
 EDPLPTLDVFAQCQIPYPKREFLNEDDPEEKGDKNQQQQNHQOPTAPPQAAAAPPQAPPQONSTQT  
 NGTAGGAGAGVGGTGAGLQHSQDSSLNQVPPNKKPRLGPSGANSGGPVMPSDYQHSSSLNYQSSVQGS  
 SQQSTLGYSSSSQSSQYHPSHQAHRY  
**TRTRPLEMESDESGLPAMEIECRITGTLNGVEFELVGGEGTPEQGRMTNKMSTKGALTFSPYLLSHV**  
 MGYGFYHFGTYPSGYENPFLHAINNGGYNTRIEKYEDGGVLHVSFSYRYEAGRVIGDFKVMGTGFPED  
 SVIFTDKIIRSNATVEHLHPMGDNDLDGSFTRTFSLRDGGYSSVVDSHMHFKSAIHPSILQNGGPMFA  
 FRRVEEDHSNTELGIVEYQHAFKTPDADAGEERV

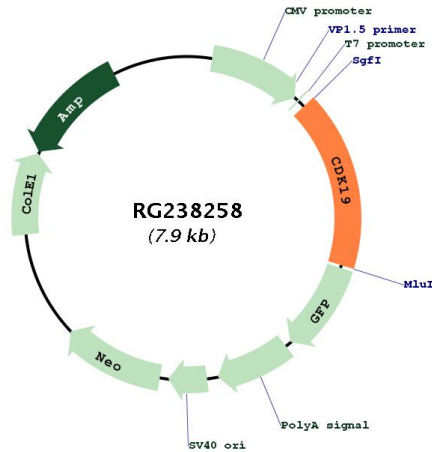
**Restriction Sites:** SgfI-MluI

**Cloning Scheme:**

Cloning sites used for ORF Shutting:



Plasmid Map:



ACCN: NM\_001300964

ORF Size: 1326 bp

OTI Disclaimer: The molecular sequence of this clone aligns with the gene accession number as a point of reference only. However, individual transcript sequences of the same gene can differ through naturally occurring variations (e.g. polymorphisms), each with its own valid existence. This clone is substantially in agreement with the reference, but a complete review of all prevailing variants is recommended prior to use. [More info](#)

OTI Annotation: This clone was engineered to express the complete ORF with an expression tag. Expression varies depending on the nature of the gene.

Components: The ORF clone is ion-exchange column purified and shipped in a 2D barcoded Matrix tube containing 10ug of transfection-ready, dried plasmid DNA (reconstitute with 100 ul of water).

RefSeq: [NM\\_001300964.2](#)

RefSeq Size: 6016 bp

RefSeq ORF: 1329 bp

Locus ID: 23097

UniProt ID: [Q9BWU1](#)

Cytogenetics: 6q21

Protein Families: Druggable Genome, Protein Kinase

MW: 50.3 kDa

**Gene Summary:**

This gene encodes a protein that is one of the components of the Mediator co-activator complex. The Mediator complex is a multi-protein complex required for transcriptional activation by DNA binding transcription factors of genes transcribed by RNA polymerase II. The protein encoded by this gene is similar to cyclin-dependent kinase 8 which can also be a component of the Mediator complex. Alternative splicing results in multiple transcript variants encoding distinct isoforms. [provided by RefSeq, Jul 2014]