

Product datasheet for **RG238257**

CDC2L6 (CDK19) (NM_001300963) Human Tagged ORF Clone

Product data:

| | |
|---------------------------|--|
| Product Type: | Expression Plasmids |
| Product Name: | CDC2L6 (CDK19) (NM_001300963) Human Tagged ORF Clone |
| Tag: | TurboGFP |
| Symbol: | CDK19 |
| Synonyms: | bA346C16.3; CDC2L6; CDK11; DEE87; EIEE87 |
| Mammalian Cell Selection: | Neomycin |
| Vector: | pCMV6-AC-GFP (PS100010) |
| E. coli Selection: | Ampicillin (100 ug/mL) |
| ORF Nucleotide Sequence: | >RG238257 representing NM_001300963. Blue=ORF Red=Cloning site Green=Tag(s) |

```
GCTCGTTTGTAGTGAACCGTCAGAATTTTGTAAACGACTACTATAGGGCGCCGGGAATTCGTGACTG
GATCCGGTACCGAGGAGATCTGCCGCCGCGATCGCC
ATGTCCGGCTTGTAGAGAGATTGCACTTTTGCAGAAATGAAGCACCCATAATGTGATTGCATTGCAGAAAG
GTGTTCTTTCTCACAGTGACAGGAAGGTATGGCTGCTGTTTATTATGCAGAGCATGACTTGTGGCAT
ATTATTAAGTTTACCGTGCATCAAAGCAAATAAAAAGCCCATGCAGTTGCCAAGATCTATGGTTAAA
TCCTTACTTTACCAGATTCTTGATGGTATCCATTACCTCCATGCAAATGGGTGCTTACAGAGACTTG
AAACCAGCAAATATCCTAGTAATGGGAGAAGGTCTGAGAGGGGAGAGTCAAAATAGCTGACATGGGT
TTTGCCAGATTATCAATTCTCCTCTAAAGCCACTAGCAGATTTGGATCCAGTAGTTGTGACATTTTGG
TATCGGGCTCCAGAACTTTGCTTGGTGAAGGCATTATACAAAGGCCATTGATATATGGCAATAGGT
TGTATATTTGCTGAATTGTTGACTTCGGAACCTATTTTTCACTGTGTCAGGAAGATATAAAAACAAGC
AATCCCTTTCATCATGATCAACTGGATCGGATATTTAGTGTCATGGGGTTTCTGCAGATAAAGACTGG
GAAGATATTAGAAAGATGCCAGAATATCCACACTTCAAAAAGACTTTAGAAGAACAACGTATGCCAAC
AGTAGCCTCATAAAGTACATGGAGAAACACAAGGTCAAGCCTGACAGCAAAGTGTTCCTCTTGCTTCCAG
AACTCCTGACCATGGATCCAACCAAGAGAATTACCTCGGAGCAAGCTCTGCAGGATCCCTATTTTCAG
GAGGACCTTTGCCAACATTAGATGATTTGCGGGCTGCCAGATTCATACCCCAAACGAGAATTCCTT
AATGAAGATGATCCTGAAGAAAAGGTGACAAGAATCAGCAACAGCAGCAGAACCAGCATCAGCAGCCC
ACAGCCCCTCCACAGCAGGCAGCAGCCCTCCACAGGCGCCCCACCACAGCAGAACAGCACCCAGACC
AACGGGACCGCAGGTGGGGCTGGGGCCGGGTGCGGGGACCGGAGCAGGGTTGCAGCACAGCCAGGAC
TCCAGCCTGAACCAGGTGCCTCCAAACAAGAAGCCACGGCTAGGGCCTTCAGGCGCAAACCTCAGGTGGA
CCTGTGATGCCCTCGGATTATCAGCACTCCAGTTCTCGCCTGAATTACCAAAGCAGCGTTTCAGGGATCC
TCTCAGTCCCAGAGCACACTTGGCTACTTCTCCTCGTCTCAGCAGAGCTCACAGTACCACCCATCTCAC
CAGGCCACCGGTAC
ACGCGTACGCGGCCGCTCGAG - GFP Tag - GTTTAAAC
```



[View online >](#)

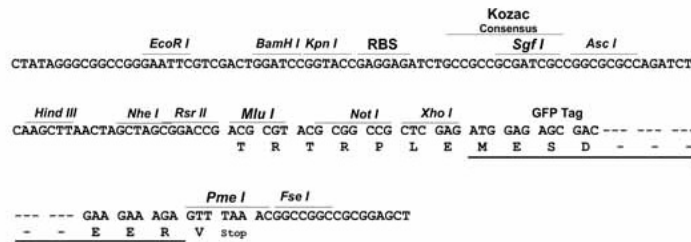
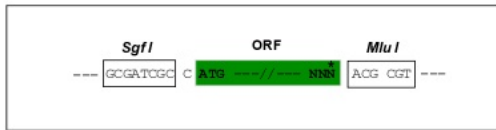
Protein Sequence: >Peptide sequence encoded by RG238257
 Blue=ORF Red=Cloning site Green=Tag(s)

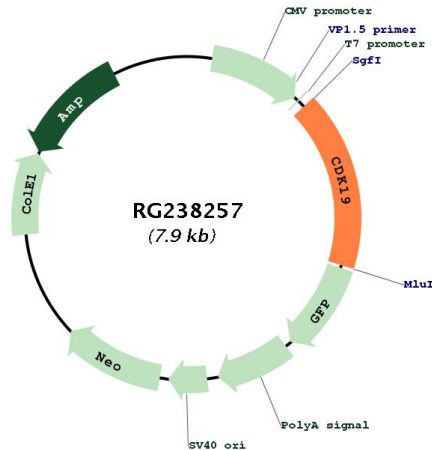
MSACREIALLRELKHPNVIALQKVFLSHSDRKVWLLFDYAEHDLWHIIKFRASKANKKPMQLPRSMVK
 SLLYQILDGIHYLHANWVLRDLKPANILVMGEGPERGRVKIADMGFARLFNSPLKPLADLDPVVVTFW
 YRAPELLLGARHYTKAIDIWAIGCIFAELLTSEPIFHCRQEDIKTSNPFHHDQLDRIFSVMGFPADKDW
 EDIRKMPPEYPTLQKDFRRTTYANSSLIKMEKHKVKPDSKVFLLLQKLLTMDPTKRITSEQALQDPYFQ
 EDPLPTLDVFAQCQIPYPKREFLNEDDPEEKGDKNQQQQNHQOPTAPPQAAAAPPQAPPQONSTQT
 NGTAGGAGAGVGGTGAGLQHSQDSSLNQVPPNKKPRLGPSGANSGGPVMPSDYQHSSSLNYQSSVQGS
 SQQSTLGYSSSSQSSQYHPSHQAHRY
TRTRPLEMESDESGLPAMEIECRITGTLNGVEFELVGGEGTPEQGRMTNKMSTKGALTFSPYLLSHV
 MGYGFYHFGTYPSGYENPFLHAINNGGYNTRIEKYEDGGVLHVSFSYRYEAGRVIGDFKVMGTGFPED
 SVIFTDKIIRSNATVEHLHPMGDNDLDGSFTRTFSLRDGGYSSVVDSHMHFKSAIHPSILQNGGPMFA
 FRRVEEDHSNTELGIVEYQHAFKTPDADAGEERV

Restriction Sites: SgfI-MluI

Cloning Scheme:

Cloning sites used for ORF Shutting:



Plasmid Map:


ACCN: NM_001300963

ORF Size: 1326 bp

OTI Disclaimer: The molecular sequence of this clone aligns with the gene accession number as a point of reference only. However, individual transcript sequences of the same gene can differ through naturally occurring variations (e.g. polymorphisms), each with its own valid existence. This clone is substantially in agreement with the reference, but a complete review of all prevailing variants is recommended prior to use. [More info](#)

OTI Annotation: This clone was engineered to express the complete ORF with an expression tag. Expression varies depending on the nature of the gene.

Components: The ORF clone is ion-exchange column purified and shipped in a 2D barcoded Matrix tube containing 10ug of transfection-ready, dried plasmid DNA (reconstitute with 100 ul of water).

RefSeq: [NM_001300963.1](#), [NP_001287892.1](#)

RefSeq Size: 6062 bp

RefSeq ORF: 1329 bp

Locus ID: 23097

UniProt ID: [Q9BWU1](#)

Cytogenetics: 6q21

Protein Families: Druggable Genome, Protein Kinase

MW: 50.3 kDa

Gene Summary:

This gene encodes a protein that is one of the components of the Mediator co-activator complex. The Mediator complex is a multi-protein complex required for transcriptional activation by DNA binding transcription factors of genes transcribed by RNA polymerase II. The protein encoded by this gene is similar to cyclin-dependent kinase 8 which can also be a component of the Mediator complex. Alternative splicing results in multiple transcript variants encoding distinct isoforms. [provided by RefSeq, Jul 2014]