

## Product datasheet for **RG238255**

### SHF (NM\_001301168) Human Tagged ORF Clone

#### Product data:

|                           |  |
|---------------------------|--|
| Product Type:             | Expression Plasmids  |
| Product Name:             | SHF (NM_001301168) Human Tagged ORF Clone                                      |
| Tag:                      | TurboGFP   |
| Symbol:                   | SHF  |
| Mammalian Cell Selection: | Neomycin   |
| Vector:                   | pCMV6-AC-GFP (PS100010)  |
| E. coli Selection:        | Ampicillin (100 ug/mL)   |
| ORF Nucleotide Sequence:  | >RG238255 representing NM_001301168.<br>Blue=ORF Red=Cloning site Green=Tag(s) |

```
GCTCGTTTAGTGAACCGTCAGAATTTTGTAAACGACTCACTATAGGGCGGCCGGGAATTCGTCGACTG
GATCCGGTACCGAGGAGATCTGCCGCCGCGATCGCC
ATGTTACTGAGCGGAGCTCCTCCGGCTGGCTCCCGCCCGGGGCCGGAACGCAGGGGAGCGCTGGGGGC
GGCCCGGGGGGTCCCGCCGGGGCGCCGGGGTGCGGGAGCCGGCCAGGAGGGGGCGGCAGCGCGGA
GTAGCCAAGTGGCTCCGGGAGCACTGGGCTTCCGCGGGGGGGCGGGCGGAGGGGGCAGCAAGCCG
GCGCCCCCGAGCCGACTACCGCCCCCTGCGCCCTCCTCGGCCGCGCCCCCGCGCCGCCCGCCCGGAC
ATCCTGGCCGCTACAGGCTGCAGCGGGAGCGGACTTGAAGACCCCTACTCCGGGGGTGTCGCGGC
TCCGCGCCCTCGCCACCCCTGTCGCCCCGGACCCACGCGCCCCCGGCCACGGCTCTCCCCACAC
CGCCTTATTCGGGTCGAGACCCCGGGGCCCGGCGCCGCTGCTGATGAGCGGATCTCCGACCCCGC
GCCAGCAGCGATAGGCTAGCTATCCTAGAAGACTATGCGGACCCGTTTGATGTTTCAGGAGACTGGCGAA
GGCTCAGCAGGAGCTTCAGGAGCCCGAGAGAAGGTCCCTGAAAATGATGGCTACATGGAGCCCTATGAG
GCTCAAAGATGATGGCCGAGATCCGGGCTCCAAGGAGACAGCAACTCAGCCCTTGCTCTGTATGAC
ACACCCTATGAGCCAGAGGAGGATGGGGCCACCCCGAAGGTGAGGGGGCCCCCTGGCCCCGGGAGTCC
CGCCTGCCAGAGGATGATGAGAGCCCCCTGAGGAGTATGACCAGCCCTGGGAGTGAAGAAGGAGCGG
ATTTCAAAGCCTTTCAGCCCAGTTTGAAGACCGGAGAAGAGCTGCCTGTACCTGGCCGGGAGGAG
AAGGGGGCGGTACCTCCCGACTCTCTGCAGGGAACCCCAAGTCAGCAAACCCCTAAGCATGGAGCCC
AGCAGCCCCCTGGGGAGTGGACAGATCCAGCACTGCCTCTGGAAAACAGGTCTGGTATCACGGGGCC
ATCAGCCGAACCGACGCCGAGAACCTGTCCGGCTGTGCAAAGAGGCCAGCTACCTGGTGCGAACAGT
GAGACCAGCAAGAATGACTTCTCCCTCTCCCTCAAGAGCAGCCAGGGATTCATGCACATGAAGCTGTCC
CGAACCAAGGAACACAAATATGTGCTGGGCCAGAACAGCCCGCCCTTACAGCAGGTCCCTGAAATTTG
CACCATATGCCAGCCGCAAGCTACCCATTAAGGGAGCCGAACACATGTCCCTGTCTACCTGTGGCC
ATCCGGACTCTT
ACGCGTACGCGGCCGCTCGAG - GFP Tag - GTTTAAAC
```



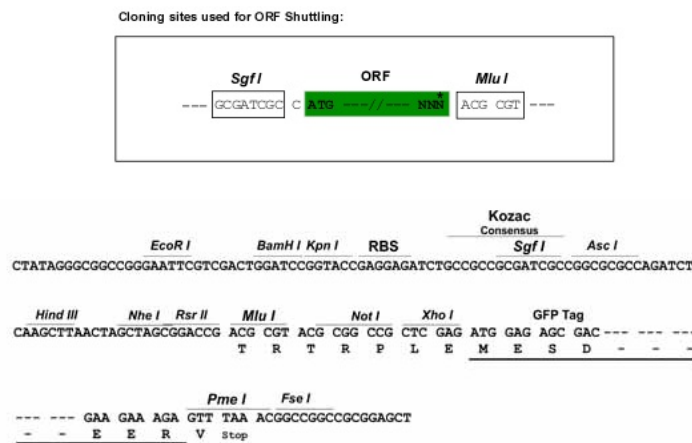
View online »

**Protein Sequence:** >Peptide sequence encoded by RG238255  
 Blue=ORF Red=Cloning site Green=Tag(s)

MLLSGAPPAGSRPGPRTQGSAGGGPGGSRRGAGGAGAGPGGGGSGGVAKWLREHLGFRGGGGGGGSKP  
 APPEPDYRPPAPSPAAPPAPPPDILAAYRLQRERDFEDPYSGGSSGAALATPVAPGTPPPRHGSPPH  
 RLIRVETPGPPAPPADERISGPPASSDRLAILEDYADPFVQETGEGSAGASGAPEKVPENDGYMEPYE  
 AQKMAEIRGSKETATQPLPLYDTPEPEEDGATPEGEGAPWPRESRLPEDDERPPEEYDQPWEWKKER  
 ISKAFAAQFEGEKSCLSPGREEKGRLLPRLSAGNPKSAKPLSMEPSSPLGEWTDPALPLENQVWYHGA  
 ISRTDAENLLRLCKEASYLVRNSETSKNDFSLSLKSSQGFMMKLSRTKEHKYVLGQNSPPFSSVPEIV  
 HHYASRKLPIKGAEHMSLLYPVAIRTL  
 TRTRPLEMESDESGLPAMEIECRITGTLNGVEFELVGGEGTPEQGRMTNKMSTKGALTFSPYLLSHV  
 MGYGFYHFGTYPSTYENPFLHAINNGGYNTRIEKYEDGGVLHVSFSYRYEAGRVIGDFKVMGTGFPED  
 SVIFTDKIIRSNATVEHLHPMGDNDLDGSFTRTFLRDGGYSSVVDSHMHFKSAIHPSILQNGGPMFA  
 FRRVEEDHSNTELGIVEYQHAFKTPDADAGEERV

**Restriction Sites:** SgfI-MluI

**Cloning Scheme:**



**ACCN:** NM\_001301168

**ORF Size:** 1323 bp

**OTI Disclaimer:** The molecular sequence of this clone aligns with the gene accession number as a point of reference only. However, individual transcript sequences of the same gene can differ through naturally occurring variations (e.g. polymorphisms), each with its own valid existence. This clone is substantially in agreement with the reference, but a complete review of all prevailing variants is recommended prior to use. [More info](#)

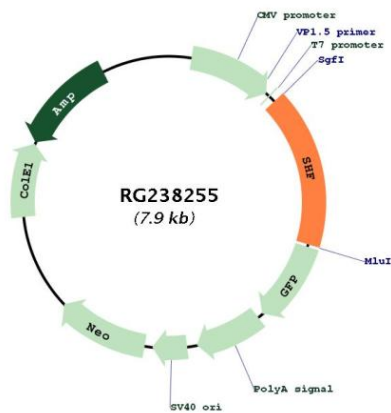
**OTI Annotation:** This clone was engineered to express the complete ORF with an expression tag. Expression varies depending on the nature of the gene.

**Components:** The ORF clone is ion-exchange column purified and shipped in a 2D barcoded Matrix tube containing 10ug of transfection-ready, dried plasmid DNA (reconstitute with 100 ul of water).

**RefSeq:** [NM\\_001301168.1](#), [NP\\_001288097.1](#)

RefSeq Size: 2092 bp  
 RefSeq ORF: 1326 bp  
 Locus ID: 90525  
 Cytogenetics: 15q21.1  
 MW: 47.2 kDa

**Product images:**



Circular map for RG238255