

Product datasheet for **RG238250**

PXK (NM_001289101) Human Tagged ORF Clone

Product data:

Product Type:	Expression Plasmids
Product Name:	PXK (NM_001289101) Human Tagged ORF Clone
Tag:	TurboGFP
Symbol:	PXK
Synonyms:	MONAKA; SLOB
Mammalian Cell Selection:	Neomycin
Vector:	pCMV6-AC-GFP (PS100010)
E. coli Selection:	Ampicillin (100 ug/mL)
ORF Nucleotide Sequence:	>RG238250 representing NM_001289101. Blue=ORF Red=Cloning site Green=Tag(s)

```
GCTCGTTTGTAGTGAACCGTCAGAATTTTGTAAACGACTCACTATAGGGCGCCGGGAATTCGTCGACTG
GATCCGGTACCGAGGAGATCTGCCGCCGCGATCGCC
ATGTTCTTCCGATCAGAACCAAAGTGGGAGGTGGTGGAACTTTGAAAGACATAGGTTGGAGAATAAGG
AAGAAATATTTCTTGATGAAGATTAATAATCAGCCAAAGGAACGGCTAGTGTTAAGCTGGGCTGACCTT
GGCCAGACAAGTATTTGTCAGATAAAGATTTTCAGTGTCTAATCAAACCTCTGCCTTCTGTTTGCAC
CCTTACATCTATCGGGTTACCTTTGCCACAGCTAATGAATCCTCAGCGTTGCTAATTAGGATGTTTAAAC
GAAAAGGGAACATTGAAGGATCTGATCTACAAGGCAAAACAAAAGACCCATTTCTAAAGAAGTACTGC
AACCTAAGAAGATTCAGGGCCTGGAACCCAGCAAATAAAAACATATGGACGGCAAATATTAGAGGTA
CTGAAGTTTCTTCATGACAAGGGATTCCCTTATGGGCATCTTACGCCTCCAATGTGATGCTCGATGGG
GACACTTGCCGGCTGCTGGACCTTGAGAATTCCTTATTGGGCCTGCCTTCCTTCTACCGATCTTATTTT
TCACAATTCAGGAAAATCAATACATTGGAAAGTGTGGATGTCCACTGCTTTGGCCACTTACTGTATGAA
ATGACTTATGGACGACCGCCAGACTCGGTGCCTGTGGACTCCTTCCCTCCTGCCCGTCCATGGCTGTG
GTGGCCGTGTTGGAGTCTACGCTGTCTTGTGAAGCCTGTAAAAATGGCATGCCTACCATCTCCCGGCTC
TTACAGATGCCATTATTCAGCGATGTTTACTAACCCTTCTGAAAAACACAGTTTAAAGATCCCTACA
AAGTTAAAAGAGGCATTGAGAATTGCCAAAGAATGTATAGAGAAGAGACTAATTGAGGAACAGAAACAG
ATTCACCAGCATCGAAGACTGACAAGAGCTCAGTCCCACCATGGATCTGAGGAGGAAAGAAAAAAGA
AAGATTTTAGCTCGAAAGAAGTCAAACGATCTGCTCTTGAAAAATAGTGAAGAGCATTACGCGAAGTAC
AGCAAACCTCAATATTCAGCAGGATCTGGGGCCAGCTCACCTCTCACGTCCCGTCATCGCCAACCTCCA
CCCTCTACATCAGGGATATCTGCATTACCTCCACCTCCTCCACCTCCACCACCACCAGCAGCTCCCTTG
CCTCCTGCGAGCACCGAGGCACCTGCCAGCTCTCGTCTCAGGCTGTGAATGGCATGAGCCGAGGGGCC
TTGCTCAGCTCCATCCAGAATTTCCAAAAGGAACTTTGAGGAAAGCCAAAACCTGTGATCACAGTGCT
CCGAAGATCGGC
ACGCGTACGCGGCCGCTCGAG - GFP Tag - GTTAAAC
```



[View online >](#)

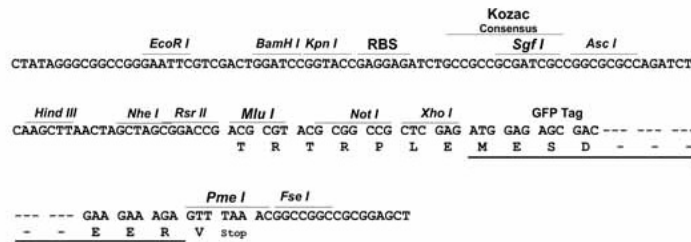
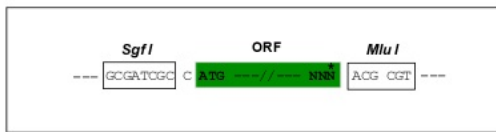
Protein Sequence: >Peptide sequence encoded by RG238250
 Blue=ORF Red=Cloning site Green=Tag(s)

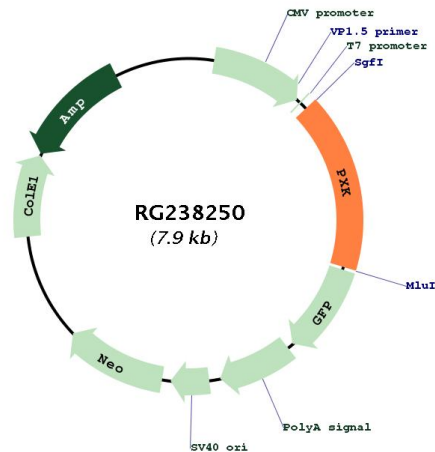
MFFRSEPKWEVVEPLKDIGWRIRKKYFLMKIKNQKERLVL SWADL GPKYL SDKDFQCLIKLLPSC LH
 PYIYRVTFATANESSALLIRMFNEKGLKDLIYKAKPKDPFLK KYNPKIQGLELQQIKTYGRQILEV
 LKFLHDKFPYGH LHASNVMLDGDTCRLLDLENSLLGLPSFYRSYFSQFRKINTLESVDVHCFGHLLYE
 MTYGRPPDSVPVDSFPPAPSMVAVLESTL SCEACKNGMPTISRLLQMP LFSVLLTTSEKPQFKIPT
 KLKEALRIAKECEKRLIEEQKQIHQHRRLTRAQSHHGSEERKRRKILARKKSKRSALENSEEHS AKY
 SNSNNSAGSGASSPLTSPSSPTPPSTSGISALPPPPPPPPPAAPLPASTEAPAQLSSQAVNGMSRGA
 LLSSIQNFQKGLTRKAKTCDHSAPKIG
 TRTRPLEMESDESGLPAMEIECRITGTLNGVEFELVGGGEGTPEQGRMTNKMKSTKGALTFSPYLLSHV
 MGYGFYHFGTYPSGYENPFLHAINNGGYNTRIEKYEDGGVLHVSFSYRYEAGRVIGDFKVMGTGFPED
 SVIFTDKIIRSNATVEHLHPMGDNDLDGSFTRTFLRDGGYSSVVD SHMHFKSAIHPSILQNGGPMFA
 FRRVEEDHSNTELGIVEYQHAFKTPDADAGEERV

Restriction Sites: SgfI-MluI

Cloning Scheme:

Cloning sites used for ORF Shutting:



Plasmid Map:


ACCN: NM_001289101

ORF Size: 1323 bp

OTI Disclaimer: The molecular sequence of this clone aligns with the gene accession number as a point of reference only. However, individual transcript sequences of the same gene can differ through naturally occurring variations (e.g. polymorphisms), each with its own valid existence. This clone is substantially in agreement with the reference, but a complete review of all prevailing variants is recommended prior to use. [More info](#)

OTI Annotation: This clone was engineered to express the complete ORF with an expression tag. Expression varies depending on the nature of the gene.

Components: The ORF clone is ion-exchange column purified and shipped in a 2D barcoded Matrix tube containing 10ug of transfection-ready, dried plasmid DNA (reconstitute with 100 ul of water).

RefSeq: [NM_001289101.1](#), [NP_001276030.1](#)

RefSeq Size: 2734 bp

RefSeq ORF: 1326 bp

Locus ID: 54899

UniProt ID: [Q7Z7A4](#)

Cytogenetics: 3p14.3

Protein Families: Druggable Genome, Protein Kinase

MW: 49.9 kDa

Gene Summary:

This gene encodes a phox (PX) domain-containing protein which may be involved in synaptic transmission and the ligand-induced internalization and degradation of epidermal growth factors. Variations in this gene may be associated with susceptibility to systemic lupus erythematosus (SLE). Alternative splicing results in multiple transcript variants. [provided by RefSeq, Jan 2014]