

Product datasheet for **RG238239**

CD55 (NM_001300903) Human Tagged ORF Clone

Product data:

Product Type:	Expression Plasmids
Product Name:	CD55 (NM_001300903) Human Tagged ORF Clone
Tag:	TurboGFP
Symbol:	CD55
Synonyms:	CHAPLE; CR; CROM; DAF; TC
Mammalian Cell Selection:	Neomycin
Vector:	pCMV6-AC-GFP (PS100010)
E. coli Selection:	Ampicillin (100 ug/mL)
ORF Nucleotide Sequence:	>RG238239 representing NM_001300903. Blue=ORF Red=Cloning site Green=Tag(s)

```
GCTCGTTTGTAGTAACCGTCAGAATTTTGTAAACGACTCACTATAGGGCGCCGGGAATTCGTGACTG
GATCCGGTACCGAGGAGATCTGCCGCCGCGATCGCC
ATGACCGTCGCGCGGCCGAGCGTGCCCGCGCGCTGCCCTCCTCGGGGAGCTGCCCGGCTGCTGCTG
CTGGTGTGTTGTGCCTGCCGGCGTGTGGGTGACTGTGGCCTTCCCCAGATGTACCTAATGCCAG
CCAGCTTTGGAAGGCCGTACAAGTTTTCCCGAGGATACTGAATAACGTACAAATGTGAAGAAAGCTTT
GTGAAAATTCCTGGCAGAAAGGACTCAGTGATCTGCCTAAGGGCAGTCAATGGTCAGATATTGAAGAG
TTCTGCAATCGTAGCTGCGAGGTGCCAACAAAGGCTAAATCTGCATCCCTCAAACAGCCTTATATCACT
CAGAATTATTTCCAGTCGGTACTGTTGTGGAATATGAGTGCCGTCAGGTTACAGAAGAGAACCTTCT
CTATACCAAAAATAACTTGCCTTCAGAAATTTAAATGGTCCACAGCAGTCAATTTTGTAAAAAGAAA
TCATGCCCTAATCCGGGAGAAATACGAAATGGTCAGATTGATGTACCAGGTGGCATTATTTGGTGCA
ACCATCTCCTTCTCATGTAACACAGGGTACAAATTTTGGCTCGACTTCTAGTTTTTGTCTTATTTCA
GGCAGCTCTGTCCAGTGGAGTGACCCGTTGCCAGAGTGCAGAGAAATTTATTGTCCAGCACCACCACAA
ATTGACAATGGAATAATCAAGGGGAACGTGACCATTATGGATATAGACAGTCTGTAACGTATGCATGT
AATAAAGGATTCACCATGATTGGAGAGCACTCTATTTATTGTACTGTGAATAATGATGAAGGAGAGTGG
AGTGGCCACCACCTGAATGCAGAGGAAAATCTCTAACTTCCAAGTCCCACCAACAGTTTCAGAAACCT
ACCACAGTAAATGTTCCAACACAGAAGTCTACCAACTTCTCAGAAAACCACCACAAAACCACCACA
CCAAATGCTCAAGCAACACGGAGTACACCTGTTTCCAGGACAACCAAGCATTTTTCATGAAACAACCCCA
AATAAAGGAAGTGAACCACTTCAGGTAACCCGCTTCTATCTGAGACGGTGTTCACCGTGTATC
CAGGATGGTCTTGATCTCCTGGCCTCGAGATCTGCCTGCCTCGGCCTCCCAAAGTCTGGGATTACAGG
CGTGAGCCACCGCACCTGGCCAGGGCACACGTGTTTACGTTGACAGGTTTGCTTGGGACGCTAGTAAC
CATGGGCTTGCTGACTTAGCCAAAGAAGAGTTAAGAAGAAAATACACACAAGTATACAGACTGTTCTTA
GTTTCT
ACGCGTACGCGGCCGCTCGAG - GFP Tag - GTTTAAAC
```



[View online >](#)

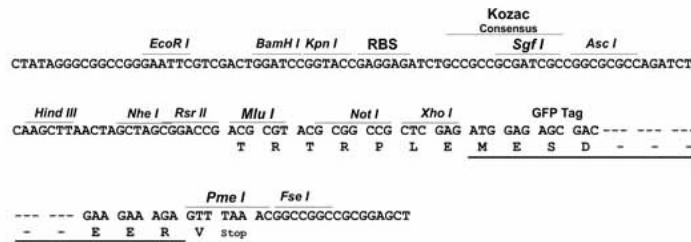
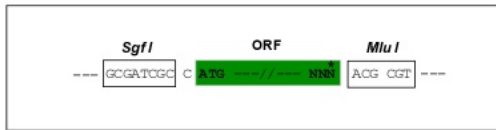
Protein Sequence: >Peptide sequence encoded by RG238239
 Blue=ORF Red=Cloning site Green=Tag(s)

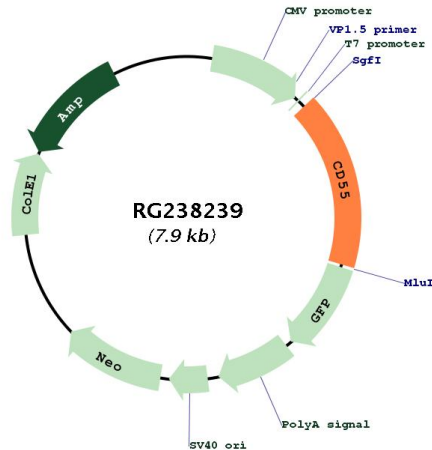
MTVARPSVPAALPLLGLPRLLLLVLCLPAVWGDCGLPPDPVNAQPALEGRTSFPEDTVITYKCEESF
 VKIPGEKDSVICLKGSQWSDIEEFCNRSCVPTRLNSASLKQPYITQNYFPVGTVVEYECRPGYRREPS
 LSPKL TCLQNLK WSTAVEFC KKKSCPNPGEIRNGQIDVPGGILFGATISFSCNTGYKLFGSTSSFCLIS
 GSSVQWSDPLPECREIYCPAPPQIDNGIIQGERDHYGYRQSVTYACNKGFTMIGEHSIYCTVNNDEGEW
 SGPPPECRGKSLTSKVPPTVQKPTTVNVPTTEVSPTSQKTTTKTTTPNAQATRSTPVSRTTKHFHETTP
 NKGSGTTSGTTRLLSETVFHRVIQDGLDLLASRSACLGLPKCWDYRREPPHLARAHVHVDFRFAWDASN
 HGLADLAKEELRRKYTQVYRFLVLS
TRTRPLEMESDESGLPAMEIECRITGTLNGVEFELVGGEGTPEQGRMTNKMSTKGALTFSPYLLSHV
 MGYGFYHFGTYPSGYENPFLHAINNGGYNTRIEKYEDGGVLHVSFSYRYEAGRVIGDFKVMGTGFPED
 SVIFTDKIIRSNATVEHLHPMGDNDLDGSFTRTFLRDGGYSSVVD SHMHFKSAIHPSILQNGGPMFA
 FRRVEEDHSNTELGIVEYQHAFKTPDADAGEERV

Restriction Sites: SgfI-MluI

Cloning Scheme:

Cloning sites used for ORF Shutting:



Plasmid Map:


ACCN: NM_001300903

ORF Size: 1317 bp

OTI Disclaimer: The molecular sequence of this clone aligns with the gene accession number as a point of reference only. However, individual transcript sequences of the same gene can differ through naturally occurring variations (e.g. polymorphisms), each with its own valid existence. This clone is substantially in agreement with the reference, but a complete review of all prevailing variants is recommended prior to use. [More info](#)

OTI Annotation: This clone was engineered to express the complete ORF with an expression tag. Expression varies depending on the nature of the gene.

Components: The ORF clone is ion-exchange column purified and shipped in a 2D barcoded Matrix tube containing 10ug of transfection-ready, dried plasmid DNA (reconstitute with 100 ul of water).

RefSeq: [NM_001300903.2](#)

RefSeq Size: 2911 bp

RefSeq ORF: 1320 bp

Locus ID: 1604

UniProt ID: [P08174](#)

Cytogenetics: 1q32.2

Protein Families: Druggable Genome

Protein Pathways: Complement and coagulation cascades, Hematopoietic cell lineage, Viral myocarditis

MW: 49 kDa

Gene Summary:

This gene encodes a glycoprotein involved in the regulation of the complement cascade. Binding of the encoded protein to complement proteins accelerates their decay, thereby disrupting the cascade and preventing damage to host cells. Antigens present on this protein constitute the Cromer blood group system (CROM). Alternative splicing results in multiple transcript variants. The predominant transcript variant encodes a membrane-bound protein, but alternatively spliced transcripts may produce soluble proteins. [provided by RefSeq, Jul 2014]