

Product datasheet for **RG238211**

FAM222B (NM_001288636) Human Tagged ORF Clone

Product data:

Product Type:	Expression Plasmids
Product Name:	FAM222B (NM_001288636) Human Tagged ORF Clone
Tag:	TurboGFP
Symbol:	FAM222B
Synonyms:	C17orf63
Mammalian Cell Selection:	Neomycin
Vector:	pCMV6-AC-GFP (PS100010)
E. coli Selection:	Ampicillin (100 ug/mL)
ORF Nucleotide Sequence:	>RG238211 representing NM_001288636. Blue=ORF Red=Cloning site Green=Tag(s)

```
GCTCGTTTGTAGTAACCGTCAGAATTTTGTAAATACGACTCACTATAGGGCGGCCGGGAATTCGTCGACTG
GATCCGGTACCGAGGAGATCTGCCGCCGCGATCGCC
ATGAACCCCCAGTGGCACCCCTATGCTACTGTGGCACCCAGCACTTTAGCCACCCCCAGGCCAGGGCT
CTGGCCCCCAGCAGGCCCTGCAGCATGCACAGACCCCTGGCCCATGCCCTCCCCAGACGCTGCAGCAC
CCTCAGGGTATCCCGCCACCCAGGCAGTGTCCACCCTCAGAGCCTCCAGCAGCCTCAGGGCCTGGGC
CACCTCAGCCCATGGCCAAACCCAGGGCTTGGTCCACCCTCAGGCCCTGGCTCACCAGGGTCTCCAG
CACCCCCACAATCCCTTGTGCATGGAGGCCGGAAGATGCCAGACTCAGATGCCCCCCGAATGTGACC
GTGTCTACCTCAACTATCCCCCTTCAATGGCGGCCACTCTGCAGCACAGCCAGCCTCCGGACCTGAGT
AGCATCGTGCACCAGATCAACCAGTTTTGCCAGACGAGGGCAGGCATCAGCACTACCTCAGTGTGTGAG
GGCCAGATCGCCAACCCAGCCCCATTAGTCGAGTCTGCTCATCAATGCAAGCACCCGGGTGTCGACC
CACAGCGTCCCCACACCAATGCCTTTCATGTGTGGTCAATCCCATGGAGCACACCCACGCGGCCACCGCC
GCGTTGCTGTGTCAGGTCTGTCAACCTGCCACAGGCATCTCTCGCGTCCCCACTGGCTACCCTAGC
GACCTCAAGCCAGTCACTGGAACCAGCACCAGCTGGCCACCTACAGCAGATGTGCAGCGAGGCTAGT
GGGACGCCAGCCCCTGGCCTGACAGGCAAGCATGCGGCAGGACCGGAGTTGGCAGGGCCTGGCTTTGTG
GGCAAGGCCCTGCCTACCCGACGGAACCTGCCTGGCGCAGTCTTCCATCTGAAGCCACCCCTGGAA
AAGCCGACCCCATCCCCACCAAGTCAACGGCATGGCAGCCCATTTGGCCTACCCCAATGGTCACTACTTC
CAACCCCTGTGGAACAACATTCTGCCCACTCCAATAGCGACAGCTCGGGGTCTCAGGACCTTGCCATG
CCGTTCCACGGTGGGCAGCCACAGGTGCACCCCTCGACTGTGCGGCAGCTCCCGGGGCCCACTACCGA
GCAGGGACCGGGGGCGGTCCAGTGGCAAGCCAGAACAGCTTGATGCAAACAGTGGATTACCTAAGTGGG
GATTTCCAACAGGCCTGCTTCCGAGAACAGAGCCTGGCCATGCTGAGCAAGGCCACCGAGCCCCTGGC
AACCGAGCCCCGATCCACAGAGAGTCAAGTCTTTCATATTTCAGCACCCAGGGTATAGA
ACGCGTACGCGGCCGCTCGAG - GFP Tag - GTTTAAAC
```



[View online »](#)

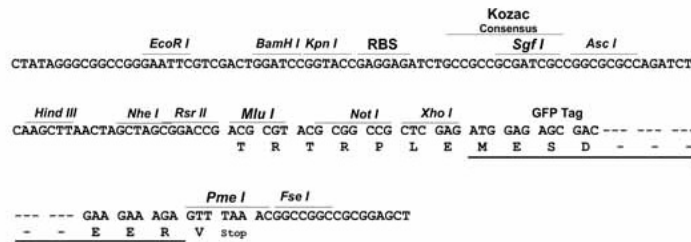
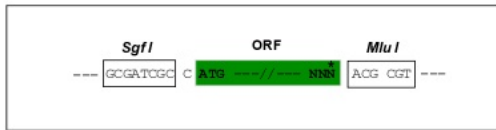
Protein Sequence: >Peptide sequence encoded by RG238211
 Blue=ORF Red=Cloning site Green=Tag(s)

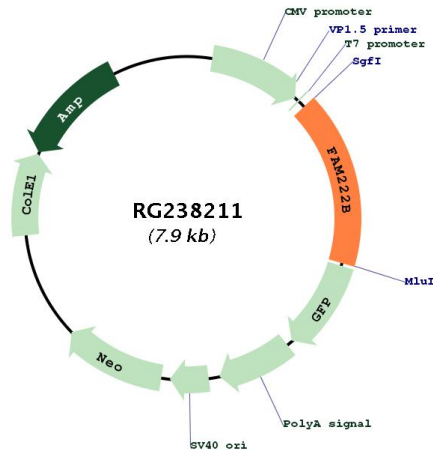
MNPPVAPYATVAPSTLAHPQAQALARQQALQHAQTLAHAPPQTLQHPQGIPPPQALSHPQSLQPPQGLG
 HPQPMATQQLVHPQALAHQGLQHPHNPLLHGGRKMPDSDAPPNVTVSTSTIPLSMAATLQHSQPPDLS
 SIVHQINQFCQTRAGISTTSVCEGQIANPSPISRLLINASTRVSTHSVPTPMPSCVVPMEHTAATA
 ALPAAGPVNLTGTISRVTGYPSDLKPVTVNQHLAHLQQMCSEASGTPAPGLTGKHAAGRELAPGFV
 GKAPAYPQELCLAQSFHLKPPELEKPTSPPPVNGMAAPLAYPNGHYFQPLWNNILPTPNSDSSGSQDLAM
 PFHGGQPTGAPLDCAAAPGAHYRAGTGGGPVAVASQNSLMQTVDYLSGDFQQACFREQLAMLSKAHRAPG
 NRAPDPTESRSLHIQHPGYR
 TRTRPLEMESDESGLPAMEIECRITGTLNGVEFELVGGGEGTPEQGRMTNKMSTKGALTFSPYLLSHV
 MGYGFYHFGTYPSGYENPFLHAINNGGYNTRIEKYEDGGVLHVSFSYRYEAGRVIGDFKVMGTGFPED
 SVIFTDKIIRSNATVEHLHPMGDNDLDGSFTRTFLRDGGYSSVVDSHMHFKSAIHPSILQNGGPMFA
 FRRVEEDHSNTELGIVEYQHAFKTPDADAGEERV

Restriction Sites: SgfI-MluI

Cloning Scheme:

Cloning sites used for ORF Shutting:



Plasmid Map:


ACCN: NM_001288636

ORF Size: 1302 bp

OTI Disclaimer: The molecular sequence of this clone aligns with the gene accession number as a point of reference only. However, individual transcript sequences of the same gene can differ through naturally occurring variations (e.g. polymorphisms), each with its own valid existence. This clone is substantially in agreement with the reference, but a complete review of all prevailing variants is recommended prior to use. [More info](#)

OTI Annotation: This clone was engineered to express the complete ORF with an expression tag. Expression varies depending on the nature of the gene.

Components: The ORF clone is ion-exchange column purified and shipped in a 2D barcoded Matrix tube containing 10ug of transfection-ready, dried plasmid DNA (reconstitute with 100 ul of water).

RefSeq: [NM_001288636.2](#)

RefSeq Size: 4251 bp

RefSeq ORF: 1305 bp

Locus ID: 55731

UniProt ID: [Q8WU58](#)

Cytogenetics: 17q11.2

MW: 46 kDa