

Product datasheet for **RG238208**

GALK2 (NM_001289031) Human Tagged ORF Clone

Product data:

Product Type:	Expression Plasmids
Product Name:	GALK2 (NM_001289031) Human Tagged ORF Clone
Tag:	TurboGFP
Symbol:	GALK2
Synonyms:	GK2
Mammalian Cell Selection:	Neomycin
Vector:	pCMV6-AC-GFP (PS100010)
E. coli Selection:	Ampicillin (100 ug/mL)
ORF Nucleotide Sequence:	>RG238208 representing NM_001289031. Blue=ORF Red=Cloning site Green=Tag(s)

```
GCTCGTTTGTAGTAACCGTCAGAATTTTGTAAACGACTCACTATAGGGCGCCGGGAATTCGTCGACTG
GATCCGGTACCGAGGAGATCTGCCGCCGCGATCGCC
ATGTTTAACTCCAAGTTTGGATCTATCCCAAGTTTTATGTTTCGAGCACCAGGAAGAGTCAACATAATA
GGAGAGCATATAGATTATTGTGGATATTCTGTTCTTCTATGGCTGTAGAACAAGATGTGCTAATAGCT
GTAGAACCTGTGAAAACGTACGCTCTCCAAGTGGCCAATACAAATCCCTTGATCCGGACTTCAGTACT
AGTGCTAATAACATCCAGATTGATAAAACCAAGCCTTTGTGGCACAACATTTCTTATGTGGACTTAAA
GGAATTCAGGAACACTTTGGTCTTAGTAACCTGACTGGAATGAACTGCCTGGTAGATGAAATATCCCA
CCAAGTTCTGGCCTCTCCAGCTCCAGTCTTTGGTCTGTTGTGCTGGCTTGGTGACGCTCACAGTGTG
GGAAGGAATCTATCCAAGGTGGAACCTGCAGAAATCTGTGCCAAGAGTGAGCGTTACATTGGCACTGAA
GGAGGAGGCATGGACCAGTCTATATCATTCTTGCAGAAGAAGGAACTGCCAAGTTGATAGAATTTAGT
CCTCTGAGGGCAACCGATGTAAACTCCCAAGTGGAGCAGTGTGTTGTGATTGCCAACAGTTGTGTGGAG
ATGAATAAGGCAGCAACTTCCCATTTCAATATCAGGGTGTAGGAGTGTGCGCTGGCTGCCAAGCTCCTG
GCTAAATACAAAAGCTTGCAATGGGACAAAGTACTGAGGCTGGAGGAGGTGCAGGCTAACTAGGGATT
AGTCTAGAAGAAATGCTGTTGGTACAGAAGATGCCCTTCATCCTGAACCCTATAACCCTGAGGAGATC
TGCAGGTGTCTGGGAATTAGCTGGAGGAACTCCGAACCCAAATCCTGAGTCCAAACACTCAAGATGTG
CTCATCTTCAAACCTATCAGCGGGCAAAGCATGTGTACAGCAGGCTGCCGAGTGCTCCAGTTTAAAG
AAGATATGTGAAGAAGCACCTGAAAACATGGTCCAGCTGCTGGGAGAGTTGATGAACCAGAGCCACATG
AGCTGCCGGGACATGTATGAGTGCAGCTGCCCGAGCTGGATCAGCTGGTGGACATCTGTGGAAGTTT
GGGGCTCAAGGTCACGACTTACTGGAGCAGGATGGGGAGGCTGCACAGTATCAATGGTACCTGCCGAC
AAGCTGCCAGCTTTCTAGCAAATGTGCACAAAGCTTATTACCAGAGGAGTGATGGAAGCTTAGCACCC
GAGAAGCAAAGTTTGTGTTGCTACCAAACCTGGAGGTGGGGCTTTGGTTTTGCTTGAGGCC
ACGCGTACGCGGCCGCTCGAG - GFP Tag - GTTTAAAC
```



[View online »](#)

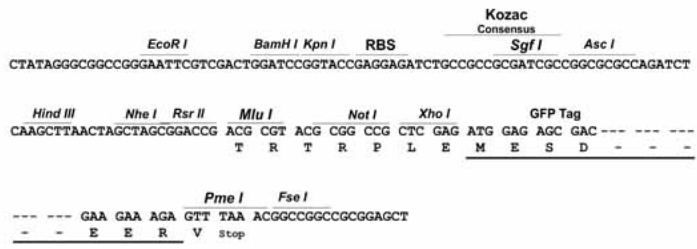
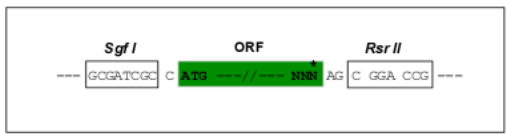
Protein Sequence: >Peptide sequence encoded by RG238208
 Blue=ORF Red=Cloning site Green=Tag(s)

MFNSKFGSIPKFYVRAPGRVNIIGEHIIDYCGYSVLPMAVEQDVLIAVEPVKTYALQLANTNPLYPDFST
 SANNIQIDKTKPLWHNYFLCGLKGIQEHFGLSNLTGMNCLVDGNIPSSGLSSSSALVCCAGLVTLLTVL
 GRNLSKVELAEICAKSERVIGTEGGMDQSI SFLAEEGTAKLIEF SPLRATDVKLP SGAVFVIANSCVE
 MNKAATSHFNIRVMECRLAAKLLAKYKSLQWDKVLRL EEVQAKLGI SLEEMLLVTE DALHPEPYNPEEI
 CRCLGISLEELRTQILSPNTQDVLIFKLYQRAKHVYSEAAARVLQFKKICEEAPENMVQLLGELMNQSHM
 SCRDMYECSCPELDQLVDICRKF GAQGSRLTGAGWGGCTVSMVPADKLP SFLANVHKAYYQRSDGSLAP
 EKQSLFATKPGGGALVLL EA
 TRTRPLEMESDESGLPAMEIECRITGTLNGVEFELVGGGEGTPEQGRMTNKMSTKGALTFSPYLLSHV
 MGYGFYHFGTYPSGYENPFLHAINNGGYNTRIEKYEDGGVLHVSFSYRYEAGRVIGDFKVMGTGFPED
 SVIFTDKIIIRSNATVEHLHPMGDNDLDGSFTRTFLRDGGYSSVVD SHMHFKA IHP SILQNGGPMFA
 FRRVEEDHSNTELGIVEYQHAFKTPDADAGEERV

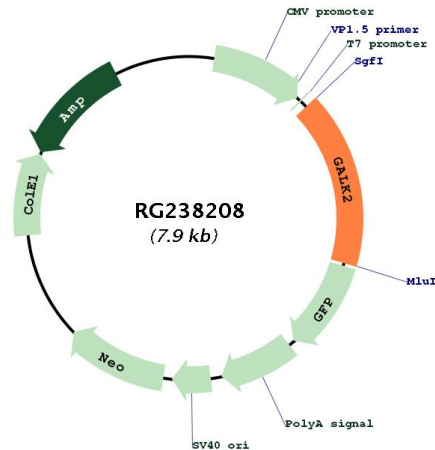
Restriction Sites: SgfI-RsrII

Cloning Scheme:

Cloning sites used for ORF Shutting:



Plasmid Map:



ACCN: NM_001289031

ORF Size: 1302 bp

OTI Disclaimer: The molecular sequence of this clone aligns with the gene accession number as a point of reference only. However, individual transcript sequences of the same gene can differ through naturally occurring variations (e.g. polymorphisms), each with its own valid existence. This clone is substantially in agreement with the reference, but a complete review of all prevailing variants is recommended prior to use. [More info](#)

OTI Annotation: This clone was engineered to express the complete ORF with an expression tag. Expression varies depending on the nature of the gene.

Components: The ORF clone is ion-exchange column purified and shipped in a 2D barcoded Matrix tube containing 10ug of transfection-ready, dried plasmid DNA (reconstitute with 100 ul of water).

RefSeq: [NM_001289031.1](#), [NP_001275960.1](#)

RefSeq Size: 3313 bp

RefSeq ORF: 1305 bp

Locus ID: 2585

Cytogenetics: 15q21.1-q21.2

Protein Families: Druggable Genome

Protein Pathways: Amino sugar and nucleotide sugar metabolism, Galactose metabolism, Metabolic pathways

MW: 48.1 kDa

Gene Summary: This gene encodes a highly efficient N-acetylgalactosamine (GalNAc) kinase, which has galactokinase activity when galactose is present at high concentrations. The encoded protein is a member of the GHMP kinase family. Alternative splicing results in multiple transcript variants. [provided by RefSeq, Jun 2017]