

Product datasheet for **RG238195**

FAM113B (PCED1B) (NM_001281429) Human Tagged ORF Clone

Product data:

Product Type:	Expression Plasmids
Product Name:	FAM113B (PCED1B) (NM_001281429) Human Tagged ORF Clone
Tag:	TurboGFP
Symbol:	FAM113B
Synonyms:	FAM113B
Mammalian Cell Selection:	Neomycin
Vector:	pCMV6-AC-GFP (PS100010)
E. coli Selection:	Ampicillin (100 ug/mL)
ORF Nucleotide Sequence:	>RG238195 representing NM_001281429. Blue=ORF Red=Cloning site Green=Tag(s)

```
GCTCGTTT TAGTGAACCGTCAGAATTTTGT AATACGACTCACTATAGGGCGGCCGGGAATTCGTCGACTG
GATCCGGTACCGAGGAGATCTGCCGCC GCGATCGCC
ATGATCCTTCTGCGGGCCTCCGAAGTGC GGCAGCTGCTT CACAATAAGTTCGTGGTCATCCTGGGGGAC
TCTGTGCATAGGGCAGTATACAAGGACCTGGT GCTTCTGCTGCAGAAGGACCGCTGCTCACTCCCGGG
CAGCTTAGAGCAAGGGGGGAGCTGA AACTTCGAACAAGATGAGCTGGTGGACGGAGGCCAGCGGGGCCAC
ATGCACAACGGCCTTAAC TACCGTGAGGTCGCGAGTTCGCTCCGACCACCATCTGGTACGTTTTTAC
TTCCTCACCCGCGTACTCCGATTACCTCCAGACCATCTT GAAAGAGCTGCAGTCGGGCGAGCACGCC
CCCGACCTGGTCATCATGAATTCCTGCCTTGGGACATCTCCAGGTATGGTCCGAACCTCTGGAGAAGC
TACCTGGAGAACCTGGAGAACCTGTTCCAGTGCCTGGGCCAGGTGCTGCCCGAGTCTTGCCCTCTGGTG
TGGAACACGGCCATGCCTGTGGGCGAGGAAGTCA CCGGGGTTTTCTTCCGCCAAGCTCCGGCGGCAG
AAGGCCACCTTCTGAAAAACGAAGTGGTCAAAGCCA AACTTCCACAGCGCCACCGAGGCACGTAAACAT
AACTTCGATGACTGGACTTGCAATTTCCACTTCCGCCACGCGAGGGAGA AACTGCAGTGGGACGGGGTG
CACTGGAATGGACGTGTGCACCGCTGCCTCTCCAGCTGCTGCTGGCCCACGTGGCCGACGCTGGGGT
GTGGAGCTGCCCCACCGCCACCCCGTGGGCGAGTGGATCAAGAAGAAAAA AACTGGCCCGAGAGTCGAA
GGGCCGCCCCAGGCCAACAGAAATCACCCGGCCTTACCTCTGTCCCCACCCCTTACCTTCCCCACATAC
CGCCCCCTGCTTGGGTTCCACCCAGCGCTTGGCGTGTCCCGCTCCTGTCCCCACAGCCTCCTCCT
CCCATCTCCATCACAGGGAATGCCCCGGTTCCACAGGGTCCCCCAGATGCCTGTTTTTCTCAGAC
CATACTTTCCAGTCGGATCAATTCTATTGCCATT CAGATGTCCTCATCAGCCATGCAGGTTTTCTTC
GTCGAAGACAATTTTATGGTTGGTCTCAGCTGCCTATGCCCTTCTTCCCACACCCCGTTATCAGCGG
CCTGCCCCAGTGGTACATAGGGTTTTGGCAGGTATCGTCCCCGTGGCCCTATACGCCCTGGGGACAG
CGGCCTCGACCTCAAAGAGAAGGGCCCCAGCCAATCCTGAGCCAAGGCCTCAA
ACGCGTACGCGGCCGCTCGAG - GFP Tag - GTTTAAAC
```



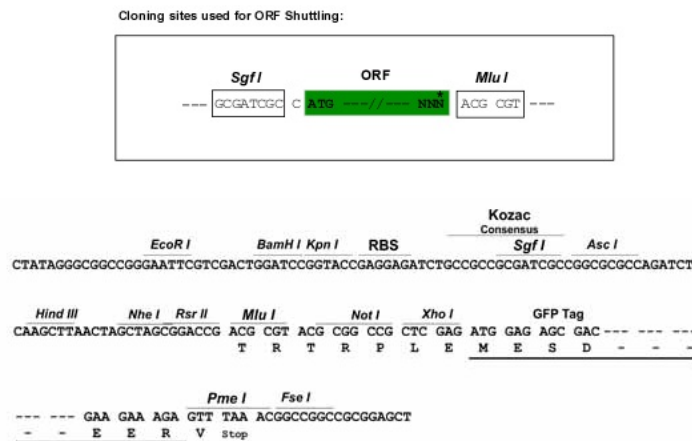
[View online »](#)

Protein Sequence: >Peptide sequence encoded by RG238195
 Blue=ORF Red=Cloning site Green=Tag(s)

MILLRASEVRQLLHNKFVVILGDSVHRAVYKDLVLLQKDRLLTPGQLRARGELNFEQDELVDGGQQRGH
 MHNGLNYREVREFRSDHHLVRFYFLTRVYSDYLQTIKELQSGEHAPDLVIMNSCLWDISRYGPNWSRS
 YLENLENLFQCLGQVLPESCLLVWNTAMPVGEVVTGGFLPPKLRRQKATFLKNEVVKANFHSATEARKH
 NFDVLDLHFHFRHARENLHWDGVHWNGRVHRCLSQLLLAHVADAWGVLPHRHPVGEWIKKKKPGPRVE
 GPPQANRNHPALPLSPPLPSPTYRPLLGFPPQRLPLLPLLSQPQPPPIILHHQGMPPRFQGGPPDACFSSD
 HTFQSDQFYCHSDVPSSAHAGFFVEDNFMVGPQLPMPFFPTPRYQRPAPVVHRGFGRYRPRGPYTPWGQ
 RPRPSKRRAPANPEPRPQ
 TRTRPLEMESDESGLPAMEIECRITGTLNGVEFELVGGGEGTPEQGRMTNKMSTKGALTFSPYLLSHV
 MGYGFYHFGTYPSGYENPFLHAINNGGYNTRIEKYEDGGVLHVSFSYRYEAGRVIGDFKVMGTGFPEP
 SVIFTDKIIRSNATVEHLHPMGDNDLDGSFTRTFLRDGGYSSVVDSHMHFKSAIHPSILQNGGPMFA
 FRRVEEDHSNTELGIVEYQHAFKTPDADAGEERV

Restriction Sites: SgfI-MluI

Cloning Scheme:



ACCN: NM_001281429

ORF Size: 1296 bp

OTI Disclaimer: The molecular sequence of this clone aligns with the gene accession number as a point of reference only. However, individual transcript sequences of the same gene can differ through naturally occurring variations (e.g. polymorphisms), each with its own valid existence. This clone is substantially in agreement with the reference, but a complete review of all prevailing variants is recommended prior to use. [More info](#)

OTI Annotation: This clone was engineered to express the complete ORF with an expression tag. Expression varies depending on the nature of the gene.

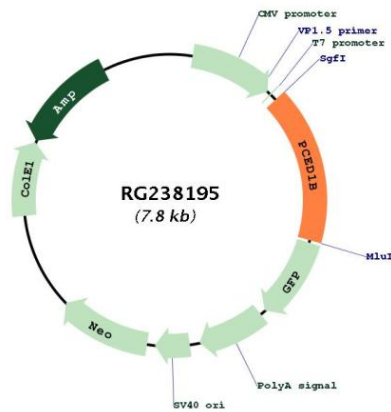
Components: The ORF clone is ion-exchange column purified and shipped in a 2D barcoded Matrix tube containing 10ug of transfection-ready, dried plasmid DNA (reconstitute with 100 ul of water).

RefSeq: [NM_001281429.1](#), [NP_001268358.1](#)

RefSeq Size: 1908 bp
 RefSeq ORF: 1299 bp
 Locus ID: 91523
 UniProt ID: [Q96HM7](#)
 Cytogenetics: 12q13.11
 MW: 49.7 kDa

Gene Summary: This gene encodes a protein that belongs to the GDSL/SGNH-like acyl-esterase family. Members of this family are hydrolases thought to function in modification of biopolymers on the cell surface. Alternate splicing results in multiple transcript variants encoding different isoforms. [provided by RefSeq, Jul 2013]

Product images:



Circular map for RG238195