

Product datasheet for **RG238194**

PRSS23 (NM_001293178) Human Tagged ORF Clone

Product data:

| | |
|---------------------------|--|
| Product Type: | Expression Plasmids |
| Product Name: | PRSS23 (NM_001293178) Human Tagged ORF Clone |
| Tag: | TurboGFP |
| Symbol: | PRSS23 |
| Synonyms: | SIG13; SPUVE; ZSIG13 |
| Mammalian Cell Selection: | Neomycin |
| Vector: | pCMV6-AC-GFP (PS100010) |
| E. coli Selection: | Ampicillin (100 ug/mL) |
| ORF Nucleotide Sequence: | >RG238194 representing NM_001293178. Blue=ORF Red=Cloning site Green=Tag(s) |

```
GCTCGTTTGTGAACCGTCAGAATTTGTAAACGACTCACTATAGGGCGCCGGGAATTCGTCGACTG
GATCCGGTACCGAGGAGATCTGCCGCCGCGATCGCC
ATGTGCAGTGGGGCGGGCGGCGTCCGCGCGGCTCCCCGAGGCCGAGGCGGGGGCGGGCGCTCGGG
TGGCGCGGGGGCGGACCCGCCAGCTGCCTGCGCTGCTCGCCAGCTTGCTCGCACTCGGCTGTGCGGC
GGGCAGGCATGGGAGCCGCGCTCTCTCCGCGCCACACCTGTCTGAGCGGCGCAGCGAGCCGCGG
CCCGGGCGGGCTGCTCGGCGGGAACAGTGTCTGGCATGGCAGGGATTCCAGGGCTCTCTCTCTCTC
TTCTTTCTGCTCTGTGCTTTGGCAAGTGAGCCCTTACAGTGCCCTTGAAACCCACTTGGCCTGCA
TACCGCTCCCTGTCGTCTTGGCCAGTCTACCCTCAATTTAGCCAAGCAATATCTGTCTTATGAAACG
CTCTATGCCAATGGCAGCCGCACAGAGACGCAGGTGGGCATCTACATCCTCAGCAGTAGTGGAGATGGG
GCCAACACCCGAGACTCAGGGTCTTTCAGAAAAGTCTCGAAGGAAGCGGCAGATTTATGGCTATGACAGC
AGGTTTCAGCATTTTGGGAAGGACTTCTGCTCAACTACCCTTTCTCAACATCAGTGAAGTTATCCACG
GGCTGCACCGGCACCCTGGTGGCAGAGAAGCATGTCTCACAGCTGCCACTGCATACACGATGGAAAA
ACCTATGTGAAAGGAACCCAGAAGCTTCGAGTGGGCTTCTAAAGCCCAAGTTTAAAGATGGTGGTCA
GGGGCAACGACTCCACTTCAGCCATGCCGAGCAGATGAAATTCAGTGGATCCGGGTGAAACGCACC
CATGTGCCAAGGTTGGATCAAGGGCAATGCCAATGACATCGGCATGGATTATGATTATGCCCTCTG
GAACTCAAAAAGCCCAAGAGAAAATTTATGAAGATTGGGGTGAGCCCTCTGCTAAGCAGCTGCCA
GGGGCAGAAATCACTTCTCTGTTATGACAATGACCGACAGGCAATTTGGTGTATCGCTTCTGTGAC
GTCAAAGACGAGACCTATGACTTCTCTACCAGCAATGCGATGCCAGCCAGGGGCCAGCGGGTCTGGG
GTCTATGTGAGGATGTGGAAGAGACAGCAGCAGAAGTGGGAGCGAAAAATTATTGGCATTTTTTCAGGG
CACCAGTGGTGGACATGAATGGTTCCCCACAGGATTTCAACGTGGCTGTGAGAACTACTCTCTCAAA
TATGCCAGATTTGCTATTGGATTAAGGAAACTACCTGGATTGTAGGGAGGGG
ACGCGTACGCGGCCGCTCGAG - GFP Tag - GTTTAAAC
```



[View online »](#)

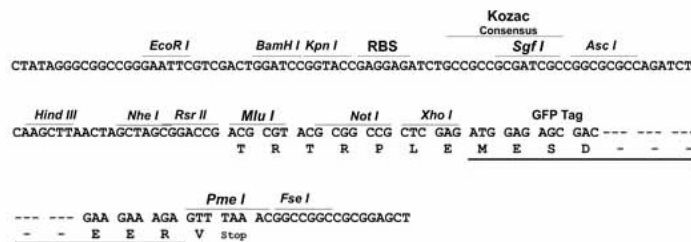
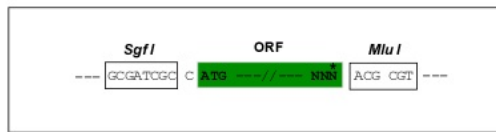
Protein Sequence: >Peptide sequence encoded by RG238194
 Blue=ORF Red=Cloning site Green=Tag(s)

MCSGAGGVRAASPRPEAGRAGLGWRGGTRQLPALLASLLALGCAAGQAWEPRALSRPHLSERRSEPR
 PGRAARRGTVLGMAGIPGLLFLFFLLCAVGQVSPYSAPWKPTWPAYRLPVVLPQSTLNLAQOYLSYET
 LYANGSRTEQVGIYILSSSGDGAQHRDSGSSGKSRRKRQIYGYSRFSIFGKDFLLNYPFSTSVKLST
 GCTGTLVAEKHVLTAHCIDHGKTYVKGTKLRLVGFLLKPKFKDGGRGANDSTSAMPEQMKFQWIRVKRT
 HVPKGIKGNANDIGMDYDIALLELKKPHKRKFMKIGVSPPAKQLPGGRIHFSGYDNDRPNLVYRFCD
 VKDETYDLLYQQCDAQPGASGSGYVVRMWRQQQKWERKIIGIFSGHQWVDMNGSPQDFNVAVRITPLK
 YAQICYWIKGNLYDCREG
 TRTRPLEMESDESGLPAMEIECRITGTLNGVEFELVGGEGTPEQGRMTNKMSTKGALTFSPYLLSHV
 MGYGFYHFGTYPSTYENPFLHAINNGGYNTRIEKYEDGGVLHVSFSYRYEAGRVIGDFKVMGTGFPED
 SVIFTDKIIRSNATVEHLHPMGDNDLDGSFTRTFSLRDGGYSSVVDSHMHFKSAIHPSILQNGGPMFA
 FRRVEEDHSNTELGIVEYQHAFKTPDADAGEERV

Restriction Sites: SgfI-MluI

Cloning Scheme:

Cloning sites used for ORF Shuttling:



ACCN: NM_001293178

ORF Size: 1296 bp

OTI Disclaimer: The molecular sequence of this clone aligns with the gene accession number as a point of reference only. However, individual transcript sequences of the same gene can differ through naturally occurring variations (e.g. polymorphisms), each with its own valid existence. This clone is substantially in agreement with the reference, but a complete review of all prevailing variants is recommended prior to use. [More info](#)

OTI Annotation: This clone was engineered to express the complete ORF with an expression tag. Expression varies depending on the nature of the gene.

Components: The ORF clone is ion-exchange column purified and shipped in a 2D barcoded Matrix tube containing 10ug of transfection-ready, dried plasmid DNA (reconstitute with 100 ul of water).

RefSeq: [NM_001293178.1](#), [NP_001280107.1](#)

RefSeq Size: 3919 bp
 RefSeq ORF: 1299 bp
 Locus ID: 11098

UniProt ID: [Q95084](#)

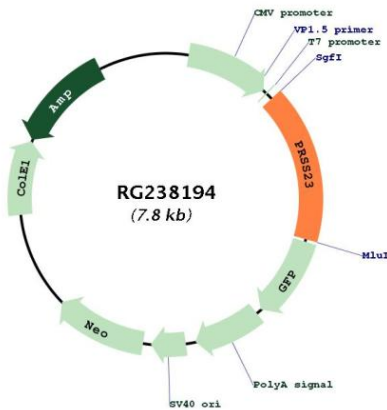
Cytogenetics: 11q14.2

Protein Families: Druggable Genome, Protease, Secreted Protein

MW: 48.5 kDa

Gene Summary: This gene encodes a conserved member of the trypsin family of serine proteases. Mouse studies found a decrease of mRNA levels of this gene after ovulation was induced. Alternative splicing results in multiple transcript variants. [provided by RefSeq, Jun 2014]

Product images:



Circular map for RG238194