

Product datasheet for **RG238191**

RHD (NM_001282872) Human Tagged ORF Clone

Product data:

Product Type:	Expression Plasmids
Product Name:	RHD (NM_001282872) Human Tagged ORF Clone
Tag:	TurboGFP
Symbol:	RHD
Synonyms:	CD240D; DIIIc; RH; Rh4; RH30; RHCED; RhDCw; RHDel; RHDVA(TT); RhII; RhK562-II; RhPI; RHPII; RHXIII
Mammalian Cell Selection:	Neomycin
Vector:	pCMV6-AC-GFP (PS100010)
E. coli Selection:	Ampicillin (100 ug/mL)
ORF Nucleotide Sequence:	>RG238191 representing NM_001282872. Blue=ORF Red=Cloning site Green=Tag(s)

```
GCTCGTTTAGTGAACCGTCAGAATTTTGTAAATACGACTCACTATAGGGCGGCCGGGAATTCGTCGACTG
GATCCGGTACCGAGGAGATCTGCCGCCGCGATCGCC
ATGAGCTCTAAGTACCCGCGGTCTGTCCGGCGCTGCCTGCCCTCTGGGCCCTAACACTGGAAGCAGCT
CTCATTCTCCTCTTCTATTTTTTTTACCCACTATGACGCTTCCTTAGAGGATCAAAAGGGGCTCGTGGCA
TCCTATCAAGTTGGCCAAGATCTGACCGTGATGGCGGCCATTGGCTTGGGCTTCCTCACCTCGAGTTTC
CGGAGACACAGCTGGAGCAGTGTGGCCTTCAACCTCTTCATGCTGGCGCTTGGTGTGCAGTGGGCAATC
CTGCTGGACGGCTTCTGAGCCAGTTCCTTCTGGGAAGGTGGTCATCACACTGTTCAAGTATTGGCTG
GCCACCATGAGTCTTTGTCGGTCTGATCTCAGTGGATGCTGTCTTGGGAAGGTCAACTTGGCGCAG
TTGGTGGTGGTGGTGGTGGAGGTGACAGCTTTAGGCAACCTGAGGATGGTCATCAGTAATATCTTC
AACACAGACTACCACATGAACATGATGCACATCTACGTGTTCCGACGCTATTTTGGGCTGTCTGTGGCC
TGGTGCCTGCCAAAGCCTTACCCGAGGGAACGGAGGATAAAGATCAGACAGCAACGATACCCAGTTTG
TCTGCCATGCTGGGCGCCCTCTTCTGTGGATGTTCTGGCCAAGTTTCAACTCTGCTCTGCTGAGAAGT
CCAATCGAAAGGAAGAATGCCGTGTTCAACACCTACTATGCTGTAGCAGTCAGCGTGGTGACAGCCATC
TCAGGGTCATCCTTGGCTCACCCCAAGGGAAGATCAGCAAGACTTATGTGCACAGTGGGTGTTGGCA
GGAGGCGTGGCTGTGGGTACCTCGTGTACCTGATCCCTTCTCCGTGGCTTGCCATGGTGTGGGCTT
GTGGCTGGGCTGATCTCCGTGGGGGAGCCAAGTACCTGCCGGGTGTTGTAACCGAGTGTGGGGATT
CCCCACAGCTCCATCATGGGCTACAACCTCAGCTTGTGGGTCTGCTTGGAGAGATCATCTACATTGTG
CTGCTGGTGTGATACCGTGGAGCGGCAATGGCATGCTCACTCGGCTGGAACCTGGCTGTAATAAATG
GCTGAAGCAGGTGATGAGGAGCTGATGCGTTTGGACGTGTCTCAGAGAAATCATGGAGGCGCTGCGGTT
CCTACCGTTCCTGGATGCCTTCTACAGAGACAACCATAGCCCCAAATTATAGGGATCACATATCAGTG
GGATTGGCTTCCAGTCTCCTCAGCATTGGGGAACCTCAGCTTGGCCATCG
ACGCGTACGCGGCCGCTCGAG - GFP Tag - GTTTAAAC
```



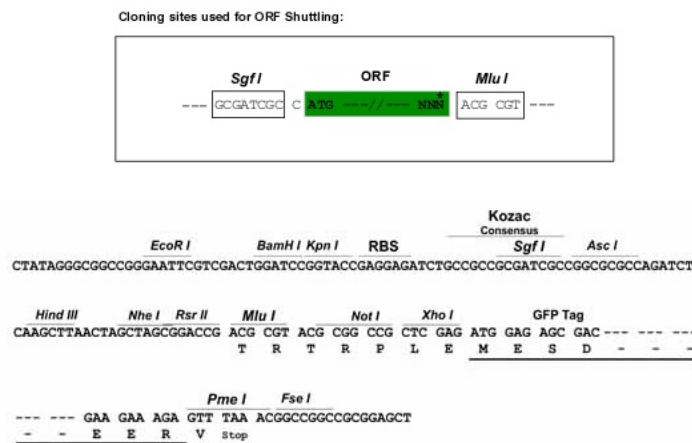
[View online >](#)

Protein Sequence: >Peptide sequence encoded by RG238191
 Blue=ORF Red=Cloning site Green=Tag(s)

MSSKYPRSVRRCLPLWALTEAALILLFYFFTHYDASLEDQKGLVASYQVGQDLTVMAAIGLGFLTSSF
 RRRHSWSSVAFNLFMLALGVQWAILLDGFLSQFPSPGKVVITLFSIRLATMSALSVLISVDAVLGKVNLAQ
 LVVMVLVEVTALGNLRMVISNIFNTDYHMNMHIYVFAAYFGLSVAWCLPKPLPEGTEKDQATATIPSL
 SAMLGALFLWMFWPSFNALLRSPIERKNAVFNTYYAVAVSVVTAISGSSLAHPQGIKITYVHSAVLA
 GGVAVGTSCHLIPSPWLAMVLGLVAGLISVGGAKYLPGCCNRVLGIPHSSIMGYNFSLGLLGEIYIV
 LLVLDTVGAGNGMSLGNLAVKMAEAGDEELMRLDVSQRNHGAAVPTGSWMPSTETTIAPNYRDHISV
 GLASRSSALGNSAWPS
TRTRPLEMESDESGLPAMEIECRITGTLNGVEFELVGGEGTPEQGRMTNKMSTKGALTFSPYLLSHV
 MGYGFYHFGTYPSGYENPFLHAINNGGYNTRIEKYEDGGVLHVSFSYRYEAGRVIGDFKVMGTGFPED
 SVIFTDKIIRSNATVEHLHPMGDNDLDGSFTRTFLRDGGYSSVVDSHMHFKSAIHPSILQNGGPMFA
 FRRVEEDHSNTELGIVEYQHAFKTPDADAGEERV

Restriction Sites: Sgfl-MluI

Cloning Scheme:



ACCN: NM_001282872

ORF Size: 1293 bp

OTI Disclaimer: The molecular sequence of this clone aligns with the gene accession number as a point of reference only. However, individual transcript sequences of the same gene can differ through naturally occurring variations (e.g. polymorphisms), each with its own valid existence. This clone is substantially in agreement with the reference, but a complete review of all prevailing variants is recommended prior to use. [More info](#)

OTI Annotation: This clone was engineered to express the complete ORF with an expression tag. Expression varies depending on the nature of the gene.

Components: The ORF clone is ion-exchange column purified and shipped in a 2D barcoded Matrix tube containing 10ug of transfection-ready, dried plasmid DNA (reconstitute with 100 ul of water).

RefSeq: [NM_001282872.1](#), [NP_001269801.1](#)

RefSeq Size: 2933 bp

RefSeq ORF: 1296 bp

Locus ID: 6007

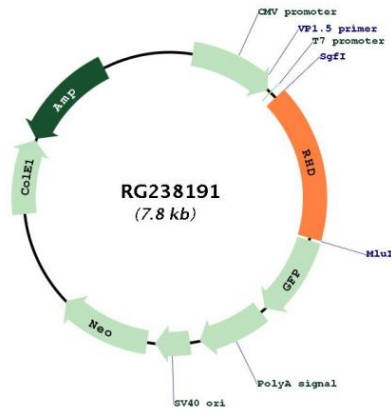
Cytogenetics: 1p36.11

Protein Families: Transmembrane

MW: 46.8 kDa

Gene Summary: The Rh blood group system is the second most clinically significant of the blood groups, second only to ABO. It is also the most polymorphic of the blood groups, with variations due to deletions, gene conversions, and missense mutations. The Rh blood group includes this gene, which encodes the RhD protein, and a second gene that encodes both the RhC and RhE antigens on a single polypeptide. The two genes, and a third unrelated gene, are found in a cluster on chromosome 1. The classification of Rh-positive and Rh-negative individuals is determined by the presence or absence of the highly immunogenic RhD protein on the surface of erythrocytes. Multiple transcript variants encoding different isoforms have been found for this gene. [provided by RefSeq, Jul 2008]

Product images:



Circular map for RG238191