

Product datasheet for **RG238179**

PDXDC1 (NM_001285450) Human Tagged ORF Clone

Product data:

Product Type:	Expression Plasmids
Product Name:	PDXDC1 (NM_001285450) Human Tagged ORF Clone
Tag:	TurboGFP
Symbol:	PDXDC1
Synonyms:	LP8165
Mammalian Cell Selection:	Neomycin
Vector:	pCMV6-AC-GFP (PS100010)
E. coli Selection:	Ampicillin (100 ug/mL)
ORF Nucleotide Sequence:	>RG238179 representing NM_001285450. Blue=ORF Red=Cloning site Green=Tag(s)

```
GCTCGTTTGTAGTGAACCGTCAGAATTTTGTAAACGACTCACTATAGGGCGCCGGGAATTCGTCGACTG
GATCCGGTACCGAGGAGATCTGCCGCCGCGATCGCC
ATGGACGCGTCCCTGGAGAAGATAGCAGACCCACGTTAGCTGAAATGGGAAAAAATTGAAGGAGGCA
GTGAAGATGCTGGAGGACAGTCAGAGAAGAAGAGGAAAAATGGAAAGAAGCTCATATCCGGAGAT
ATTCCAGGCCACTCCAGGGCAGTGGGCAAGATATGGTGAGCATCCTCCAGTTAGTTCAGAATCTCATG
CATGGAGATGAAGATGAGGAGCCCCAGAGCCCCAGAATCCAAAATATTGGAGAACAAGGTCATATGGCT
TTGTTGGGACATAGTCTGGGAGCTTATATTTCAACTCTGGACAAAGAGAAGCTGAGAAAACCTTAACT
AGGATACTTTTTCAGATACCACCTTATGGCTATGCAGAATTTTCAGATATGAAAATGGGTGTGCTTATTTTC
CACGAAGAGGAAAAGAGAAGGACTTGCAAAGATATGTAGGCTTGCCATTCTCGATATGAAGACTTC
GTAGTGGATGGCTTCAATGTGTTATATAACAAGAAGCCTGTCATATATCTTAGTGCTGCTGCTAGACCT
GGCCTGGGCCAATACCTTTGTAATCAGGATGTTGCCTTCTGGAGAACTGATTAAGATGATATAGAG
CGAGGAAGACTGCCCTGTTGCTTGTGCGCAATGCAGGAACGGCAGCAGTAGGACACACAGACAAGATT
GGGAGATTGAAAGAACTCTGTGAGCAGTATGGCATATGGCTTTCATGTGGAGGGTGTGAATCTGGCAACA
TTGGCTCTGGGTTATGTCTCCTCATCAGTGCTGGCTGCAGCCAAATGTGATAGCATGACGATGACTCCT
GGCCCGTGGCTGGGTTTGCCAGCTGTTCTGCGGTGACACTGTATAAACACGATGACCCTGCCTTGACT
TTAGTTGCTGGTCTTACATCAAATAAGCCACAGACAACTCCGTGCCCTGCCTCTGTGGTTATCTTTA
CAATACTTGGGACTTGTGGGTTTGTGGAGAGGATCAAGCATGCCTGTCAACTGAGTCAACGGTTGCAG
GAAAGTTTGAAGAAAGTGAATTACATCAAATCTTGGTGAAGATGAGCTCAGCTCCCCAGTGGTGGTG
TTCAGATTTTTCCAGGAATTACCAGGCTCAGATCCGGTGTAAAGCCGTCAGTCCCCAATGACA
CCTTCAGGAGTCGGCCGGGAGAGGCACTCGTGTGACGCGCTGAATCGCTGGGTGAGAATGGCAGTCACC
CCCCTTCTTTTCCAGGTCCTCCATCACCATCCGACCTGCTGG
AGCGGACCGACGCTACGCGCCGCTCGAG - GFP Tag - GTTTAAAC
```



[View online »](#)

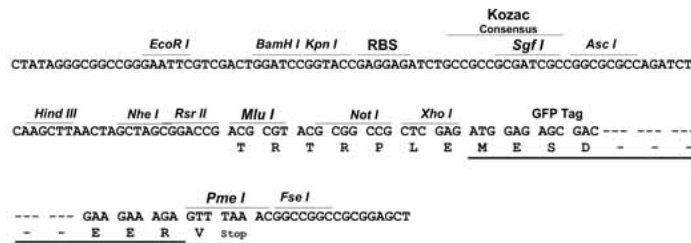
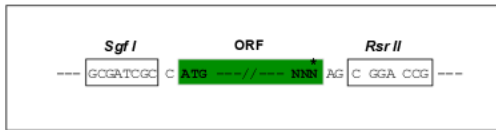
Protein Sequence: >Peptide sequence encoded by RG238179
 Blue=ORF Red=Cloning site Green=Tag(s)

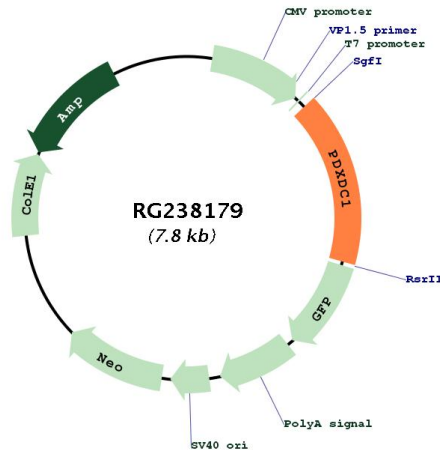
MDASLEKIADPTLAEMGKNLKEAVKMLEDSQRRTTEEENGKKLISGDI PGPLQSGQDMVSILQLVQNL M
 HGDEDEEPPSPRIQNIQEQQHMALLGHSLGAYISTLDKEKLRKLTTRILSDTTLWLCRIFRYENGCA YF
 HEEEREGLAKICRLAIHSRYEDFVVDGFNVLYNKKPVIYLSAAARPGLGQYLCNQDVAFLEKLIKDDIE
 RGRLPLLLVANAGTAAVGHTDKIGRLKELCEQYGIWLHVEGVNLATLALGYVSSSVLAAAKCDSMTMTP
 GPWLG LPAVPAVTLYKHDDPALTLVAGLTSNKPTDKLRALPLWLSLQYLGLDGFVERIKHACLSQRLQ
 ESLKKNYIKILVEDELSPPVVVFRFFQELPGSDPVFKA VVPVNMTPSGVGRERHSCDALNRWVRMAVT
 PLSFQVPVHHPTCW
 SGPTRTRPLEMESDESGLPAMEIECRITGTLNGVEFELVGGEGTPEQGRMTNKMKSTKGALTFSPYLL
 SHVMGYGFYHFGTYPSTYENPFLHAINNGGYNTRIEKYEDGGVLHVSFSYRYEAGRVIGDFKVMGTGF
 PEDSVIFTDKIIRS NATVEHLHPMGDNDLDGSFTRTFSLRDGGYSSVVD SHMHFKSAIHPSILQNGGP
 MFAFRRVEEDHSNTELGIVEYQHAFKTPDADAGEERV

Restriction Sites: SgfI-RsrII

Cloning Scheme:

Cloning sites used for ORF Shutting:



Plasmid Map:


ACCN: NM_001285450

ORF Size: 1287 bp

OTI Disclaimer: The molecular sequence of this clone aligns with the gene accession number as a point of reference only. However, individual transcript sequences of the same gene can differ through naturally occurring variations (e.g. polymorphisms), each with its own valid existence. This clone is substantially in agreement with the reference, but a complete review of all prevailing variants is recommended prior to use. [More info](#)

OTI Annotation: This clone was engineered to express the complete ORF with an expression tag. Expression varies depending on the nature of the gene.

Components: The ORF clone is ion-exchange column purified and shipped in a 2D barcoded Matrix tube containing 10ug of transfection-ready, dried plasmid DNA (reconstitute with 100 ul of water).

RefSeq: [NM_001285450.2](#)

RefSeq Size: 2313 bp

RefSeq ORF: 1290 bp

Locus ID: 23042

UniProt ID: [Q6P996](#)

Cytogenetics: 16p13.11

MW: 48.2 kDa