

## Product datasheet for **RG238171**

### Pregnancy Specific Glycoprotein 1 (PSG1) (NM\_001297773) Human Tagged ORF Clone

#### Product data:

Product Type:	Expression Plasmids
Product Name:	Pregnancy Specific Glycoprotein 1 (PSG1) (NM_001297773) Human Tagged ORF Clone
Tag:	TurboGFP
Symbol:	PSG1
Synonyms:	B1G1; CD66f; DHFRP2; FL-NCA-1/2; PBG1; PS-beta-C/D; PS-beta-G-1; PSBG-1; PSBG1; PSG95; PSGGA; PSGIIA; SP1
Mammalian Cell Selection:	Neomycin
Vector:	pCMV6-AC-GFP (PS100010)
E. coli Selection:	Ampicillin (100 ug/mL)
ORF Nucleotide Sequence:	>RG238171 representing NM_001297773. Blue=ORF Red=Cloning site Green=Tag(s)

```
GCTCGTTTAGTGAACCGTCAGAATTTTGTAAACGACTCACTATAGGGCGGCCGGGAATTCGTCGACTG
GATCCGGTACCGAGGAGATCTGCCGCCGCGATCGCC
ATGGGAACCCCTCTCAGCCCTCCCTGCACACAGCGCATCAAATGGAAGGGGCTCCTGCTCACAGCATCA
CTTTTAAACTTCTGGAACCTGCCACCCTGCCCAGTCAAGTCAAGTGAAGCCGAGCCAACCAAGTTTCC
GAGGGGAAGGATGTTCTTCTACTTGTCCACAATTTGCCCCAGAATCTTACCGGCTACATCTGGTACAAA
GGGCAATGAGGGACCTTACCATTACATTACATCATATGTAGTAGACGGTAAAATAATTATATATGGG
CCTGCATATAGTGGACGAGAAACAGCATATCCAATGCATCCCTGCTGATCCAGAATGTCACCCGGGAG
GACGCAGGATCCTACACCTTACACATCATAAAGGGAGATGATGGGACTAGAGGAGTAACTGGACGTTTC
ACCTTACCTTACACCTGGAGACTCCTAAGCCCTCCATCTCCAGCAGCAACTTAAATCCCAGGGAGACC
ATGGAGGCTGTGAGCTTAACTGTGACCCTGAGACTCCAGACGCAAGCTACCTGTGGTGGATGAATGGT
CAGAGCCTCCCTATGACTCACAGCTTGAAGCTGTCCGAAACCAACAGGACCCTCTTCTATTGGGTGTC
ACAAAGTATACTGCAGGACCCTATGAATGTGAAATACGGAACCCAGTGAGTGCCAGCCGAGTGACCCA
GTCACCCTGAATCTCCTCCCGAAGCTGCCAAGCCCTACATCACCATCAACAACCTTAAACCCAGGGAG
AATAAGGATGTCTTAACTTACCTGTGAACCTAAGAGTGAGAACTACACCTACATTTGGTGGCTAAAT
GGTCAGAGCCTCCCGGTCACTCCAGGGTAAAGCGACCCATTGAAACAGGATCCTCATTCTACCCAGT
GTCACGAGAAATGAAACAGGACCCTATCAATGTGAAATACGGGACCGATATGGTGGCATCCGAGTGAC
CCAGTCAACCTGAATGTCTCTATGGTCCAGACCTCCCAAGAAATTTACCTTCACTACCTATTACCGT
TCAGGAGAAGTCTCTACTTGTCTGTCTGCGGACTTAACCCACCGGCACAGTATTCTGGACAATT
AATGAAAAGTTTCAGCTACCAGGACAAAAGCTCTTTATCCGCCATATTACTACAAAGCATAGCGGGCTC
TATGTTTGCTCTGTTCTGTAACCTAGCCACTGGCAAGGAAAGCTCCAAATCCATGACAGTCAAGTCTCT
GCTTATAGCAGTTCAATAAACTATACTTCTGGGAACCGTAAT
ACGCGTACGCGGCCGCTCGAG - GFP Tag - GTTAAAC
```



[View online »](#)

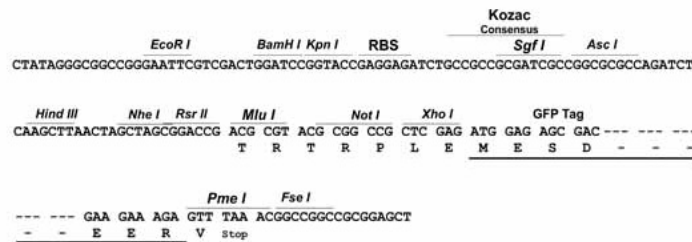
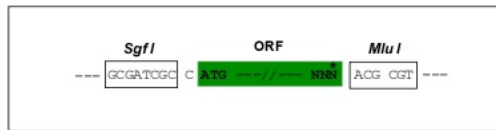
**Protein Sequence:** >Peptide sequence encoded by RG238171  
 Blue=ORF Red=Cloning site Green=Tag(s)

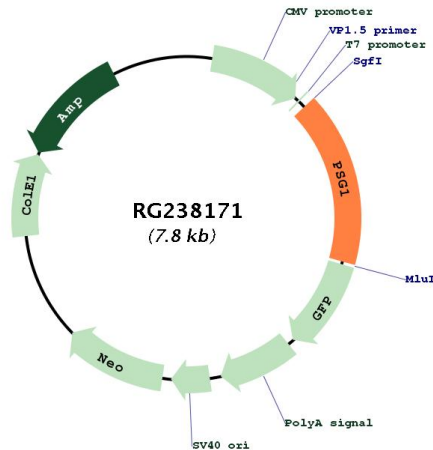
MGTL SAPPCTQRIKWKGLLLTASLLNFWNLPTTAQVTIEAEPKVSSEKDVLLL VHNLPQNL TGYIWK  
 GQMRDL YHYITSYVVDGEII IYGPAYSGRETAYSNASLLIQNVTREDAGSYTLHIKGGDTRGVTGRF  
 TFTLHLETPKPSI SSSNLNPRETMEAVSLTCDPETPDASYLWMMNGQSLPMTSHLKLSETNRTL FLLGV  
 TKYTAGPYECEIRNPVSASRSDPVTLNLLPKLPKYITINNLNPRENKDVLNFTCEPKSENYTYIWWLN  
 GQSLPVSPRVKRP IENRILILPSVTRNETGPYQCEIRDYGGIRSDPVTLNVLYGPDLPRIYPSFTYYR  
 SGVLYLSCSADSNPPAQYSWTINEKFQLPGQKLFIRHITTKHSGLYVCSVRNSATGKESKSMTEVVS  
 AYSSSINYTSGNRN  
**TRTRPLEMESDESGLPAMEIECRITGTLNGVEFELVGGEGTPEQGRMTNKMSTKGALTFSPYLLSHV**  
 MGYGFYHFGTYPSGYENPFLHAINNGGYNTRIEKYEDGGVLHVSFSYRYEAGRVIGDFKVMGTGFPED  
 SVIFTDKIIRSNATVEHLHPMGDNDLDGSFTRTFLRDGGYSSVVD SHMHFKSAIHPSILQNGGPMFA  
 FRRVEEDHSNTELGIVEYQHAFKTPDADAGEERV

**Restriction Sites:** Sgfl-MluI

**Cloning Scheme:**

Cloning sites used for ORF Shuttling:



**Plasmid Map:**


**ACCN:** NM\_001297773

**ORF Size:** 1284 bp

**OTI Disclaimer:** The molecular sequence of this clone aligns with the gene accession number as a point of reference only. However, individual transcript sequences of the same gene can differ through naturally occurring variations (e.g. polymorphisms), each with its own valid existence. This clone is substantially in agreement with the reference, but a complete review of all prevailing variants is recommended prior to use. [More info](#)

**OTI Annotation:** This clone was engineered to express the complete ORF with an expression tag. Expression varies depending on the nature of the gene.

**Components:** The ORF clone is ion-exchange column purified and shipped in a 2D barcoded Matrix tube containing 10ug of transfection-ready, dried plasmid DNA (reconstitute with 100 ul of water).

**RefSeq:** [NM\\_001297773.2](#)

**RefSeq Size:** 1882 bp

**RefSeq ORF:** 1287 bp

**Locus ID:** 5669

**UniProt ID:** [P11464](#)

**Cytogenetics:** 19q13.2

**Protein Families:** Secreted Protein

**MW:** 48.6 kDa

**Gene Summary:**

The human placenta is a multihormonal endocrine organ that produces hormones, enzymes, and other molecules that support fetal survival and development. Pregnancy-specific beta-1-glycoprotein (PSBG, PSG) is a major product of the syncytiotrophoblast, reaching concentrations of 100 to 290 mg/l at term in the serum of pregnant women (Horne et al., 1976 [PubMed 971765]). PSG is a member of the immunoglobulin (Ig) superfamily (Watanabe and Chou, 1988 [PubMed 3257488]; Streydio et al., 1988 [PubMed 3260773]). [supplied by OMIM, Oct 2009]