

## Product datasheet for **RG238169**

### ELP3 (NM\_001284225) Human Tagged ORF Clone

#### Product data:

Product Type:	Expression Plasmids
Product Name:	ELP3 (NM_001284225) Human Tagged ORF Clone
Tag:	TurboGFP
Symbol:	ELP3
Synonyms:	KAT9
Mammalian Cell Selection:	Neomycin
Vector:	pCMV6-AC-GFP (PS100010)
E. coli Selection:	Ampicillin (100 ug/mL)
ORF Nucleotide Sequence:	>RG238169 representing NM_001284225. Blue=ORF Red=Cloning site Green=Tag(s)

```
GCTCGTTTAGTGAACCGTCAGAATTTTGTAAACGACTACTATAGGGCGCCGGGAATTCGTCGACTG
GATCCGGTACCGAGGAGATCTGCCGCCGCGATCGCC
ATGTCCACACATCAGTTTTACAGGAAATATATGTGTCCAACCTCCATGAGAGCTATCCGTGCCAGATAT
GACCCCTTCTACAGACAAGACACCGAATAGAACAGTTAAACAACCTGGTCATAGTGTGGATAAAGTG
GAGTTTATTGTGATGGGTGGAACGTTTATGGCCCTTCCAGAAGAATACAGAGATTATTTATTCGAAAT
TTACATGATGCCTTATCAGGACATACTCCAACAATTTACGAGGCAGTCAAGTATTCTGAGAGAAGC
CTCACAAGTGTATTGGAATTACTATTGAAACCAGACCAGATTACTGCATGAAGCGACATTTAAGTGAC
ATGTTGACCTATGGCTGCACAAGGCTGGAGATTGGGGTGCAGAGTGTATGAAGATGTGGCTAGAGAC
ACCAACAGGGGCCACACTGTGAAGGCAGTGTGTGAGTCATTTACCTGGCCAAAGATTCCGGTTTTAAA
GTGGTGGCCCATATGATGCCTGACCTGCCAAACGTGGGACTAGAAAGAGACATTGAACAGTTCACAGAG
TTTTTTGAGAACCCTGCTTTTCGTCGCCGATGGGCTGAAACTCTATCCTACCCTGGTGATTCGTGGGACC
GGGCTTTATGAGCTTTGGAAATCAGGAAGATAAAGAGTTACTCTCCTAGTGACCTGGTTGAATTGGTG
GCTCGGATCCTAGCCCTCGTGCCCTCATGGACTCGAGTGTACCGAGTACAGAGGGATTTCCAATGCCT
TTAGTTAGCTCAGGAGTAGAGCATGGTAACCTGAGAGAGCTGGCACTTGAAGAATGAAAGACCTCGGA
ATACAGTGTGAGATGTGAGAACCAGAGAAGTTGGAATCCAAGAAATTCATCACAAGTACGGCCATAC
CAGGTTGAATTGGTAAGGAGAGATTATGTTGCAAATGGTGGCTGGGAAACATTCTGTGATACGAAGAC
CCAGATCAAGACATTTTATTGGCTCCTACGATTACGCAAGTGTTCAGAAGAAACTTTCCGTTTTCGAA
TTGGGTGGAGGTGTCTCCATAGTACGAGAGCTGCATGTGTATGGGAGTGTGGTCCCTGTGAGCAGCCGG
GATCCTACTAAATTTAGCATCAGGGATTTGGCATGCTGCTGATGGAGGAAGCAGAAAGAATAGCTAGA
GAAGAACATGGTCTGGGAAAAATCGCTGTGATATCAGGGGTGGCACCAGGAATTATTATAGAAAGATC
GGCTACAGATTACAAGGCCCGTACATGGTGAAGATGCTGAAA
ACGCGTACGCGGCCGCTCGAG - GFP Tag - GTTTAAAC
```



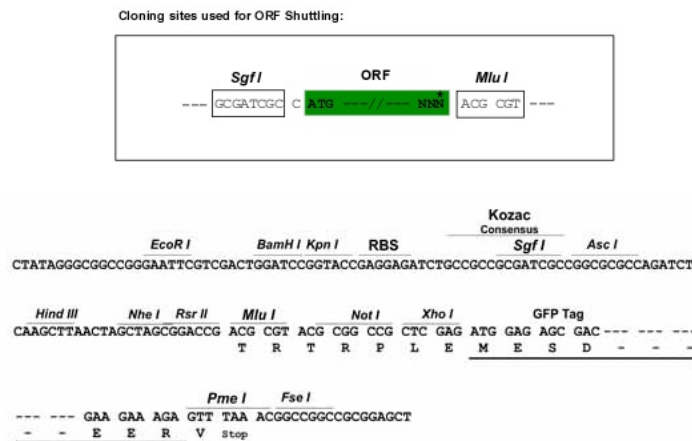
[View online »](#)

**Protein Sequence:** >Peptide sequence encoded by RG238169  
 Blue=ORF Red=Cloning site Green=Tag(s)

MSTHQFYRKYMCPTSMRAIRARYDPFLQTRHRIEQLKQLGHSVDKVEFIVMGGTFMALPEEYRDYFIRN  
 LHDALSGHTSNNIYEAVKYSERSLTKCIGITIEITRPDYCMKRHLSDMLTYGCTRLEIGVQSVYEDVARD  
 TNRGHTVKAVCESFHLAKDSGFKVVAHMPDLPNVGLERDIEQTEFFENPAFRPDGLKLYPTLVIRGT  
 GLYELWKSGRYKSYSPSDLVELVARILALVPPWTRVYRQRDIPMPLVSSGVEHGNLRELALARMKDLG  
 IQCRDVRTREVGIQEIIHKVRPYQVELVRRDYVANGGWETFLSYEDPDQDILIGLLRLRKCEETFRFE  
 LGGVSVIVRELHVGSSVVPSSRDPKFKHQGFGMLLMEEAERIAREEHSGSKIAVISGVGTRNYRKI  
 GYRLQGPYMKMLK  
 TRTRPLEMESDESGLPAMEIECRITGTLNGVEFELVGGEGTPEQGRMTNKMSTKGALTFSPYLLSHV  
 MGYGFYHFGTYPSGYENPFLHAINNGGYNTRIEKYEDGGVLHVSFSYRYEAGRVIGDFKVMGTGFPED  
 SVIFTDKIIIRSNATVEHLHPMGDNDLDGSFTRTFLRDGGYSSVVDSHMHFKSAIHPSILQNGGPMFA  
 FRRVEEDHSNTELGIVEYQHAFKTPDADAGEERV

**Restriction Sites:** SgfI-MluI

**Cloning Scheme:**



**ACCN:** NM\_001284225

**ORF Size:** 1284 bp

**OTI Disclaimer:** The molecular sequence of this clone aligns with the gene accession number as a point of reference only. However, individual transcript sequences of the same gene can differ through naturally occurring variations (e.g. polymorphisms), each with its own valid existence. This clone is substantially in agreement with the reference, but a complete review of all prevailing variants is recommended prior to use. [More info](#)

**OTI Annotation:** This clone was engineered to express the complete ORF with an expression tag. Expression varies depending on the nature of the gene.

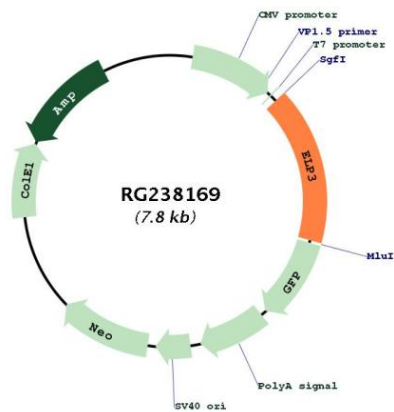
**Components:** The ORF clone is ion-exchange column purified and shipped in a 2D barcoded Matrix tube containing 10ug of transfection-ready, dried plasmid DNA (reconstitute with 100 ul of water).

**RefSeq:** [NM\\_001284225.1](#), [NP\\_001271154.1](#)

**RefSeq Size:** 3071 bp  
**RefSeq ORF:** 1287 bp  
**Locus ID:** 55140  
**UniProt ID:** [Q9H9T3](#)  
**Cytogenetics:** 8p21.1  
**MW:** 49.9 kDa

**Gene Summary:** ELP3 is the catalytic subunit of the histone acetyltransferase elongator complex, which contributes to transcript elongation and also regulates the maturation of projection neurons (Creppe et al., 2009 [PubMed 19185337]).[supplied by OMIM, Apr 2009]

**Product images:**



Circular map for RG238169