

Product datasheet for **RG238165**

SLC35B2 (NM_001286510) Human Tagged ORF Clone

Product data:

Product Type:	Expression Plasmids
Product Name:	SLC35B2 (NM_001286510) Human Tagged ORF Clone
Tag:	TurboGFP
Symbol:	SLC35B2
Synonyms:	PAPST1; SLL; UGTrel4
Mammalian Cell Selection:	Neomycin
Vector:	pCMV6-AC-GFP (PS100010)
E. coli Selection:	Ampicillin (100 ug/mL)
ORF Nucleotide Sequence:	>RG238165 representing NM_001286510. Blue=ORF Red=Cloning site Green=Tag(s)

```
GCTCGTTTAGTGAACCGTCAGAATTTGTAAATACGACTCACTATAGGGCGCCGGGAATTCGTCGACTG
GATCCGGTACCGAGGAGATCTGCCGCCGCGATCGCC
ATGGTGGGCAGTGGTGGTCTGGCTGCGTTCCCTCCCTAGGGGCAGGTGGGAGACTCCCGAAGCCCC
TCCGGAGTCATGGACCCAGCTATGGTCTTCCGATTTGTGGTGAATGCTGCTGGCTATGCCAGCTTTAT
GGTACCTGGTACCTCCTGGTGCAGTACTTCAGGCGGAAGAACTACCTGGAGACCGGGCCCTCGCTTT
CCCCTGGTAAAGCTTGTGTGTTGGCAATGAGCCCAAGGCCTCTGATGAGGTTCCCTGGCGCCCCGA
ACAGAGGGCGCAGAGACCACCCGATGTGGCAGGCCCTGAAGCTGCTCTTCTGTGCCACAGGGCTCCAG
GTGCTTATCTGACTTGGGGTGTGCTGCAGGAAAGAGTGATGACCCGCAGCTATGGGGCCACAGCCACA
TACCCGGGTGAGCGCTTTACGGACTCGCAGTTCCTGGTGCTAATGAACCGAGTGCTGGCACTGATTGTG
GCTGGCCTCTCCTGTGTTCTCTGCAAGCAGCCCCGGCATGGGGCACCCATGTACCGTACTCCTTTGCC
AGCCTGTCCAATGTGCTTAGCAGCTGGTGCCAATACGAAGCTCTTAAGTTCGTCAGTTCGCCACCCAG
GTGCTGGCCAAGGCCTCTAAGGTGATCCCTGTCATGCTGATGGGAAAGCTTGTGTCTCGGCGCAGCTAC
GAACACTGGGAGTACCTGACAGCCACCCTCATCTCCATTGGGGTCAAGTATGTTCTGCTATCCAGCGGA
CCAGAGCCCCGAGCTCCCAGCCACCACACTCTCAGGCCTCATTTACTGGCAGGTTATATTGCTTTT
GACAGCTTCACTCAAAGTGGCAGGATGCCCTGTTTGCCTATAAGATGTCATCGGTGCAGATGATGTTT
GGGGTCAATTTCTCCTGCCTCTTACAGTGGGCTCACTGCTAGAACAGGGGGCCCTACTGGAGGGA
ACCCGCTTCAATGGGGCGACACAGTGAAGTTTGTGCCCATGCCCTGCTACTCTCCATCTGCTCCGCATGT
GGCCAGCTCTTCACTTTTACACCATTGGGCAGTTTGGGGCTGCCGTCTTACCATCATCATGACCCCTC
CGCCAGGCCTTTGCCATCCTTCTTCTGCTTCTATGGCCACACTGTCACTGTGGTGGGAGGGCTG
GGGGTGGCTGTGGTCTTGTGCTCCCTCTGCTCAGAGTCTACGCGGGGGCCGTCTAAAGCAACGGGGA
AAGAAGGCTGTGCTGTTGAGTCTCCTGTGCAGAAAGTT
ACGCGTACGCGGCCGCTCGAG - GFP Tag - GTTTAAAC
```



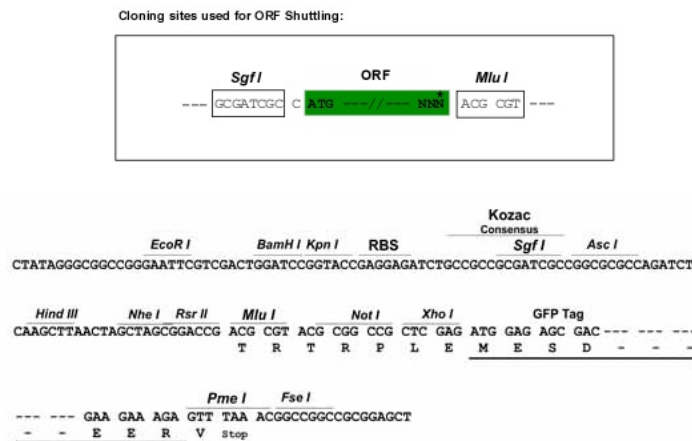
[View online »](#)

Protein Sequence: >Peptide sequence encoded by RG238165
 Blue=ORF Red=Cloning site Green=Tag(s)

MVGGSGAGCVPLPRGRWGDSRSPSGVMDPAMVLPICGECWLCQLYGTWLPAGAVLQAEELPGDRGLCF
 PLVKACVFGNEPKASDEVPLAPRTEAAETTPMWQALKLLFCATGLQVSYLTWGLQERVMTRSYGATAT
 SPGERFTDSQFLVLMNRVLAIVAGLSCVLCQPRHGAPMYRYSFASLSNVLSSWCQYEALKFVSFPTQ
 VLAKASKVIPVMLMGKLVSRRSYEHWEYL TATLISIGVSMFLLSSGPEPRSSPATTLSGLILLAGYIAF
 DSFTSNWQDALFAYKMSSVQMMFVNFSSCLFTVGSLLLEQGALLEGTRFMGRHSEFAAHALLLSICSAC
 GQLFIFYTIGQFGAAVFTIIMTLRQAFAILLSCLLYGHTVTVVGGGLGAVVFAALLLRVYARGRLKQRG
 KKAVPVESPVQKV
 TRTRPLEMESDESGLPAMEIECRITGTLNGVEFELVGGEGTPEQGRMTNKMSTKGALTFSPYLLSHV
 MGYGFYHFGTYPSGYENPFLHAINNGGYNTRIEKYEDGGVLHVSFSYRYEAGRVIGDFKVMGTGFPED
 SVIFTDKIIRSNATVEHLHPMGDNDLDGSFTRTFLRDGGYSSVVDSHMHFKSAIHPSILQNGGPMFA
 FRRVEEDHSNTELGIVEYQHAFKTPDADAGEERV

Restriction Sites: SgfI-MluI

Cloning Scheme:



ACCN: NM_001286510

ORF Size: 1281 bp

OTI Disclaimer: The molecular sequence of this clone aligns with the gene accession number as a point of reference only. However, individual transcript sequences of the same gene can differ through naturally occurring variations (e.g. polymorphisms), each with its own valid existence. This clone is substantially in agreement with the reference, but a complete review of all prevailing variants is recommended prior to use. [More info](#)

OTI Annotation: This clone was engineered to express the complete ORF with an expression tag. Expression varies depending on the nature of the gene.

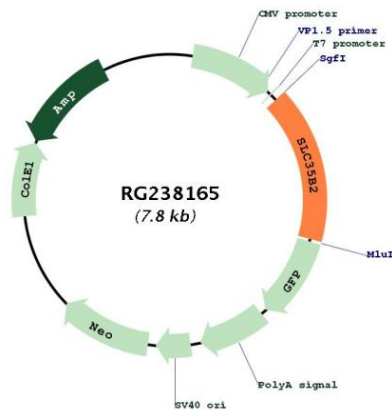
Components: The ORF clone is ion-exchange column purified and shipped in a 2D barcoded Matrix tube containing 10ug of transfection-ready, dried plasmid DNA (reconstitute with 100 ul of water).

RefSeq: [NM_001286510.2](#)

RefSeq Size: 2079 bp
RefSeq ORF: 1284 bp
Locus ID: 347734
UniProt ID: [Q8TB61](#)
Cytogenetics: 6p21.1
Protein Families: Druggable Genome, Transmembrane
MW: 46.8 kDa

Gene Summary: Sulfotransferases (e.g., SULT4A1; MIM 608359) use an activated form of sulfate, 3-prime-phosphoadenosine 5-prime-phosphosulfate (PAPS), as a common sulfate donor for sulfation of glycoproteins, proteoglycans, and glycolipids in the endoplasmic reticulum and Golgi apparatus. SLC35B2 is located in the microsomal membrane and transports PAPS from the cytosol, where it is synthesized, into the Golgi lumen (Kamiyama et al., 2003 [PubMed 12716889]).[supplied by OMIM, Mar 2008]

Product images:



Circular map for RG238165