

## Product datasheet for **RG238162**

### RUSC1 (NM\_001278228) Human Tagged ORF Clone

#### Product data:

Product Type:	Expression Plasmids
Product Name:	RUSC1 (NM_001278228) Human Tagged ORF Clone
Tag:	TurboGFP
Symbol:	RUSC1
Synonyms:	NESCA
Mammalian Cell Selection:	Neomycin
Vector:	pCMV6-AC-GFP (PS100010)
E. coli Selection:	Ampicillin (100 ug/mL)
ORF Nucleotide Sequence:	>RG238162 representing NM_001278228. Blue=ORF Red=Cloning site Green=Tag(s)

```
GCTCGTTT TAGTGAACCGTCAGAATTTTGT AATACGACTCACTATAGGGCGGCCGGGAATTCGTCGACTG
GATCCGGTACCGAGGAGATCTGCCGCC CGGATCGCC
ATGAGGAGAGTAATGGAGCTCCGCGGGGGTGC GGGAATGGTTGGCGGGAGGTGGCTGGGAGGTGTCTG
GAGGGATCTGGAGCCATCGGCATCGCGCCACCTCCAGGCCAGTTGGGTGATAGCCGGCTGAGCCCG
GATGTGGGGCACCTGGTGTGACCACCTCTGCCCGCCCTCCACGCCCTGGTGGCGGACGGGCTGAAG
CCTTCCGGAAGGACCTCATCCCGGGCAGCGCAGGAGCAGCCCTGGAGCGTGGTGGAGGCGTCGGTG
AAGCCAGGCTCCAGCACCCTCCCTTGAACCCTGTATAGCCAGGTCAGCCGTAGCCCCGCTGAGC
AGCAGCCGTAGCCGCTTCATGCCTTTATCCTGGGCCTCCTCAACACCAAGCAGTTGGAGCTGTGGTTT
TCCAGTCTCCAGGAAGATGCAGGCTGCTCCTCCTGTACCTGCCAACAGGATTTTTCTCCCTGGCC
CGCGGTGGTTGTCCCTCCCTGTCCACAGAGCTGCTGCTCCTGCTGCAGCCATTGTCGGTGTCACTTTC
CACCTGGACCTGCTCTTTGAGCACCACCACCTGCCCTGGGCCACCTCAGGCCCTGCCCTCCA
GGCCACCTCCAGCTCTGCAGCAGACTATGCAAGCCATGCTGCACTTTGGGGCCGGCTGGCCAGAGC
CTTCGGGGGACTTCAAGGAAGCTGCTTCCAGACCCTCTGACTCTCAAACCTTCCCACACCAGGGAGC
TGGTGGGAGCAGTTGACCAGGCCTCCCGGTCTATGCCTCTGGGGGCACTGAGGGCTTTCCTCTTCC
CGATGGGCACCGGGCGTCATGGGACTGCAGCTGAAGAAGGTGCACAGGAGAGACCCCTGCCACAGAT
GAGATGGCACCAGGCAGGGGCTCTGGTTGGGAAGACTATTTGGAGTGCCTGGGGCCCGCAGAAAAAT
GAGAATGGAGCCCTAAAGTCCAGGAGACCTAGCTGGCTGCCCGGACAGTGTGTGGCTCTT
GTGAAGCGGGGGGACCTCCCGAGATGCCTTCTCCTCAGGAGCTTGGGGCTCAGCACCCAGGATGGTG
CAAACCCATAGGGCAGTGC GGCTCTCTGTGATCACACTGCTGCAAGACCTGACCAGTTGAGCTCCGG
CGTGGGGAAGTGTGCTGCTCATCACCACAGTGGATGAGGACTGGCTCCGCTGTGGGCGGGATGGCATG
GAGGGTCTGGTGCCTGTGGGTATACCTCCCTTGTCTG
ACGCGTACGCGGCCGCTCGAG - GFP Tag - GTTTAAAC
```



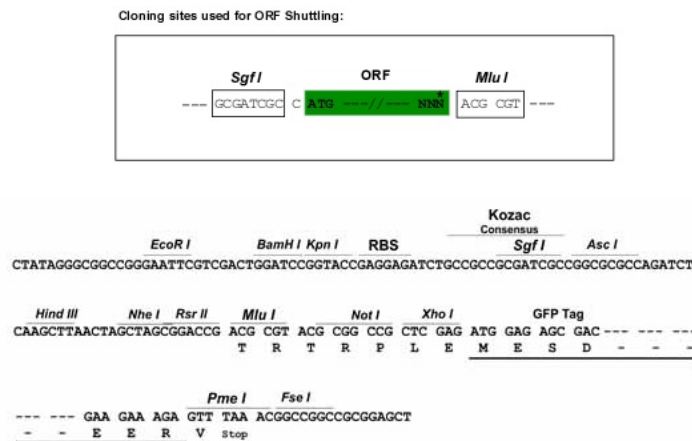
[View online »](#)

**Protein Sequence:** >Peptide sequence encoded by RG238162  
 Blue=ORF Red=Cloning site Green=Tag(s)

MRRVMELRGCGNGWREVAGRCLEGSLEPSASRHLQAQLGDSRLSPDVGHVLTTLCPALHALVADGLK  
 PFRKDLITGQRRSSPWSVVEASVKPGSSSTRSLGTLYSQVSRLAPLSSSRSRFHAFILGLLNTKQLELWF  
 SSLQEDAGLLSLLYLPTGFFSLARGGCPSTELLQPLSVLTFHLDLLFEHHHHLPLGPPQAPAPP  
 GPPPALQQTMQAMLHFGGRLAQLRGTSKEAASDPSPNLPTPGSWWEQLTQASRVYASGGTEGFPLS  
 RWAPGRHGTAEEGAQERPLPTDEMAPGRGLWLGRLFGVPGGPAENENGALKSRPSSWLPPTVSVLAL  
 VKRGAPPEMSPQLEASAPRMVQTHRAVRALCDHTAARPDQLSFRRGEVLRVITTVDEDWLRCDGDM  
 EGLVPVGYTSLVL  
 TRTRPLEMESDESGLPAMEIECRITGTLNGVEFELVGGGEGTPEQGRMTNKMSTKGALTFSPYLLSHV  
 MGYGFYHFGTYPSGYENPFLHAINNGGYNTRIEKYEDGGVLHVSFSYRYEAGRVIGDFKVMGTGFPED  
 SVIFTDKIIRSNATVEHLHPMGDNDLDGSFTRTFSLRDGGYSSVVDSHMHFKSAIHPSILQNGGPMFA  
 FRRVEEDHSNTELGIVEYQHAFKTPDADAGEERV

**Restriction Sites:** SgfI-MluI

**Cloning Scheme:**



**ACCN:** NM\_001278228

**ORF Size:** 1281 bp

**OTI Disclaimer:** The molecular sequence of this clone aligns with the gene accession number as a point of reference only. However, individual transcript sequences of the same gene can differ through naturally occurring variations (e.g. polymorphisms), each with its own valid existence. This clone is substantially in agreement with the reference, but a complete review of all prevailing variants is recommended prior to use. [More info](#)

**OTI Annotation:** This clone was engineered to express the complete ORF with an expression tag. Expression varies depending on the nature of the gene.

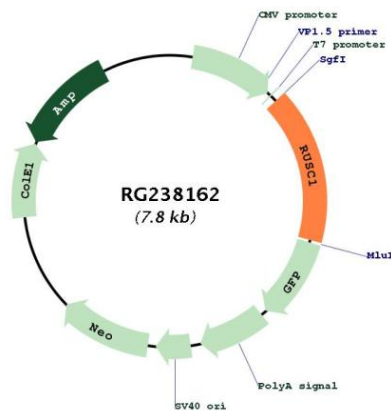
**Components:** The ORF clone is ion-exchange column purified and shipped in a 2D barcoded Matrix tube containing 10ug of transfection-ready, dried plasmid DNA (reconstitute with 100 ul of water).

**RefSeq:** [NM\\_001278228.1](#), [NP\\_001265157.1](#)

RefSeq Size: 2705 bp  
 RefSeq ORF: 1284 bp  
 Locus ID: 23623  
 UniProt ID: [Q9BVN2](#)  
 Cytogenetics: 1q22  
 MW: 46.6 kDa

**Gene Summary:** Putative signaling adapter which may play a role in neuronal differentiation. May be involved in regulation of NGF-dependent neurite outgrowth. Proposed to play a role in neuronal vesicular trafficking, specifically involving pre-synaptic membrane proteins. Seems to be involved in signaling pathways that are regulated by the prolonged activation of MAPK. Can regulate the polyubiquitination of IKBKG and thus may be involved in regulation of the NF-kappa-B pathway.[UniProtKB/Swiss-Prot Function]

### Product images:



Circular map for RG238162