

## Product datasheet for **RG238153**

### **PMPCA (NM\_001282946) Human Tagged ORF Clone**

#### Product data:

Product Type:	Expression Plasmids
Product Name:	PMPCA (NM_001282946) Human Tagged ORF Clone
Tag:	TurboGFP
Symbol:	PMPCA
Synonyms:	Alpha-MPP; CLA1; CPD3; INPP5E; MAS2; P-55; SCAR2
Mammalian Cell Selection:	Neomycin
Vector:	pCMV6-AC-GFP (PS100010)
E. coli Selection:	Ampicillin (100 ug/mL)
ORF Nucleotide Sequence:	>RG238153 representing NM_001282946. Blue=ORF Red=Cloning site Green=Tag(s)

```
GCTCGTTT TAGTGAACCGTCAGAATTTTGT AATACGACTCACTATAGGGCGCCGGGAATTCGTCTGACTG
GATCCGGTACCGAGGAGATCTGCCGCC CGGATCGCC
ATGAAGCGAAATACCTTAGTGGAAATGCTCACTTTTGGAAAAATTGGCATTTCGTCTACTGCTCGAT
TTGACAGCAAAGATGAAATCTGCTTACGTTGGAAAAGCATGGGGGTATCTGTGACTGCCAGACATCAA
GACACCACCATGTATGCTGTGTCTGCTGATAGCAAAGGCTTGGACACGGTGGTTGCCTTACTGGCTGAT
GTGTTCTGCAGCCCCGGCTAACAGATGAAGAAGTCGAGATGACGCGGATGGCGTCCAGTTTGAGCTG
GAGGACCTGAACCTGCGCCTGACCCAGAGCCACTTCTCACCGAGATGATTCATGAAGCGGCTTACAGG
GAGAACACAGTTGGCCTCCACCGTTTCTGCCCCACAGAAAACGTAGCAAAGATCAACCGAGAGGTGCTG
CATTCTACCTGAGGAACACTACACTCCCAGCCGATGGTGTGCTGGCCGGCGTGGGCGTGGAGCACGAG
CATCTGGTGGACTGTGCCCGGAAGTACCTCCTGGGGGTCCAGCCGGCCTGGGGGAGCGCAGAGGCCGTG
GATATTGACAGATCTGTGGCCAGTACACTGGGGGATTGCCAAGCTAGAAAAGAGACATGTCCAATGTC
AGCCTGGGCCCGACCCCATCCCCGAGCTCACGCACATCATGGTTGGACTGGAGAGCTGCTCCTTCTG
GAGGAGGACTTCATCCCCTTTGCAGTGTGAACATGATGATGGGCGGAGGTGGCTCCTTCTCGGCTGGT
GGGCCCGCAAGGGCATGTTCTCCAGGCTCTACCTCAACGTGCTCAACAGGCACCACTGGATGTATAAC
GCGACCTCCTACCACCACAGCTACGAGGACACTGGCCTCCTTTGCATCCATGCCAGCGCCGACCCAAGA
CAGGTTTCGAGAAATGGTAGAAATCATCACAAGGAGTTTATTTTAAATGGGCGGAACCGTGGACACGGTG
GAGCTGGAACGAGCCAAGACGCAGCTGACATCAATGCTCATGATGAACCTGGAATCCAGGCCTGTGATC
TTCAGAGGATGTGGGGAGGCAGGTGCTGGCCACTCGCTCCAGAAAAGCTGCCGCACGAGCTGTGCACGCTC
ATCCGCAACGTGAAGCCGGAAGATGTGAAGAGAGTCGCTTCTAAGATGCTCCGAGGGAAGCCGGCAGTG
GCCGCCCTGGGTGACCTGACTGACCTGCCACGTATGAGCACATCCAGACCGCCCTGTCGAGTAAGGAC
GGGCGCCTGCCAGGACGTACCGGCTCTTCCGG
ACGCGTACGCGGCCGCTCGAG - GFP Tag - GTTTAAAC
```



[View online »](#)

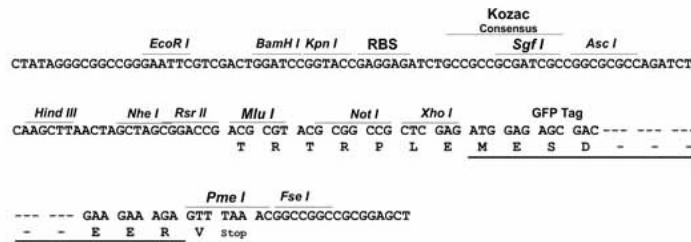
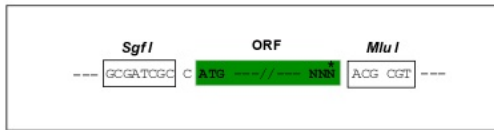
Protein Sequence: >Peptide sequence encoded by RG238153  
 Blue=ORF Red=Cloning site Green=Tag(s)

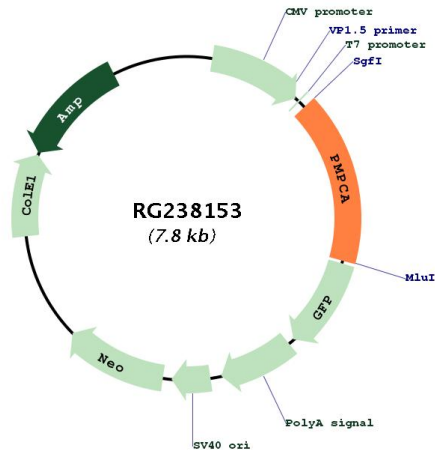
MKRNTLVELLTFWKNWHFRLLDLTAKMKFCLRWKSMGVSVTARHQDTTMYAVSADSKGLDVTVALLAD  
 VVLQPRLTDEEVEMTRMAVQFLEDLNLRPDPEPLLTEMIHEAAYRENTVGLHRFCPTENVAKINREVL  
 HSYLNRNYTPDRMVLAVGVEHEHLVDCARKYLLGVQPAWGSAAVDIRSVAQYTGGIKLERDMSNV  
 SLGPTPIPELTHIMVGLSECSFLEEDFIPFAVLNMMGGGGSFAGGPGKGMFSRLYLNLNRHHWYN  
 ATSYHHSYEDTGLLCIHASADPRQVREMYEIIITKEFILMGGTVDTVELERAKTQLTSMMLNLESRPVI  
 FEDVGRQVLATRSRKLPHCLCTLRNVKPEDVKRVASKMLRGKPAVAALGDLTDLPTYEHIQTALSSKD  
 GRLPRTYRLFR  
 TRTRPLEMESDESGLPAMEIECRITGTLNGVEFELVGGEGTPEQGRMTNKMSTKGALTFSPYLLSHV  
 MGYGFYHFGTYPSGYENPFLHAINNGGYNTRIEKYEDGGVLHVSFSYRYEAGRVIGDFKVMGTGFPED  
 SVIFTDKIIRSNATVEHLHPMGDNDLDGSFTRTFLRDGGYSSVVDSHMHFKSAIHPSILQNGGPMFA  
 FRRVEEDHSNTELGIVEYQHAFKTPDADAGEERV

Restriction Sites: SgfI-MluI

Cloning Scheme:

Cloning sites used for ORF Shutting:



**Plasmid Map:**


**ACCN:** NM\_001282946

**ORF Size:** 1275 bp

**OTI Disclaimer:** The molecular sequence of this clone aligns with the gene accession number as a point of reference only. However, individual transcript sequences of the same gene can differ through naturally occurring variations (e.g. polymorphisms), each with its own valid existence. This clone is substantially in agreement with the reference, but a complete review of all prevailing variants is recommended prior to use. [More info](#)

**OTI Annotation:** This clone was engineered to express the complete ORF with an expression tag. Expression varies depending on the nature of the gene.

**Components:** The ORF clone is ion-exchange column purified and shipped in a 2D barcoded Matrix tube containing 10ug of transfection-ready, dried plasmid DNA (reconstitute with 100 ul of water).

**RefSeq:** [NM\\_001282946.1](#), [NP\\_001269875.1](#)

**RefSeq Size:** 2180 bp

**RefSeq ORF:** 1278 bp

**Locus ID:** 23203

**UniProt ID:** [Q10713](#)

**Cytogenetics:** 9q34.3

**Protein Families:** Druggable Genome, Protease

**MW:** 48.6 kDa

**Gene Summary:** The protein encoded by this gene is found in the mitochondrion, where it represents the alpha subunit of a proteolytic heterodimer. This heterodimer is responsible for cleaving the transit peptide from nuclear-encoded mitochondrial proteins. Defects in this gene are a cause of spinocerebellar ataxia, autosomal recessive 2. [provided by RefSeq, Mar 2016]