

## Product datasheet for **RG238147**

### ZNF385C (NM\_001242704) Human Tagged ORF Clone

#### Product data:

Product Type:	Expression Plasmids
Product Name:	ZNF385C (NM_001242704) Human Tagged ORF Clone
Tag:	TurboGFP
Symbol:	ZNF385C
Mammalian Cell Selection:	Neomycin
Vector:	pCMV6-AC-GFP (PS100010)
E. coli Selection:	Ampicillin (100 ug/mL)
ORF Nucleotide Sequence:	>RG238147 representing NM_001242704. Blue=ORF Red=Cloning site Green=Tag(s)

```
GCTCGTTTAGTGAACCGTCAGAATTTTGTAAACGACTCACTATAGGGCGGCCGGGAATTCGTCGACTG
GATCCGGTACCGAGGAGATCTGCCGCCGCGATCGCC
ATGGGTCTGGCTGCAGGCCCGGCCCTCCGGCGCCCCAGCCCCCTGCTGGCCTCCCTGCCCTGCCACC
CGGCCTCTGCAGCCCCGCTGGACTTCAAGCACTTGCTCGCCTTCCACTTCAATGGCGCTGCCCGCTC
AGTCTCTTCCCAACTTCAGCACGATGGACCCGGTCCAGAAAGCTGTATCAGCCACACGTTTGGTGTC
CCCTCCCTCTGAAGAAGAAGCTGTTTATTCTGTAAACATCTGTACCTGAGGTTCAACTCAGCGAAC
CAGGCCGAGGCACATTATAAAGGCCACAACACGCCAGAAAACCAAGGCTGTCGAGGCTGCCAAGAGC
AAGCAGAGGCCACACACCCAGGCCAGGATGGGGCTGTAGTGTCCCAATCCCAACGCTGGCCAGTGGA
GCCCTGGAGAGCCACAGAGTAAAGTTCTGACGCCCTCCTCTTGGGCCCTCCACTCCAGCCACCACCA
ACTCCAGACCCTACATGCAGGGAGCCAGCCACTCAGAGCTCTTGATGCTGCCTCCTCATCCTTCTT
TCTCCTGCCACCTTGCTCCCCAGAGCCTGGGAGAGAGGCACCGGGCCTGAGCCAGCGGCAGCTGCC
GTGGGAAGCAGCATGAGTGGGAAGGCAGGAGTGAGAAGGGGCACCTCTACTGCCCCACGTGAAGGTG
ACAGTGAAGTCCGGCTCCAGCTTCAGGCTCACAAACAGGAGCCAAGCACCGGTGGATGATGGAAGGT
CAGCGAGGGGCTCCCGGAGGAGCCGGGGCCGCCGGTGTCCAGGGGAGGTGCCGGACACAAAGCCAAG
AGAGTCACAGGGGGCCGGGGCGGCCAGGGGCCAGCCCTGCCTTCCACTGTGCTCTCTGTGAGTCTC
CAGGTCAATTGAGACCAACTGAAGCAGCACATGAGCAGCAGGAGGCACAAAGACCGCCTGGCCGGG
AAGACCCCAAGCCCTCCAGCCAGCACAGCAAGCTGCAGAAGCACGCAGCGCTGGCTGTGAGTATCCTC
AAGTCTAAACTGGCCTTGAGAAGCAACTACCAAGACGTTGGCAGCCCGCTTCTGCCAGCCCGCTC
CCCACCGCAGCCACTGCCATCTGTGCTCTGCCAGGGCCCTGGCCCTCCGCCCTGCCCTACAGCAGCC
ACTACCCTCTTCCGGCTCCCATCTGGGCCAGCTCTGTTTCGCACCCAGCAGGAGCTGTCCGCCCT
GCCACAGGACCTATCGTCCTTGGCCCTTAT
ACGCGTACGCGGCCGCTCGAG - GFP Tag - GTTTAAAC
```



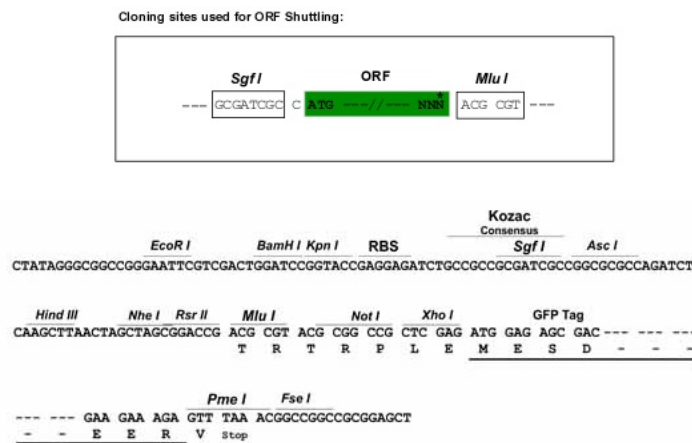
[View online »](#)

**Protein Sequence:** >Peptide sequence encoded by RG238147  
 Blue=ORF Red=Cloning site Green=Tag(s)

MGLAAGPASGAPSPLLASLPLPTRLPPLDFKHLLAFHFNGAAPLSLFPNFSTMDPVQKAVISHTFGV  
 PSPLKKKLFISCNICHLRFNSANQAEAHYKGHKHKARKLKAEEAAKSKQRPHTQAQDGAUVSPTLASG  
 APGEPQSKVPAAPPLGPPLQPPPTDPTCREPAHSELLDAASSSSSSSCPPCSPEPGREAPGPEAAAA  
 VGSMSGEGRSEKGHLYCPTCKVTVNSASQLQAHNTGAKHRWMMEGQRGAPRRSRGRPVSRGGAGHKAK  
 RVTGGRGRQGPSAFHCALCQLQVNSEQLKQHMSSRRHKDRLAGKTPKSSQHSKLQKHAALAVSIL  
 KSKLALQQLTKTLAARFLPSPLPTAATAICALPGLALRPAPTAATTLFPAPILGPALFRTPAGAVRP  
 ATGPIVLAPY  
 TRTRPLEMESDESGLPAMEIECRITGTLNGVEFELVGGEGTPEQGRMTNKMSTKGALTFSPYLLSHV  
 MGYGFYHFGTYPSGYENPFLHAINNGGYNTRIEKYEDGGVLHVSFSYRYEAGRVIGDFKVMGTGFPED  
 SVIFTDKIIIRSNATVEHLHPMGDNDLDGSFTRTFLRDGGYSSVVDSHMHFKSAIHPSILQNGGPMFA  
 FRRVEEDHSNTELGIVEYQHAFKTPDADAGEERV

**Restriction Sites:** SgfI-MluI

**Cloning Scheme:**



**ACCN:** NM\_001242704

**ORF Size:** 1272 bp

**OTI Disclaimer:** The molecular sequence of this clone aligns with the gene accession number as a point of reference only. However, individual transcript sequences of the same gene can differ through naturally occurring variations (e.g. polymorphisms), each with its own valid existence. This clone is substantially in agreement with the reference, but a complete review of all prevailing variants is recommended prior to use. [More info](#)

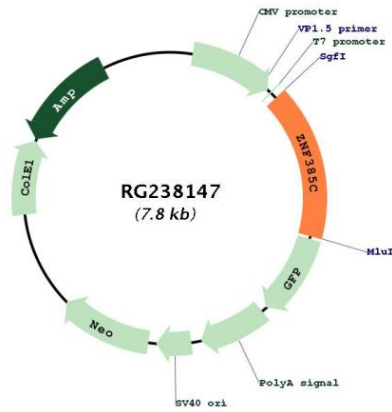
**OTI Annotation:** This clone was engineered to express the complete ORF with an expression tag. Expression varies depending on the nature of the gene.

**Components:** The ORF clone is ion-exchange column purified and shipped in a 2D barcoded Matrix tube containing 10ug of transfection-ready, dried plasmid DNA (reconstitute with 100 ul of water).

**RefSeq:** [NM\\_001242704.1](#), [NP\\_001229633.1](#)

RefSeq Size: 2596 bp  
 RefSeq ORF: 1275 bp  
 Locus ID: 201181  
 Cytogenetics: 17q21.2  
 MW: 44.7 kDa

**Product images:**



Circular map for RG238147