

Product datasheet for **RG238140**

SUV39H1 (NM_001282166) Human Tagged ORF Clone

Product data:

Product Type:	Expression Plasmids
Product Name:	SUV39H1 (NM_001282166) Human Tagged ORF Clone
Tag:	TurboGFP
Symbol:	SUV39H1
Synonyms:	H3-K9-HMTase 1; KMT1A; MG44; SUV39H
Mammalian Cell Selection:	Neomycin
Vector:	pCMV6-AC-GFP (PS100010)
E. coli Selection:	Ampicillin (100 ug/mL)
ORF Nucleotide Sequence:	>RG238140 representing NM_001282166. Blue=ORF Red=Cloning site Green=Tag(s)

```
GCTCGTTTGTGAACCGTCAGAATTTGTAAACGACTACTATAGGGCGCCGGGAATTCGTCGACTG
GATCCGGTACCGAGGAGATCTGCCGCCGCGATCGCC
ATGGTGGGGATGAGTCGCCTGAGAAATGACAGACTGGCTGACCCACTGACAGGCTGCAGCGTGTGTTGC
AAGTCTTCTTGAATCAGCTGCAGGACCTGTGCCGCTGGCCAAGCTCTCCTGCCCTGCCCTCGGTATC
TCTAAGAGGAACCTCTATGACTTTGAAGTCGAGTACCTGTGCGATTACAAGAAGTCCGCGAACAGGAA
TATTACCTGGTGAATGGCGTGGATATCCAGACTCAGAGAGCACCTGGGAGCCACGGCAGAATCTCAAG
TGTGTGCGTATCCTCAAGCAGTCCACAAGGACTTAGAAAGGGAGCTGCTCCGGCGCCACCACCGGTCA
AAGACCCCGGACCTGGACCAAGCTTGCCAACTACCTGGTGCAGAAGGCCAAGCAGAGGGCGGGCG
CTCCGTCGCTGGGAGCAGGAGCTCAATGCCAAGCGCAGCCATCTGGGACGCATCACTGTAGAGAATGAG
GTGGACCTGGACGGCCCTCCGCGGGCTTCGTGTACATCAATGAGTACCCTGTTGGTGAGGGCATCACC
CTCAACCAGGTGGCTGTGGGCTGCGAGTGCCAGGACTGTCTGTGGGCACCCACTGGAGGCTGCTGCCCG
GGGGCGTCACTGCACAAGTTTGCCTACAATGACCAGGGCCAGGTGCGGCTTCGAGCCGGGCTGCCATC
TACGAGTGCAACTCCCGCTGCCGCTGCGGCTATGACTGCCAAATCGTGTGGTACAGAAGGGTATCCGA
TATGACCTCTGCATCTTCCGCACGGATGATGGGCGTGGCTGGGGCGTCCGCACCTGGAGAAGATTCCG
AAGAACAGCTTCGTCATGGAGTACGTGGGAGAGATCATTACCTCAGAGGAGGCAGAGCGGGGGCCAG
ATCTACGACCGTCAGGGCGCCACCTACCTCTTTGACCTGGACTACGTGGAGGAGTGTACACCGTGGAT
GCCGCTACTATGGCAACATCTCCCACTTTGTCAACCACAGTTGTGACCCCAACCTGCAGGTGTACAAC
GTCTTCATAGACAACCTTGACGAGCGGCTGCCCGCATCGCTTTCTTTGCCACAAGAACCATCCGGGCA
GGCGAGGAGCTCACCTTTGATTACAACATGCAAGTGGACCCCGTGGACATGGAGAGCACCCGCATGGAC
TCCAACCTTTGGCCTGGCTGGGCTCCCTGGCTCCCTAAGAAGCGGGTCCGTATTGAATGCAAGTGTGG
ACTGAGTCTGCCGAAATACCTCTTC
ACGCGTACGCGGCCGCTCGAG - GFP Tag - GTTAAAC
```



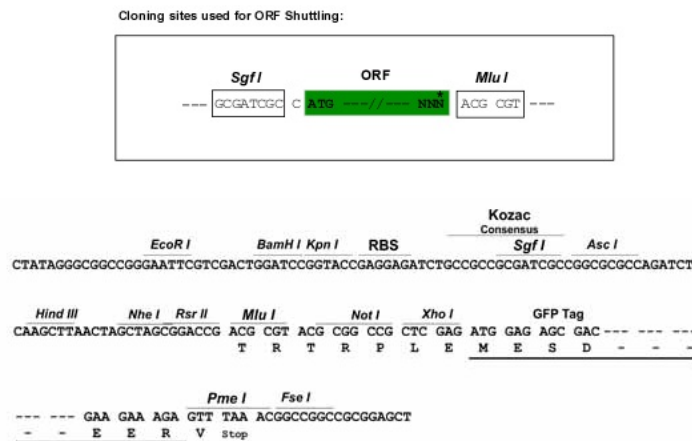
[View online »](#)

Protein Sequence: >Peptide sequence encoded by RG238140
 Blue=ORF Red=Cloning site Green=Tag(s)

MVGM SRLRNDRLADPLTGCSVCKSSWNQLQDL CRLAKLSCPALGISKRNL YDFEVEYLCDYKKIREQE
 YYLVKWRGYPDESESTWEP RQNLKCVRI LKQFHKDLERELLRRHRSKTPRHLDPSLANYL VQKAKQRRALRRWEQELNAKRSHLGRITVENEVDLDGPPRAFVYINEYRVGEGITLNQVAVGCECQDCLWAPTGGCCP
 GASLHKFA YNDQGVRLRAGLP IYECNSRCRCGYDCPNRVVQKGI RYDL CIFRTDDGRGWGVRTLEKIR
 KNSFVMEYVGEIITSEE AERRGQIYDRQATYLFDL DYVEDVYTVDAAYYGNISHFVNHSCDPNLQVYN
 VFIDNLDERLPRIAFFATRTIRAGEELTFDYNMQVDPVDMESTR MDSNFGLAGLPGSPKKRVRIECKCG
 TESC RYLF
 TRTRPLEMESDESGLPAMEIECRITGTLNGVEFELVGGEGTPEQGRMTNKMKSTKGALTFSPYLLSHV
 MGYGFYHFGTYP SGYENPFLHAINNGGYNTRIEKYEDGGVLHVSFSYRYEAGRVIGDFKVMGTGFPED
 SVIFTDKIIRSNATVEHLHPMGDNDLDGSFTRTFLRDGGYSSVVD SHMHFKSAIHPSILQNGGPMFA
 FRRVEEDHSNTELGIVEYQHAFKTPDADAGEERV

Restriction Sites: SgfI-MluI

Cloning Scheme:



ACCN: NM_001282166

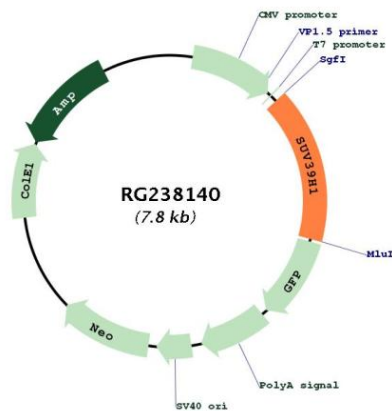
ORF Size: 1269 bp

OTI Disclaimer: Due to the inherent nature of this plasmid, standard methods to replicate additional amounts of DNA in E. coli are highly likely to result in mutations and/or rearrangements. Therefore, OriGene does not guarantee the capability to replicate this plasmid DNA. Additional amounts of DNA can be purchased from OriGene with batch-specific, full-sequence verification at a reduced cost. Please contact our customer care team at custsupport@origene.com or by calling 301.340.3188 option 3 for pricing and delivery.

The molecular sequence of this clone aligns with the gene accession number as a point of reference only. However, individual transcript sequences of the same gene can differ through naturally occurring variations (e.g. polymorphisms), each with its own valid existence. This clone is substantially in agreement with the reference, but a complete review of all prevailing variants is recommended prior to use. [More info](#)

OTI Annotation:	This clone was engineered to express the complete ORF with an expression tag. Expression varies depending on the nature of the gene.
Components:	The ORF clone is ion-exchange column purified and shipped in a 2D barcoded Matrix tube containing 10ug of transfection-ready, dried plasmid DNA (reconstitute with 100 ul of water).
RefSeq:	NM_001282166.1 , NP_001269095.1
RefSeq Size:	2999 bp
RefSeq ORF:	1272 bp
Locus ID:	6839
UniProt ID:	O43463
Cytogenetics:	Xp11.23
Protein Families:	Druggable Genome
Protein Pathways:	Lysine degradation
MW:	49.1 kDa
Gene Summary:	This gene encodes an evolutionarily-conserved protein containing an N-terminal chromodomain and a C-terminal SET domain. The encoded protein is a histone methyltransferase that trimethylates lysine 9 of histone H3, which results in transcriptional gene silencing. Loss of function of this gene disrupts heterochromatin formation and may cause chromosome instability. Alternative splicing results in multiple transcript variants. [provided by RefSeq, Aug 2013]

Product images:



Circular map for RG238140