

Product datasheet for **RG238131**

Transmembrane Protein 175 (TMEM175) (NM_001297423) Human Tagged ORF Clone

Product data:

Product Type:	Expression Plasmids
Product Name:	Transmembrane Protein 175 (TMEM175) (NM_001297423) Human Tagged ORF Clone
Tag:	TurboGFP
Symbol:	TMEM175
Synonyms:	hTMEM175
Mammalian Cell Selection:	Neomycin
Vector:	pCMV6-AC-GFP (PS100010)
E. coli Selection:	Ampicillin (100 ug/mL)
ORF Nucleotide Sequence:	>RG238131 representing NM_001297423. Blue=ORF Red=Cloning site Green=Tag(s)

```
GCTCGTTT TAGTGAACCGTCAGAATTTTGT AATACGACTCACTATAGGGCGCCGGGAATTCGTCGACTG
GATCCGGTACCGAGGAGATCTGCCGCC GCGATCGCC
ATGACCTTTCTCATCGTGACAGTGGCCTGGGCAGCACACACAAGGTTGTTCCAAGTTGTTGGGAAAAACA
GACGACACTTGCCTGCTCAACCTGGCCTGCATGATGACCATCACCTTCTGCCTTACACGTTTTTCG
TTAATGGTGACCTTCCCTGATGTGCCTCTGGGCATCTTCTTGTCTGTGTGTGTGATCGCCATTGGG
GTCGTGCAGGCACTGATTGTGGGTACGCATTCCACTTCCCGCACCTGCTGAGCCCGAGATCCAGCGC
TCTGCCACAGGGCTCTGTACCGACGACACGTCTGGGCATCGTCTCCAAGGCCGGCCCTGTGCTTT
GCAGCGGCATCTTCTCTCTTTTGTCCCCTTGCTTACCTGCTGATGGTGACTGTCATCCTCCTC
CCCTATGTGAGCAAGGTACCCGGCTGGTGACAGACAGGCTCCTGGGCCACAGGGAGCCCTCGGCTCAC
CCAGTGAAGTCTTCTCGTTTGACCTCCACGACCACTCAGCAAGGAGCGCTGGAAGCCTTCAGCGAC
GGAGTCTACGCCATCGTGGCCACGCTTCTCATCCTGGACATCTGCGAAGACAACGTCCCGGACCCCAAG
GATGTGAAGGAGAGGTTACGCGGCAGCCTCGTGGCCGCCCTGAGTGCGACCGGGCCGCGCTTCTGGCG
TACTTCGGCTCCTTCGCCACAGTGGGACTGCTGTGGTTCGCCACCACTCACTTCTCGCATGTGCGC
AAGGCCACGCGGCCATGGGCTGCTGAACACGCTCTCGCTGGCCTTCGTGGGTGGCCTCCCACTAGCC
TACCAGCAGACCTCGGCCTTCGCCCGCAGCCCCGCGATGAGCTGGAGCGCGTGCGTGTGAGTGCACC
ATCATCTTCTGGCCAGCATCTCCAGCTGGCCATGTGGACCAGGCGCTGCTGCACCAGGCGGAGACG
CTGCAGCCCTCGGTGTGGTTTGGCGGCCGGAGCATGTGCTCATGTTCCGAAGCTGGCGCTGTACCCC
TGTGCCAGCCTGTGGCCTTCGCCTCCACCTGCCTGCTGAGCAGGTTCACTGTGGGCATCTTCCACCTC
ATGCAGATCGCCGTGCCCTGCGCCTTCTGTTGCTGCGCCTGCTCGTGGGCTGGCCCTGGCCACCTCG
CGGGTCTGCGGGGCTCGCCCGCCGAACACCCCCGACCCCCACGGGCCAGGACGACCCACAG
TCCAGCTCCTCCCTGCCCTG
ACGCGTACGCGGCCGCTCGAG - GFP Tag - GTTAAAC
```



View online »

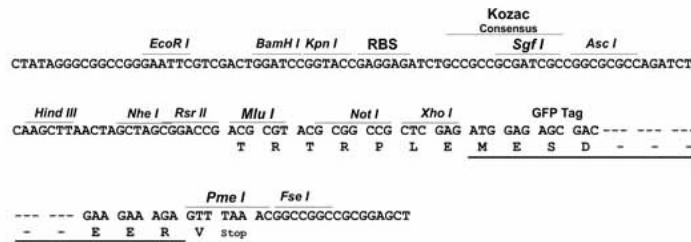
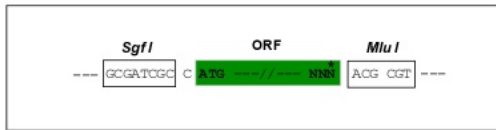
Protein Sequence: >Peptide sequence encoded by RG238131
 Blue=ORF Red=Cloning site Green=Tag(s)

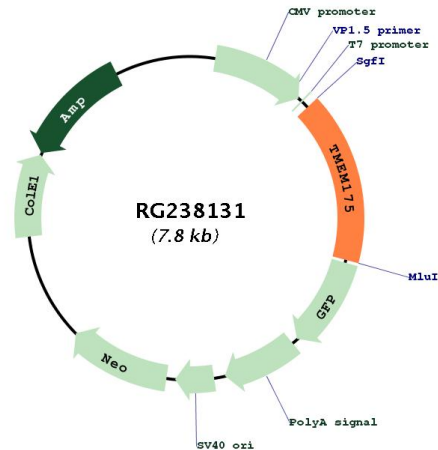
MTFLIVTVAWAHTRLFQVVGKTDLALLNLACMMITFLPYTFSLMVTFPDVPLGIFLFCVCVIAIG
 VVQALIVGYAFHFPHLLSPQIQRSAHRALYRRHVLGIVLQGPALCFAAAIFSLFFVPLSYLLMVTVILL
 PYYSKVTGWCRDRLLGHREPSAHPVEVFSFDLHEPLSKERVEAFSDGVYAI VATLLILDICEDNVPDPK
 DVKERFSGSLVAALSATGPRFLAYFGSFATVGLLWFAHHSFLHVRKATRAMGLLNTLSLAFVGGPLA
 YQQTSAFARQPRDELERVRVSCIIIFLASIFQLAMWTTALLHQAETLQPSVWFGGREHVL MFAKLALYP
 CASLLAFASTCLLSRFSVGI FHLMQIAVPCAFLLLRLLVGLALATLRVLRGLARPEHPPAPTGDQDPQ
 SQLLPAPC
 TRTRPLEMESDESGLPAMEIECRITGTLNGVEFELVGGEGTPEQGRMTNKMKSTKGALTFSPYLLSHV
 MGYGFYHFGTYPSTYENPFLHAINNGGYNTRIEKYEDGGVLHVSFSYRYEAGRVIGDFKVMGTGFPEP
 SVIFTDKIIRSNATVEHLHPMGDNDLDGSFTRTFLRDGGYSSVVD SHMHFKSAIHPSILQNGGPMFA
 FRRVEEDHSNTELGIVEYQHAFKTPDADAGEERV

Restriction Sites: SgfI-MluI

Cloning Scheme:

Cloning sites used for ORF Shutting:



Plasmid Map:


ACCN: NM_001297423

ORF Size: 1266 bp

OTI Disclaimer: The molecular sequence of this clone aligns with the gene accession number as a point of reference only. However, individual transcript sequences of the same gene can differ through naturally occurring variations (e.g. polymorphisms), each with its own valid existence. This clone is substantially in agreement with the reference, but a complete review of all prevailing variants is recommended prior to use. [More info](#)

OTI Annotation: This clone was engineered to express the complete ORF with an expression tag. Expression varies depending on the nature of the gene.

Components: The ORF clone is ion-exchange column purified and shipped in a 2D barcoded Matrix tube containing 10ug of transfection-ready, dried plasmid DNA (reconstitute with 100 ul of water).

RefSeq: [NM_001297423.2](#)

RefSeq Size: 2345 bp

RefSeq ORF: 1269 bp

Locus ID: 84286

Cytogenetics: 4p16.3

Protein Families: Transmembrane

MW: 47 kDa

Gene Summary: Organelle-specific potassium channel specifically responsible for potassium conductance in endosomes and lysosomes. Forms a potassium-permeable leak-like channel, which regulates luminal pH stability and is required for autophagosome-lysosome fusion. Constitutes the major lysosomal potassium channel.[UniProtKB/Swiss-Prot Function]