

Product datasheet for **RG238128**

ATE1 (NM_001288735) Human Tagged ORF Clone

Product data:

Product Type:	Expression Plasmids
Product Name:	ATE1 (NM_001288735) Human Tagged ORF Clone
Tag:	TurboGFP
Symbol:	ATE1
Mammalian Cell Selection:	Neomycin
Vector:	pCMV6-AC-GFP (PS100010)
E. coli Selection:	Ampicillin (100 ug/mL)
ORF Nucleotide Sequence:	>RG238128 representing NM_001288735. Blue=ORF Red=Cloning site Green=Tag(s)

```
GCTCGTTTAGTGAACCGTCAGAATTTTGTAAACGACTCACTATAGGGCGGCCGGGAATTCGTCGACTG
GATCCGGTACCGAGGAGATCTGCCGCCGCGATCGCC
ATGTTGAAATTTCTAGCTAAAGGGGAGGTTCCCAAAGGAAGTTGTGAGGATGAGCCCATGGATTCCACA
ATGGATGATGCTGTTGCCGGTGACTTTGCATTGATAAAATAAAGTGGATATACAGTGTGATCTTAAAAACA
CTCAGTGTGACATCAAAGAGAGTTTAGAGAGTGAAGGAAAAAATTCAAAGAAAGAAGAACCTCAGGAA
TTACTTCAGTACAAGATTTTCGTAGGAGAGAAGTTGGGCTCTGGTGAACCGTCACATTGAGTTAAAGTT
CACACAGTTCCTAAGCCAGGCAAAGGGGCTGATTTGAGTAAGCCTCCATGTCGAAAAGCAAAGGAAATC
CGAAAGAAAGGAAAAGTTAAACTAATGCAGCAGAACCAGCTGGAGAACTTGAGGGTTCCAGGCT
CAAGGTCACCCACCATCTTTGTTTCCACCAAAGGCTAAATCCAACCAGCCAAAATCACTCGAAGATTTA
ATTTTTGAGTCTTTACCAGAGAATGCATCACACAAGTTAGAGGTGAGGTTAGTACCTGTCTCCTTTGAG
GACCCAGAGTTCAAGTCGTCTTTAGCCAGTCTTTTCTTTGTATGTCAAGTATCAAGTGGCCATACAC
CAGGATCCACCCGATGAATGTGGGAAGACTGAGTTCACAAGATTCCTTTGCAGTTCACCCTTGAGGCA
GAGACTCCCCCTAATGGCCAGATTGTGGCTATGGCTCCTTTACCAGCAGTACTGGCTTGACGGAAG
ATCATTGCTGTGGGGTGATTGACATCCTCCAAACTGTGTATCATCTGTGATTTGACTACGATCCT
GATTATTCGTTTTGTCTTTGGGCTCTACTCTGCACTACGAGAAATGCTTTTACTAGGCAGTTCAT
GAGAAAATTTCAACTCAGCTATTATTATATGGGTTTCTACATTCATCATGTCCCAAGATGAAATAT
AAGGGTCAGTATAGACCTTCTGATTTGCTGTGCCCTGAGACATATGTTTGGGTACCCATTGAGCAATGC
CTGCCTTCACTTGAAAATCCAAGTACTGCCGTTTCAACCAGGCCAGAGCAGTGGATGAGGATCGC
AGTACGGAACCTGACCGATTGCAGGTGTTTCAAGAGAGCCATCATGCCTTACGGTGTATAAGAAA
CAGCAGAAAGACCAAGTGAGGAGGCTGCTGTTCTGCAGTACGCCAGCCTGGTGGGCAGAAAGTCTCC
GAGCGGATGCTGCTGTTCCAGAAAC
ACGCGTACGCGGCCGCTCGAG - GFP Tag - GTTTAAAC
```



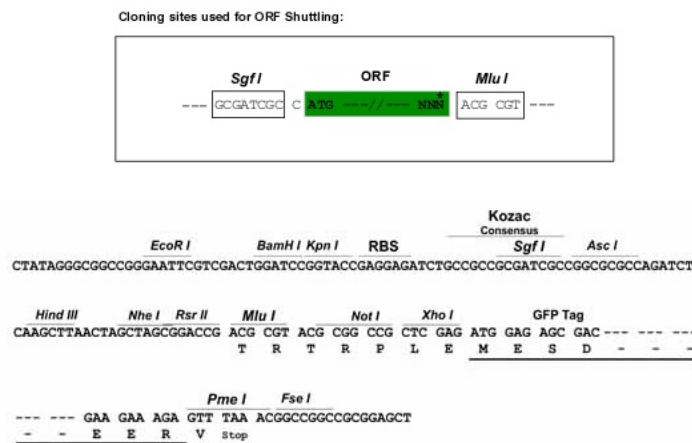
[View online »](#)

Protein Sequence: >Peptide sequence encoded by RG238128
 Blue=ORF Red=Cloning site Green=Tag(s)

MLKFLAKGEVPGKSCDEPMDSTMDDAVAGDFALINKLDIQCDLKTLSDDIKESLESEGKNSKEEPQE
 LLQSQDFVGEKLGSGEPSSVSVKVTVPKPGKADLSKPPCRKAKEIRKERKRLKLMQQNPAGELEGFQA
 QGHPPSLFPPKAKSNQPKSLEDLIFESLPENASHKLEVRVLPVSFEDPEFKSSFSQSFSLVYKYQVAIH
 QDPPDECCKTEFTRFLCSSLAEATPPNGPDCGYGFSHQYWL DGI IAVGVIDILPNCVSSVYL YYDP
 DYSFSLSLGVYSALREIAFTRQLHEKTSQLSYYMIFYIHSCPKMKYKQYRPSDLLCPETYVWPIEQC
 LPSLENSKYCRFNQDPEAVDEDRSTEPDRLQVFKRAIMPYGVYKQKQKDPSEEAVALQYASLVGQKCS
 ERMLLFRN
TRTRPLEMESDESGLPAMEIECRITGTLNGVEFELVGGEGTPEQGRMTNKMSTKGALTFSPYLLSHV
 MGYGFYHFGTYPGYNPFLHAINNGGYNTRIEKYEDGGVLHVSFSYRYEAGRVIGDFKVMGTGFPED
 SVIFTDKIIIRSNATVEHLHPMGDNDLDGSFTRTFLRDGGYSSVVD SHMHFKSAIHPSILQNGGPMFA
 FRRVEEDHSNTELGIVEYQHAFKTPDADAGEERV

Restriction Sites: SgfI-MluI

Cloning Scheme:



ACCN: NM_001288735

ORF Size: 1266 bp

OTI Disclaimer: The molecular sequence of this clone aligns with the gene accession number as a point of reference only. However, individual transcript sequences of the same gene can differ through naturally occurring variations (e.g. polymorphisms), each with its own valid existence. This clone is substantially in agreement with the reference, but a complete review of all prevailing variants is recommended prior to use. [More info](#)

OTI Annotation: This clone was engineered to express the complete ORF with an expression tag. Expression varies depending on the nature of the gene.

Components: The ORF clone is ion-exchange column purified and shipped in a 2D barcoded Matrix tube containing 10ug of transfection-ready, dried plasmid DNA (reconstitute with 100 ul of water).

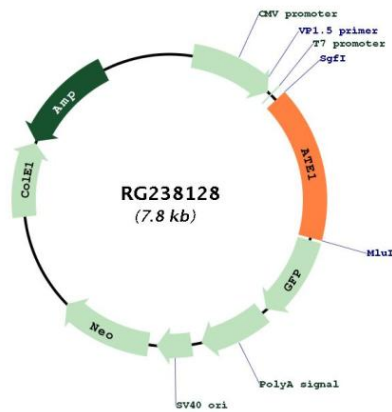
RefSeq: [NM_001288735.1](#), [NP_001275664.1](#)

RefSeq Size: 4803 bp
 RefSeq ORF: 1269 bp
 Locus ID: 11101
 UniProt ID: [O95260](#)

Cytogenetics: 10q26.13
 MW: 48.3 kDa

Gene Summary: This gene encodes an arginyltransferase, an enzyme that is involved in posttranslational conjugation of arginine to N-terminal aspartate or glutamate residues. Conjugation of arginine to the N-terminal aspartate or glutamate targets proteins for ubiquitin-dependent degradation. Alternative splicing results in multiple transcript variants. [provided by RefSeq, Dec 2013]

Product images:



Circular map for RG238128