

Product datasheet for **RG238124**

SLC35A2 (NM_001282651) Human Tagged ORF Clone

Product data:

Product Type:	Expression Plasmids
Product Name:	SLC35A2 (NM_001282651) Human Tagged ORF Clone
Tag:	TurboGFP
Symbol:	SLC35A2
Synonyms:	CDG2M; CDGX; UDP-Gal-Tr; UGALT; UGAT; UGT; UGT1; UGT2; UGTL
Mammalian Cell Selection:	Neomycin
Vector:	pCMV6-AC-GFP (PS100010)
E. coli Selection:	Ampicillin (100 ug/mL)
ORF Nucleotide Sequence:	>RG238124 representing NM_001282651. Blue=ORF Red=Cloning site Green=Tag(s)

```
GCTCGTTTGTAGTAACCGTCAGAATTTTGTAAACGACTCACTATAGGGCGCCGGGAATTCGTCGACTG
GATCCGGTACCGAGGAGATCTGCCGCCCGCATCGCC
ATGGCAGCGGTTGGGGCTGGTGGTTCCACCGCGCGCCCGGGCCAGGGGCGGTTTCCGCGGGTGCATTG
GAGCCGGGACCGCCAGTGCAGGTTGCTTCTCACTTGGGAGGAAGCCGAGGCGCGTGGCCAGGGTTTG
CCTCAGCCATTACCTGACACCTCAGTAAGGATTCCAGCTCACAGGCGCCTGAAGTACATATCCCTAGCT
GTGCTGGTGGTCCAGAATGCCTCCCTCATCTCAGCATCCGCTACGCCGCACGTTGCCAGGGGACCGC
TTCTTTGCCACCACTGCTGTGGTCATGGCGGAAGTGCTCAAAGGTCTCACCTGCCTGCTGCTCTTC
GCACAGAAGAGGGGTAACGTGAAGCACCTGGTTCTCTTCTCCATGAGGCTGCTCCTGGTGCAGTATGTG
GACACGCTCAAGCTCGCAGTGCCTCTCTCATCTACACCTTGCAAGTAACTCCAGTATGTTGCCATC
TCTAACCTACCAGCTGCCACTTTCCAGGTGACATACCAGCTGAAGATCCTGACCACAGCGCTGTTCTCC
GTGCTCATGCTGAATCGCAGCCTTTCCCGGCTGCAGTGGGCTCCCTGCTGCTCCTTCACTGGCGTC
GCCATTGTCCAGGCACAGCAAGCCGGTGGGGGAGGCCACGGCCACTGGATCAGAACCCTGGGGCAGGC
CTGGCAGCCGTCGTGGCTCCTGTCTCTCCTCCGGCTTCGCAGGTGTCTACTTTGAGAAGATCCTCAA
GGCAGCTCAGGCTCCGTGTGGCTGCGCAACCTGCAACTGGGCCTTTCGGCACAGCACTGGGCTGGTG
GGGCTCTGGTGGGCTGAGGGTACCGCGGTGGCCACCCGTGGTTTCTTTTTGGGTACACACCTGCTGC
TGGGGCGTGGTCAACCAGGCCTTCGGCGGGCTACTGGTGGCTGTGGTGTCAAGTACGCTGACAA
ATCCTCAAGGGCTTTGCCACCTCCCTGTCCATTGTGCTGTCCACTGTTGCCTCCATTTCGCTCTTTGGC
TTCCACGTGGACCAATTATTTGCCCTTGGCGCTGGACTCGTCATTGGTGTGTCTACCTCTACAGCCTT
CCCCGAGGTGCAGCCAAAGCCATAGCCTCTGCCTCTGCCTCCGCCTCCGGGCCCTGCGTTACCAGCAG
CCTCCCGGGCAGCCACCACCACCGCAGCTGTCTCCACCGTGGAGACCTCATCACGGAGCCCTTTCTG
CCAAGTCAGTGTGGTGAAG
ACGCGTACGCGGCCGCTCGAG - GFP Tag - GTTTAAAC
```



[View online »](#)

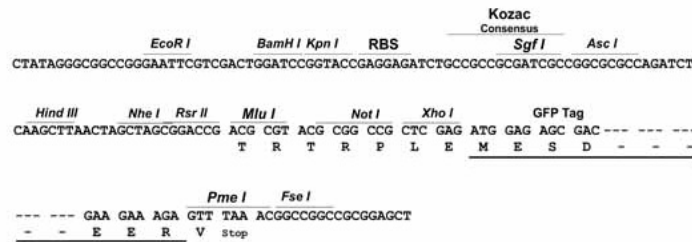
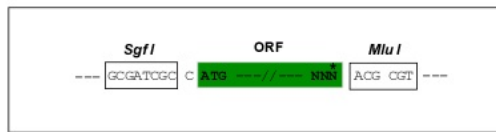
Protein Sequence: >Peptide sequence encoded by RG238124
 Blue=ORF Red=Cloning site Green=Tag(s)

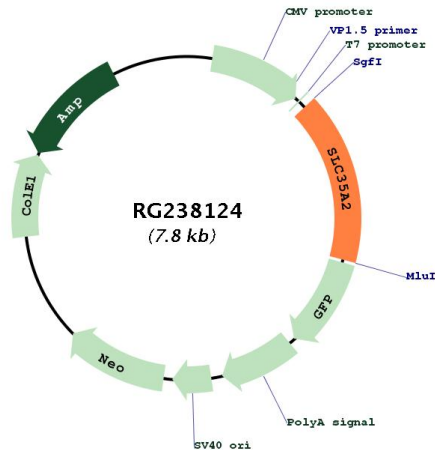
MAAVGAGGSTAAPGPGAVSAGALEPGTASAELLLTWEAEARGQGLPQPLPDTSVRIPAHRRLKYISLA
 VLVVQNASLILSIRYARTLPGDRFFATTAVVMAEVLKGLTCLLLLFAQKRGVVKHLVFLHEAVLVQYV
 DTLKLAVPSLIYTLQNNLQYVAISNLPAAATFQVTYQLKILTTALFVLMMLNRSLSRLQWASLLLLFTGV
 AIVQAQQAGGGGPRPLDQNPAGLA AAVVASCLSSGFAGVYFEKILKSSGGSVWLRNLQLGLFGTALGLV
 GLWAAEGTAVATRGFFGYTPAVWGVVLNQAFGLLVAVVVKYADNILKGFATSLSIVLSTVASIRLFG
 FHVDPFLFALGALVIGAVYLYSLPRGAAKAIASASASASGPCVHQPPGQPPPPQLSSHRGDLITEPFL
 PKSVLVK
 TRTRPLEMESDESGLPAMEIECRITGTLNGVEFELVGGGEGTPEQGRMTNKMSTKGALTFSPYLLSHV
 MGYGFYHFGTYPSGYENPFLHAINNGGYNTRIEKYEDGGVLHVSFSYRYEAGRVIGDFKVMGTGFPED
 SVIFTDKIIRSNATVEHLHPMGDNDLDGSFTRTFLRDGGYSSVVDSHMHFKSAIHPSILQNGGPMFA
 FRRVEEDHSNTELGIVEYQHAFKTPDADAGEERV

Restriction Sites: SgfI-MluI

Cloning Scheme:

Cloning sites used for ORF Shutting:



Plasmid Map:


ACCN: NM_001282651

ORF Size: 1263 bp

OTI Disclaimer: The molecular sequence of this clone aligns with the gene accession number as a point of reference only. However, individual transcript sequences of the same gene can differ through naturally occurring variations (e.g. polymorphisms), each with its own valid existence. This clone is substantially in agreement with the reference, but a complete review of all prevailing variants is recommended prior to use. [More info](#)

OTI Annotation: This clone was engineered to express the complete ORF with an expression tag. Expression varies depending on the nature of the gene.

Components: The ORF clone is ion-exchange column purified and shipped in a 2D barcoded Matrix tube containing 10ug of transfection-ready, dried plasmid DNA (reconstitute with 100 ul of water).

RefSeq: [NM_001282651.2](#)

RefSeq Size: 2703 bp

RefSeq ORF: 1266 bp

Locus ID: 7355

UniProt ID: [P78381](#)

Cytogenetics: Xp11.23

Protein Families: Transmembrane

MW: 44.6 kDa

Gene Summary:

This gene encodes a member of the nucleotide-sugar transporter family. The encoded protein is a multi-pass membrane protein. It transports UDP-galactose from the cytosol into Golgi vesicles, where it serves as a glycosyl donor for the generation of glycans. Mutations in this gene cause congenital disorder of glycosylation type II_m (CDG2M). Multiple alternatively spliced transcript variants encoding distinct isoforms have been found for this gene. [provided by RefSeq, Oct 2014]