

Product datasheet for **RG238123**

WSB2 (NM_001278557) Human Tagged ORF Clone

Product data:

Product Type:	Expression Plasmids
Product Name:	WSB2 (NM_001278557) Human Tagged ORF Clone
Tag:	TurboGFP
Symbol:	WSB2
Synonyms:	SBA2
Mammalian Cell Selection:	Neomycin
Vector:	pCMV6-AC-GFP (PS100010)
E. coli Selection:	Ampicillin (100 ug/mL)
ORF Nucleotide Sequence:	>RG238123 representing NM_001278557. Blue=ORF Red=Cloning site Green=Tag(s)

```
GCTCGTTTGTAGTAACCGTCAGAATTTTGTAAACGACTCACTATAGGGCGCCGGGAATTCGTCGACTG
GATCCGGTACCGAGGAGATCTGCCGCCGCGATCGCC
ATGCGGGTAGACAGGGAGAGCAGGTTTCTCAGGGGACGGGGACAGGCGAGGCTGTCCGCTAGAGGAA
CCGCTGCTGTGGCCGAAGTCAAGCCCGGGCGCCACCAGTTTATTGGAAAGTCCAGCTGTGAAACC
TGGAGCGTCGCCCTTCTCCCAGATGGCTCCTGGTTTGGTTGGTCTCAAGGACTGCATCGTCAAAGT
ATCCCCTGGCCGTTGGAGGAGCAGTTTCATCCCTAAAGGGTTTGAAGCCAAAAGCCGAAGTAGAAAAAT
GAGACGAAAGGGCGGGCAGCCAAAAGAGAAGACGCTGGACTGTGGTCAGATTGTCTGGGGCTGGCC
TTCAGCCCGTGGCCTTCCCACCCAGCAGGAAGCTCTGGGCACGCCACCACCCCAAGTGCCCGATGTC
TCTTGCCCTGGTTCTTGTACGGGACTCAACGATGGGCAGATCAAGATCTGGGAGGTGCAGACAGGGCTC
CTGCTTTTGAATCTTCCGGCCACCAAGATGTCGTGAGAGATCTGAGCTTACACCCAGTGGCAGTTTG
ATTTTGGTCTCCGCGTACGGGATAAGACTCTTCGCATCTGGGACCTGAATAAACACGGTAAACAGATT
CAAGTGTATCGGGCCACCTGCAGTGGGTTTACTGCTGTTCCATCTCCCAGACTGCAGCATGCTGTGC
TCTGCAGCTGGAGAGAAGTCGGTCTTCTATGGAGCATGAGGTCCTACACGTTAATTCGGAAGCTAGAG
GGCCATCAAAGCAGTGTGTCTTGTGACTTCTCCCCGACTCTGCCCTGCTTGCACGGCTTCTTAC
GATACCAATGTGATTATGTGGGACCCCTACACCGGCGAAAGGCTGAGGTCACTCCACCACACCCAGTT
GACCCCGCATGGATGACAGTGACGTCCACATTAGCTCACTGAGATCTGTGTGCTCTCTCCAGAAGGC
TTGTACCTTGCCACGGTGGCAGATGACAGACTCCTCAGGATCTGGGCCCTGGAAGTGAAGAACTCCCAT
GCATTTGCTCCTATGACCAATGGGCTTTGCTGCACATTTTTTCCACATGGTGGAGTCATTGCCACAGGG
ACAAGAGATGGCCACGTCCAGTTCTGGACAGCTCCTAGGGTCTGTCTCACTGAAGCACTTATGCCGG
AAAGCCCTTGAAGTTTCTAACAACCTACCAAGTCTAGCACTGCCAATCCCAAGAAAATGAAAGAG
TTCCTCACATACAGGACTTTT
ACGCGTACGCGGCCGCTCGAG - GFP Tag - GTTTAAAC
```



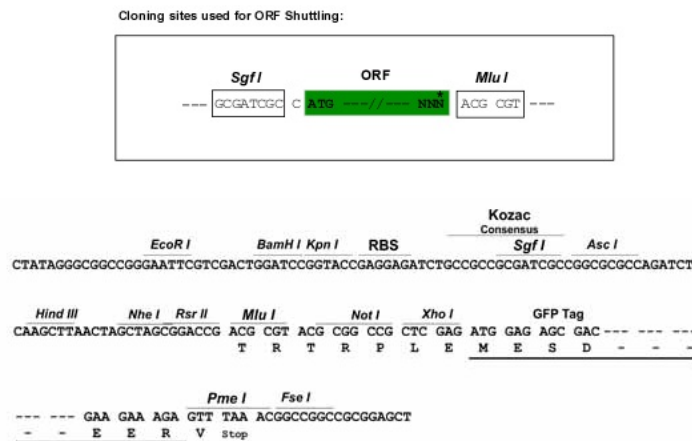
[View online »](#)

Protein Sequence: >Peptide sequence encoded by RG238123
 Blue=ORF Red=Cloning site Green=Tag(s)

MRVDRESRFLRGTGTGEAVAVEEPLLLAELKPRPHQFDWKSSCETWSVAFSPDGSWFAWSQGHCIVKL
 IPWPLEEQFIPKGF EAKSRSSKNETKGRGSPKEKTLDCGQIVWGLAFSPWSPPSRKLWARHHPQVPDV
 SCLVLATGLNDGQIKIWEVQTGLLLLNL SGHQDVVRDL SFTPSGSLILV SASRDKTLRIWDLNKHGKQI
 QVLSGHLQWVYCCSI SPDCSMLCSAAGEKSVFLWSMRSYTLIRKLEGHQSSVVSDFSPDSALLVTASY
 DTNVIMWDPYTGRLRSLHHTQVDPAMDDSDVHISLRSVCF SPEGLYLATVADDRLLRIWALELKTPI
 AFAPMTNGLCCTFFPHGGVIATGTRDGHVQFWTAPRVLSSLKHLCRKALRSFLTYYQLALPIPKMKKE
 FLTYRTF
 TRTRPLEMESDESGLPAMEIECRITGTLNGVEFELVGGEGTPEQGRMTNKMKSTKGALTFSPYLLSHV
 MGYGFYHFGTYPSGYENPFLHAINNGGYNTRIEKYEDGGVLHVSFSYRYEAGRVIGDFKVMGTGFPED
 SVIFTDKIIRSNATVEHLHPMGDNDLDGSFTRTFLRDGGYSSVVD SHMHFKSAIHPSILQNGGPMFA
 FRRVEEDHSNTELGIVEYQHAFKTPDADAGEERV

Restriction Sites: SgfI-MluI

Cloning Scheme:



ACCN: NM_001278557

ORF Size: 1263 bp

OTI Disclaimer: The molecular sequence of this clone aligns with the gene accession number as a point of reference only. However, individual transcript sequences of the same gene can differ through naturally occurring variations (e.g. polymorphisms), each with its own valid existence. This clone is substantially in agreement with the reference, but a complete review of all prevailing variants is recommended prior to use. [More info](#)

OTI Annotation: This clone was engineered to express the complete ORF with an expression tag. Expression varies depending on the nature of the gene.

Components: The ORF clone is ion-exchange column purified and shipped in a 2D barcoded Matrix tube containing 10ug of transfection-ready, dried plasmid DNA (reconstitute with 100 ul of water).

RefSeq: [NM_001278557.1](#), [NP_001265486.1](#)

RefSeq Size: 2798 bp

RefSeq ORF: 1266 bp

Locus ID: 55884

UniProt ID: [Q9NYS7](#)

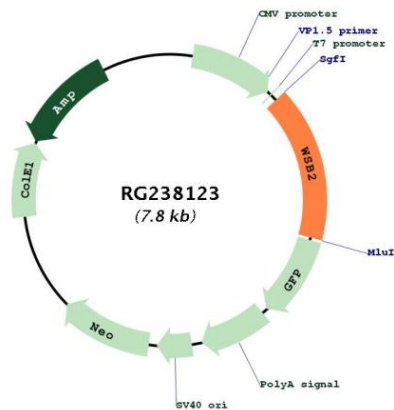
Cytogenetics: 12q24.23

Protein Families: Druggable Genome

MW: 47.6 kDa

Gene Summary: This gene encodes a member of the WD-protein subfamily. The encoded protein contains five WD-repeats spanning most of the protein and an SOCS box in the C-terminus. The SOCS box may act as a bridge between specific substrate-binding domains and E3 ubiquitin protein ligases. Three transcript variants encoding different isoforms have been found for this gene. [provided by RefSeq, Jun 2013]

Product images:



Circular map for RG238123