

Product datasheet for **RG238109**

Somatostatin Receptor 3 (SSTR3) (NM_001278687) Human Tagged ORF Clone

Product data:

Product Type:	Expression Plasmids
Product Name:	Somatostatin Receptor 3 (SSTR3) (NM_001278687) Human Tagged ORF Clone
Tag:	TurboGFP
Symbol:	Somatostatin Receptor 3
Synonyms:	SS-3-R; SS3-R; SS3R; SSR-28
Mammalian Cell Selection:	Neomycin
Vector:	pCMV6-AC-GFP (PS100010)
E. coli Selection:	Ampicillin (100 ug/mL)
ORF Nucleotide Sequence:	>RG238109 representing NM_001278687. Blue=ORF Red=Cloning site Green=Tag(s)

```
GCTCGTTTAGTGAACCGTCAGAATTTTGTAAACGACTACTATAGGGCGCCGGGAATTCGTCGACTG
GATCCGGTACCGAGGAGATCTGCCGCCGCGATCGCC
ATGGACATGCTTCATCCATCATCGGTGTCCACGACCTCAGAACCTGAGAATGCCTCCTCGGCCCTGGCCC
CCAGATGCCACCCTGGGCAACGTGTGGCGGGCCCAAGCCCGGCAGGGCTGGCCGTCACTGGCGTTCTG
ATCCCCCTGGTCTACCTGGTGGTGTGCGTGGTGGGCTGCTGGGTAACCTCGCTGGTCATCTATGTGGTC
CTGCGGCACACGGCCAGCCCTTCACTCACCACGTCATACCTCAACCTGGCGCTGGCCGACGAGCTC
TTCATGCTGGGGTGCCTTCTGGCCGCCAGAACGCCCTGTCTACTGGCCCTTCGGCTCCCTCATG
TGCCGCCTGGTCATGGCGGTGGATGGCATCAACCAGTTACCAGCATATTCTGCCTGACTGTCATGAGC
GTGGACCCTACCTGGCGTGGTACATCCACCCGCTCGGCCCGCTGGCGCACAGCTCCGGTGGCCCGC
ACGGTCAGCGCGGCTGTGTGGTGGCTCAGCCGTGGTGGTGTGCCCGTGGTGGTCTTCTCGGGAGTG
CCCCGCGCATGAGCACCTGCCACATGCAGTGGCCCGAGCCGGCGGGCCTGGCGAGCCGGCTTCATC
ATCTACACGGCCGCACTGGGCTTCTTCGGGCCGCTGCTGGTCACTGCTCTGCTACCTGCTCATCGTG
GTGAAGGTGCGCTCAGCTGGCGCCGGGTGTGGCACCCTCGTCCAGCGCGCGGGCGCTCCGAACGC
AGGGTCACGCGCATGGTGGTGGCCGTGGTGGCGCTCTTCGTGCTCTGCTGGATGCCCTTCTACGTGCTC
AACATCGTCAACGTGGTGTGCCACTGCCAACCCATCCTTTATGGCTTCTCTACCCTCAAGCAGCA
GCGTGCCCTATGCCAACAGCTGTGCCAACCCATCCTTTATGGCTTCTCTACCCTCAAGCAGCA
GGCTTCCGAGGGTCTGCTGCGGCCCTCCCGCGTGTGCGCAGCCAGGAGCCACTGTGGGCCCCCG
GAGAAGACTGAGGAGGAGGATGAGGAGGAGGATGGGAGGAGAGCAGGGAGGGGGCAAGGGGAAG
GAGATGAACGGCCGGTCAAGCAGATCACGACGCTGGCACCAGCGGGCAGGAGCGGCCCGCCAGCAGA
GTGGCCAGCAAGGAGCAGCAGCTCTACCCCAAGAGGCTTCCACTGGGGAGAAGTCCAGCAGCATGCGC
ATCAGCTACCTG
ACGCGTACGCGGCCGCTCGAG - GFP Tag - GTTAAAC
```



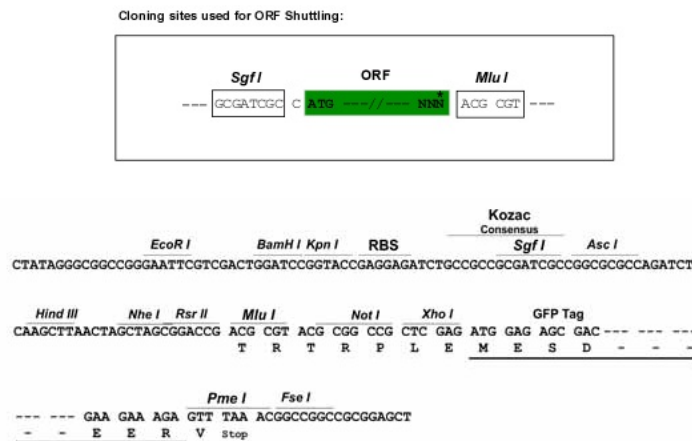
[View online »](#)

Protein Sequence: >Peptide sequence encoded by RG238109
 Blue=ORF Red=Cloning site Green=Tag(s)

MDMLHPPSSVSTTSEPENASSAWPPDATLGNVSAGPSPAGLAVSGVLIPLVYL VVCVVGLLGNSLVIYVV
 LRHTASPSVTNVYILNLALADELFMLGLPFLAAQNALSYWPFGLMCRVMVAVDGINQFTSIFCLTVMS
 VDRYLAVVHPTRSARWRTAPVARTVSAAVWVASAVVVL PVVVFSGVPRGMSTCHMQWPEAAAWRAGFI
 IYTAALGFFGPLLVIICLYLLIVVKVRSAGRRVWAPSCQRRRRSERRVTRMVVAVALFVLCWMPFYVL
 NIVNVVCPLEPPAFGLYFLVVALPYANSCANPILYGFLSYRFKQGFRRVLLRPSRRVRSQEPTVGPP
 EKTEEEDEEEEDGEEESREGGKGMNGRVSQITQPGTSGQERPPSRVASKEQQLLPQEASTGEKSSTMR
 ISYL
 TRTRPLEMESDESGLPAMEIECRITGTLNGVEFELVGGEGTPEQGRMTNKMSTKGALTFSPYLLSHV
 MGYGFYHFGTYPSTYENPFLHAINNGGYNTRIEKYEDGGVLHVSFSYRYEAGRVIGDFKVMGTGFPED
 SVIFTDKIIRSNATVEHLHPMGDNDLDGSFTRTFLRDGGYSSVVD SHMHFKSAIHPSILQNGGPMFA
 FRRVEEDHSNTELGIVEYQHAFKTPDADAGEERV

Restriction Sites: SgfI-MluI

Cloning Scheme:



ACCN: NM_001278687

ORF Size: 1254 bp

OTI Disclaimer: The molecular sequence of this clone aligns with the gene accession number as a point of reference only. However, individual transcript sequences of the same gene can differ through naturally occurring variations (e.g. polymorphisms), each with its own valid existence. This clone is substantially in agreement with the reference, but a complete review of all prevailing variants is recommended prior to use. [More info](#)

OTI Annotation: This clone was engineered to express the complete ORF with an expression tag. Expression varies depending on the nature of the gene.

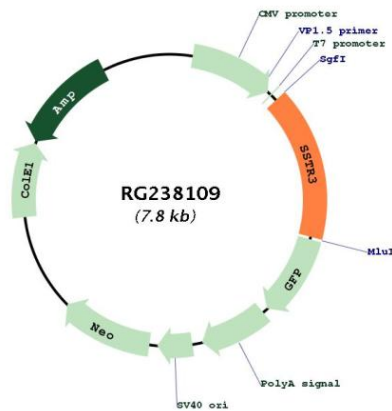
Components: The ORF clone is ion-exchange column purified and shipped in a 2D barcoded Matrix tube containing 10ug of transfection-ready, dried plasmid DNA (reconstitute with 100 ul of water).

RefSeq: [NM_001278687.2](#), [NP_001265616.1](#)

RefSeq Size: 3764 bp
RefSeq ORF: 1257 bp
Locus ID: 6753
UniProt ID: [P32745](#)
Cytogenetics: 22q13.1
Protein Families: Druggable Genome, GPCR, Transmembrane
Protein Pathways: Neuroactive ligand-receptor interaction
MW: 45.8 kDa

Gene Summary: This gene encodes a member of the somatostatin receptor protein family. Somatostatins are peptide hormones that regulate diverse cellular functions such as neurotransmission, cell proliferation, and endocrine signaling as well as inhibiting the release of many hormones and other secretory proteins. Somatostatin has two active forms of 14 and 28 amino acids. The biological effects of somatostatins are mediated by a family of G-protein coupled somatostatin receptors that are expressed in a tissue-specific manner. Somatostatin receptors form homodimers and heterodimers with other members of the superfamily as well as with other G-protein coupled receptors and receptor tyrosine kinases. This protein is functionally coupled to adenylyl cyclase. Alternate splicing results in multiple transcript variants. [provided by RefSeq, Jul 2013]

Product images:



Circular map for RG238109