

Product datasheet for **RG238102**

ACBD5 (NM_001301253) Human Tagged ORF Clone

Product data:

Product Type:	Expression Plasmids
Product Name:	ACBD5 (NM_001301253) Human Tagged ORF Clone
Tag:	TurboGFP
Symbol:	ACBD5
Synonyms:	RDLKD
Mammalian Cell Selection:	Neomycin
Vector:	pCMV6-AC-GFP (PS100010)
E. coli Selection:	Ampicillin (100 ug/mL)
ORF Nucleotide Sequence:	>RG238102 representing NM_001301253. Blue=ORF Red=Cloning site Green=Tag(s)

```
GCTCGTTTGTAGTAACCGTCAGAATTTTGTAAACGACTCACTATAGGGCGCCGGGAATTCGTCGACTG
GATCCGGTACCGAGGAGATCTGCCGCCGCGATCGCC
ATGACCAAAGAGGAAGCCATGATTGCATATGTTGAAGAAATGAAAAAGATTATTGAAACTATGCCAATG
ACTGAGAAAGTTGAAGAATTGCTGCGTGTATAGGTCCATTTTATGAAATTGTCGAGGACAAAAAGAGT
GGCAGGAGTTCTGATATAACCTCAGATCTTGGTAATGTTCTCACTTCTACTCCAAACGCCAAAACCGTT
AATGGTAAAGCTGAAAGCAGTGACAGTGGAGCCGAGTCTGAGGAAGAAGAGGCCCAAGAAGAAGTGAAA
GGAGCAGAACAAAGTGATAATGATAAGAAAATGATGAAGAAGTCAGCAGACCATAAGAATTTGGAAGTC
ATTGTCACCTAATGGCTATGATAAAGATGGCTTTGTTTCAGGATATACAGAATGACATTCATGCCAGTCT
TCCCTGAATGGCAGAAGCACTGAAGAAGTAAAGCCATTGATGAAAACCTGGGGCAAACCTGAAAAATCT
GCTGTTTGCATTCACCAAGATATAAATGATGATCATGTTGAAGATGTTACAGGAATTCAGCATTTGACA
AGCGATTACAGACAGTGAAGTTTACTGTGATTCTATGGAACAATTTGGACAAGAAGAGTCTTTAGACAGC
TTTACGTCCAACAATGGACCATTCAGTATTACTTGGGTGGTCATTCCAGTCAACCCATGGAAAAATCT
GGATTTTCGTGAAGATATCAAGTACCTCCTGGAATGGCAACATTGGGAATATGCAGGTGGTTGCAGTT
GAAGGAAAAGGTGAAGTCAAGCATGGAGGAGAAGATGGCAGGAATAACAGCGGAGCACCACCCGGGAG
AAGCGAGGCGGAGAACTGACGAATCTCTAATGTTAGAAGAGGAAGAGGACATAGGATGCAACACTTG
AGCGAAGGAACCAAGGGCCGCGAGTGGGAAGTGGAGGTGATGGGAGCGCTGGGGCTCCGACAGAGGG
TCCCAGGCAGCCTCAATGAGCAGATCGCCCTCGTGTGATGAGACTGCAGGAGGACATGCAGAATGTC
CTTCAGAGACTGCAGAACTGGAACGCTGACTGCTTTGCAGGCAAAAATCATCAACATCAACATTGCAG
ACTGCTCCTCAGCCACCTCACAGAGACCATCTTGGTGGCCCTTCGAGATGTCTCCTGGTGTGCTAACG
TTTGCCATCATATGGCCTTTTATTGCACAGTGGTGGTGTATTTACTATCAAAGAAGGAGAAGAAAA
CTGAAC
ACGCGTACGCGGCCGCTCGAG - GFP Tag - GTTTAAAC
```



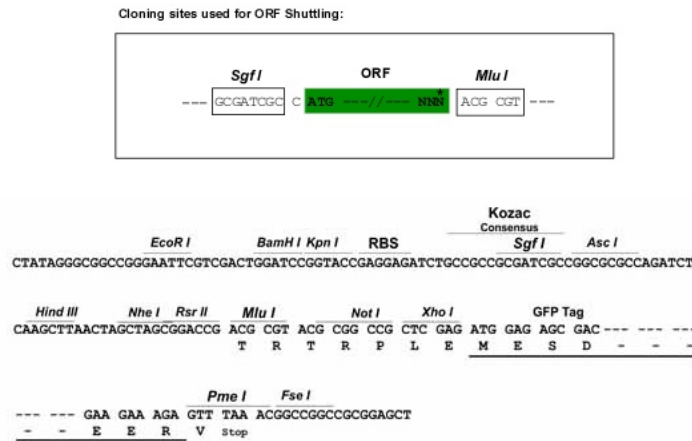
[View online »](#)

Protein Sequence: >Peptide sequence encoded by RG238102
 Blue=ORF Red=Cloning site Green=Tag(s)

MTKEEAMIAYVEEMKKIIETMPMTEKVEELLRVIGPFYEIVEDKKSGRSSDITSDLGNVLTSTPNAKTV
 NGKAESSDSGAEESEEEAQEEVKGAEQSDNDKMMKKSADHKNLEIVTNGYDKDGFVQDIQNDIHASS
 SLNGRSTEEVKPIDENLQGTGKSAVCIHQDINDDHVEDVTGIQHLTSDSDSEVYCDSEMFQGEESLDS
 FTSNNGPFQYYLGGHSSQPMENSGFREDIQVPPGNGNIGNMQVVAVEGKGEVKHGGEDGRNNSGAPHRE
 KRGGGETDEF SNVRRGRGRHMQHLSEGTKGRQVGSGGDGERWGS DRGSRGSLNEQIALVLMRLQEDMQNV
 LQRLQKLETLTALQAKSSTLQTPAQPTSQRPSWPFEMSPGLTFAI IWPFIAQWL VYLYYQRRRRK
 LN
 TRTRPLEMESDESGLPAMEIECRITGTLNGVEFELVGGEGTPEQGRMTNKMSTKGALTFSPYLLSHV
 MGYGFYHFGTYPSTYENPFLHAINNGGYNTRIEKYEDGGVLHVSFSYRYEAGRVIGDFKVMGTGFPED
 SVIFTDKIIRSNATVEHLHPMGDNDLDGSFTRTFSLRDGGYSSVVD SHMHFKSAIHPSILQNGGPMFA
 FRRVEEDHSNTELGIVEYQHAFKTPDADAGEERV

Restriction Sites: SgfI-MluI

Cloning Scheme:



ACCN: NM_001301253

ORF Size: 1248 bp

OTI Disclaimer: The molecular sequence of this clone aligns with the gene accession number as a point of reference only. However, individual transcript sequences of the same gene can differ through naturally occurring variations (e.g. polymorphisms), each with its own valid existence. This clone is substantially in agreement with the reference, but a complete review of all prevailing variants is recommended prior to use. [More info](#)

OTI Annotation: This clone was engineered to express the complete ORF with an expression tag. Expression varies depending on the nature of the gene.

Components: The ORF clone is ion-exchange column purified and shipped in a 2D barcoded Matrix tube containing 10ug of transfection-ready, dried plasmid DNA (reconstitute with 100 ul of water).

RefSeq: [NM_001301253.2](#)

RefSeq Size: 3740 bp
 RefSeq ORF: 1251 bp
 Locus ID: 91452

UniProt ID: [Q5T8D3](#)

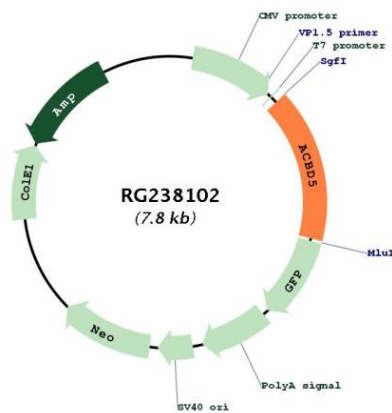
Cytogenetics: 10p12.1

Protein Families: Transmembrane

MW: 46.7 kDa

Gene Summary: This gene encodes a member of the acyl-Coenzyme A binding protein family, known to function in the transport and distribution of long chain acyl-Coenzyme A in cells. This gene may play a role in the differentiation of megakaryocytes and formation of platelets. A related protein in yeast is involved in autophagy of peroxisomes. A mutation in this gene has been associated with autosomal dominant thrombocytopenia. Alternative splicing results in multiple transcript variants. [provided by RefSeq, Jul 2014]

Product images:



Circular map for RG238102