

Product datasheet for **RG238101**

ACBD5 (NM_001301252) Human Tagged ORF Clone

Product data:

Product Type:	Expression Plasmids
Product Name:	ACBD5 (NM_001301252) Human Tagged ORF Clone
Tag:	TurboGFP
Symbol:	ACBD5
Synonyms:	RDLKD
Mammalian Cell Selection:	Neomycin
Vector:	pCMV6-AC-GFP (PS100010)
E. coli Selection:	Ampicillin (100 ug/mL)
ORF Nucleotide Sequence:	>RG238101 representing NM_001301252. Blue=ORF Red=Cloning site Green=Tag(s)

```
GCTCGTTT TAGTGAACCGTCAGAATTTTGT AATACGACTCACTATAGGGCGGCCGGGAATTCGTCGACTG
GATCCGGTACCGAGGAGATCTGCCGCC GCGATCGCC
ATGACCAAAGAGGAAGCCATGATTGCATATGTTGAAGAAATGAAAAAGATTATTGAAACTATGCCAATG
ACTGAGAAAGTTGAAGAATTGCTGCGTGT CATAGGTCCATTTTATGAAATTGTCGAGGACAAAAAGAGT
GGCAGGAGTTCTGATATAACCTCAGATCTTGTAATGTTCTCACTTCTACTCCAAACGCCAAAACCGTT
AATGGTAAAGCTGAAAGCAGTGACAGTGGAGCCGAGTCTGAGGAAGAAGAGGCCCAAGAAGAAGTGAAA
GGAGCAGAACAAGTGATAATGATAAGAAAATGATGAAGAAGTCAGCAGACCATAAGAATTTGGAAGTC
ATTGTCACTAATGGCTATGATAAAGATGGCTTTGTT CAGGATATACAGAATGACATTCATGCCAGTTCT
TCCCTGAATGGCAGAAGCACTGAAGAAGTAAAGCCCATTTGATGAAAACCTGGGGCAAACCTGAAAAATCT
GCTGTTTGCATTCACCAAGATATAAATGATGATCATGTTGAAGATGTTACAGGAATTCAGCATTTGACA
AGCGATTCCAGACAGTGAAGTTTACTGTGATTCTATGGAACAATTTGGACAAGAAGAGTCTTTAGACAGC
TTTACGTCCAACAATGGACCATTTCAAGTACTTGGGTGGTCATTCCAGTCAACCCATGGAAAAATCT
GGATTTGCGTGAAGATATCAAGTACCTCCTGGAATGGCAACATTGGGAATATGCAGGTGGTTGCAGTT
GAAGGAAAAGGTGAAGTCAAGCATGGAGGAGAAGATGGCAGGAATAACAGCGGAGCACCACCCGGGAG
AAGCGAGGCGGAGAAAAC TGACGAATCTCTAATGTTAGAAGAGGAAGAGGACATAGGATGCAACACTTG
AGCGAAGGAACCAAGGGCCGGCAGGTGGGAAGTGGAGGTGATGGGAGCGCTGGGGCTCCGACAGAGGG
TCCCGAGGCAGCCTCAATGAGCAGATCGCCCTCGTGTGATGAGACTGCAGGAGGACATGCAGAATGTC
CTTCAGAGACTGCAGAAAAC TGGAACGCTGACTGCTTTGCAGGCAAAAATCATCAACATCAACATTGCAG
ACTGCTCCTCAGCCACCTCACAGAGACCATCTTGGTGGCCCTTCGAGATGTCTCCTGGTGTGCTAACG
TTTGCCATCATATGGCCTTTTATTGCACAGTGGTGGTGTATTTACTATCAAAGAAGGAGAAGAAAA
CTGAAC
ACGCGTACGCGGCCGCTCGAG - GFP Tag - GTTTAAAC
```



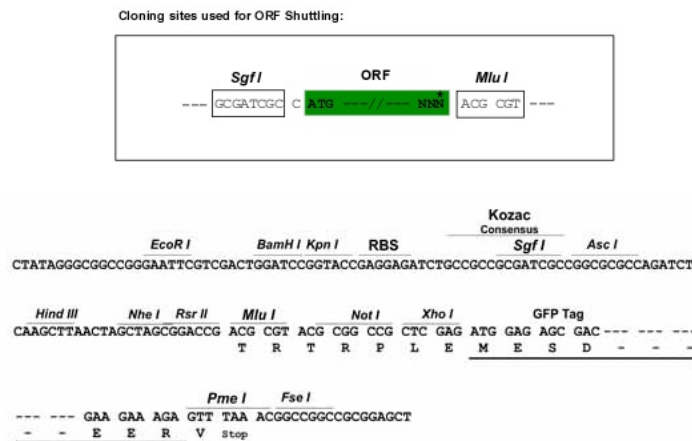
[View online »](#)

Protein Sequence: >Peptide sequence encoded by RG238101
 Blue=ORF Red=Cloning site Green=Tag(s)

MTKEEAMIAYVEEMKKIIETMPMTEKVEELLRVIGPFYEIVEDKKSGRSSDITSDLGNVLTSTPNAKTV
 NGKAESSDSGAEESEEEAQEEVKGAEQSDNDKMMKKSADHKNLEIVTNGYDKDGFVQDIQNDIHASS
 SLNGRSTEEVKPIDENLQGTGKSAVCIHQDINDDHVEDVTGIQHLTSDSDSEVYCDSEMFQGEESLDS
 FTSNNGPFQYYLGGHSSQPMENSGFREDIQVPPGNGNIGNMQVVAVEGKGEVKHGGEDGRNNSGAPHRE
 KRGGGETDEF SNVRRGRGRHMQHLSEGTKGRQVGSGGDGERWGS DRGSRGSLNEQIALVLMRLQEDMQNV
 LQRLQKLETLTALQAKSSTLQTPAQPTSQRPSWPFEMSPGLTFAIIWPFIAQWL VYLYYQRRRRK
 LN
 TRTRPLEMESDESGLPAMEIECRITGTLNGVEFELVGGEGTPEQGRMTNKMSTKGALTFSPYLLSHV
 MGYGFYHFGTYPSTYENPFLHAINNGGYNTRIEKYEDGGVLHVSFSYRYEAGRVIGDFKVMGTGFPED
 SVIFTDKIIRSNATVEHLHPMGDNDLDGSFTRTFLRDGGYSSVVD SHMHFKSAIHPSILQNGGPMFA
 FRRVEEDHSNTELGIVEYQHAFKTPDADAGEERV

Restriction Sites: SgfI-MluI

Cloning Scheme:



ACCN: NM_001301252

ORF Size: 1248 bp

OTI Disclaimer: The molecular sequence of this clone aligns with the gene accession number as a point of reference only. However, individual transcript sequences of the same gene can differ through naturally occurring variations (e.g. polymorphisms), each with its own valid existence. This clone is substantially in agreement with the reference, but a complete review of all prevailing variants is recommended prior to use. [More info](#)

OTI Annotation: This clone was engineered to express the complete ORF with an expression tag. Expression varies depending on the nature of the gene.

Components: The ORF clone is ion-exchange column purified and shipped in a 2D barcoded Matrix tube containing 10ug of transfection-ready, dried plasmid DNA (reconstitute with 100 ul of water).

RefSeq: [NM_001301252.2](#)

RefSeq Size: 4064 bp
 RefSeq ORF: 1251 bp
 Locus ID: 91452

UniProt ID: [Q5T8D3](#)

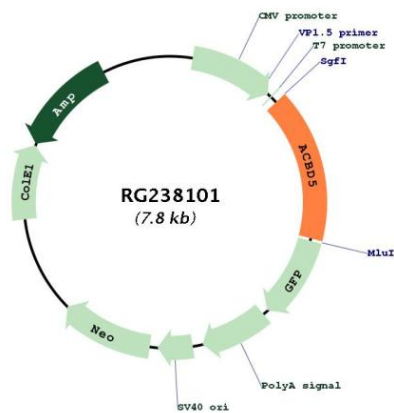
Cytogenetics: 10p12.1

Protein Families: Transmembrane

MW: 46.7 kDa

Gene Summary: This gene encodes a member of the acyl-Coenzyme A binding protein family, known to function in the transport and distribution of long chain acyl-Coenzyme A in cells. This gene may play a role in the differentiation of megakaryocytes and formation of platelets. A related protein in yeast is involved in autophagy of peroxisomes. A mutation in this gene has been associated with autosomal dominant thrombocytopenia. Alternative splicing results in multiple transcript variants. [provided by RefSeq, Jul 2014]

Product images:



Circular map for RG238101