

Product datasheet for **RG238076**

RFX3 (NM_001282117) Human Tagged ORF Clone

Product data:

Product Type:	Expression Plasmids
Product Name:	RFX3 (NM_001282117) Human Tagged ORF Clone
Tag:	TurboGFP
Symbol:	RFX3
Mammalian Cell Selection:	Neomycin
Vector:	pCMV6-AC-GFP (PS100010)
E. coli Selection:	Ampicillin (100 ug/mL)
ORF Nucleotide Sequence:	>RG238076 representing NM_001282117. Blue=ORF Red=Cloning site Green=Tag(s)

```
GCTCGTTTAGTGAACCGTCAGAATTTTGTAAACGACTCACTATAGGGCGGCCGGGAATTCGTCGACTG
GATCCGGTACCGAGGAGATCTGCCGCCGCGATCGCC
ATGCAGACATCAGAGACTGGGTCCGACACAGGCTCGACAGTGACCTTACAAAATCTGTGGCTAGTCAA
GCAGCAGTGCCTACGCAGGTGGTACAGCAAGTACCAGTACAACAACAGGTACAGCAGGTACAGACTGTG
CAGCAGGTACAACATGTCTATCCCGCTCAGGTGCAGTATGTGGAAGGAAGCGATACTGTCTATACCAAT
GGAGCAATCCGAACAACAACGTATCCTTACACAGAGACACAGATGTACAGCCAAAATACTGGAGGGAAAT
TACTTTGATACTCAAGGGAGTTCCGCCAGGTGACTACCGTGGTCTCATCCACAGTATGGTGGCACT
GGTGGGATTCAGATGGGCGTCACAGGAGGACAACATCAGCAGCTCTGGAGGAACCTATCTGATCGGC
AACTCAATGGAGAATTCTGGTCACTCAGTGACACACACAACCTCGGGCCTCCCAGCGACAATTGAAATG
GCGATTGAGACGCTGCAAAAGTCTGACGGTCTGTCCACTCACAGAAGCTCTTTCTCAACAGCCATCTC
CAGTGGCTGTTGGACAATTATGAGACAGCAGAAGGAGTGAGCCTTCCCAGAAGCACTCTGTACAACCAC
TACCTTCGACACTGTCAGGAACACAAAAGTGGACCCAGTCAATGCTGCCTCTTTGGAAAATTAATAAGA
TCAATTTTATGGGGCTACGAACCAGGAGATTGGGCACTAGAGGAACTCCAAATACCACTACTATGGG
ATTCGTGTCAAGCCAGATTCCCCTTAAATCGTCTGCAAGAAGACATGCAGTATATGGCTATGAGACAA
CAACCCATGCAACAGAAACAAAGGTACAAGCCTATGCAGAAAGTGGATGGGGTTCAGATGGTTTCACA
GGAAGTGGTCAACAGACAGGCACATCTGTTGAGCAAAGTGAATTGCCAAAGCCAACATCATCAACAG
TTTTTAGATGCATCTCGAGCACTCCAGAGTTTGGAGAAGTTGAAATCTTCTCTGCCAGATGGTACT
ACCTTTGAGGATATCAAGTCACTGCAGAGTCTTTATAGAGAGCACTGTGAGGCAATATTGGACGTTGTT
GTGAATCTTCAATTTAGCCTGATAGAAAATTGTGGCAAACATCTGGCGCTATTCTCCCTACTCCA
ACTGATGGCACTACCAATACCGAATCGAGGTCAGAATCAACATCTTTTCAATTCATTTTCATGGC
ACGCGTACGCGGCCGCTCGAG - GFP Tag - GTTTAAAC
```



[View online »](#)

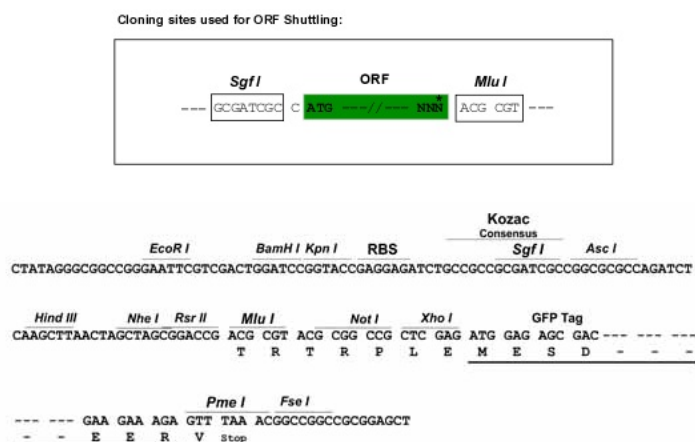
Protein Sequence: >Peptide sequence encoded by RG238076
Blue=ORF Red=Cloning site Green=Tag(s)

```

MQTSETGSDTGSTVTLQTSVASQAAPTQVVQVPVQQVQVQVQTQQVQHVYPAQVQYVEGSDTVYTN
GAI R T T T Y P Y T E T Q M Y S Q N T G G N Y F D T Q G S S A Q V T T V S S H S M V G T G G I Q M G V T G G Q L I S S S G G T Y L I G
NSMENSNGHSVHTHTRASPATIEMAIETLQKSDGLSTHRSSLNLSHLQWLLDNYETAEGVSLPRSTLYNH
YL R H C Q E H K L D P V N A A S F G K L I R S I F M G L R T R R L G T R G N S K Y H Y Y G I R V K P D S P L N R L Q E D M Q Y M A M R Q
Q P M Q Q K R Y K P M Q K V D G V A D G F T G S G Q Q T G T S V E Q T V I A Q S Q H H Q Q F L D A S R A L P E F G E V I S S L P D G T
T F E D I K S L Q S L Y R E H C E A I L D V V V N L Q F S L I E K L W Q T F W R Y S P S T P T D G T T I T E S R S E S T S F P I H F H G
TRTRPLEMESDESGLPAMEIECRITGTLNGVEFELVGGGEGTPEQGRMTNKMKSTKGALTFSPYLLSHV
M G Y G F Y H F G T Y P S G Y E N P F L H A I N N G G Y N T R I E K Y E D G G V L H V S F S Y R Y E A G R V I G D F K V M G T G F P E D
S V I F T D K I I R S N A T V E H L H P M G D N D L D G S F T R T F S L R D G G Y S S V D S H M H F K S A I H P S I L Q N G G P M F A
F R R V E E D H S N T E L G I V E Y Q H A F K T P D A D A G E E R V
    
```

Restriction Sites: SgfI-MluI

Cloning Scheme:



ACCN: NM_001282117

ORF Size: 1239 bp

OTI Disclaimer: The molecular sequence of this clone aligns with the gene accession number as a point of reference only. However, individual transcript sequences of the same gene can differ through naturally occurring variations (e.g. polymorphisms), each with its own valid existence. This clone is substantially in agreement with the reference, but a complete review of all prevailing variants is recommended prior to use. [More info](#)

OTI Annotation: This clone was engineered to express the complete ORF with an expression tag. Expression varies depending on the nature of the gene.

Components: The ORF clone is ion-exchange column purified and shipped in a 2D barcoded Matrix tube containing 10ug of transfection-ready, dried plasmid DNA (reconstitute with 100 ul of water).

RefSeq: [NM_001282117.2](#)

RefSeq Size: 1543 bp

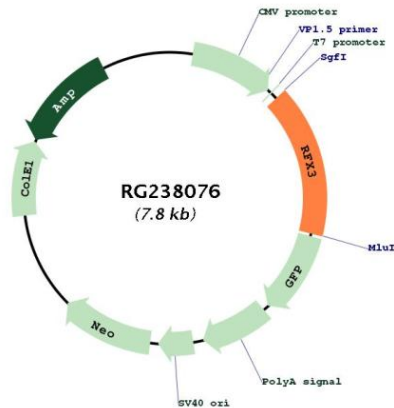
RefSeq ORF: 1242 bp
 Locus ID: 5991
 UniProt ID: [P48380](#)
 Cytogenetics: 9p24.2

Protein Families: Transcription Factors

MW: 46.2 kDa

Gene Summary: This gene is a member of the regulatory factor X gene family, which encodes transcription factors that contain a highly-conserved winged helix DNA binding domain. The protein encoded by this gene is structurally related to regulatory factors X1, X2, X4, and X5. It is a transcriptional activator that can bind DNA as a monomer or as a heterodimer with other RFX family members. Multiple transcript variants encoding different isoforms have been described for this gene. [provided by RefSeq, Aug 2013]

Product images:



Circular map for RG238076