

Product datasheet for **RG238073**

TMPRSS5 (NM_001288750) Human Tagged ORF Clone

Product data:

Product Type:	Expression Plasmids
Product Name:	TMPRSS5 (NM_001288750) Human Tagged ORF Clone
Tag:	TurboGFP
Symbol:	TMPRSS5
Synonyms:	SPINESIN
Mammalian Cell Selection:	Neomycin
Vector:	pCMV6-AC-GFP (PS100010)
E. coli Selection:	Ampicillin (100 ug/mL)
ORF Nucleotide Sequence:	>RG238073 representing NM_001288750. Blue=ORF Red=Cloning site Green=Tag(s)

```
GCTCGTTT TAGTGAACCGTCAGAATTTTGT AATACGACTCACTATAGGGCGGCCGGGAATTCGTCGACTG
GATCCGGTACCGAGGAGATCTGCCGCC CGCATCGCC
ATGCGACGTGGCTGTGCAGTGTGGGAGCCCTGGGGCTGCTGGCCGGTGCAGGTGTTGGCTCATGGCTC
CTAGTGTGTATCTGTGTCTGTGCCTCTCAGCCATTTCGGGACCTTGCAGGATGAGGAGATAACT
TTGAGCTGCTCAGAGGCCAGCGCTGAGGAAGCTCTGCTCCCTGCACCTCCCAAACAGTATCTTTCAGA
ATAAACAGCGAAGACTTCTTGTGGAAGCGCAAGTGAGGGATCAGCCACGCTGGCTCCTGGTCTGCCAT
GAGGGCTGGAGCCCCGCCCTGGGGCTGCAGATCTGCTGGAGCCTTGGGCATCTCAGACTCACTCACCAC
AAGGGAGTAAACCTCACTGACATCAAACCAACAGTTCAGGAGTTTGGCTCAGCTCTCTCTAGACTG
GGAGGCTTCTGGAGGAGCGTGGCAGCCAGGAACAACCTGCACCTTCTGGTCAAGTTGTTCCCTCAGA
TGCTCTGAGTGTGGAGCGAGGCCCTGGCTTCCCGGATAGTTGGTGGGCAGTCTGTGGCTCCTGGGCGC
TGGCCGTGGCAGGCCAGCGTGGCCCTGGGCTTCCGGCACACGTGTGGGGCTCTGTGCTAGCGCCACGC
TGGGTGGTACTGCTGCACATTGTATGCACAGTTTCAGGCTGGCCCGCTGTCCAGCTGGCGGGTTCAT
GCGGGGTGGTCAGCCACAGTGCCGTGAGGCCCAAGGGGCTCTGGTGGAGAGGATTATCCACAC
CCCCTACAGTGCCAGAATCATGACTACGACGTCGCCCTCTGAGGCTCCAGACCGCTCTCAACTTC
TCAGACACTGTGGGCGCTGTGTGCCTGCCGGCAAGGAACAGCATTTCCGAAGGGCTCGCGGTGCTGG
GTGTCTGGCTGGGGCCACACCCACCTAGCCATACTTACAGCTCGGATATGCTCCAGGACACGGTGGTG
CCTTGTTTCAGCACTCAGCTCTGCAACAGCTCTTGCCTGTACAGCGGAGCCCTCACCCCCGCTGCTT
TGCCTGGCTACCTGGACGGAAGGGCTGATGCATGCCAGGGAGATAGCGGGGGCCCCCTAGTGTGCCCA
GATGGGGACACATGGCGCTAGTGGGGGTGGTACGCTGGGGCGTGGCTGCGCAGAGCCCAATCACCCA
GGTGTCTACGCCAAGGTAGCTGAGTTTCTGGACTGGATCCATGACACTGCTCAGGACTCCCTCCTC
ACGCGTACGCGGCCGCTCGAG - GFP Tag - GTTTAAAC
```



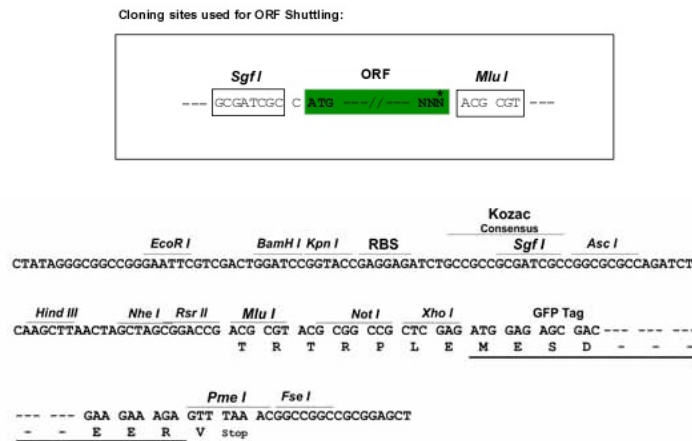
[View online »](#)

Protein Sequence: >Peptide sequence encoded by RG238073
 Blue=ORF Red=Cloning site Green=Tag(s)

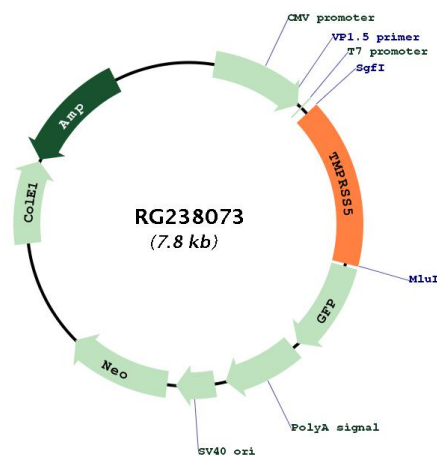
MRRGCAVLGALGLLAGAGVGSWLLVLYLCPAASQPI SGT LQDEEITLSCSEASAE EALLPALPKTVSFR
 INSEDFLL EAQVRDQPRWLLVCH EGWSPALGLQICWSLGHRLTHHKGVNLDIKLNSSQEF AQLSPRL
 GGFL EEA WQPRNCTSGQV VSLRCSECGARPLASRIVGGQSVAPGRWPWQASVALGFRHTCGGSVLAPR
 WVYTA AHCMHSFRLARLSSWRVHAGLVSHSAVRPHQ GALVERIIPHPL YSAQNHDYDVALLRLQTALNF
 SDTVGAVCLPAKEQHFPKGSRCWVSGWGH THPSHTYSSDMLQDTVVPLFSTQLCNSSCVYSGALTPRML
 CAGYLDGRADACQDSSGGLVCPDGD TWRLVGVVSWGRGCAEPNHPGVYAKVAEFLDWIHDTAQDSLL
TRTRPLEME SDE SGLPAMEIECRITGTLNGVEFELVGGEGTPEQGRMTNKMKSTKGALTFSPYLLSHV
 MGYGFYHFGTYP SGYENPFLHAINNGGYNTRIEKYEDGGVLHVSFSYRYEAGRVIGDFKVMGTGFPED
 SVIFTDKIIRSNATVEHLHPMGDNDLDGSFTRTFSLRDGGYSSVVD SHMHFKSAIHPSILQNGGPMFA
 FRRVEEDHSNTELGIVEYQHAFKTPDADAGEERV

Restriction Sites: SgfI-MluI

Cloning Scheme:



Plasmid Map:



ACCN:	NM_001288750
ORF Size:	1239 bp
OTI Disclaimer:	The molecular sequence of this clone aligns with the gene accession number as a point of reference only. However, individual transcript sequences of the same gene can differ through naturally occurring variations (e.g. polymorphisms), each with its own valid existence. This clone is substantially in agreement with the reference, but a complete review of all prevailing variants is recommended prior to use. More info
OTI Annotation:	This clone was engineered to express the complete ORF with an expression tag. Expression varies depending on the nature of the gene.
Components:	The ORF clone is ion-exchange column purified and shipped in a 2D barcoded Matrix tube containing 10ug of transfection-ready, dried plasmid DNA (reconstitute with 100 ul of water).
RefSeq:	NM_001288750.2
RefSeq Size:	2157 bp
RefSeq ORF:	1242 bp
Locus ID:	80975
UniProt ID:	Q9H3S3
Cytogenetics:	11q23.2
Protein Families:	Druggable Genome, Protease, Transmembrane
MW:	45.2 kDa
Gene Summary:	This gene encodes a protein that belongs to the serine protease family. Serine proteases are known to be involved in many physiological and pathological processes. Alternative splicing results in multiple transcript variants. [provided by RefSeq, Jan 2014]