

Product datasheet for **RG238059**

ANTXR2 (NM_001286781) Human Tagged ORF Clone

Product data:

Product Type:	Expression Plasmids
Product Name:	ANTXR2 (NM_001286781) Human Tagged ORF Clone
Tag:	TurboGFP
Symbol:	ANTXR2
Synonyms:	CMG-2; CMG2; HFS; ISH; JHF
Mammalian Cell Selection:	Neomycin
Vector:	pCMV6-AC-GFP (PS100010)
E. coli Selection:	Ampicillin (100 ug/mL)
ORF Nucleotide Sequence:	>RG238059 representing NM_001286781. Blue=ORF Red=Cloning site Green=Tag(s)

```
GCTCGTTTGTGAAACCGTCAGAATTTGTAAACGACTCACTATAGGGCGCCGGGAATTCGTCGACTG
GATCCGGTACCGAGGAGATCTGCCGCCCGCATCGCC
ATGAGATTATCTTTCATTGTGTTTTCTTCTCAAGCAACTATTATTTTGCATTAAGTGGAGACAGAGGC
AAAATCAGTAAAGGCTTGGAGGATTTAAAACGTGTTAGTCCAGTAGGAGAGACATATATCCATGAAGGA
CTAAAGCTAGCGAATGAACAAATTCAGAAAGCAGGAGGCTTAAAACCTCCAGTATCATAATTGCTCTG
ACAGATGGCAAGTTGGACGGTCTGGTGCCATCATATGCAGAGAAAGAGGCAAAGATATCCAGGTCACCT
GGGGCTAGTGTTTATTGTGTTGGTGTCTTGTATTTGAACAAGCACAGCTTGAAAGAATTGCTGATTCC
AAGGAGCAAGTTTTCCCTGTCAAAGGTGGATTTCAAGGCTCTAAAGGAATAATTAATTCTATACTAGCT
CAGTCATGTACTGAAATCCTAGAAATGCAGCCCTCAAGTGTCTGTGTGGGGGAGGAATTCAGATTGTC
TTAAGTGAAGAGGATTCATGCTGGGCAGTCGGAATGGCAGTGTCTCTGCACTTACACTGTAAATGAA
ACATATAACAACGAGTGTAAAACAGTAAGTGTACAGCTTAATTCTATGCTTTGTCCTGCACCTATCCTG
AATAAAGCTGGAGAACTCTTGATGTTTCAGTGAGCTTAATGGAGGAAAATCTGTCATTTCCAGGATCA
TTAATTGTCACAGCCACAGAATGTTCTAACGGGATCGCAGCCATCATTGTTATTTGGTGTACTGCTA
CTCCTGGGGATCGGTTTGTGTTGGTGGTTTTGGCCCTTTGCTGCAAAGTGGTTATTAAGGATCCTCCA
CCACCACCCGCCCTGCACAAAAGAGGAGGAAGAAGAACCTTTGCCTACTAAAAAGTGGCAACTGTG
GATGCTTCTCTATTATGGTGGTTCGAGGGGTTGGAGGAATTAAGAATGGAGGTTGGTGGGTTGATAAA
GGATCTACTGAGGAAGGTGCAAGGCTAGAGAAAGCCAAAATGCTGTGGTGAAGATTCTGAAGAAACA
GAGGAACCCATCAGGCCTAGACCACCTCGACCCAAACCCACACACCAGCCTCCTCAGACAAAATGGTAC
ACCCCAATTAAGGGTCGCTTGTGCTCTCTGGGCTTTGTTGAGGCGGCAGTATGACCGGTTTCTTTG
ATGCGACCTCAGGAAGGAGATGAGGGCCGGTGCATAAACTTCTCCCGAGTTCCATCTCAG
ACGCGTACGCGGCCGCTCGAG - GFP Tag - GTTTAAAC
```



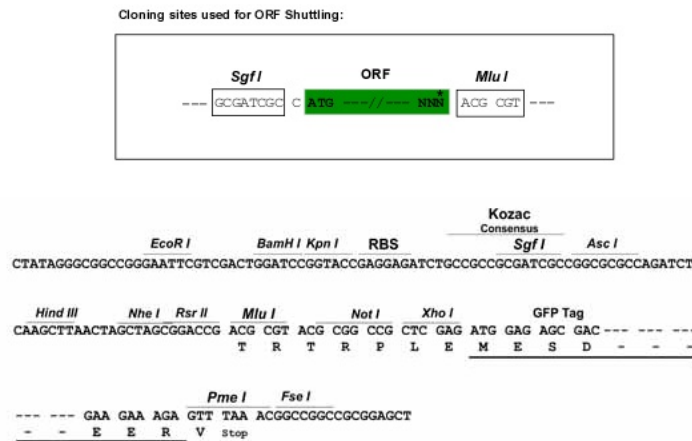
[View online >](#)

Protein Sequence: >Peptide sequence encoded by RG238059
 Blue=ORF Red=Cloning site Green=Tag(s)

MRLSFIVFSSQATIILPLTGRGKISKGLEDLKRVSPVGETYIHEGLKLANEQIQKAGGLKTSSIIIAL
 TDGKLDGLVPSYAEKEAKISRLGASVYCVGLDFEQAQLERADSKEQVFPVKGGFQALKGIINSILA
 QSCTEILELQPSSVYCVGEEFQIVLSRGRFMLGSRNGSVLCTYTVNETYTTSVKPVSVQLNSMLCPAPIL
 NKAGETLDVSVSFMNGGKSVISGSLIVTATECSNGIAAIIIVILVLLLLLGIGLMWWFPLCKVVIKDP
 PPPAPAPKEEEEEPLPTKKWPTVDASYGGRGVGGIKRMEVVRWGDKGSTEEGARLEKAKNAVVKIPEET
 EEPIRPRPRPKPTHQPPQTKWYTIKGRLDALWALLRRQYDRVSLMRPQEGDEGRGINFSRVPSQ
 TRTRPLEMESDESGLPAMEIECRITGTLNGVEFELVGGEGTPEQGRMTNKMSTKGALTFSPYLLSHV
 MGYGFYHFGTYPSTYENPFLHAINNGGYNTRIEKYEDGGVLHVSFSYRYEAGRVIGDFKVMGTGFPED
 SVIFTDKIIRSNTAVEHLHPMGDNDLDGSFTRTFSLRDGGYSSVVDSHMHFKSAIHPSILQNGGPMFA
 FRRVEEDHSNTELGIVEYQHAFKTPDADAGEERV

Restriction Sites: SgfI-MluI

Cloning Scheme:



ACCN: NM_001286781

ORF Size: 1233 bp

OTI Disclaimer: The molecular sequence of this clone aligns with the gene accession number as a point of reference only. However, individual transcript sequences of the same gene can differ through naturally occurring variations (e.g. polymorphisms), each with its own valid existence. This clone is substantially in agreement with the reference, but a complete review of all prevailing variants is recommended prior to use. [More info](#)

OTI Annotation: This clone was engineered to express the complete ORF with an expression tag. Expression varies depending on the nature of the gene.

Components: The ORF clone is ion-exchange column purified and shipped in a 2D barcoded Matrix tube containing 10ug of transfection-ready, dried plasmid DNA (reconstitute with 100 ul of water).

RefSeq: [NM_001286781.2](#)

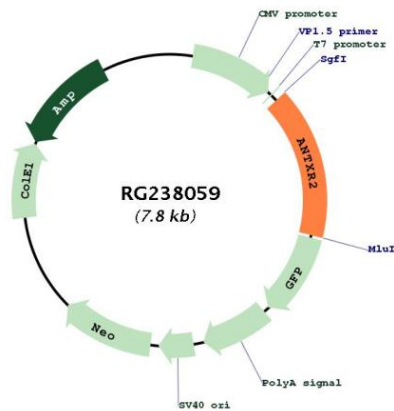
RefSeq Size: 7758 bp

RefSeq ORF: 1236 bp
 Locus ID: 118429
 UniProt ID: [P58335](#)

Cytogenetics: 4q21.21
 Protein Families: Druggable Genome, Transmembrane
 MW: 45.3 kDa

Gene Summary: This gene encodes a receptor for anthrax toxin. The protein binds to collagen IV and laminin, suggesting that it may be involved in extracellular matrix adhesion. Mutations in this gene cause juvenile hyaline fibromatosis and infantile systemic hyalinosis. Multiple transcript variants encoding different isoforms have been found for this gene. [provided by RefSeq, Mar 2009]

Product images:



Circular map for RG238059