

Product datasheet for **RG238046**

TMEM117 (NM_001286212) Human Tagged ORF Clone

Product data:

Product Type:	Expression Plasmids
Product Name:	TMEM117 (NM_001286212) Human Tagged ORF Clone
Tag:	TurboGFP
Symbol:	TMEM117
Mammalian Cell Selection:	Neomycin
Vector:	pCMV6-AC-GFP (PS100010)
E. coli Selection:	Ampicillin (100 ug/mL)
ORF Nucleotide Sequence:	>RG238046 representing NM_001286212. Blue=ORF Red=Cloning site Green=Tag(s)

```
GCTCGTTTAGTGAACCGTCAGAATTTTGTAAACGACTCACTATAGGGCGGCCGGGAATTCGTCGACTG
GATCCGGTACCGAGGAGATCTGCCGCCGCGATCGCC
ATGGCTACTTGCCATTCTCACAGGACTAATAGCTGGCAAATTTCTGTTCCATCAGCGTTTGTGGTCA
GTTGCTCCGATTAATAATGTTTCGAGAAGATCATGGGTCGTGGATGACAATGTTCTTCAGACAATTC
CTTTCTCTTCATATTTTCTCACATATACAACACGATTCTTCTAATGGATGGGAACATGGGGTCACTGAT
ATGATGCTTCAGGACAAACCCTATCCTGACTGGGAAAAATCAGCAAGAGCTTTCTGGAAGAAAGGAAAT
GTTAGGATCACTTTATTCTGGACAGTCTTTTTACTCTGACGCTGTGGTTGACTTGTGATTACAACG
GACTGGATCAGCTGGGACAAGCTGAATCGGGATTTTTGCCAGTGATGAAGTTCCAGAGCATTCCTT
GCTTCTTTTATCTTGGTCTTTGACCTTCTTATTGTGATGCAGGACTGGGAATCCACATTTTCATGGGA
GATGTTGATGTAATCTCCCTGGTTTGACACCCCTCACATGCAGTTCAAGATTCCTTTCTCCAGAAA
ATCTTCAAGGAGGAATATCGTATTCACATAACAGGCAAATGGTTAACTATGGAATTATCTTCTCGTC
TTGATTTTGGATCTTAATATGTGGAAGAACCAATATTTTATAAACCTCATGAATATGGGCAATATATC
GGCCCGGGCAGAAGATATACAGTGAAGACTCAGAAAGTTTAAAAGATTTGAACAGAACCAAGCTA
TCCTGGGAATGGAGTCCAATCACACTAACCTCGGACTAATAAAACATATGTTGAGGGAGACATGTTT
TTACACAGCAGGTTCATAGGAGCCAGTCTTGATGTCAAGTGTCTGGCCTTTGTTCAAGCCTGATAGCC
TTTGTGTGGTTTGGATTCTTTATTTGGTCTTTGGACGATTTTTGAAAAATGAGCCACGCATGGAGAAT
CAAGACAAAACCTTACACTCGCATGAAAAGAAAATCTCCATCAGAACATAGCAAAGACATGGGAATCACT
CGAGAAAACACCCAGGCTTCAGTAGAAGACCCCTTGAATGACCCTTCTTTGGTTTGCATCAGGTCTGAC
TTCAATGAGATCGTCTACAAGTCTTCCACCTAACCTCGGAAAACCTTGAGCTCACAGTTGAACGAATCT
ACTAGTGAACAGAAGCTGATCAAGACCAACGACTTCTAAAAGTACACCTACGAAC
ACGCGTACGCGGCCGCTCGAG - GFP Tag - GTTTAAAC
```



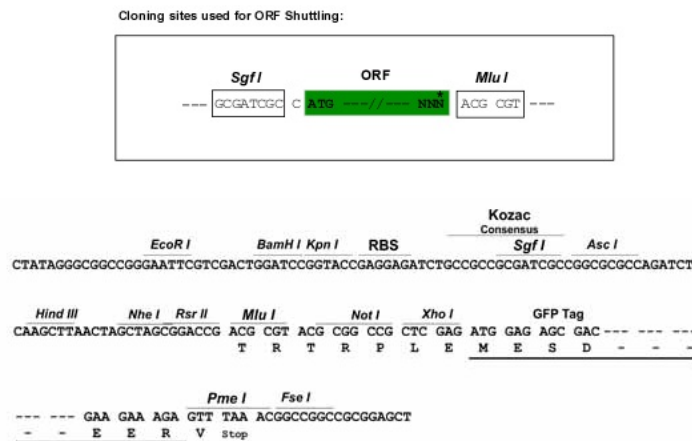
[View online »](#)

Protein Sequence: >Peptide sequence encoded by RG238046
 Blue=ORF Red=Cloning site Green=Tag(s)

MATCHSHRTNSWQISVPSAFVWSVAPIKNVSRSSWVDDNVLQHNSLSLHIFSHIQHSSNGWEHGVTDMMLQDKPYPDWPKSARAFWKKGNVRITLFWTVLFLTTSVVVLVITTDWISWDKLNRFPSDEVSR AFLASFILVFDLLIVMQDWEFPHFMGDVDVNLPLGHTPHMQFKIPFFQKIFKEEYRIHITGKWFNYGIIFLV LILDLNMWKNQIFYPKPEHYGQYIGPGQKIYTVKDESELKDLNRTKLSWEWRSNHTNPRTNKTYVEGDMF LHSRFIGASLDVKCLAFVPSLIAFVWFGFFIWFFGRFLKNEPRMENQDKTYTRMKRKSPEHSDMGIT RENTQASVEDPLNDPSLVCIRSDFNEIYKSSHLTSENLSQLNESTSATEADQDPTTSKSTPTN **TRTRPLEMESDESGLPAMEIECRITGTLNGVEFELVGGEGTPEQGRMTNKMSTKGALTFSPYLLSHV MGYGFYHFGTYPYSGYENPFLHAINNGGYNTRIEKYEDGGVLHVSFSYRYEAGRVIGDFKVMGTGFPED SVIFTDKIIRS NATVEHLHPMGDNDLDGSFTRTFSLRDGGYSSVVD SHMHFKSAIHPSILQNGGPMFA FRRVEEDHSNTELGIVEYQHAFKTPDADAGEERV**

Restriction Sites: SgfI-MluI

Cloning Scheme:



ACCN: NM_001286212

ORF Size: 1230 bp

OTI Disclaimer: The molecular sequence of this clone aligns with the gene accession number as a point of reference only. However, individual transcript sequences of the same gene can differ through naturally occurring variations (e.g. polymorphisms), each with its own valid existence. This clone is substantially in agreement with the reference, but a complete review of all prevailing variants is recommended prior to use. [More info](#)

OTI Annotation: This clone was engineered to express the complete ORF with an expression tag. Expression varies depending on the nature of the gene.

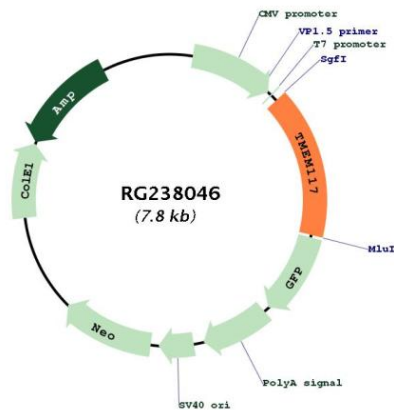
Components: The ORF clone is ion-exchange column purified and shipped in a 2D barcoded Matrix tube containing 10ug of transfection-ready, dried plasmid DNA (reconstitute with 100 ul of water).

RefSeq: [NM_001286212.1](#), [NP_001273141.1](#)

RefSeq Size: 2904 bp

RefSeq ORF:	1233 bp
Locus ID:	84216
Cytogenetics:	12q12
Protein Families:	Transmembrane
MW:	48.2 kDa
Gene Summary:	Involved in endoplasmic reticulum (ER) stress-induced cell death pathway.[UniProtKB/Swiss-Prot Function]

Product images:



Circular map for RG238046