

Product datasheet for **RG238041**

ZNF3 (NM_001278291) Human Tagged ORF Clone

Product data:

Product Type:	Expression Plasmids
Product Name:	ZNF3 (NM_001278291) Human Tagged ORF Clone
Tag:	TurboGFP
Symbol:	ZNF3
Synonyms:	A8-51; HF.12; KOX25; PP838; Zfp113
Mammalian Cell Selection:	Neomycin
Vector:	pCMV6-AC-GFP (PS100010)
E. coli Selection:	Ampicillin (100 ug/mL)
ORF Nucleotide Sequence:	>RG238041 representing NM_001278291. Blue=ORF Red=Cloning site Green=Tag(s)

```
GCTCGTTTGTAGTGAACCGTCAGAATTTTGTAAACGACTCACTATAGGGCGGCCGGGAATTCGTCGACTG
GATCCGGTACCGAGGAGATCTGCCGCCCGCATCGCC
ATGTTGGCGGCTGCGCTCCTAAAGGCCAAGTCCCAGGAGCTGGTAACCTTTGAGGATGTAGCTGTGTAC
TTCATCCGGAAGGAGTGGAAAGCGTTTGGAACTGCTCAGAGGGACCTCTATAGAGATGTGATGCTGGAG
AATTACGGGAATGTGTTCTCACTGGATCGTGAGACCAGGACTGAAAATGATCAAGAAATTTCTGAAGAC
ACAAGATCACATGGGGTCTACTGGGAAGATTTCAAAGGATATTTCTCAGGGTCTCAAGTTTAAAGAA
GCCTATGAACGAGAAGTCAGTCTGAAAAGGCCGCTGGGAACTCCCTGGAGAAAGACTGAACAGGAAA
ATGCCAGATTTTGGTCAAGTGACAGTTGAGGAGAAGCTAACCCCAAGGGAGAGAGAAGCGAGAAATAT
AATGATTTTGGGAACAGCTTCACTGTGAATCCAACCTTATCTCACATCAGAGACTCCCGTGGGAGAC
AGACCCATAAGTGTGATGAATGTAGCAAGAGCTTAAATCGAACTTCAGACCTTATTCAACATCAGAGA
ATCCACACTGGGAAAAGCCCTATGAATGTAATGAGTGTGGGAAGGCCTTCAGCCAGAGCTCACACCTT
ATTCAGCATCAGAGAAATCCACACTGGGAAAAACCTTATGAATGTAGTGATTGTGGGAAAACCTTCAGC
TGTAGCTCTGCCCTATTCTGCATCGGAGGATCCACACGGGGAGAAAACCTATGAATGTAATGAGTGT
GGGAAGACCTTCAGCTGGAGCTCCACCCTACCCACCATCAGAGAATCCACACTGGTGGAGAAACCCTAC
GCCTGCAATGAATGTGGGAAGGCCTTCAGCAGGAGCTCAACCTTATTCCACATCAGAGAATCCACACT
GGAGAAAACCTATGAATGTAATGAATGTGGGAAGGCCTTCAGCCAGAGCTCACACCTATCAGCAC
CAGAGAATCCACACTGGAGAGAAGCCCTACGAATGTATGGAATGTGGAGGAAAGTTTACCTACAGTTCA
GGCCTTATTACAGCATCAAAGAATCCACACCGGGGAGAACCCTATGAATGTAGTGAGTGTGGGAAAGCC
TTCAGGTACAGCTCGGCTCTTGTTCGCCATCAGAGAATTCACACTGGAGAGAAGCCTTTGAATGGGATC
GGCATGAGCAAAAGCTCCCTCAGAGTTACGACCGAGTTAAATATCAGAGAGTCCACG
ACGCGTACGCGGCCGCTCGAG - GFP Tag - GTTTAAAC
```



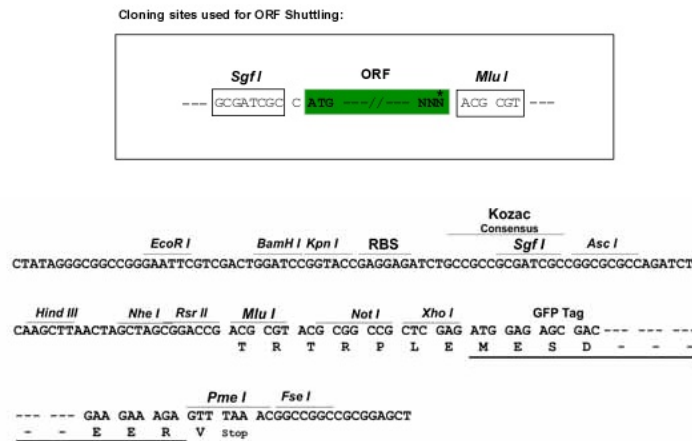
[View online »](#)

Protein Sequence: >Peptide sequence encoded by RG238041
 Blue=ORF Red=Cloning site Green=Tag(s)

MLAAALLKAKSQELVTFEDVAVYFIRKEWKRLPAQRDLYRDVMLENYGNVFLSDRETRTENDQEISED
 TRSHGVLLGRFQKDISQGLKFKEAYEREVSLKRPLGNSPGERLNRKMPDFGQVTVEEKLTPRGERSEKY
 NDFGNSFTVNSNLIHQRLPVGDRPHKCDECSKSFNRTSDLIHQRIHTGEKPYECNECGKAFSQSSH
 IQHQRIHTGEKPYECSDCGKTFSCSSALILHRRHTGEKPYECNECGKTFSWSSLTTHHQRIHTGEKPY
 ACNECGKAFSRSSLIHQRIHTGEKPYECNECGKAFSQSSHLYQHRIHTGEKPYECMECGGKFTYSS
 GLIQHQRIHTGENPYECSECGKAFRYSSALVRHQRIHTGEKPLNGIGMSKSSLRVTTELNIREST
 TRTRPLEMESDESGLPAMEIECRITGTLNGVEFELVGGEGTPEQGRMTNKMSTKGALTFSPYLLSHV
 MGYGFYHFGTYPYSGYENPFLHAINNGGYNTRIEKYEDGGVLHVSFSYRYEAGRVIGDFKVMGTGFPED
 SVIFTDKIIRSNATVEHLHPMGDNDLDGSFTRTFSLRDGGYSSVVDSHMHFKSAIHPSILQNGGPMFA
 FRRVEEDHSNTELGIVEYQHAFKTPDADAGEERV

Restriction Sites: SgfI-MluI

Cloning Scheme:



ACCN: NM_001278291

ORF Size: 1230 bp

OTI Disclaimer: The molecular sequence of this clone aligns with the gene accession number as a point of reference only. However, individual transcript sequences of the same gene can differ through naturally occurring variations (e.g. polymorphisms), each with its own valid existence. This clone is substantially in agreement with the reference, but a complete review of all prevailing variants is recommended prior to use. [More info](#)

OTI Annotation: This clone was engineered to express the complete ORF with an expression tag. Expression varies depending on the nature of the gene.

Components: The ORF clone is ion-exchange column purified and shipped in a 2D barcoded Matrix tube containing 10ug of transfection-ready, dried plasmid DNA (reconstitute with 100 ul of water).

RefSeq: [NM_001278291.2](#)

RefSeq Size: 2605 bp

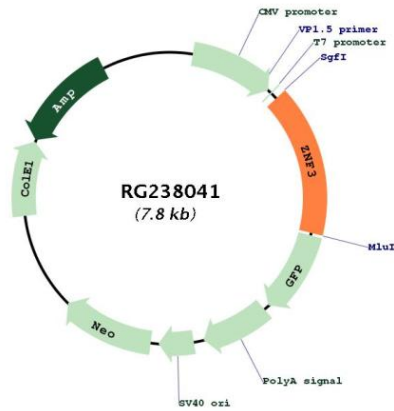
RefSeq ORF: 1233 bp
 Locus ID: 7551
 Cytogenetics: 7q22.1

Protein Families: Transcription Factors

MW: 47.6 kDa

Gene Summary: Involved in cell differentiation and/or proliferation.[UniProtKB/Swiss-Prot Function]

Product images:



Circular map for RG238041