

## Product datasheet for **RG238035**

### ZNF286 (ZNF286A) (NM\_001288647) Human Tagged ORF Clone

#### Product data:

Product Type:	Expression Plasmids
Product Name:	ZNF286 (ZNF286A) (NM_001288647) Human Tagged ORF Clone
Tag:	TurboGFP
Symbol:	ZNF286
Synonyms:	ZNF286
Mammalian Cell Selection:	Neomycin
Vector:	pCMV6-AC-GFP (PS100010)
E. coli Selection:	Ampicillin (100 ug/mL)
ORF Nucleotide Sequence:	>RG238035 representing NM_001288647. Blue=ORF Red=Cloning site Green=Tag(s)

```
GCTCGTTTGTAGTGAACCGTCAGAATTTTGTAAATACGACTCACTATAGGGCGGCCGGGAATTCGTGCGACTG
GATCCGGTACCGAGGAGATCTGCCGCCGCGATCGCC
ATGGAGACTAGACCACAGAGCAAGGATTCAACTTCAGTGCAAGATTTTTCCAAAGCAGAATCATGCAAA
GTTGCAATAATAGACAGACTGACACGGAATAGTGTCTATGACTCTAACTTGAAGCAGCCCTTGAATGT
GAAAATTTGGTTAGAGAATCAGCAAGGAAATCAGGAGAGACATTTGAGAGAAATGTTCACTCACATGAAT
TCACTCTCTGAGGAAACAGACCATAAGCATGATGTATACTGGAAAAGCTTCAATCAGAAATCTGTCCTT
ATCACTGAAGACAGAGTCCCAAAGGATCTTATGCCTTCCATACACTGAAAAAGCTTGAACAAAAA
TCAAACCTAATGAAAAAGCAGAGAACTATAAAGAGAAAAACCTCATAAATGTAATGATTGTGGTGAA
CTCTTCACCTACCATTCACTGCTTATTCGACACCAGAGAGTCCACTGGAGAGAAACCCCTATACCTGC
AATGAATGTGGGAAATCTTTTAGCCACAGAGCTAATTTAACTAAACACCAGAGAATCATACTAGAATT
CTCTTTGAATGCAGTGAATGCAAGAAAACCTTCACAGAAAGCTCATCCCTTGCAACACATCAGAGAATT
CACGTTGGAGAGAGACCTTATGAATGCAATGAATGTGGGAAAGGTTTTAATCGAAGTACACATCTTGTG
CAGCATCAGTTGATTCACTGGAGTGAAGCCTTATGAATGTAATGAATGTGATAAAGCTTTTATTCAT
TCATCAGCACTCATTAAACATCAAAGAATCATACTGGAGAGAAACCTTATAAATGTCAAGAATGTGGG
AAAGCCTTTAGCCATTGCTCATCCCTAACTAAGCATCAGAGAGTTCATACTGGAGAAAAGCCATATGAA
TGCAGTGAATGTGGAAAACCTTTAGTCAGAGCACACATCTTGTCAACATCAGAGAATTCACACTGGA
GAGAAAACCTATGAGTGTAAATGAATGTGGGAAAACCTTCAGCCGAGCTCCAATTTTGTAAACATCAA
AGAATTCATATTGAAAAGAAACCGTACAAATGTAGCGAGTGTGGAAAAGCCTTCATTTCATTCATCAGCT
CTCATTCAACATCAGAGAATCATAACCGGAGAGAAACCTTTAGATGTAATGAGTGTGGAAAAGCTTT
AAGTGCAGTTTCATCTCTCATCAGACATCAAAGAGTTTCACACTGAAGAGCAACCC
ACGCGTACGCGGCCGCTCGAG - GFP Tag - GTTTAAAC
```



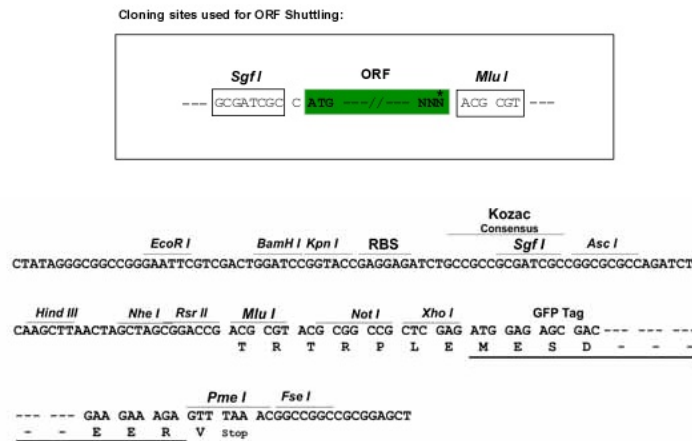
[View online »](#)

**Protein Sequence:** >Peptide sequence encoded by RG238035  
 Blue=ORF Red=Cloning site Green=Tag(s)

METRPQSKDSTSVQDFSKAESCKVAIIDRLTRNSVYDSNLEAALECNWLENQQGNQERHLREMFTHMN  
 SLSEETDHHKHDVYWKSFNQKSVLITEDRVPKGSYAFHTLEKSLKQKSNLMKKQRTYKEKKPHKCNDCEG  
 LFTYHSVLIRHQRVHTGEKPYTCNECGKSFHRANLTKHQRTHTIRILFECSECKTFTESSLATHQRI  
 HVGERPYECNECGKGFNRSTHLVQHQLIHTGVKPYECNECDKAFIHSSALIKHQRTHTGEKPYKCQECG  
 KAFSHCSSLTKHQRVHTGEKPYECSECGKTFQSSTHLVQHQRHTHTGEKPYECNECGKTFSRSSNF AKHQ  
 RIHIGKKPYKCSECGKAFIHSSALIQHQRHTHTGEKPFRCNECGKSFKCSSLIRHQRVHTEEQP  
 TRTRPLEMESDESGLPAMEIECRITGTLNGVEFELVGGEGTPEQGRMTNKMSTKGALTFSPYLLSHV  
 MGYGFYHFGTYPSTYENPFLHAINNGGYNTRIEKYEDGGVLHVSFSYRYEAGRVIGDFKVMGTGFPED  
 SVIFTDKIIRSNATVEHLHPMGDNDLDGSFTRTFSLRDGGYSSVVD SHMHFKSAIHPSILQNGGPMFA  
 FRRVEEDHSNTELGIVEYQHAFKTPDADAGEERV

**Restriction Sites:** SgfI-MluI

**Cloning Scheme:**



**ACCN:** NM\_001288647

**ORF Size:** 1227 bp

**OTI Disclaimer:** The molecular sequence of this clone aligns with the gene accession number as a point of reference only. However, individual transcript sequences of the same gene can differ through naturally occurring variations (e.g. polymorphisms), each with its own valid existence. This clone is substantially in agreement with the reference, but a complete review of all prevailing variants is recommended prior to use. [More info](#)

**OTI Annotation:** This clone was engineered to express the complete ORF with an expression tag. Expression varies depending on the nature of the gene.

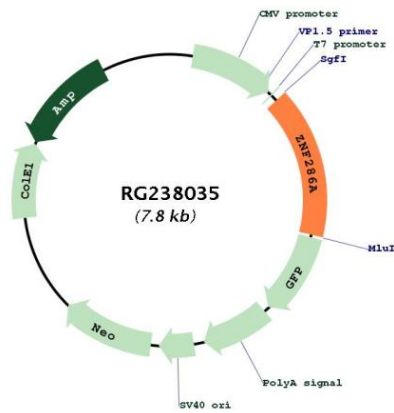
**Components:** The ORF clone is ion-exchange column purified and shipped in a 2D barcoded Matrix tube containing 10ug of transfection-ready, dried plasmid DNA (reconstitute with 100 ul of water).

**RefSeq:** [NM\\_001288647.2](#)

**RefSeq Size:** 5416 bp

RefSeq ORF: 1230 bp  
 Locus ID: 57335  
 UniProt ID: [Q9HBT8](#)  
  
 Cytogenetics: 17p12  
 Protein Families: Transcription Factors  
 MW: 47.9 kDa  
 Gene Summary: May be involved in transcriptional regulation.[UniProtKB/Swiss-Prot Function]

**Product images:**



Circular map for RG238035