

## Product datasheet for **RG238025**

### SSB (NM\_001294145) Human Tagged ORF Clone

#### Product data:

Product Type:	Expression Plasmids
Product Name:	SSB (NM_001294145) Human Tagged ORF Clone
Tag:	TurboGFP
Symbol:	SSB
Synonyms:	La; La/SSB; LARP3
Mammalian Cell Selection:	Neomycin
Vector:	pCMV6-AC-GFP (PS100010)
E. coli Selection:	Ampicillin (100 ug/mL)
ORF Nucleotide Sequence:	>RG238025 representing NM_001294145. Blue=ORF Red=Cloning site Green=Tag(s)

```
GCTCGTTTGTAGTAACCGTCAGAATTTTGTAAACGACTACTATAGGGCGCCGGGAATTCGTCGACTG
GATCCGGTACCGAGGAGATCTGCCGCCGCGATCGCC
ATGGCTGAAAATGGTGATAATGAAAAGATGGCTGCCCTGGAGGCCAAAATCTGTCATCAAATGAGTAT
TATTTTGGCGACTTCAATTTGCCACGGGACAAGTTTCTAAAGGAACAGATAAACTGGATGAAGGCTGG
GTACCTTTGGAGATAATGATAAAATTCAACAGGTTGAACCGTCTAACACAGACTTTAATGTAATTGTG
GAAGCATTGAGCAAAATCCAAGGCAGAACTCATGGAAATCAGTGAAGATAAACTAAAATCAGAAGGCTC
CCAAGCAAACCCCTACCTGAAGTACTGATGAGTATAAAAATGATGTAACAAAACAGATCTGTTTATATT
AAAGGCTTCCCAACTGATGCAACTCTTGATGACATAAAAGAATGGTTAGAAGATAAAGGTCAGTACTA
AATATTAGATGAGAAGAACATTGCATAAAGCATTAAAGGGATCAATTTTGTGTTGTTGATAGCATT
GAATCTGCTAAGAAATTTGTAGAGACCCCTGGCCAGAAGTACAAAAGAAACAGACCTGCTAATACTTTTC
AAGGACGATTACTTTGCCAAAAAAATGAAGAAAGAAAACAAAATAAAGTGAAGCTAAATTAAGAGCT
AAACAGGAGCAAGAAGCAAAAACAAAAGTTAGAAGAAGATGCTGAAATGAAATCTCTAGAAGAAAAGATT
GGATGCTTGTGAAATTTTCGGGTGATTTAGATGATCAGACCTGTAGAGAAGATTTACACATACTTTTC
TCAAATCATGGTGAATAAAATGGATAGACTTCGTCAGAGGAGCAAAAAGAGGGGATAATTCTATTTAAA
GAAAAAGCCAAGGAAGCATTGGGTAAAGCCAAGATGCAATAATGGTAACCTACAATTAAGGAACAAA
GAAGTACTTGGGAAGTACTAGAAGGAGAGGTGGAAAAAGAAGCACTGAAGAAAAATAATAGAAGACCAA
CAAGAATCCCTAAACAAATGGAAGTCAAAAGGTCTGATGATTTAAAGGAAAAGGAAAGGTAATAAAGCT
GCCAGCCTGGGTCTGGTAAAGGAAAAGTACAGTTTCAGGGCAAGAAAACGAAATTTGCTAGTGATGAT
GAACATGATGAACATGATGAAAATGGTGAACCTGGACCTGTGAAAAGAGCAAGAGAAGAAAACAGACAAA
GAAGAACCTGCATCCAAACAACAGAAAACAGAAAATGGTCTGGAGACCAG
ACGCGTACGCGGCCGCTCGAG - GFP Tag - GTTTAAAC
```



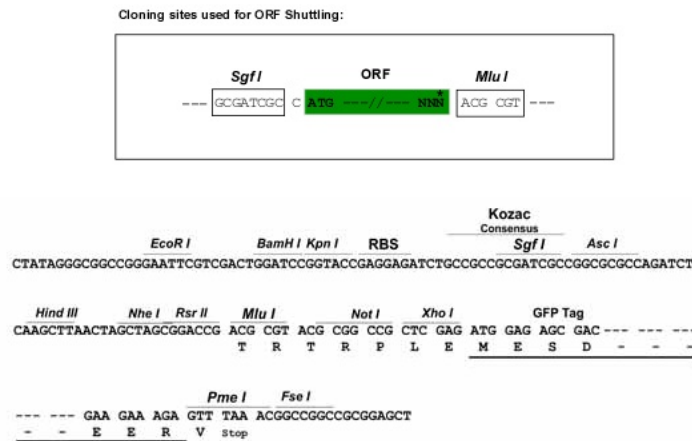
[View online »](#)

**Protein Sequence:** >Peptide sequence encoded by RG238025  
 Blue=ORF Red=Cloning site Green=Tag(s)

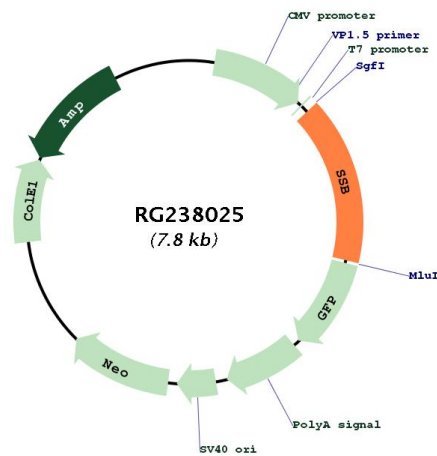
MAENGDNKMAALEAKICHQIEYYFGDFNLPDKFLKEQIKLDEGWVPLEIMIKFNRLNRLTTDFNVIV  
 EALSKSKAELMEISEDKTKIRRSPLKPLPEVTDEYKNDVKNRSVYIKGFPTDATTDDIKEWLEDKGGVL  
 NIQMRRTLHKAFKGSIFVVFDSIESAKKFVETPGQKYKEDLLILFKDDYFAKKNEERKQNKVEAKLRA  
 KQEQAQKLEEDAEMKSLLEEKIGCLLKFSGDLLDQTCREDLHILF SNHGEIKWIDFVRGAKEGILFK  
 EKAKEALGKAKDANNGLQLRNKEVTWEVLEGEVEKEALKKIIEDQQESLNKWKSKGRRFKGKGKGNKA  
 AQP GSGKGVQFGQKTKTFASDDEHDEHDENGATGPVKRAREETDKEEPASKQQTENGAGDQ  
**TRTRPLEMESDESGLPAMEIECRITGTLNGVEFELVGGGEGTPEQGRMTNKMSTKGALTFSPYLLSHV**  
 MGYGFYHFGTYPSTYENPFLHAINNGGYNTRIEKYEDGGVLHVSFSYRYEAGRVIGDFKVMGTGFPED  
 SVIFTDKIIRSNATVEHLHPMGDNDLDGSFTRTFLSLRDGGYSSVVD SHMHFKSAIHPSILQNGGPMFA  
 FRRVEEDHSNTELGIVEYQHAFKTPDADAGEERV

**Restriction Sites:** SgfI-MluI

**Cloning Scheme:**



**Plasmid Map:**



<b>ACCN:</b>	NM_001294145
<b>ORF Size:</b>	1224 bp
<b>OTI Disclaimer:</b>	The molecular sequence of this clone aligns with the gene accession number as a point of reference only. However, individual transcript sequences of the same gene can differ through naturally occurring variations (e.g. polymorphisms), each with its own valid existence. This clone is substantially in agreement with the reference, but a complete review of all prevailing variants is recommended prior to use. <a href="#">More info</a>
<b>OTI Annotation:</b>	This clone was engineered to express the complete ORF with an expression tag. Expression varies depending on the nature of the gene.
<b>Components:</b>	The ORF clone is ion-exchange column purified and shipped in a 2D barcoded Matrix tube containing 10ug of transfection-ready, dried plasmid DNA (reconstitute with 100 ul of water).
<b>RefSeq:</b>	<a href="#">NM_001294145.2</a>
<b>RefSeq Size:</b>	2043 bp
<b>RefSeq ORF:</b>	1227 bp
<b>Locus ID:</b>	6741
<b>UniProt ID:</b>	<a href="#">P05455</a>
<b>Cytogenetics:</b>	2q31.1
<b>Protein Families:</b>	Stem cell - Pluripotency, Transcription Factors
<b>Protein Pathways:</b>	Systemic lupus erythematosus
<b>MW:</b>	46.8 kDa
<b>Gene Summary:</b>	The protein encoded by this gene is involved in diverse aspects of RNA metabolism, including binding and protecting poly(U) termini of nascent RNA polymerase III transcripts from exonuclease digestion, processing 5' and 3' ends of pre-tRNA precursors, acting as an RNA chaperone, and binding viral RNAs associated with hepatitis C virus. Autoantibodies reacting with this protein are found in the sera of patients with Sjogren syndrome and systemic lupus erythematosus. Alternative promoter usage results in two different transcript variants which encode the same protein. [provided by RefSeq, Jun 2014]