

Product datasheet for **RG238014**

HSPBP1 (NM_001297600) Human Tagged ORF Clone

Product data:

Product Type:	Expression Plasmids
Product Name:	HSPBP1 (NM_001297600) Human Tagged ORF Clone
Tag:	TurboGFP
Symbol:	HSPBP1
Synonyms:	FES1
Mammalian Cell Selection:	Neomycin
Vector:	pCMV6-AC-GFP (PS100010)
E. coli Selection:	Ampicillin (100 ug/mL)
ORF Nucleotide Sequence:	>RG238014 representing NM_001297600. Blue=ORF Red=Cloning site Green=Tag(s)

```
GCTCGTTTGTAGTAACCGTCAGAATTTTGTAAACGACTACTATAGGGCGCCGGGAATTCGTCGACTG
GATCCGGTACCGAGGAGATCTGCCGCCCGCATCGCC
ATGGGGGGTGCAGGAGCTCCCCTGAAACGCCGCTTCTCAGCAGACCCTCAAGAATCGACCCATCAGGA
CGCCAGAGCTGCTTCAGCGGTGACACCTTCTCCCTCTAACACATTCTCCCTTCTTACAAACGGCCC
ATGTCAGACGAAGGCTCAAGGGGGAGCCGCTGCCCTGGCGCTGCCCGGCGCTCCAGGGTTGCTCT
TCAGGGGGCGGCGGGCGGCTCCTCGGCTGGGGCTCGGGCAATCCCGGCCCCACGCAACTCCAA
GGCTTGCTGCAGATGGCCATCACCGGGCTCTGAAGAGCCAGACCCTCCTCCAGAACCGATGAGTGAG
GAGAGGCGTCAGTGGCTGCAGGAGGCCATGTCGGCTGCCTTCCGAGGCCAGCGGGAGGAGGTGGAGCAG
ATGAAGAGCTGCCTCCGAGTGTGTACAGCCCATGCCCCCACTGCTGGGGAGGCCGAGCAGGCGGCC
GACCAGCAAGAGCGAGAGGGGGCCCTGGAGCTGCTGGCCGACCTGTGTGAGAACATGGACAATGCCGCA
GACTTCTGCCAGCTGTCTGGCATGCACCTGCTGGTGGGCCGCTACCTGGAGGCGGGGGCTGCGGGACTG
CGGTGGCGGGCGGCACAGCTCATCGGCACGTGCAGTCAGAACGTGGCAGCCATCCAGGAGCAGGTGCTG
GGCCTGGGTGCCCTGCGTAAGCTGCTGCGGCTGCTGGACCGCAGCCTGCGACACGGTGCAGCTCAAG
GCCCTCTCGCCATCTCTGTCTGGTCCGAGAGCAGGAGGCTGGGCTGCTGCAGTTCTCCGCTGGAC
GGCTTCTCTGTGTGATGAGGGCCATGCAGCAGCAGGTGCAGAAGCTCAAGGTCAAATCAGCATTCTGTG
CTGCAGAACCTGCTGGTGGCCACCCCTGAACACAAAGGGACCTGTGCTCCATGGGGATGGTCCAGCAG
CTGGTGGCCCTGGTGGGACAGAGCACAGCCCTTCCACGAGCAGTGTGGAGCCCTGTGCAGCCTG
GTGACAGACTTCCGAGGGTGTGCGCAGTGTGGGAGCCGGAAGTGGGCTGGAGGAGCTCCTCCGC
CACCGCTGCAGCTGCTGCAGCAGCATGAGGAGTACCAGGAGGAGCTGGAGTTCTGTGAAAAGCTGCTA
CAGACCTGTTTCTCCAGCCAGCGGACGACAGCATGGATCGG
ACGCGTACGCGGCCGCTCGAG - GFP Tag - GTTTAAAC
```



[View online »](#)

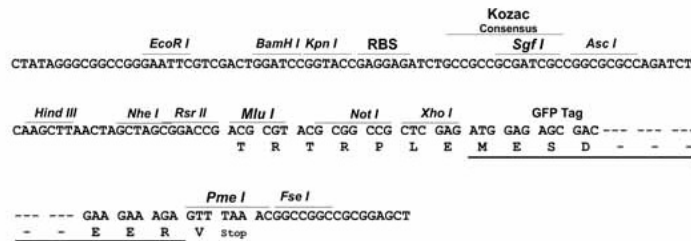
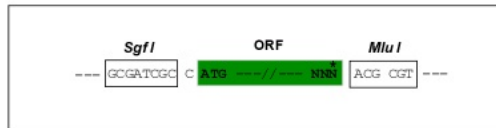
Protein Sequence: >Peptide sequence encoded by RG238014
Blue=ORF Red=Cloning site Green=Tag(s)

```
MGRRAPLKRLLSRPSRIDPSGRQSCFSGDHLPLTHSLLHKRPMSEDESGRSRLPLALPPASQGCS
SGGGGGSSAGGSGNSRPPRNLQGLLQMAITAGSEEDPPPPEMSEERRQWLQEAMSAAFRGQREEVEQ
MKSCLRVLSQPMPTAGEAEQAADQQEREGALELLADLCENMDNAADFQQLSGMHLLVGRYLEAGAAGL
RWRAAQLIGTCSQNVAAIQEQVLGLGALRKLRLDRDACDTRVVKALFAISCLVREQEAGLLQFLRLD
GFSVLMRAMQQVQKLVKSALLQNLVGHPEHKGTLCMGMVQQLVALVRTEHSPFHEHVLGALCSL
VTDFPQGVRECREPELGLEELLRHRCQLLQQHEEYQEELEFCEKLLQTCFSSPADDSMDR
TRTRPLEMESDEGLPAMEIECRITGTLNGVEFELVGGGEGTPEQGRMTNKMSTKGALTFSPYLLSHV
MGYGFYHFETYPSGYENPFLHAINNGGYNTRIEKYEDGGVLHVSFSYRYEAGRVIGDFKVMGTGFPED
SVIFTDKIIRSNATVEHLHMPGDNLDGSFTRTFLRDGGYSSVVDShMHFKSAIHPSILQNGGPMFA
FRRVEEDHSNTELGIVEYQHAFKTPDADAGEERV
```

Restriction Sites: SgfI-MluI

Cloning Scheme:

Cloning sites used for ORF Shutting:



ACCN: NM_001297600

ORF Size: 1215 bp

OTI Disclaimer: The molecular sequence of this clone aligns with the gene accession number as a point of reference only. However, individual transcript sequences of the same gene can differ through naturally occurring variations (e.g. polymorphisms), each with its own valid existence. This clone is substantially in agreement with the reference, but a complete review of all prevailing variants is recommended prior to use. [More info](#)

OTI Annotation: This clone was engineered to express the complete ORF with an expression tag. Expression varies depending on the nature of the gene.

Components: The ORF clone is ion-exchange column purified and shipped in a 2D barcoded Matrix tube containing 10ug of transfection-ready, dried plasmid DNA (reconstitute with 100 ul of water).

RefSeq: [NM_001297600.2](#)

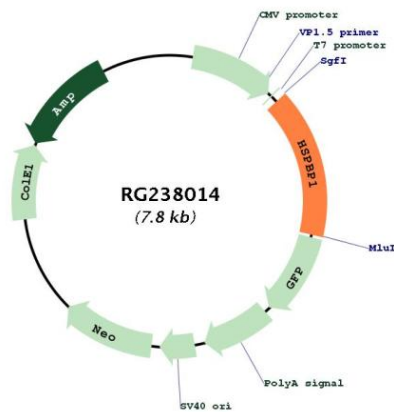
RefSeq Size: 1715 bp

RefSeq ORF: 1218 bp
 Locus ID: 23640
 UniProt ID: [Q9NZL4](#)

Cytogenetics: 19q13.42
 MW: 44.9 kDa

Gene Summary: Inhibits HSPA1A chaperone activity by changing the conformation of the ATP-binding domain of HSPA1A and interfering with ATP binding. Interferes with ubiquitination mediated by STUB1 and inhibits chaperone-assisted degradation of immature CFTR.[UniProtKB/Swiss-Prot Function]

Product images:



Circular map for RG238014