

Product datasheet for **RG238006**

DACT3 (NM_001301046) Human Tagged ORF Clone

Product data:

Product Type:	Expression Plasmids
Product Name:	DACT3 (NM_001301046) Human Tagged ORF Clone
Tag:	TurboGFP
Symbol:	DACT3
Synonyms:	DAPPER3; RRR1
Mammalian Cell Selection:	Neomycin
Vector:	pCMV6-AC-GFP (PS100010)
E. coli Selection:	Ampicillin (100 ug/mL)
ORF Nucleotide Sequence:	>RG238006 representing NM_001301046. Blue=ORF Red=Cloning site Green=Tag(s)

```
GCTCGTTTGTAGTGAACCGTCAGAATTTTGTAAACGACTCACTATAGGGCGCCGGGAATTCGTCGACTG
GATCCGGTACCGAGGAGATCTGCCGCCGCGATCGCC
ATGCGCAGCCCGCGGCCCTGCGGCCGCCCTCCACCGACTCGCCCGACGCGGGGGGCGCAGGGCGGCC
CTGAGCGGCTACATCTCGCGCTCCTGCGCAGGCGCCGCCCGGGGGGCGGGCCAGCCCGGACCAGT
CCCGGGGGCGGGACGGCGGCCCGCGGCCAGAACAGCGTGCAGCGCGCCCGGACCGCTCTCCG
TCCCCCGCAGCGCGGACCCCGCGGGAGCCCTCGTTGGAGCGCGTGGGGGCCACCCACCAGCCCT
GCCGCTTGAGCGCGCCTGGGCGTCGTCTGGGAGTCCGAGGCGGCACCCGAGCCCGCTGCGCCGCC
GCCGCCCTCACCCCGACAGCCCGGCTGAGGGCCGCTTGGTGAAGGCGCAGTACATCCCGGGCGCG
CAGGGCGCCACCCGAGGCTCCCTGGCCGCGCCGCCCGCAAACCGCCGCACTGACCCGCGGCCGC
AGCGTGGAGCAGTCAACACCCCGGAGCGTCCCGGGCCGCCGGCCCGCTGGACGATGGCCGAGGCT
TCGGGCGCCCGGCTCGCCAGGGCCCGCAAGGCTCGCGCTCCAGTCTGAGACCAGCCTGCTGGGC
CGCGCTCCCGGCTCCCTTCGGGGCCCCCTAAGTACCCACGCGGAGCGGGAAGAGCCTCGGCCTCCA
CGGCCACCGCGGGCCAGCGCCACGCTGGCGGCCAGGCCGAGGGTCTGCCGTGCTGGCGCTCC
ACTGCGGAGATCGACGCTGCCGATGGGCGCCGCTGCGGCCCGAGCCCTGCGGCGCGTGTCCCGGC
CCCGGCCCGTCCCGTCACTCCCGAGCGTCTGCTGTTACGGCTGCGGGGCGAGCGACTCCGAGTGC
TCGGTGGGCGCCTGGGGCCCCTGGGACCGGGGGCCCGGGAGGCGTCCGGGGGGTTACGGGGAG
AGCGAATCGAGCGCCAGCGAGGAGAATCGCCTGCCTTCACTCTGCCTCCAGCGACTCAGACGGCAGC
GGTGGCCTCGTGTGGCCGACGAGCTGGTGGCGGCCACCGCGCCCTCGGGGTGGAGCAGGTGCAGGG
GCGCCCGCAGGCCCGCCAAAGTCTTCTGAAAATCAAAGCTTCCACGCGCTCAAGAAAAAGATACTG
CGTTTCCGTTCCGGTTCTCTCAAGGTCATGACTACAGT
AGCGGACCGACGCGTACGCGGCCGCTCGAG - GFP Tag - GTTTAAAC
```



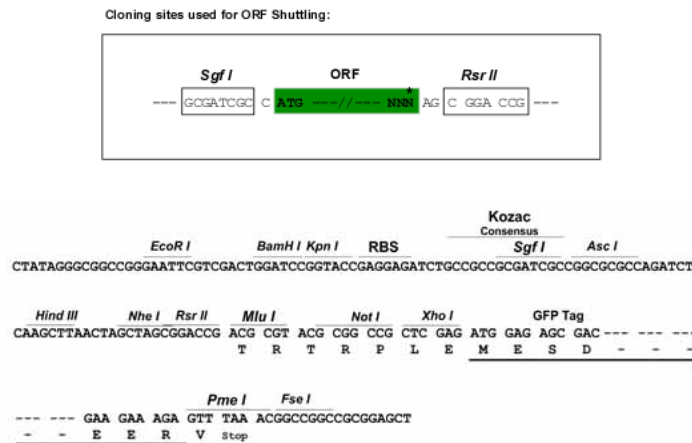
[View online »](#)

Protein Sequence: >Peptide sequence encoded by RG238006
 Blue=ORF Red=Cloning site Green=Tag(s)

MRSRPRCGRPPTDSDAGGAGRPLDGYISALLRRRRRRGAGQPRTSPGGADGGPRRQNSVRQRPPDASP
 SPGSARPAREPSLERVGGHPTSPAALSRAWASSWESEAAPEPAAPPAAPSPPDSPAEGRLVKAQYIPGA
 QAATRGLPGRAARRKPPPLTRGRSVEQSPRRERPRRAAGRRGRMAEASGRRGSPRARKASRSQSETSLG
 RASAVPSGPPKYPTAEREERPPRRRGPAPTLAAQAAGSCRRWRSTAEIDAADGRRVRPRAPAARVPG
 PGPSPSAPQRRLLYGCAGSDSECSAGRLGPLGRRGPAGGVGGYGESESSASEGESPAFSSASSSDSGS
 GGLVWPQQLVAATAASGGGAGAGAPAGPAKVFVKIKASHALKKKILRFRSGSLKVMTTV
 SGPTRTRPLEMESDESGLPAMEIECRITGTLNGVEFELVGGEGTPEQGRMTNKMKSTKGALTFSPYLL
 SHVMGYGFYHFGTYPSTYENPFLHAINNGGYTNTRIEKYEDGGVLHVSFSYRYEAGRVIGDFKVMGTGF
 PEDSVIFTDKIIRSNTAVEHLHPMGDNDLDGSFTRTFLRDGGYSSVVDSHMHFKSAIHPSILQNGGP
 MFAFRRVEEDHSNTELGIVEYQHAFKTPDADAGEERV

Restriction Sites: SgfI-RsrII

Cloning Scheme:



ACCN: NM_001301046

ORF Size: 1212 bp

OTI Disclaimer: The molecular sequence of this clone aligns with the gene accession number as a point of reference only. However, individual transcript sequences of the same gene can differ through naturally occurring variations (e.g. polymorphisms), each with its own valid existence. This clone is substantially in agreement with the reference, but a complete review of all prevailing variants is recommended prior to use. [More info](#)

OTI Annotation: This clone was engineered to express the complete ORF with an expression tag. Expression varies depending on the nature of the gene.

Components: The ORF clone is ion-exchange column purified and shipped in a 2D barcoded Matrix tube containing 10ug of transfection-ready, dried plasmid DNA (reconstitute with 100 ul of water).

RefSeq: [NM_001301046.2](#)

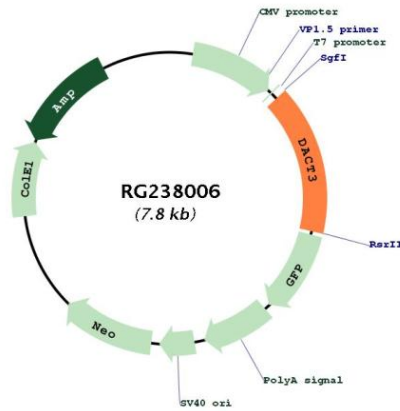
RefSeq Size: 2581 bp

RefSeq ORF: 1215 bp
 Locus ID: 147906
 UniProt ID: Q96B18

Cytogenetics: 19q13.32
 MW: 41.9 kDa

Gene Summary: May be involved in regulation of intracellular signaling pathways during development. Specifically thought to play a role in canonical and/or non-canonical Wnt signaling pathways through interaction with DSH (Dishevelled) family proteins.[UniProtKB/Swiss-Prot Function]

Product images:



Circular map for RG238006