

Product datasheet for **RG237997**

PI 3 Kinase p55 gamma (PIK3R3) (NM_001303429) Human Tagged ORF Clone

Product data:

Product Type:	Expression Plasmids
Product Name:	PI 3 Kinase p55 gamma (PIK3R3) (NM_001303429) Human Tagged ORF Clone
Tag:	TurboGFP
Symbol:	PIK3R3
Synonyms:	p55; p55-GAMMA; p55PIK
Mammalian Cell Selection:	Neomycin
Vector:	pCMV6-AC-GFP (PS100010)
E. coli Selection:	Ampicillin (100 ug/mL)
ORF Nucleotide Sequence:	>RG237997 representing NM_001303429. Blue=ORF Red=Cloning site Green=Tag(s)

```
GCTCGTTTGTAGTGAACCGTCAGAATTTTGTAAACGACTCACTATAGGGCGCCGGGAATTCGTGACTG
GATCCGGTACCGAGGAGATCTGCCGCCGCGATCGCC
ATGTACAATACGGTGTGGAGTATGGACCGCATGACGCAGACTGGAGGGAGGTGATGATGCCCTATTTCG
ACAGAAGTATATTTTATATTGAAATGGATCCTCCAGCTCTTCCACCAAAGCCACCTAAGCCAATGACT
TCAGCAGTTCCAATGGAATGAAGGACAGTTCTGTTTCTTTCAGGATGCAGAATGGTACTGGGGGGAT
ATTTCAAGGGAGGAGTAAATGACAAATGCGGGATATGCCAGATGGGACCTTCTGGTCCGAGATGCC
TCAACAAAAATGCAGGGAGATTACTTTGACTTTGCGGAAGGGAGGCAATAATAAGTTAATAAAGATC
TATCACCGGGATGGTAAATATGGCTTTTCTGATCCTCTGACATTTAATCCGTGGTGGAGCTCATTAAAC
CACTATACCATGAATCTTTGCTCAGTACAATCCCAAACCTTGATGTGAAGCTGATGTACCCAGTGTCC
AGATACCAACAGGATCAGTTGGTAAAAGAAGATAATATTGATGCAGTAGGTAAAAAACTGCAAGAATAC
CACTCTCAGTATCAGGAGAAGAGTAAAGAGTATGATAGGCTGTATGAAGAATATACTAGAACATCCAG
GAAATACAGATGAAGAGGACTGCAATAGAAGCTTTTAAATGAAACAATAAAAATTTGAAGAGCAGTGT
CACACACAAGAACAACATAGCAAAGAATATATTGAGCGATTTTCGAGAGAGGGGAATGAAAAGGAGATT
GAACGATGGCTCAATCACAAGGAGTGAGACAGAAACGCTGAATGTCTGGCTGGGAATTAAGAATGAG
GATGCTGATGAGAATTTTTATCAATGAGGAAGATGAAAACCTGCCCATATGATGAGAAAACCTGG
TTTGTGAGGATATCAATCGAGTACAAGCAGAGGACTTGCTTTATGGGAAACCTGATGGTGCATTCTTA
ATTCGTGAGAGTAGCAAGAAAGGATGCTATGCTTGCTCTGTGGTGGCCGATGGGGAAGTGAAGCACTGT
GTGATCTACAGCACTGCTCGGGCTATGGCTTTCAGAGCCCTACAACCTGTACAGCTCTCTGAAGGAG
CTAGTGTCCATTACCAGCAGACATCCTTGGTTCAGCACAACGACTCCCTCAACGTGAGGCTTGCCTAC
CCTGTTTCATGCACAGATGCCCTCGCTTTGCAGA
ACGCGTACGCGGCCGCTCGAG - GFP Tag - GTTTAAAC
```



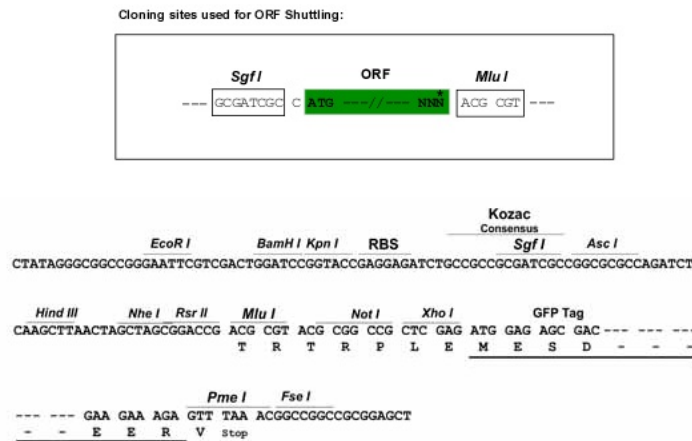
[View online »](#)

Protein Sequence: >Peptide sequence encoded by RG237997
 Blue=ORF Red=Cloning site Green=Tag(s)

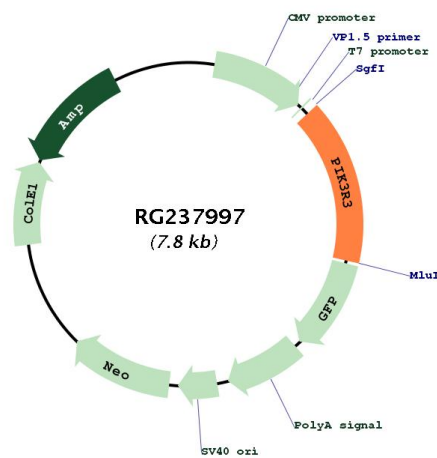
MYNTVWSMDRDDADWREVMMPYSTELIFYIEMDPPALPPKPPKPMTSAPVNGMKDSSVSLQDAEWYWGDI
 ISREEVNDKLRDMPDGTFLVRDASTKMQGDYTLTLRKGGNNKLIKIYHRDGKYGFSDPLTFNSVELIN
 HYHHESLAQYNPKLDVKLMYPVSRVYQQDLVKEDNIDAVGKQLQEYHSQYQEKSKYDRLYEEYTRTSQ
 EI QMKRTAIEAFNETIKIFEEQCHTQE QHSKEYIERFRREGNEKEIERWLNHKGVQRKRLNVWLGKNE
 DADENYFIN EEDENLPHYDEKTFWVEDINRVQAE DLLYGKPDGAFLIRESSKKGCYACSVVADGEVKHC
 VIYSTARGYGF AEPYNLYSSLKELVLHYQQTSLVQHNDSLNVRLAYPVHAQMPSLCR
 TRTRPLEMESDESGLPAMEIECRITGTLNGVEFELVGGEGTPEQGRMTNKMSTKGALTFSPYLLSHV
 MGYGFYHFGTYPSTYENPFLHAINNGGYNTRIEKYEDGGVLHVSFSYRYEAGRVIGDFKVMGTGFPED
 SVIFTDKIIRSNATVEHLHPMGDNDLDGSFTRTFSLRDGGYSSVVD SHMHFKSAIHPSILQNGGPMFA
 FRRVEEDHSNTELGIVEYQHAFKTPDADAGEERV

Restriction Sites: SgfI-MluI

Cloning Scheme:



Plasmid Map:



ACCN:	NM_001303429
ORF Size:	1206 bp
OTI Disclaimer:	The molecular sequence of this clone aligns with the gene accession number as a point of reference only. However, individual transcript sequences of the same gene can differ through naturally occurring variations (e.g. polymorphisms), each with its own valid existence. This clone is substantially in agreement with the reference, but a complete review of all prevailing variants is recommended prior to use. More info
OTI Annotation:	This clone was engineered to express the complete ORF with an expression tag. Expression varies depending on the nature of the gene.
Components:	The ORF clone is ion-exchange column purified and shipped in a 2D barcoded Matrix tube containing 10ug of transfection-ready, dried plasmid DNA (reconstitute with 100 ul of water).
RefSeq:	NM_001303429.2
RefSeq Size:	5515 bp
RefSeq ORF:	1209 bp
Locus ID:	8503
UniProt ID:	Q92569
Cytogenetics:	1p34.1
Protein Families:	Druggable Genome
Protein Pathways:	Acute myeloid leukemia, Apoptosis, B cell receptor signaling pathway, Chemokine signaling pathway, Chronic myeloid leukemia, Colorectal cancer, Endometrial cancer, ErbB signaling pathway, Fc epsilon RI signaling pathway, Fc gamma R-mediated phagocytosis, Focal adhesion, Glioma, Insulin signaling pathway, Jak-STAT signaling pathway, Leukocyte transendothelial migration, Melanoma, mTOR signaling pathway, Natural killer cell mediated cytotoxicity, Neurotrophin signaling pathway, Non-small cell lung cancer, Pancreatic cancer, Pathways in cancer, Phosphatidylinositol signaling system, Progesterone-mediated oocyte maturation, Prostate cancer, Regulation of actin cytoskeleton, Renal cell carcinoma, Small cell lung cancer, T cell receptor signaling pathway, Toll-like receptor signaling pathway, Type II diabetes mellitus, VEGF signaling pathway
MW:	47.8 kDa
Gene Summary:	Phosphatidylinositol 3-kinase (PI3K) phosphorylates phosphatidylinositol and similar compounds, which then serve as second messengers in growth signaling pathways. PI3K is composed of a catalytic and a regulatory subunit. The protein encoded by this gene represents a regulatory subunit of PI3K. The encoded protein contains two SH2 domains through which it binds activated protein tyrosine kinases to regulate their activity. [provided by RefSeq, Jun 2016]